

Prosiect Maen Hir

Statement of Community Consultation

SEPTEMBER 2024

Contents

1. Introduction	4
Explains the purpose of this document.	
2. About Us	5
Introduces us (Lightsource bp), the developer bringing forward Prosiect Maen Hir.	
3. The Project	6
Information about Prosiect Maen Hir	
4. The DCO consenting process	10
Provides an overview of the DCO consenting process.	
5. Our community consultation	12
Explains our commitment to conducting a meaningful pre-application community consultation.	
6. Who we will consult	16
Sets out who we are seeking to encourage to take part in our consultation.	
7. How we will consult	20
Details how we will be conducting our consultation.	
8. Environmental information	28
Explains the process being undertaken to identify, assess and report on the likely significant environmental effects of the Project, and how this aligns with our consultation process.	
9. Indicative Project timeline	30
Sets out the anticipated timescales associated with Prosiect Maen Hir.	
10. Next steps and contact details	31
Summarises what happens to feedback when the consultation closes and details the different ways consultees can get in touch with our team.	
Appendix 1	32
Gateway organisations and bodies	
Appendix 2	35
Information event venues and document inspection locations	

List of tables

Table 1	DCO application process
Table 2	Consultation document availability
Table 3	Consultation information event programme
Table 4	Section 48 Notice schedule
Table 5	Media outlets
Table 6	Document inspection locations

List of figures

Figure 1	Components of a typical solar project
Figure 2	Project location and site boundary
Figure 3	Statutory consultation - key dates
Figure 4	Core consultation zone
Figure 5	Indicative Project timeline
Figure 6	Information event venues and document inspection locations

All graphics and maps in this document are for illustrative purposes only. Lightsource bp's data privacy statements are available on the Project webpage¹.

¹<https://lightsourcebp.com/uk/>

1. Introduction

- 1.1. Lightsource SPV 204 Limited (“we” or “the Applicant”) is publishing this Statement of Community Consultation (“SoCC”) in connection with its proposal for a new solar energy and storage project known as Prosiect Maen Hir.
- 1.2. Prosiect Maen Hir (the ‘Project’) is a solar and energy storage project we are proposing on land in the north of Anglesey, Wales. It has the potential to generate 360 megawatts (MW) of electricity to supply to the transmission network.
- 1.3. The purpose of the SoCC (this document) is to set out how we intend to consult people living in the vicinity of the land that is needed for the Project; including an explanation of the consultation we will carry out before submission of our application for development consent. It includes:
 - 1.3.1. A description of the consenting process we must follow
 - 1.3.2. What we will be consulting on
 - 1.3.3. Who we will consult
 - 1.3.4. How we will consult
 - 1.3.5. How people can respond to the consultation
 - 1.3.6. How we will use the consultation feedback responses
- 1.4. The SoCC will be published in Welsh and English on Tuesday 17 September 2024 in advance of statutory consultation launching.
- 1.5. As required by Section 47 (6) of the Planning Act 2008, we will publish a Section 47 Notice in Welsh and English in local newspapers for one week to advertise that the SoCC has been published as follows:
 - 1.5.1. Holyhead and Anglesey Mail - 18 September 2024
 - 1.5.2. North Wales Daily Post – 19 September 2024
 - 1.5.3. Western Mail – 20 September 2024
- 1.6. The SoCC will be available to view and download from the Project webpage, and copies will be made available at document inspection locations (see Table 6) and in-person consultation events (see Table 3).

2. About us

- 2.1. Lightsource bp is a global leader in the development, financing, management, and operation of utility-scale solar and energy storage projects. For over a decade we have been harnessing sunlight to help power the world in a clean, sustainable, and responsible way.
- 2.2. Lightsource was established in 2010 and has provided sustainable and affordable energy to businesses and communities throughout the UK².
- 2.3. Lightsource and bp partnered in 2017, and currently operates as a joint venture. Recently, bp has announced the intention to fully acquire Lightsource bp, as part of its scaling-up to help meet the rising demand for reliable electricity, while supporting the global energy transition to net zero. Lightsource bp has developed 9.5GW of solar capacity globally to date.
- 2.4. Lightsource bp considers community engagement and consultation as intrinsic to the development of proposals it brings forward.
- 2.5. Respecting that each community is unique, we are committed to working with and listening to the views of those communities with interests in the Project. This will allow us to develop the Project responsibly and in a manner that recognises and positively responds to the unique character and interests of local communities.

²Information on UK projects can be found at: <https://lightsourcebp.com/uk/projects/>

3. The Project

- 3.1. The Project comprises the construction, operation, and maintenance, and decommissioning of a solar photovoltaic (PV) electricity generating station with a capacity of 360 MW (megawatts), and associated development including a Battery Energy Storage System (BESS) and a 5MWp community solar project.
- 3.2. The Project will be connecting to a new National Grid 400kV Substation (the National Grid Substation), which will be consented separately by National Grid Electricity Transmission (NGET).
- 3.3. It will comprise the following principal components as the NSIP and associated development:
 - 3.3.1. Solar PV Site (Gogledd Maen Hir, Canol Maen Hir, and De Maen Hir 'A' and 'B')
 - PV Modules
 - Mounting Structures
 - Low Voltage Distribution Cabling
 - 33kV / 132 kV Substations, to include but not limited to:
 - Transformers
 - Switchgear
 - Inverters - String Inverters (under or next to PV Tables) or Central Inverters (which would be located throughout the Solar PV Site)
 - Transformers – required to step up voltages of the electricity generated by PV Arrays before it is routed to the Project Substation

- Project Substation which would consist of electrical infrastructure such as Transformers, Switchgear and metering equipment with a ring main unit (RMU unit) at 33kV
 - Battery Energy Storage System (BESS) typically comprising containers which include the rack, modules, and cells;
 - Power Conversion Systems (inverters and transformers) and ancillary infrastructure
 - Fencing, security elements and Ancillary Infrastructure
 - Access Tracks
 - Highway Works
 - Drainage and services
 - Public rights of way improvements and permissive paths
 - Green infrastructure
 - 5MWp Community Solar Project
 - Construction Compounds
- 3.3.2. Cable Route Corridor – the route for the proposed 132kV and /or 33kV underground cables connecting the 33kV and 132kV Substations to the BESS and the Project Substation.
 - 3.3.3. Grid Connection Corridor –the proposed corridor for the Grid Connection Cables between the Project Substation and the NGET Substation. This corridor is still to be defined as it is dependent on the siting of the NGET Substation.
 - 3.3.4. Mitigation and Enhancement Areas.

3.4. The Project is located on Anglesey, to the north of the island, and comprises approximately 1,284 hectares (ha) of land (Site) with potential to accommodate Solar PV development and associated infrastructure including the Project Substation and BESS.

- 3.5. The Site comprises three parcels, which is shown in **Figure 2:**
 - 3.5.1. Gogledd Maen Hir (Maen Hir North) – comprises land near Roshgoch and Bodewryd.
 - 3.5.2. Canol Maen Hir (Maen Hir Central) – comprises land around the northern and eastern periphery of Llyn Alaw.
 - 3.5.3. De Maen Hir (Maen Hir South A and B) – comprises land to the north-east and south-east of Llannerch-y-medd.
- 3.6. The Site predominantly comprises agricultural fields, with an area of brownfield land close to Roshgoch, which was formerly an oil depot.

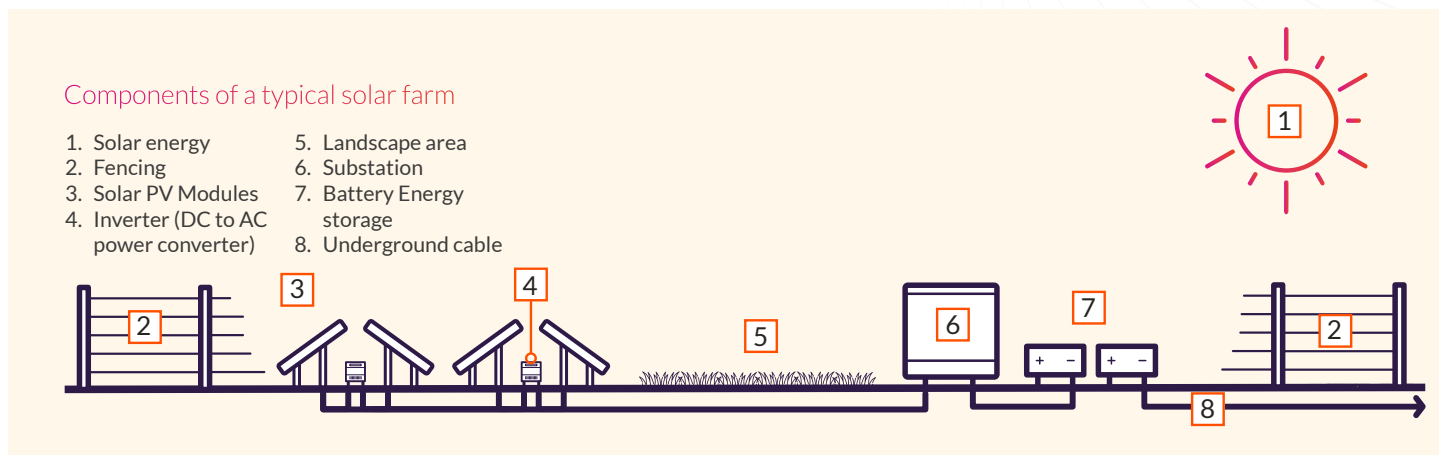


Figure 1: Components of a typical solar project

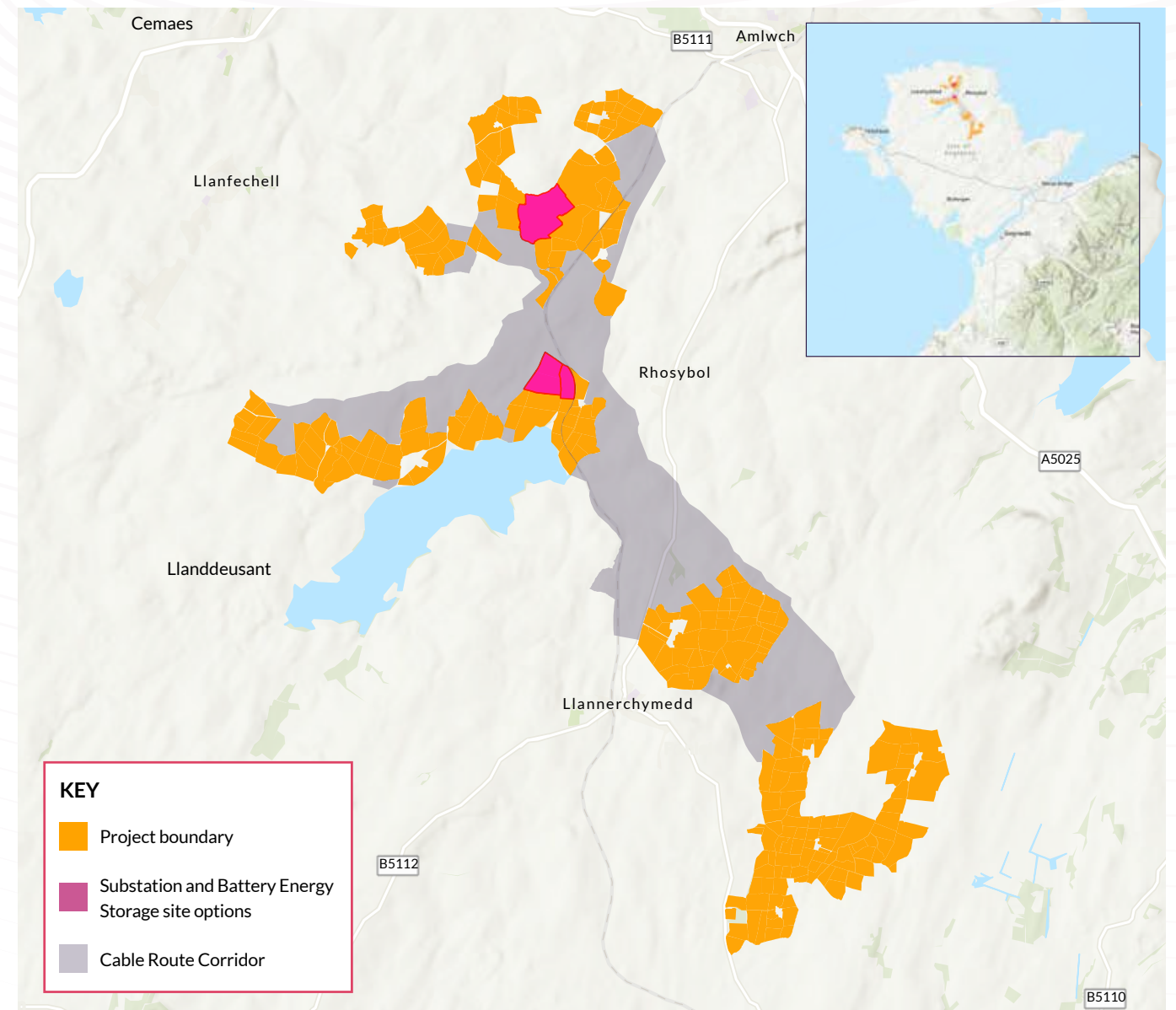


Figure 2: Project location and site boundary

- 3.7. Our vision for the Project is that it will play a key role in delivering the transition to de-carbonised and low-cost renewable energy generation, leaving a positive legacy of net-benefits for Ynys Môn and its future generations.
- 3.8. To achieve this vision our objectives are to develop the Project in a manner that fully acknowledges and is respectful to the Island and its sense of place by recognising opportunities to:
- 3.8.1. Strengthen the resilience of local Welsh language communities by addressing the socio-economic risks to those communities.
 - 3.8.2. Respect and enhance existing landscape features, recognising and responding to local variations in character which give areas their distinct sense of place.
 - 3.8.3. Reinstate missing/lost field boundaries to restore landscape character and enhance biodiversity.
 - 3.8.4. Develop a stronger understanding of local cultural heritage through surveying of buried archaeological remains and improve access to prehistoric and historic remains.
 - 3.8.5. Create and enhance habitats to increase biodiversity and improve connectivity including woodland, scrub, hedgerow, grasslands, and wetland habitats.
 - 3.8.6. Create a positive environmental, cultural and economic legacy for Anglesey by supporting projects and initiatives that directly benefit communities closest to the Project.
- 3.9. The Project has the potential to:
- 3.9.1. Support Anglesey's Energy Island Programme, which seeks to position the Island at the forefront of low carbon energy research and development, production, and servicing, with the intention of bringing local economic, community, and environmental benefits through adoption of the proximity principle.
 - 3.9.2. Make a vital contribution to meet Welsh and UK Government targets to achieve Net Zero by 2050.
 - 3.9.3. Provide long-term energy affordability as solar is one of the cheapest ways to generate electricity and help secure UK energy independence by improving reliability of our national power supply.
 - 3.9.4. Enhance local biodiversity through the creation of new wildlife habitats and for continued agricultural use (e.g. livestock grazing, wildflower plantings).
 - 3.9.5. Improve recreational and amenity resources for the local community and visitors (e.g. new permissive paths, cycle routes).
 - 3.9.6. Work with local partners such as Grŵp Llandrillo Menai and Bangor University to support STEM skills, education and training for students, and to enhance local employment opportunities.
 - 3.9.7. Maximise opportunities and benefits for the local supply chain.
 - 3.9.8. Benefit those communities closest to the project by using the funds made available through the community solar element of the project to deliver and support local projects and initiatives that align with the needs of those communities.



4. The DCO Consenting Process

- 4.1. The Project is classified as a Nationally Significant Infrastructure Project (NSIP) because it comprises the construction of a generating station in Wales with a capacity over 350MW³. This means that it requires development consent under the Planning Act 2008 ('the Act') in the form of a Development Consent Order ('DCO').
- 4.5. Isle of Anglesey County Council (IoACC) as the local authority has been consulted on the contents of this document, as required by Section 47(2) of the Act. IoACC has also had the opportunity to, and provided comments on, early drafts of this SoCC. The feedback it provided has been considered by Lightsource bp in the production of the SoCC (this document).
- 4.2. Lightsource bp will submit an application for development consent for the construction, operation and maintenance and decommissioning of the Project to the Planning Inspectorate ('PINS'), the body responsible for managing the examination process for NSIPs.
- 4.6. For more information on this process, or for advice on how to respond to our pre-application consultation, please see the PINS Advice Note 8 on the Gov.uk website⁵.
- 4.3. If PINS accepts the application, the public will be able to register as an interested party and an Examining Authority will be appointed. The Examining Authority will then conduct an examination of the application and make a recommendation to the Secretary of State for Energy Security and Net Zero. The Secretary of State will then review the recommendation and decide whether to grant development consent for the Project. **Table 1** provides an overview of the five key stages in the DCO application process.
- 4.7. Information about Prosiect Maen Hir can also be found on PINS' website⁶.
- 4.4. Before submitting the application for development consent, Lightsource bp must carry out statutory consultation in accordance with the Act. This document, known as a Statement of Community Consultation ('SoCC'), has been prepared in accordance with Section 47(1) of the Act and associated guidance⁴. It explains how Lightsource bp intends on carrying out statutory consultation with the local community during the pre-application stage, sharing information about the Project and inviting comment back on the Project.

DCO Application Process

1. Pre-application	We, the Applicant, must consult with the community and statutory consultees in compliance with the Planning Act 2008. To demonstrate this to the Planning Inspectorate, the DCO application we submit will include a Consultation Report setting out our method for consulting, the feedback received in response to the consultation, and how this has influenced our proposals.
2. Acceptance	The Planning Inspectorate, on behalf of the Secretary of State, has 28 days to decide whether the application meets the required standards to proceed to examination, including whether our consultation has been adequate.
3. Pre-examination	You can register as an interested party to be kept informed of progress and opportunities to put your case forward. The Examining Authority will hold a preliminary meeting and set the timetable for examination.
4. Examination	You can submit your comments in writing, and request to speak at an open floor hearing. The Examining Authority has six months to conduct the examination.
5. Decision	A recommendation to the Secretary of State will be issued by the Examining Authority within three months. The Secretary of State then has a further three months to issue a decision on the proposal.

Table 1: DCO application process

³Planning applications for energy generating projects on land which have an installed capacity of between 10MW and 350MW are made directly by Welsh Ministers under the DNS regime.

⁴[https://www.legislation.gov.uk/ukpga/2008/29/section/47#:~:text=47Duty%20to%20consult%20local%20community&text=\(1\)The%20applicant%20must%20prepare.the%20vicinity%20of%20the%20land](https://www.legislation.gov.uk/ukpga/2008/29/section/47#:~:text=47Duty%20to%20consult%20local%20community&text=(1)The%20applicant%20must%20prepare.the%20vicinity%20of%20the%20land)

⁵<https://www.gov.uk/government/publications/nationally-significant-infrastructure-projects-advice-note-eight-overview-of-the-nationally-significant-infrastructure-planning-process-for-members>

⁶<https://infrastructure.planninginspectorate.gov.uk/projects/wales/maen-hir-solar-and-energy-storage-project/>

5. Our Community Consultation

- 5.1. The objectives of this Statement of Community Consultation are to:
- 5.1.1. Raise awareness about the Prosiect Maen Hir and the consultation so local communities have the opportunity to:
 - i. Understand the Project, its potential impacts and the measures proposed to reduce those impacts.
 - ii. Engage in discussion relating to ways of maximising local benefits to meet their long-term needs so they can provide their views and feedback.
 - 5.1.2. Provide clear, accessible, and appropriately detailed information on the Project written in clear, easy to read language.
 - 5.1.3. Ensure that consultation is accessible to all by providing a range of different opportunities for people to engage with and comment on the Project at a time that is convenient to them. For example, online (website, webinars), in person (events, briefings), in writing (feedback form, letters).
 - 5.1.4. Clearly signpost the different ways in which people can comment on the Project.
 - 5.1.5. Ensure that everyone who has an interest in the Project is made aware of the examination process and is provided with information explaining how they can participate in that process including the option to participate.
 - 5.1.6. Offer the opportunity to engage and provide comments in Welsh.

Previous engagement - Môn Solar Farm

- 5.2. We are mindful that the community may be aware of an earlier iteration of the Project through previous engagement we carried out in 2021 relating to a solar development on a similar site known as 'Mon Solar'. Pre-application engagement was carried out with IoACC, and an initial (non-statutory) community consultation undertaken during the COVID-19 pandemic.
- 5.3. Consultation activity specific to Mon Solar was delivered in line with prevailing COVID-19 pandemic restrictions over the course of March 2021. This included holding online community information events, with video presentations and live question and answer sessions in Welsh and English.
- 5.4. The Project was reintroduced as Prosiect Maen Hir in Autumn / Winter 2023. A revised and larger project than Mon Solar, Lightsource bp restarted consultation with the submission of the Scoping Report to the Planning Inspectorate, writing to near neighbours of the Site and updating our Project webpage.

Statutory consultation – 02 October to 15 November 2024

- 5.5. Statutory consultation on the Project will take place between Wednesday 02 October and Friday 15 November 2024. This phase of consultation will allow us to share more detailed information about the Project and for anyone interested to submit their views for consideration.
- 5.6. At the same time as carrying out the community consultation, we are proposing to carry out statutory consultation in accordance with Sections 42 and 48 of the Act which includes local authorities, community councils, statutory stakeholders and owners, tenants, and occupiers of the land who may be potentially affected by the Project.
- 5.7. The statutory consultation will be publicised to local communities within a defined core consultation zone (see Section 6 and Figure 4) as well as other stakeholders including community councils using a variety of communication methods (see Section 7).
- 5.8. Consultation documents and materials will be made available to view at in-person public consultation events and at document inspection locations. They will also be available to view and download from the Project webpage lightsourcebp.com/maenhir-english and lightsourcebp.com/maenhir-cymraeg. Welsh and English speaking members of our Project team will attend consultation information events and be available to answer questions about the Project and provide information about the consultation.
- 5.9. Statutory Consultation is proposed as taking place over a period of six weeks and two days (44 days); the intention being for it to open on 02 October 2024 and run until 15 November 2024. This would see the consultation period exceed the minimum period of 28 days as required by the Act 2008.
- 5.10. Consultation responses should be submitted by 23:59 on Friday 15 November 2024, unless agreed otherwise with us directly.

Statutory consultation – key dates

17 Sept 2024	SoCC available to view at document inspection locations (see Table 6) and on the project webpage (see 7.4)
From 17 Sept 2024	Section 48 Notices published in regional papers, national paper, and the London Gazette (see Table 4) and Section 42 consultation information sent to statutory and prescribed persons
From 30 Sept 2024	Consultation information leaflet confirming details of consultation distributed to addresses within the consultation zone (see Figure 4)
02 Oct 2024	Statutory consultation launches Consultation materials available at document inspection locations Consultation webpages go live Information events held at local venues and online (see Table 3)
15 Nov 2024	Statutory consultation period closes at 23:59 Deadline for submission of all feedback to the consultation

Figure 3: Statutory consultation - key dates

What will we consult on?

- 5.11. The aim of our statutory consultation is to give local communities, community councils, landowners, occupiers, statutory consultees and interested parties the opportunity to understand and influence the Project. We will seek feedback to help refine the Project prior to preparing our DCO application documents.
- 5.12. During the statutory consultation, we will welcome and consider feedback on all aspects of the Project, and will invite comments on the following:
- 5.12.1. The Preliminary Environmental Information Report (PEIR), which details the results and presentation of our preliminary environmental assessments and associated mitigation
 - 5.12.2. Proposed longer term operational features, such as how the Project might look to, and be experienced by, near neighbours
 - 5.12.3. Proposed shorter term temporary features, such as plans for construction
 - 5.12.4. Potential benefits associated with the Project, such as the opportunity for a 5MW community solar scheme which may include opportunities to improve green infrastructure or recreational opportunities within the Project site
- 5.13. The draft description and indicative layout for the Project will be set out in the consultation materials.

Ongoing engagement and potential further consultation

- 5.14. After the close of the statutory consultation, our free-to-use, bilingual communication lines (**see 10.5**) will remain open throughout the pre-application period. This is to allow for engagement between consultees, communities, and the Project team to continue beyond the defined consultation period. The Project webpage may also be updated with relevant Project information and materials.
- 5.15. If, as a result of feedback or ongoing design work, the Project changes to the extent that it is necessary to carry out further targeted consultation, this will be conducted in accordance with the principles set out in this SoCC; albeit there may be variations to ensure any targeted consultation remains proportionate.

Consultation reporting

- 5.16. When statutory consultation has closed, we will review and finalise the proposed application having regard to the feedback received during the statutory consultation period. We will then produce a Consultation Report. This will be included with our DCO application.
- 5.17. The Consultation Report will:
- 5.17.1. Describe our consultation process.
 - 5.17.2. Evidence how we have complied with legal requirements
 - 5.17.3. Detail how we have worked with IoACC so that our consultation is suitable for the area through the proposals set out in this SoCC
 - 5.17.4. Set out the feedback and consultation responses we receive
 - 5.17.5. Respond to the feedback we have received, setting out how we have had regard to feedback relevant to the Project and how it has influenced the Project

Examination process and interested parties

- 5.18. Interested parties will have further opportunity to formally comment on the proposals for Prosiect Maen Hir following the submission of a DCO application to the Planning Inspectorate.
- 5.19. After submission, the Planning Inspectorate, on behalf of the Secretary of State, will decide whether the application meets the standards required to be accepted for examination.
- 5.20. Subject to the application being accepted, members of the public will be able to register with the Planning Inspectorate to become an Interested Party by making a Relevant Representation.
- 5.21. The Planning Inspectorate then has up to six months to carry out an examination. During this stage, Interested Parties who have registered by making a Relevant Representation are able to participate in the process by attending hearings and making further written submissions.
- 5.22. **Section 4** of this document provides an overview of the five key stages in the DCO application process.
- 5.23. More detail about the application process can also be found on the Planning Inspectorate's website.

General Data Protection Regulation (GDPR)

- 5.24. Any comments received to the statutory consultation could be made public. Any personal data received as part of the consultation will be stored and protected in accordance with the requirements of the General Data Protection Regulation.
- 5.25. The privacy notice is available on Lightsource bp's website⁷ and a hard copy can be made available on request.

⁷<https://lightsourcebp.com/uk/>

6. Who we will consult

- 6.1. Our consultation process is open to anyone who is affected by or has an interest in the Project.
- 6.2. We are seeking to actively engage with a wide range of individuals and groups. We want our consultation to be accessible for everyone to be able to take part.
- 6.3. In accordance with Section 47 of the Planning Act 2008 the SoCC must outline how we propose to consult people living ‘in the vicinity of the land’ about the Project. There is no definitive list that identifies those people, groups or organisations falling into this category. Therefore, we have used professional judgement and taken advice from the local authority on what is appropriate for the Project.
- 6.4. To help determine the core consultation zone, we have considered where the Project may have a direct or indirect impact, either permanently or temporarily, as a result of construction, operation and maintenance, or decommissioning of the Project.

Core consultation zone

- 6.5. Having considered these impacts, we have determined an appropriate core consultation zone by initially extending a minimum distance of two kilometres from the boundary of the Site in which the solar panels, energy storage system, on-site substation, and supporting infrastructure will be located, as well as the cable route corridor for the grid connection.
- 6.6. The zone has then been extended further to avoid splitting communities where proportionate and reasonable subject to consideration of:
 - 6.6.1. Zone of theoretical visibility to assess the areas in vicinity of the Project boundary which could experience a degree of visual impact.
 - 6.6.2. Existing natural and human geographical boundaries, for example, the A55 and the coastline.
 - 6.6.3. Coverage of the host community councils as follows:
 - Amlwch Town Council
 - Mechell Community Council
 - Rhosybol Community Council
 - Tref Alaw Community Council
 - Llannerch-y-medd Community Council
 - Llanddyfnan Community Council
- 6.7. We will seek to engage directly with the people who live and work, or have an interest, in land within our core consultation zone including residents, local businesses, and community organisations (including those community councils listed above), to raise awareness and encourage participation in the consultation through a selection of communication channels (see Section 7).
- 6.8. The core consultation zone we have determined is shown in Figure 4.

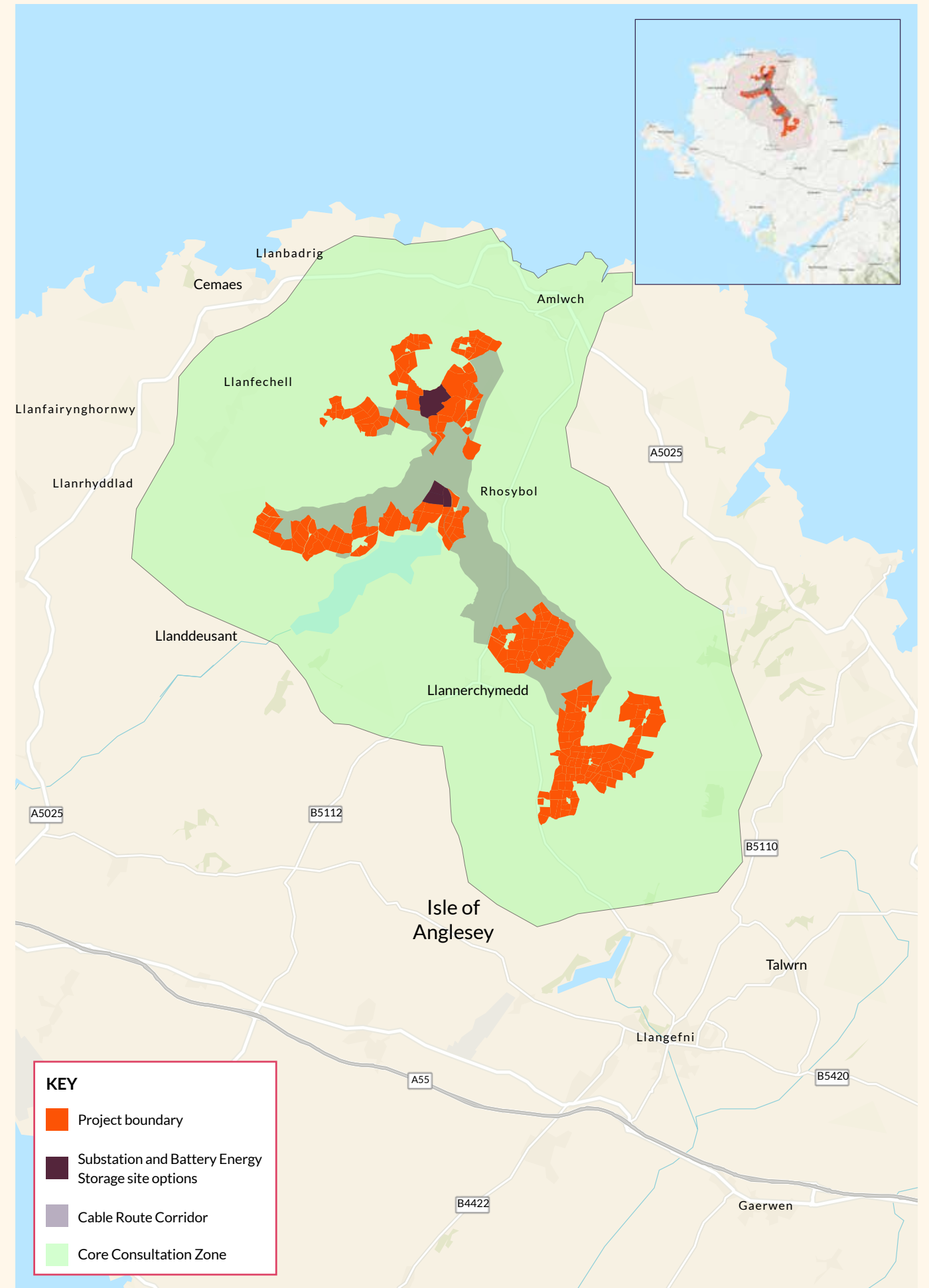


Figure 4: Core consultation zone

Consulting people living beyond the core consultation zone

- 6.9. We recognise that there may be individuals, groups and organisations who live and work beyond the core consultation zone we have identified who may also have an interest in the Project. We are committed to giving these individuals and groups the opportunity to participate in the consultation and provide their views.
- 6.10. To give these individuals and organisations the opportunity to participate we will raise awareness of the consultation in the following way:
- 6.10.1. Directly notify all those individuals who have registered their interest in the Project⁸ about consultation, including those who have expressed concern or opposition to the Project
- 6.10.2. Publish a Section 48 notice in the local and national press and London Gazette
- 6.10.3. Publicise the consultation by advertising in local media with a circulation to audiences that lie beyond the core consultation zone **(see sections 7.36-7.39)**
- 6.10.4. Publish consultation materials so they are available to view online or collect from document inspection locations **(see Table 6)**
- 6.10.5. Fulfil requests for copies of the consultation materials received through the Project contact details **(see 10.5)**

Consulting with under-represented or seldom heard groups

- 6.11. We are committed to ensuring the consultation process and associated communications reach as many parts of the community as possible.
- 6.12. We have identified a range of 'under-represented' or 'seldom heard' groups and individuals within the consultation zone who may be less likely to participate in or respond to traditional consultation techniques. These key groups are:
- 6.12.1. Young people
- 6.12.2. Older people
- 6.12.3. Economically inactive people
- 6.12.4. Socially deprived communities
- 6.12.5. People with disabilities
- 6.12.6. People with learning difficulties
- 6.12.7. Minority ethnic groups
- 6.12.8. Gypsy and traveller communities / groups
- 6.12.9. People who are time poor i.e. working full time and/or shift workers
- 6.12.10. Groups representing religions and other beliefs
- 6.12.11. Lesbian, gay, bisexual, and transgender community
- 6.12.12. Tourists and visitors to Anglesey.
- 6.12.13. Second homeowners
- 6.13. We have developed our consultation methodology **(see Section 7)** to accommodate communicating as effectively as possible with these groups, so they have the opportunity to access information and respond to the consultation.
- 6.14. We have identified 'gateway organisations' representing the interests of seldom heard groups in the consultation zone, who we will write to ahead of statutory consultation taking place to set out how we intend to deliver the consultation. **See Appendix 1** for a list of the gateway organisations and bodies we have identified and will contact.
- 6.15. A Project freephone information line with Welsh and English language options **(see 10.5)** staffed by our community relations team is available to assist people who may find it difficult to submit written comments to the consultation.
- 6.16. Requests for community consultation literature **(see 7.7-7.16)** to meet specific requirements (such as large print or audio for those with visual impairments, or an alternative language for those who do not speak Welsh or English as their first language, to enable them to take part in the consultation) will be considered on a case-by-case basis so we can establish how to provide the information required.

⁸Individuals and interested parties wanting to stay informed about the Project are invited to 'Register for updates' via the Project webpage so updates about the Project and associated engagement and consultation activity can be sent to them direct.



7. How we will consult

7.1. We aim to carry out our community consultation in a way that gives as many people as possible the opportunity to access information about the Project and provide their views.

7.2. Our objective for how we deliver consultation is to ensure that we utilise a wide range of engagement methods to make it easy for people to:

- 7.2.1. Access clear and concise information about the Project and the potential effects (this will include making all relevant technical documents relating to the Project available);
- 7.2.2. Review and comment on consultation documents at a time which is convenient to them; and,
- 7.2.3. Express their views regarding the Project by submitting feedback to the statutory consultation via easy to use and accessible methods.

7.3. The consultation activities described in this section of the SoCC aim to deliver inclusive, meaningful, and open consultation. The activities include a range of methods to ensure that the consultation can be accessed by all members of the local community (including those 'under-represented' or 'seldom heard' groups **set out in 6.12**).

Project webpage

7.4. The Project webpage is available in Welsh lightsourcebp.com/maenhir-cymraeg and English lightsourcebp.com/maenhir-english. All the consultation materials will be available to view and download from the website.

7.5. It will be possible to submit a response to the consultation via the Project webpage using a dedicated online feedback form which will be live throughout the consultation period.

7.6. The Project webpage will allow people to register their contact details so updates about the Project can be sent to them directly.

Community consultation literature

7.7. A **Consultation Leaflet** will be directly mailed to approximately 4,061 addresses which lie within the consultation zone (**see Figure 4**) from 30 September 2024. These leaflets will also be made available online, to collect from document inspection locations (**see Table 6**), and to take away from our information events (**see Table 3**). Leaflets can also be posted to addresses beyond the core consultation zone on request.

7.8. These leaflets will be our main form of direct communication about the consultation with the local community. They will publicise the community consultation and where information can be found. They will also confirm details of the consultation period and the activities being undertaken, such as dates, times and locations for in-person and online information events. Leaflets will also include details of how to access the Project webpage and communications channels.

7.9. A **Project Information Booklet** will be published on the Project webpage at the start of statutory consultation. This will provide a summary of the Project, details of how people can take part in the consultation, how feedback will be considered and used to influence the Project going forward and how we will provide information on the outcome of the consultation.

7.10. Printed copies of this document will be available at all in-person information events and document inspection locations, as well as being made available on request.

7.11. A **Consultation Feedback Form** will be made available for community members to respond to the consultation in writing. These will be available online and in printed format at document inspection locations, in-person information events, and by request. Feedback forms can be returned free of charge using the Project freepost address **FREEPOST MAEN HIR PROJECT**.

7.12. Throughout the consultation period, people will also be welcome to submit written feedback by post to **FREEPOST MAEN HIR PROJECT** or by email to the Project email address: maenhir@lightsourcebp.com. Feedback submitted to the consultation by email must be received **by 23:59 on Friday 15 November 2024**. Written feedback sent by post received after this deadline will be accepted subject to the postmark date being no later than the prescribed deadline of 15 November 2024.

7.13. By appointment with the Project team it will be possible to make a verbal representation over the Project freephone information line (Welsh – 0808 175 6663; English – 0808 175 6375). Feedback provided will be transcribed and agreed verbally prior to submission. Appointments to provide verbal feedback should be made by contacting the Project team via Project freepost, email addresses or telephone number described above.

7.14. We will develop a **Frequently Asked Question (FAQ)** document detailing the most frequently asked questions about the Project and their corresponding answers. This will be available on the Project webpages and in hard copy at in-person information events.

7.15. The Consultation Leaflet, Project Information Booklet, Consultation Feedback Form and FAQ document will be published in Welsh and English in printed format and made available to take away from in-person information events and document inspection locations. They will also be available to view and download from the Project webpage from the launch of consultation. Copies will also be made available on request in digital or hard copy format.

7.16. Requests for community consultation literature set out above to meet specific requirements (such as large print or audio for those with visual impairments, or in an alternative language for those who do not speak Welsh or English as their first language) will be considered on a case-by-case basis.

Technical documents

- 7.17. We will publish all those technical documents we have produced which describe and evaluate our proposals for the Project under consultation on the Project webpage. These comprise:
 - 7.17.1. The **Preliminary Environmental Information Report (PEIR)** provides preliminary information on the likely significant environmental effects of the Project and how we propose to manage and mitigate them.
 - 7.17.2. A **Non-Technical Summary (NTS)** of the PEIR, which will be published in Welsh and English.
 - 7.17.3. **Maps and plans** at appropriate scales.
- 7.18. Printed reference copies of the PEIR, NTS, maps and plans will be available to view at in-person consultation information events and document inspection locations (see **Table 6**).
- 7.19. The NTS can be provided in hard copy, including in alternative formats, by request. However, requests for hard copies of the PEIR will be reviewed on a case-by-case basis. To cover printing and postage costs a reasonable charge may apply.

Additional information

- 7.20. While the community consultation literature and technical documents setting out details of our proposals for the Project are intended as the subject of the consultation, draft versions of the **Collaborative Benefits Report** and **Outline Construction Traffic Management Plan** will also be made available to view in English.
- 7.21. These are live working documents that will be updated during the pre-application stage of the Project and be submitted as part of the Application for development consent. The latest drafts of these documents will be made available to view during the consultation at in-person consultation events in printed format, and in digital format on the Project website.
- 7.22. The draft Collaborative Benefits Report will also be available in Welsh in printed format at in-person events and to view and download from the Project website.
- 7.23. A **Document Navigation Booklet** will be developed to assist with the review of technical documents. Printed copies of this document will be made available in Welsh and English at in-person consultation information events and document inspection locations, and available in digital format to view and download from the Project webpage.
- 7.24. Details of where documents will be available by consultation activity or location type, and their availability in Welsh and English, are set out in **Table 2** below.

Document	Document inspection locations	In-person information events	Project webpage*	Language
SoCC (this document)	Y	Y	Y	Welsh & English
Consultation Leaflet	Y	Y	Y	Welsh & English
Project Information Booklet	Y	Y	Y	Welsh & English
Consultation Feedback Form	Y	Y	Y	Welsh & English
FAQ document	Y	Y	Y	Welsh & English
Preliminary Environmental Information Report (PEIR)	Y	Y	Y	English only
PEIR Non-technical Summary	Y	Y	Y	Welsh & English
Maps and plans	Y	Y	Y	English only
Collaborative Benefits Report - (draft)	N	Y	Y	Welsh & English
Outline Construction Traffic Management Plan (draft)	N	Y	Y	English only
Document Navigation Booklet	Y	Y	Y	Welsh & English
Event Display Panels	N	Y	Y	Welsh & English
Posters	Y	Y	Y	Welsh & English

*Documents and materials will be available as PDFs to view and download free of charge from the 'Documents' section of the Project webpage

Table 2: Consultation document availability

Meetings and information events

- 7.25. In-person information events will be held at venues across a range of locations, days, and times to support accessibility. The dates, times, and locations of the consultation information events we anticipate holding are set out in **Table 3**. They will be published in the statutory notices (see **7.35** and **Table 4**). In addition, they will be advertised in bilingual newspaper advertisements placed across regional media (see **Table 5**), the consultation leaflet (see **7.7**) and posters (see **7.39**).
- 7.26. Welsh and English speaking members of the Project team will be at events to answer questions and discuss the Project in more detail. **Table 2** outlines the project materials that will be available to view at the events. Copies of the printed Consultation Leaflet, Project Information Booklet and Feedback form will also be available for people to take away.
- 7.27. Online information events will take the form of a webinar, the date and time for which will be promoted along with details of in-person events.
- 7.28. Webinars will be held for any member of the public to join via telephone or the internet if accessibility is an issue. This will involve the presentation of information consistent with that made available at in-person events (i.e. display panels by the Project team), followed by a moderated question and answer session. Participants will be invited to submit questions during the webinar. Webinars will be delivered in Welsh and English.
- 7.29. The dates, times, and locations of the consultation events we anticipate holding are set out in **Table 3**.
- 7.30. The location venues where in-person consultation events will take place shown in **Figure 6** (see **Appendix 2**).

Date	Opening Time	Location	Venue
Weds 09 October 2024	13.30-19.30	Llangefni	Llangefni Town Hall, Bulkeley Square, Llangefni, LL77 7LR
Fri 11 October 2024	13.30-19.30	Llanddyfnan	Talwrn Village Hall, Talwrn, LL77 7SU
Thurs 17 October 2024	13.30-19.30	Tref Alaw	Llanddeusant Village Hall, Llanddeusant, Holyhead, LL65 4AA
Fri 18 October 2024	13.30-19.30	Amlwch	Amlwch War Memorial Hall, 18 Market Street, Amlwch, LL68 9ET
Sat 19 October 2024	10.00-14.00	Llanbadrig	David Hughes Village Hall, High Street, Cemaes, LL67 0HL
Tues 22 October 2024	18.00-19.00	Online (Welsh)	Zoom - register to attend via project webpage lightsourcebp.com/maenhir-cymraeg
Sat 26 October 2024	10.00-14.00	Llannerchymedd	The Centre, Llannerchymedd Community School, Llannerchymedd, LL71 8DP
Mon 28 October 2024	13.30-19.30	Mechell	Llanfechell School Community Centre, Mountain Road, Llanfechell, LL68 0SA
Tues 29 October 2024	13.30-19.30	Rhosybol	Rhosybol School Community Centre, Rhosybol, Amlwch, LL68 9PP
Weds 30 October 2024	18.00-19.00	Online (English)	Zoom - register to attend via project webpage: lightsourcebp.com/maenhir-english

Table 3: Consultation information event programme

Open communication

- 7.31. Our bilingual Project communications channels are open throughout the pre-application stage. Outside of consultation period people will still be able to speak to a member of our team to ask questions through these channels.
- 7.32. During the consultation period, consultees can provide written feedback, in Welsh and/or English, by:
 - 7.32.1. Submitting an online feedback form through the Project webpage.
 - 7.32.2. Completing a paper copy feedback form, which can be submitted at an in-person information event or returned via the Project freepost address.
 - 7.32.3. Sending an email to: maenhir@lightsourcebp.com.
 - 7.32.4. Providing comments in writing and posting them free of charge to FREEPOST MAEN HIR PROJECT.
- 7.33. By appointment with the Project team, it will be possible to make a verbal representation over the Project freephone information line (Welsh – 0808 175 6663; English – 0808 175 6375). Feedback provided will be transcribed and agreed verbally prior to submission. Appointments to provide verbal feedback should be made by contacting the Project team via Project freepost, email addresses or telephone number described above.
- 7.34. Questions and requests for information can be made using the communication channels above, as well as through calling the Project freephone information line which has Welsh language and English language options (Welsh - 08081 756663; English - 08081 756375) and is available Monday – Friday, 09.00-17.00, with voicemail outside these hours.

Section 48 Notice

7.35. We will satisfy the requirements under Section 48 of the Act to place notices advertising our intention to submit a DCO application in local newspapers in the vicinity of the Site for two consecutive weeks, and once in a national newspaper and the London Gazette as follows:

Newspaper	1st publication date	2nd publication date
Holyhead and Anglesey Mail	18 September 2024	25 September 2024
North Wales Daily Post	19 September 2024	26 September 2024
Western Mail	20 September 2024	27 September 2024
The Guardian	18 September 2024	n/a
The London Gazette	27 September 2024	n/a

Table 4: Section 48 Notice schedule

Media and advertising

- 7.36. To raise awareness about the Project and the consultation both within and beyond the consultation zone we will issue media releases at the start of the consultation period to provide an overview of the Project, why we are consulting, details of how people can access information about the Project dates and locations of public consultation events being held as well as the deadline by which feedback needs to be submitted.
- 7.37. In addition to publishing a formal Section 48 Notice in local and national newspapers, we will place bilingual advertisements in regional media outlets to promote the consultation. Advertisements will include contact information and consultation information event dates, times, and locations.
- 7.38. A list of the regional media outlets to whom media release will be issued and advertisements placed is provided in **Table 5**.
- 7.39. Posters publicising information about consultation dates, will be issued to those venues where in-person information events are planned to take place, as well as document inspection locations where consultation documents will be lodged (**see Table 6**). Community councils will be provided with access to digital versions of advertisements and posters to enable them to advertise and promote the consultation via their own websites, social media, and online community forums if they wish to do so.

Media releases will be issued to:

- BBC News - Wales
- BBC News – North West Wales
- Business News Wales
- Golwg
- Herald Wales
- ITV Wales
- Môn FM
- News from Wales
- North Wales Live Mail Series (Holyhead & Anglesey Mail)
- North Wales Live Mail Series (Bangor Mail)
- North Wales Chronicle
- North Wales Daily Post
- Papur Menai
- Walesonline – Anglesey
- Western Mail
- Yr Arwydd
- Y Glorian
- Y Rhwyd

Advertisements will be placed with:

- Holyhead & Anglesey Mail
- Golwg
- North Wales Chronicle
- North Wales Daily Post
- Western Mail
- Yr Arwydd
- Y Glorian
- Y Rhwyd

Table 5: Media outlets

Welsh language

- 7.40. The Project team includes Welsh speakers, who have informed the approach to consultation and will be present at in-person and online information events.
- 7.41. Community consultation literature (see 7.7-7.16), the Non-Technical Summary of the PEIR (see 7.17.2), document navigation booklet (see 7.23) and the Project webpage (see 7.4) will be provided in Welsh and English, and written in clear, easy to read language.
- 7.42. Our freephone information line for community enquiries has Welsh language and English language options (see 10.5).

Document inspection locations

- 7.43. **Table 2** outlines the documents that will be available to view at document inspection locations in printed and electronic format, while community consultation literature (Consultation Leaflet, Project Information Booklet, and Feedback Form) will be made available to view and takeaway.
- 7.44. Document inspection locations have been selected on the criteria of them being in proximity of the Project and publicly accessible. The location, opening times (as currently known) and contact details for the venues where materials will be located are set out in **Table 6**.
- 7.45. A map showing the location of document inspection locations is included in **Appendix 2**.

Stakeholder letters and meetings

- 7.46. We will issue communications to key stakeholders including local political representatives (Councillors, Member of Parliament, and Members of the Senedd) and Community Council clerks representing electoral divisions, constituencies, and communities within the consultation zone to provide information about the proposals we are consulting on and invite them to take part in the consultation.
- 7.47. Communications will direct key stakeholders to digital versions of consultation materials to enable them to advertise and promote the consultation through their own online channels for example, websites, community forums, social media, with requests for hard copies of materials being considered.
- 7.48. In addition to information events to which prescribed consultees and other bodies will be invited to attend at the start of the consultation; we will consider invitations to, or requests for, meetings with local groups or special interest organisations on a case-by-case basis.
- 7.49. We extend the offer to IoACC to brief councillors and provide information how we are consulting and what we are consulting on.

Changes to our consultation activities

- 7.50. Should any changes to our consultation activities be required due to events outside of our control, details will be publicised as soon as practicable.

Venue & address	Opening times	Telephone / Email
Anglesey Business Centre Isle of Anglesey County Council Bryn Cefni Business Park Llangefni Anglesey LL77 7XA	09.30 – 16.30 Monday to Friday	T: (01248) 750 057 E: pmo@ynysmon.llyw.cymru
Amlwch Library Lôn Parys Amlwch Anglesey LL68 9EA	Tues 09.30-12.30 14.00-17.00 Wed 09.30-12.30 Closed Thu Closed 14.00-19.00 Fri 09.30-12.30 Closed Sat 09.30-12.30 Closed	T: (01407) 830145 E: kbxlh@anglesey.gov.wales
Benllech Library Bangor Road Benllech Tyn y Gongl LL74 8TF	Mon Closed 14.00-17.00 Tues Closed 13.00-17.00 Wed 10.00-13.00 14.00-17.00 Fri Closed 14.00-18.00 Sat 10.00-13.00 Closed	T: (01248) 852348 E: dcxlh@anglesey.gov.wales
Holyhead Library Market Hall Stanley Street Holyhead LL65 1HH	Mon 09.30-18.00 Tues 09.30-18.00 Wed 09.30-13.00 Thu 09.30-18.00 Fri 09.30-18.00 Sat 09.30-12.30	T: (01407) 762917 E: kpxlh@ynysmon.llyw.cymru
Llangefni Library Lôn y Felin Llangefni Anglesey LL777RT	Mon 09.00-19.00 Tues 09.00-17.00 Wed 09.00-13.00 Thu 09.00-18.00 Fri 09.00-19.00 Sat 09.30-12.30	T: (01248) 752095

Table 6: Document inspection locations

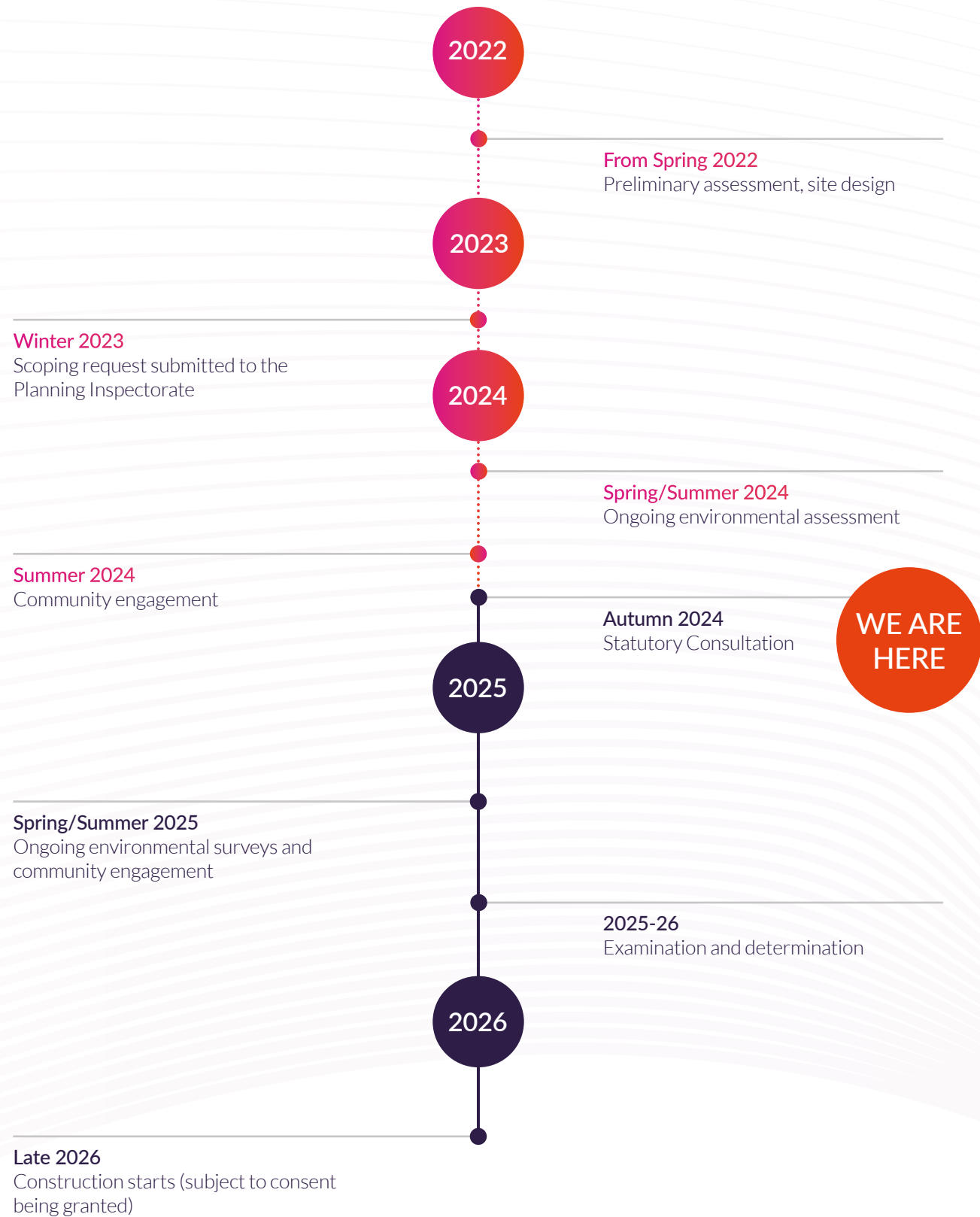
8. Environmental information

- 8.1. Prosiect Maen Hir is classed as a 'EIA development' for the purposes of 'The Infrastructure Planning (Environmental Impact Assessment) Regulations 2017' (EIA Regulations 2017). We will therefore carry out an Environmental Impact Assessment (EIA) and produce an Environmental Statement (ES) in which the final EIA will be set out. The ES will be submitted with our application for development consent.
- 8.2. EIA is the process of identifying, assessing, and mitigating, where relevant, the likely significant environmental effects of a project. The ES is the document that records that process and describes the likely significant effects and proposed mitigation measures. The requirement for EIA for Nationally Significant Infrastructure Projects is transposed into law through the Infrastructure Planning (Environmental Impact Assessment) Regulations 2017 (the EIA Regulations). These regulations specify which developments and schemes are required to undertake an EIA.
- 8.3. Our statutory phase of community consultation will be aligned with the publication of the Preliminary Environmental Information Report (PEIR). This is to allow community members the opportunity to consider and provide feedback to us directly on the PEIR in parallel to statutory consultees. All comments will be considered.
- 8.4. The following reports (listed below) will be prepared as part of the EIA process:
- 8.4.1. **Scoping Report** - our Scoping Report was submitted to the Planning Inspectorate on 9 November 2023 and described the Project and the assessment we will undertake to identify any likely significant effects upon the receiving environment. Feedback on this request from the local authority and other statutory consultees was published in the Scoping Opinion issued by the Planning Inspectorate on 19 December 2023. Both documents are available to view on the Maen Hir Solar and Energy Storage Project section of the Planning Inspectorate's website⁹.
- 8.4.2. **Preliminary Environmental Information Report (PEIR)** - the purpose of the PEIR is to build upon the findings from the scoping documents and the feedback received through early engagement. It will incorporate findings of the surveys and preliminary environmental assessments that have been carried out to date but is not a full and detailed technical assessment of the Project. It is intended to set out a description of the proposals and the likely effects upon the environment, identify possible mitigation measures, and facilitate consultation on the draft Project. This will enable consultees to develop an informed view of the likely effects that the Project may have on the local environment and engage with us to help shape and develop the evolution of the Project. We will seek feedback on the findings of the PEIR through our statutory consultation.
- 8.4.3. **Environmental Statement (ES)** - the ES will further develop the content of the PEIR and incorporate the responses from the statutory consultation, stakeholder engagement and results of any further surveys undertaken. It will also describe any changes to the Project and any mitigation measures that need to be implemented. The ES will form part of the DCO application.



⁹<https://infrastructure.planninginspectorate.gov.uk/projects/wales/maen-hir-solar-and-energy-storage-project/#>

9. Indicative Project timeline



*Please note this timeline is indicative and may be subject to change

Figure 5: Indicative Project timeline

10. Next steps and contact details

Consultation responses

- 10.1. Feedback to the consultation must be submitted in writing or online by **23:59 Friday 15 November 2024**, unless agreed otherwise with us directly.
- 10.2. When a respondent submits feedback to the consultation online an automated acknowledgement to confirm receipt will be issued.
- 10.3. Any person who has submitted feedback and is concerned that they have not received an acknowledgement of receipt should contact the Project community relations team using the community helpline or Project email (**see 10.5**).

Contact details

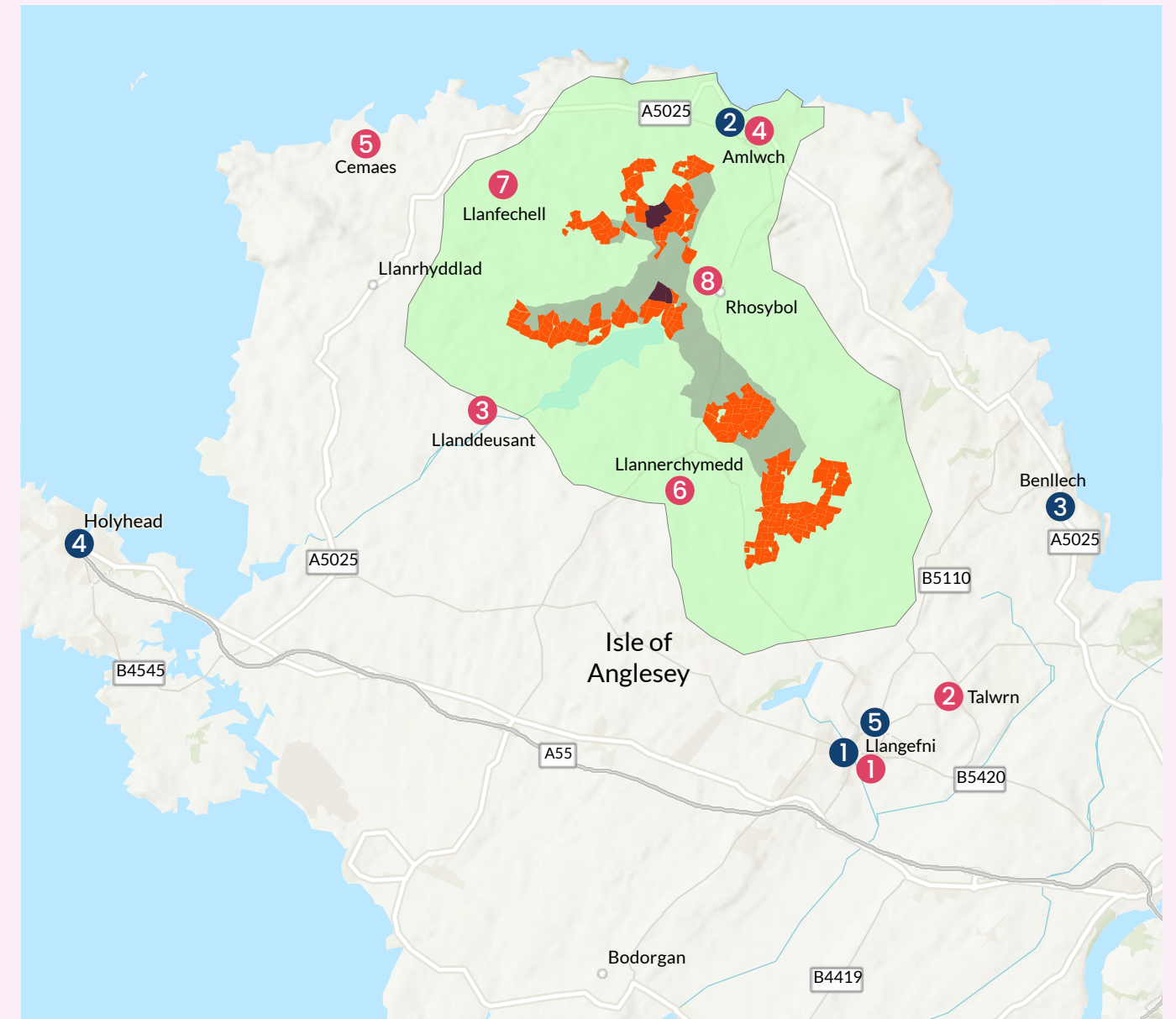
- 10.4. Our Project community relations team is available to provide members of the community and other stakeholders with assistance in finding out more about the Project and the consultation.
- 10.5. The team can be contacted using any of the methods listed below:
 - 10.5.1. **Email:** maenhir@lightsourcebp.com.
 - 10.5.2. **Freephone (Welsh):** 0808 175 6663 (available Monday – Friday, 09.00-17.00, with voicemail outside these hours).
 - 10.5.3. **Freephone (English):** 0808 175 6375 (available Monday – Friday, 09.00-17.00, with voicemail outside these hours).
 - 10.5.4. **Freepost:** FREEPOST MAEN HIR PROJECT (no stamp required).
 - 10.5.5. **Web:** lightsourcebp.com/maenhir-english or lightsourcebp.com/maenhir-cymraeg

Appendix 1: Gateway organistations and bodies

Category	Gateway organisation/body
Young people	<p>Scouts Môn Anglesey Federation of Young Farmers Girlguiding Ynys Môn Cyfarfodydd Wythnosol Urdd Gobaith Cymru Snap Cymru Action for Children - Ynys Môn Young Carers North Wales Wildlife Trust - Môn Gwrdd youth forum Isle of Anglesey Council - Anglesey Youth Service</p> <p>Secondary schools Ysgol Syr Thomas Jones Ysgol Gyfun Llangefni Ysgol Uwchradd Bodedern Ysgol Uwchradd Caergybi</p> <p>Primary schools Ysgol Rhosybol Ysgol Bodffordd Ysgol Cemaes Ysgol Llanfechell Ysgol Llannerch-y-Medd Ysgol Gynradd Amlwch</p>
Older people	<p>Adult Social Services Age Cymru Gwynedd a Môn Age Well Hwyllog Môn Carers Trust North Wales Carers Wales North Wales Dementia Centre Carers Outreach Service</p>
Economically inactive / socially deprived	<p>Isle of Anglesey County Council Housing Services Anglesey Food Bank Digartref Ynys Môn North Wales Housing / Tai Gogledd Cymru Bwyd Da Môn community hub</p>
People with disabilities / learning disabilities	<p>Ynys Môn Riding for the Disabled Betsi Cadwaladr University Health Board; Intervention and prevention services for Children (LD & CCN) Anglesey Tyddyn Môn Ability Net Gig Buddies Cymru Gwynedd and Anglesey Asperger/Autism Support Group Ynys Môn & Gwynedd Mind Parabl</p>
Minority ethnic groups	<p>Medrwn Môn (Môn Community Link) Diverse Cymru BAWSO, Wrexham CLPW (Portuguese in Wales Community Group) EYST Wales North Wales Africa Society North Wales Filipino Association North Wales Regional Equality Network Welsh Refugee Council</p>
Gypsy and traveller communities	<p>Gypsies and Travellers Wales</p>
Lesbian, gay, bisexual, transgender, queer+ community (LGBTQ+)	<p>The Gay Outdoor Club - North Wales Rustic Rainbow North Wales Pride North Wales LGBTQ+ Social Group</p>
Tourists and visitors to Anglesey	<p>Anglesey Tourism Association North Wales Tourist Board Go North Wales North Wales Tourism Visit Wales PIWS</p>
Community interest - Welsh language	<p>Llwyddo'n Lleol 2050 Menter Iaith Môn Fforwm Iaith Ynys Môn</p>
Community interest - women's group	<p>Anglesey Women's Institute Merched Y Wawr</p>
Community interest - recreational	<p>Actif Woods Anglesey Anglesey Cycling Group Anglesey Pony Club Bull Bay Golf Club Cybi Striders Môn Milers Social Running Group Ramblers Cymru Friends of Lôn Las Môn Lein Amlwch Anglesey Agricultural Show</p>
Community interest - campaign group	<p>Wylfa Ni Objecting to Maen Hir Solar Project Anglesey</p>

Category	Gateway organisation/body
Community interest – environmental	North Wales Outdoor Partnership Small Woods – Coed Lleol Cymdeithas Gwenynwyr Môn (Anglesey Beekeepers Association)
Community interest – local heritage	Cwmni Cemaes Cyf
Community organisation - socio economic	Morlais- Anglesey Marine Energy Medrwn Môn NFU Cymru Farmers' Union of Wales Ambition North Wales Menter Môn Môn CF Ambition North Wales- The North Wales Economic Ambition Board Anglesey Enterprise Zone The Enterprise Hub - M-Sparc
Community organisation – other	Love Amlwch Community Group Citizens Advice Ynys Môn Citizens advice Ynys Môn / Cyngor ar bopeth Ynys Mon RAF Valley Hub Anglesey Library Service

Appendix 2: Information event venues and document inspection locations



KEY	In-person consultation event locations:	Document inspection location addresses:
 Project boundary	1 Llangefni Town Hall	1 Anglesey Business Centre
 Substation and Battery Energy Storage site options	2 Talwrn Village Hall	2 Amlwch Library
 Cable Route Corridor	3 Llanddeusant Village Hall	3 Benllech Library
 Core Consultation Zone	4 Amlwch War Memorial Hall	4 Holyhead Library
	5 David Hughes Village Hall	5 Llangefni Library
	6 The Centre, Llannerchymedd Community School	
	7 Llanfechell School Community Centre	
	8 Rhosybol School Community Centre	

Figure 6: Information event venues and document inspection locations

Contact us



Email: maenhir@lightsourcebp.com



Freephone (Welsh): 0808 175 6663
(available Monday – Friday, 09.00 – 17.00, with voicemail outside these hours)



Freephone (English): 0808 175 6375
(available Monday – Friday, 09.00 – 17.00, with voicemail outside these hours)



Freepost: FREEPOST MAEN HIR PROJECT (no stamp required)



Web (Welsh): lightsourcebp.com/maenhir-cymraeg



Web (English): lightsourcebp.com/maenhir-english

If you would like this document in large text or an alternative format, please contact us on 0808 175 6375 or send an email to maenhir@lightsourcebp.com