

Community Information Pack

Proposed solar & energy storage project at Knockanure, Co. Kerry



Lightsource bp is working on a proposal for a solar and energy storage project in Knockanure, Country Kerry. We will develop a solar and energy storage project connected into the local electricity network, with an output power capacity of 193MWac (megawatts ac) and a storage capacity of 149MWac.

We've chosen this site after careful consideration, and we're now undertaking a wide range of environmental assessments to help shape our plans. These assessments aim to understand any impacts on the landscape and visual amenity, heritage and archaeology, ecology and ornithology, flooding and more.

An important part of developing plans for the solar and energy storage project is engaging with local communities, so we're holding an information event to display our plans and gather feedback. Members of the Lightsource bp team will be on hand to answer any questions about the proposal from our neighbours and any other interested parties.

Statistics



193MWac installed solar capacity.
204,700MWh (megawatt hours) supplied per year.



Equivalent to the energy needs of **45,500** households.



599 acres of land



77,800 tonnes of carbon emissions saved



Equivalent to taking over **39,700** combustion cars off the road every year.



149MWac energy storage capacity

Get involved!

Community Information Event

Thursday 17th October 2024 at:

Knockanure Community Centre
Kealid, Knockanure,
Co. Kerry, V31 K778

Drop in any time between 2pm and 7pm

Find out more at our project website -

www.lightsourcebp.com/ie/project/knockanure

Our initial thoughts

Proposed solar & energy storage project at Knockanure

We're still in the early stages, and our plans will evolve based on local input and the results of our ecological, landscape and heritage assessments. These are our current thoughts.



Native Species
We have undertaken an Extended Phase 1 Habitat Survey to inform the layout design and construction mitigation measures.

Existing Vegetation
While developing the layout we have sought to maintain most of the existing vegetation onsite.

New Vegetation Planting
We will submit a detailed planting plan as part of the planning application, which will focus on screening potential views of the installation using vegetation and increasing biodiversity.

Green Open Spaces
The project has been designed to leave wide spaces around the site boundaries and between the row of panels to avoid shading the panels. This will leave most of the fenced solar array area as uncovered grassland.

Continued Agricultural Use
These fields are currently used for pasture. Our proposal includes plans to create a meadow grassland which can be lightly grazed by sheep, so the land under the solar installation will maintain an agricultural purpose.

Views & Screening
The site is well screened by existing trees and hedgerows. There are some impacts on views from nearby properties which will be appropriately mitigated by additional planting and setbacks.

Boosting Biodiversity
A bespoke Biodiversity Management Plan will ensure that the existing and new habitats are enhanced or created to benefit local wildlife. As part of this initiative, our landscape planting, seeding and habitat creation plans will focus on native species. We are keen to hear from and work with any local beekeepers and land management organisations to support wildlife and boost the local habitats.

FAQs

Why is this project important?
Solar energy is a passive electricity generation which doesn't create any waste products or pollutants. This makes it an ideal energy source for Ireland. Energy storage is an important part of the plan to transition to a low-carbon electricity network. It enables better balancing of the grid and can increase the amount of renewables-generated electricity used across Ireland.

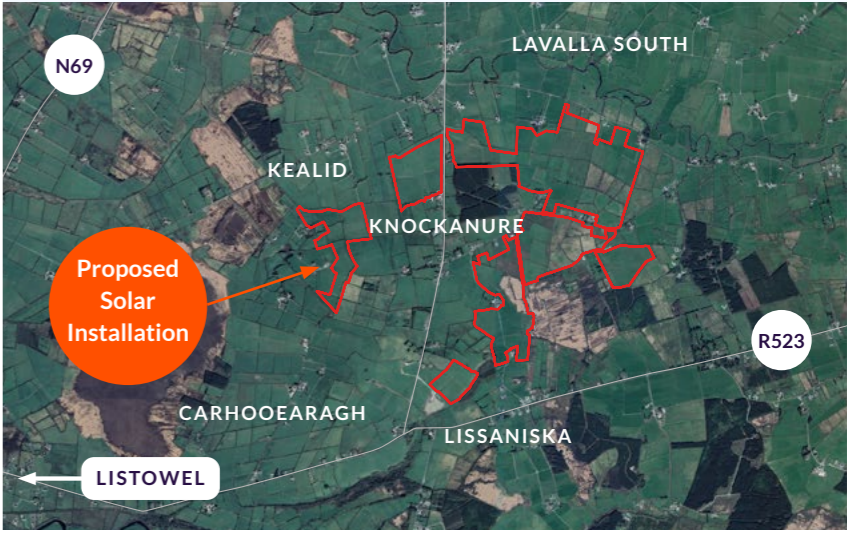
What is an energy storage facility and how does it work?
An energy storage facility can store and release electricity generated by any power source. Working in a similar way to standard household batteries, it consists of several components including battery units, inverters, and a substation to connect into the electricity transmission network. It is possible to reduce energy costs for consumers by storing the low-cost energy generated by renewable sources during sunny or windy periods or when demand is low, and then to release it during peak demand periods, or when renewables aren't generating.

How will the equipment be protected?
The project will be enclosed by a timber and wire agricultural fence about 2 metres in height, and CCTV cameras will monitor the boundary fence and area within the solar and energy storage project. These will be specifically positioned to make sure they do not impinge on the privacy of residents.

Does the project pose a health and safety risk?
Safety is a core value at Lightsource bp and all our projects are developed to the highest standards of safety. Solar is a passive technology which doesn't produce any harmful by-products. All electrical equipment we use meets the Electromagnetic Compatibility (EMC) Directive and are CE marked.

The energy storage project will come equipped with the latest, advanced safety features, including fire suppression systems, and the site is designed specifically to add further defence-in-depth in the in case of a failure of one of the battery units. The risk of fire is extremely low, and incidents are extremely rare. Because we're never complacent about safety, we will engage with the local fire service to develop a bespoke fire management plan so that they are prepared in the unlikely event of an emergency.

Will the project cause traffic disruption?
Once the solar and energy storage project is in place it requires very little maintenance and approximately monthly visits in regular cars or 4x4s would cause no traffic disruption. Whilst the project is being constructed, a traffic management plan will be put in place.



Who are we?



Lightsource bp is a global leader in the funding, development and long-term management of large-scale solar energy projects. We work closely with local businesses and communities to supply clean, dependable and competitively priced energy. We're dedicated to securing a low-carbon future, and to meeting the dual challenge of an increased demand for energy alongside a need to reduce emissions, in Ireland and worldwide.

Community engagement

It's important to us that the local community are fully informed of the plans for the site, and have the opportunity to comment and learn about the proposal. We will be holding an information event to provide details about our project ideas at this stage, and we welcome your feedback.

The information event will be held on:

Thursday 17th October 2024 at:

Knockanure Community Centre
Kealid, Knockanure,
Co. Kerry, V31 K778

Drop in any time between 2pm and 7pm.



Find out more

Find out more at our project website - www.lightsourcebp.com/ie/project/knockanure.

If you have queries in relation to this project, please contact the project team by calling (0)1 685 6263, or emailing ireland@lightsourcebp.com, quoting "Knockanure". You can also message us on Facebook or write to us at Lightsource bp, Trinity House, Charleston Road, Ranelagh, D06 C8X4.