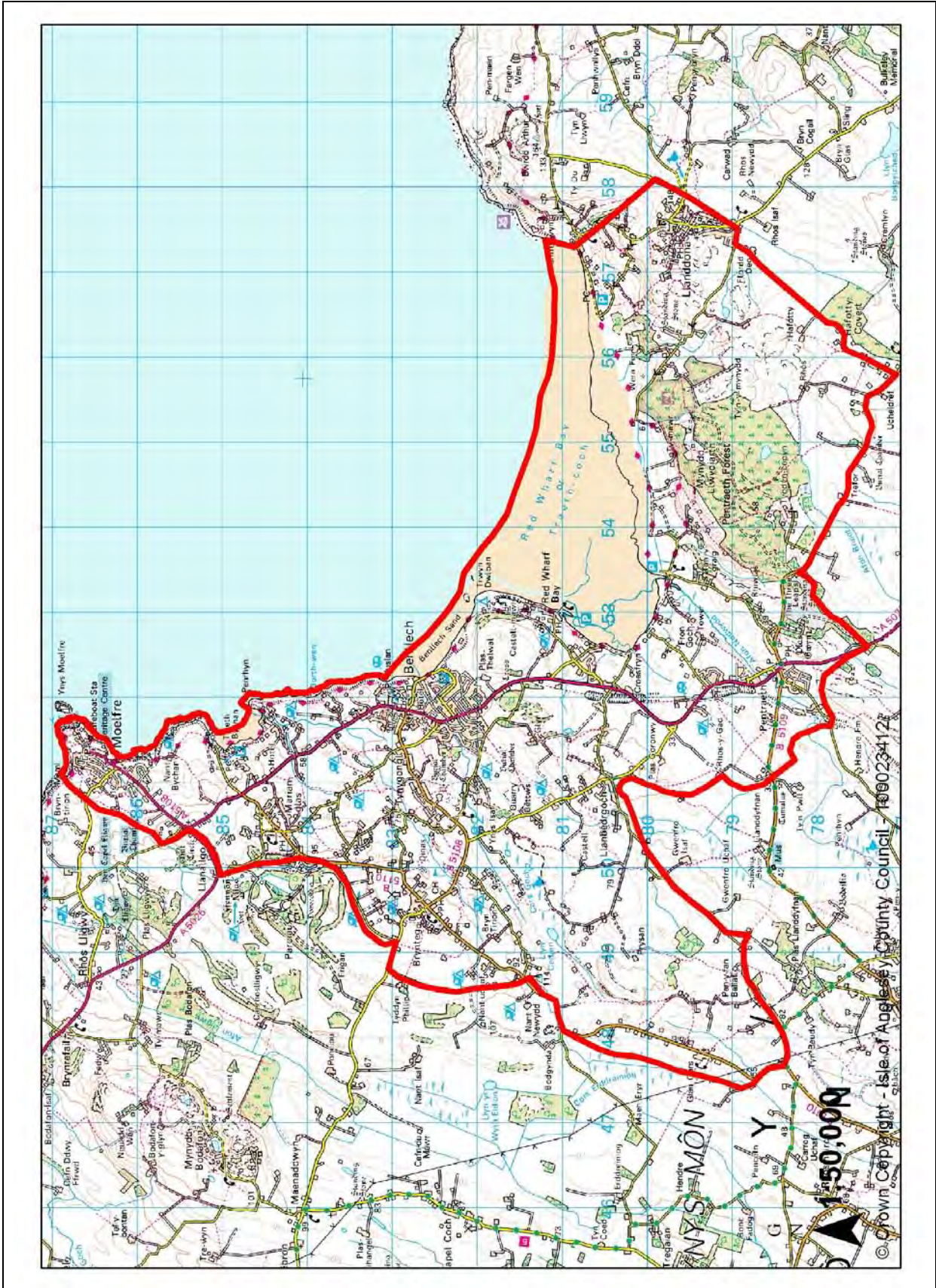


LANDSCAPE CHARACTER AREA 9: RED WHARF BAY





Red Wharf Bay and Llanddona



Moelfre



Red Wharf Bay

Description

The LCA has been established around the broad, open sweeping Red Wharf Bay, with the inland boundaries based upon breaks of slope and edge of vista. It includes the historic settlement of Moelfre and the more modern, tourist based settlement at Benllech. In addition there are a number of caravan and camping sites which contribute to the areas character but are also visual detractors. The latter has a visual impact upon the character and quality of the area. The southern edge of the LCA is demarcated by Mynydd Llwydiarth. Formerly an unenclosed rocky outcrop, it has been subject to extensive conifer planting in the 20th Century and forms an important woodland block on the island. Other woodlands, primarily broadleaved, exist inland from Benllech and Pentraeth which both form distinctive landscape elements. Elsewhere areas of limestone pavement and associated habitats are found, as are areas of quarrying.

Further inland the LCA abuts the rural, agricultural heartland of Anglesey, which is typified by mixed patterns of field sizes and settlement, and has a gently rolling land form. Within this, areas of wetland and mire exist.

Although Benllech forms a substantial settlement in its own right, it is felt that the LCA reflects the influence of the coastline and sea upon the area, whereby landscape character is influenced by the consciousness of the sea and open sweeping vistas that subsume the development pattern. Cross reference to Seascapes Regional Unit 6.

Key Issues

Coastal Landscapes

Ensure development and management proposals take into account:-

- Any direct or indirect impacts upon the range of coastal habitats.
- Visual, direct and cumulative impacts upon essential characteristics of the LCA. In this instance the vast exposure of sand at low tide establishes the essential quality of the landscape. This will be especially important given the influence of Benllech and Moelfre upon the LCA.
- Have regard to the AONB Management Plan.

Habitat Management

New development and management proposals should seek to:-

- Ensure key habitats – broadleaved woodland, coastal features, limestone pavement are properly managed.
- Develop and enhance existing habitats such as conifer plantations and link to Local Biodiversity Action Plan.

Settlement Edge

Given the scale of Benllech and Moelfre any proposals for development or landscape management should:-

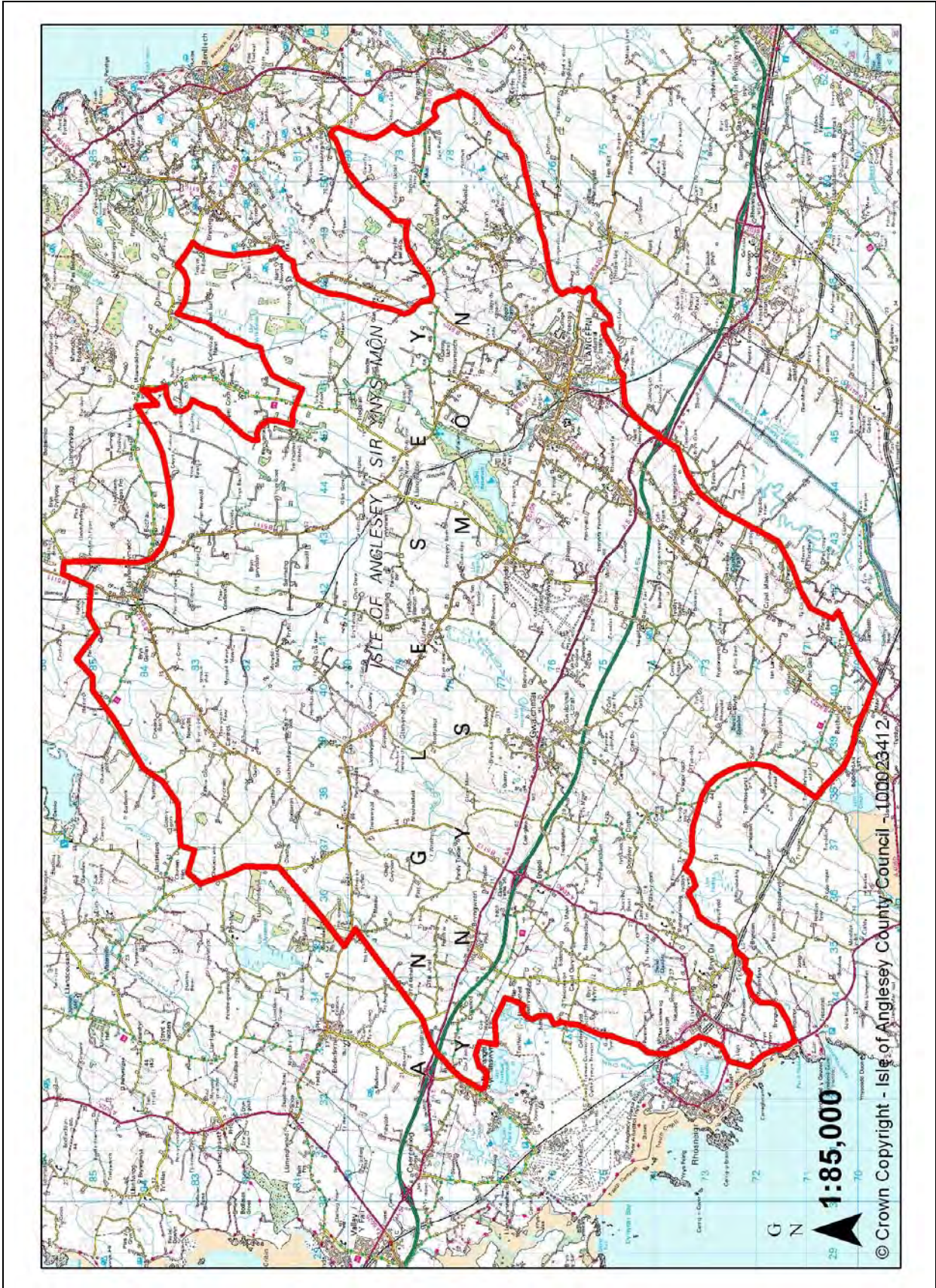
- Reflect the development pattern of the LCA.
- Seek to use landform and vegetation patterns to mitigate impacts.
- Ensure scale, form and materials respect the local vernacular.
- Utilise and retain local boundary patterns.

Tourism Development

The area has a number of caravan and camping sites. Consideration should be given to addressing their visual impact through sensitive boundary treatments and enhanced landscaping. Any new developments should also take into account the cumulative impact of such developments as identified in the coastal landscapes issue above.

Landmap Aspect Area Matrix - LCA 9 Red Wharf Bay												
Aspect Area	UID	AreaName	1	2	3	4	5	6	7	8	9	Overall Evaluation
Geological Landscapes	YNSMNGLO29	Cors Erddeiniog	L	L	L	L						Moderate
	YNSMNGLO30	Benllech	H	H	H	M						High
	YNSMNGLO31	Cors Goch	M	L	L	L						Moderate
	YNSMNGLO35	Rhos-y-Gad	L	L	L	L						Moderate
	YNSMNGLO36	Llanddyfnam	L	M	M	L						Moderate
	YNSMNGLO37	Llyn Nodwydd	L	L	L	L						Moderate
	YNSMNGLO38	Rhiwlas	H	M	M	M						High
	YNSMNGLO39	Llanddona	L	L	L	L						Moderate
	YNSMNGLO41	Llansadwrn	O	O	O	O						Outstanding
	YNSMNGLO44	Afon Braint	L	L	L	L						Moderate
	YNSMNGLO46	Gaerwen-Newborough	L	L	L	L						Moderate
	YNSMNGLO56	Pentre Berw	L	L	L	L						Moderate
	YNSMNGLO63	Rhosmeirch	L	L	L	L						Moderate
YNSMNGLO101	Benllech Coast	O	H	H	M						Outstanding	
YNSMNGLO102	Red Wharf Bay	O	H	H	M						Outstanding	
YNSMNGLO103	Glan Halen	L	L	L	L						Moderate	
Landscape Habitats	YNSMNLH021	Cors Goch	O	O	L	U	H	M	O	O		Outstanding
	YNSMNLH022	Cors Erddreiniod (south section)	O	H	L	U	H	M	O	U		Unassessed
	YNSMNLH027	Farmland - central Anglesey	L	M	M	U	M	U	L	M		Moderate
	YNSMNLH032	Red Wharf Bay sands	H	H	L	U	H	M	M	U		Moderate
	YNSMNLH034	Coastal strip - Penmon to Red Wharf	H	H	L	U	H	M	H	H		High
	YNSMNLH051	Coast - Penmon Point to Red Wharf Bay	O	H	L	U	H	H	O	M		High
	YNSMNLH071	Pentraeth Forest	L	L	M	U	M	M	M	H		High
	YNSMNLH072	Red Wharf Bay Salt-marsh	M	H	L	U	H	M	M	M		Moderate
	YNSMNLH095	Farmland N.W. of Menai Bridge	L	L	M	U	M	U	M	M		Moderate
	YNSMNLH100	Farmland N. of Beaumaris	L	L	M	U	M	U	L	M		Moderate
	YNSMNLH101	Farmland W. of Moelfre	L	L	M	U	U	M	L	H		Moderate
	YNSMNLH104	N. of Benllech	M	M	M	U	M	M	M	M		Moderate
	YNSMNLH115	Farmland S.W. of Benllech	M	M	M	U	M	M	M	M		Moderate
	YNSMNLH116	Surrounding Pentraeth Forest	M	M	M	U	M	M	M	H		Moderate
	YNSMNLH120	Traeth Dulas & Lligwy	H	H	L	U	H	M	M	U		Moderate
	YNSMNLH121	Coast - Traeth Benllech to Moelfre	H	H	L	U	H	H	M	M		Moderate
	YNSMNLH127	Benllech	L	L	M	U	U	L	L	L		Low
YNSMNLH139	Gwenfro and Rhos-y-gad	H	H	L	U	H	M	O	H		Outstanding	
YNSMNLH142	Woodland N. of Brynteg	U	M	U	U	M	H	H	H		High	
Visual & Sensory	YNSMNVSO05	Mynydd Llwydiarth	H	H	H	M						High
	YNSMNVSO06	Pentraeth Forest	M	H	H	H						High
	YNSMNVSO12	Central smooth belt	M	H	L	L						Moderate
	YNSMNVSO14	Benllech hinterland	H	M	M	M						Moderate
	YNSMNVSO22	Pentraeth valleys	M	H	M	L						Moderate
	YNSMNVSO37	East coast	H	H	H	M						High
	YNSMNVSO39	Red Wharf Bay	O	M	O	H						Outstanding
	YNSMNVSO73	Moelfre	M	L	M	M						Moderate
	YNSMNVSO74	Benllech	L	L	L	M						Low
YNSMNVSO75	Pentraeth	M	M	L	M						Moderate	
Historic Landscapes	YNSMNLH009	Fieldscape around Glan-yr-afon	O	H	H	U	H					Outstanding
	YNSMNLH011	Llanddona	O	H	H	O	H					Outstanding
	YNSMNLH012	Mynydd Llwydiarth	M	H	M	U	H					High
	YNSMNLH013	Fieldscape, Plas Gwyn	H	H	H	H	U					High
	YNSMNLH016	Fieldscape, central eastern Mon	O	O	M	O	H					Outstanding
	YNSMNLH037	Fieldscape, Tre-Ysgawen	H	H	H	H	M					High
	YNSMNLH041	Cors Erddreiniog	M	L	M	U	H					Moderate
	YNSMNLH042	Parciau/Lligwy	O	O	H	O	H					Outstanding
	YNSMNLH043	Fieldscape, eastern Mon	H	H	M	H	U					High
	YNSMNLH044	Benllech	M	M	M	M	H					Moderate
	YNSMNLH061	Moelfre	H	H	H	H	M					High
YNSMNLH070	Pentraeth	H	H	M	M	U					High	
Cultural Landscapes	YNSMNL017	Benllech	H	M	M	U	H	H	M	M	H	Moderate
	YNSMNL020	Pentraeth, Traeth Coch	H	H	H	U	H	H	U	H	M	Outstanding
	YNSMNL021	Penmon, Llanddona	H	O	O	H	O	O	L	O	M	Outstanding
	YNSMNL026	North east coast	H	H	O	U	O	H	H	H	H	Outstanding
	YNSMNL027	Moelfre	U	M	H	M	U	M	U	M	M	High
	YNSMNL031	Sustrans Cycle Route	O	M	H	L	M	L	L	M	O	High
	YNSMNL033	Central Anglesey	U	H	H	U	H	H	H	H	H	High

LANDSCAPE CHARACTER AREA 17: WEST CENTRAL ANGLESEY



Description

An expansive LCA which includes a large area of the rural heartland of Anglesey, and including the settlements of Gwalchmai and Llangefni. The LCA also includes a small section of coastal landscape at Rhosneigr including Traeth Llydan, with its associated dune system and impounded water body (Llyn Maelog).

The topography is generally undulating which reflects its underlying geology, particularly the Coedana Granites. This results in a number of rocky outcrops that typify the landscape of this part of the island. These, together with small areas of semi-natural habitats – hedges, trees, mires – are scattered throughout the area within a matrix of improved agricultural grassland.

The topography of the LCA forms a gently undulating pattern which largely reflects the influences of the underlying geology, especially the Coedana granite. This results in the very typical small rocky outcrops that are scattered around this part of the island. These are mirrored by the complex of small areas of semi-natural habitat – mires, trees, hedgerows and hedgebanks which are found throughout the area within a larger matrix of improved agricultural grassland. These form an important landscape resource and contribute markedly to the character of the area, breaking up areas of uniformity within the wider landscape.

The A5 and A55 roads pass through the area, whilst the main railway passes along its southern edge. The main settlements within the LCA are Llangefni and Gwalchmai and nearby adjacent to the A5 are the Anglesey Showground and Mona Airfield.

Key Issues

Habitat Management

An extensive LCA, covering the rural heartland of Anglesey. Any proposals should take into account:-

- The management of the range of semi-natural habitats - mires, trees and hedgerows - found scattered throughout the area.
- The management of wider habitats to increase their value and reflect Local Biodiversity Action Plan objectives.
- That direct and indirect effect upon habitats is properly addressed.

Transportation Corridors

The main railway line and A5/A55 corridors pass through the LCA. It is important any new development or management proposals ensure that:-

- Visual impacts from and to these principal transport corridors are properly considered.
- Mitigation measures reflect the wider landscape structure and sites are not considered in isolation.

Settlement Edge

Development around settlement edges should:-

- Be of a form and character appropriate to each settlement.
- Be considered in terms of impacts upon the wider landscape, rather than the site above.
- Seek to integrate using landform, vegetation etc to minimise impacts.
- Ensure that standard solutions are not used in order that the inherent characteristics of the area are contained within the design.
- Have regard to Llangefni Conservation Area SPG.

Landmap Aspect Area Matrix - LCA 17 West Central Anglesey												
Aspect Area	UID	AreaName	1	2	3	4	5	6	7	8	9	Overall Evaluation
Geological Landscapes	YNSMNGLO18	Afon Alaw	L	L	L	L						Moderate
	YNSMNGLO19	Bodedern	M	M	M	M						Moderate
	YNSMNGLO20	Llanerchymedd	H	H	H	H						High
	YNSMNGLO21	Gwndy	L	L	L	L						Moderate
	YNSMNGLO22	Eirianallt	L	L	L	L						Moderate
	YNSMNGLO23	Caer Glaw	O	H	H	M						Outstanding
	YNSMNGLO24	Cerrig y Cathod	L	L	L	L						Moderate
	YNSMNGLO26	Cae"r-mynydd	L	L	M	L						Moderate
	YNSMNGLO29	Cors Erddeiniog	L	L	L	L						Moderate
	YNSMNGLO30	Benllech	H	H	H	M						High
	YNSMNGLO32	Cors Bodeilto	L	L	L	L						Moderate
	YNSMNGLO33	Afon Ceint	L	L	L	L						Moderate
	YNSMNGLO34	Maltraeth Marsh	M	H	H	M						High
	YNSMNGLO35	Rhos-y-Gad	L	L	L	L						Moderate
	YNSMNGLO36	Llanddyfnam	L	M	M	L						Moderate
	YNSMNGLO55	Maltraeth	L	L	L	L						Moderate
	YNSMNGLO57	Hirde-Faig	L	L	L	L						Moderate
	YNSMNGLO58	Afon Cefni	L	L	L	L						Moderate
	YNSMNGLO59	Cors Bodwrog	L	L	L	L						Moderate
	YNSMNGLO60	Cerrigdrudion	L	L	L	L						Moderate
	YNSMNGLO61	Soar	M	L	M	L						Moderate
	YNSMNGLO62	Cerrigcinwen	H	M	M	M						High
	YNSMNGLO63	Rhosmeirch	L	L	L	L						Moderate
	YNSMNGLO66	Tywyn Trwan Common	L	L	L	L						Low
	YNSMNGLO68	Lyn Maelog - Tywyn Fferam	L	M	L	L						Moderate
	YNSMNGLO69	Bodrowydd	M	L	M	M						Moderate
	YNSMNGLO70	Afon Crigyll	L	L	L	L						Moderate
Landscape Habitats	YNSMNLH001	Tyddyn Gwyn	M	H	U	U	M	L	M	U		Moderate
	YNSMNLH006	Farmland - West Anglesey	L	L	M	U	M	U	L	M		Moderate
	YNSMNLH014	Cors Bodwrog	H	H	L	U	H	M	H	H		High
	YNSMNLH020	Cors Erddreiniog	O	H	L	U	H	M	O	O		Outstanding
	YNSMNLH022	Cors Erddreiniod (south section)	O	H	L	U	H	M	O	U		Unassessed
	YNSMNLH025	Tywyn Fferam & Llyn	H	H	U	U	U	H	H	H		High
	YNSMNLH027	Farmland - central Anglesey	L	M	M	U	M	U	L	M		Moderate
	YNSMNLH073	Cors Bodeilio	O	H	L	U	H	M	O	H		Outstanding
	YNSMNLH084	Farmland between old A5 and Railway line	L	L	M	U	L	U	L	M		Low
	YNSMNLH085	Farmland N.E. of Bryn Du	L	L	M	U	L	U	L	M		Low
	YNSMNLH089	Llangefni	L	L	M	U	M	L	L	M		Low
	YNSMNLH092	Llanerchymedd	L	L	M	U	U	L	L	L		Low
	YNSMNLH093	Farmland E. of Llyn Alaw	L	L	M	U	U	U	L	M		Moderate
	YNSMNLH095	Farmland N.W. of Menai Bridge	L	L	M	U	M	U	M	M		Moderate
	YNSMNLH097	Aberffraw Dunes to Rhosneigr	L	L	M	U	L	U	L	M		Low
	YNSMNLH107	Farmland N.W. of Maltraeth Marsh	L	M	M	U	M	M	M	M		Moderate
	YNSMNLH108	Cefni Plantation	U	L	M	U	M	M	M	M		Moderate
	YNSMNLH109	Cefni Reservoir	H	H	U	U	H	M	M	M		Moderate
	YNSMNLH112	Cors Hendre Fawr	M	M	M	U	M	L	M	U		Moderate
	YNSMNLH115	Farmland S.W. of Benllech	M	M	M	U	M	M	M	M		Moderate
YNSMNLH130	The Dingle	U	M	H	U	M	H	H	H		High	
YNSMNLH139	Gwenfro and Rhos-y-gad	H	H	L	U	H	M	O	H		Outstanding	

Visual & Sensory	YNSMNV008	North-west drumlins	M	H	M	L							Moderate
	YNSMNV012	Central smooth belt	M	H	L	L							Moderate
	YNSMNV013	Central/south-west craggy belt	M	H	M	M							Moderate
	YNSMNV014	Benllech hinterland	H	M	M	M							Moderate
	YNSMNV020	Caergeiliog craggy lowlands	M	M	M	L							Moderate
	YNSMNV022	Pentraeth valleys	M	H	M	L							Moderate
	YNSMNV023	Llangefni Dingle	H	H	O	H							High
	YNSMNV029	Llanfihangel lakes and dunes	M	M	H	H							Moderate
	YNSMNV057	Cefni Reservoir	M	M	H	M							Moderate
	YNSMNV059	Llangefni	M	M	M	M							Moderate
	YNSMNV070	Llanerchymedd	M	L	L	M							Moderate
	YNSMNV072	Gwalchmai	M	M	M	M							Moderate
	YNSMNV088	Caer Glaw Quarry	L	M	M	L							Low
	YNSMNV089	Mona airfield/showground	L	L	H	M							Low
YNSMNV091	A55 corridor	L	L	M	L							Low	
Historic Landscapes	YNSMNH006	A5 corridor and associated villages	O	O	H	O	H						Outstanding
	YNSMNH014	Talwrn	H	H	H	H	H						High
	YNSMNH015	Llangefni	H	M	M	H	H						High
	YNSMNH016	Fieldscape, central eastern Mon	O	O	M	O	H						Outstanding
	YNSMNH017	Rhostrehwfa	H	H	M	H	M						High
	YNSMNH019	Mona Airfield	U	M	H	H	M						High
	YNSMNH020	Cors Bodwrog	L	M	M	M	H						Moderate
	YNSMNH023	Aberffraw area	O	H	H	O	O						Outstanding
	YNSMNH024	Rhosneigr/Bryn Du area	M	M	M	M	M						Moderate
	YNSMNH034	Presaddfed area	H	O	H	H	U						High
	YNSMNH036	Llanerchymedd	H	H	M	H	H						High
	YNSMNH037	Fieldscape, Tre-Ysgawen	H	H	H	H	M						High
	YNSMNH041	Cors Erddreiniog	M	L	M	U	H						Moderate
	YNSMNH042	Parciau/Lligwy	O	O	H	O	H						Outstanding
	YNSMNH043	Fieldscape, eastern Mon	H	H	M	H	U						High
	YNSMNH079	Inland Southern Anglesey	O	O	H	O	H						Outstanding
YNSMNH080	Lledwigan	H	H	H	H	H						High	
Cultural Landscapes	YNSMNC006	A5 Road	O	O	O	O	O	L	M	M			Outstanding
	YNSMNC007	A5 Road Villages	H	M	M	U	H	H	M	M	M		Moderate
	YNSMNC008	A55 road	H	M	L	L	M	L	L	H	M		High
	YNSMNC009	Railway - Chester to Holyhead	H	O	O	O	O	M	H	H	O		Outstanding
	YNSMNC011	Rhosneigr	U	M	M	U	H	M	U	M	H		High
	YNSMNC012	Transport corridor area	H	M	H	U	H	H	H	M	M		High
	YNSMNC015	Llangefni - Oriol Ynys Mon	M	M	L	M	M	M	H	M	H		High
	YNSMNC016	Llanerchymedd	U	M	M	U	M	M	U	M	M		Moderate
	YNSMNC031	Sustrans Cycle Route	O	M	H	L	M	L	L	M	O		High
	YNSMNC033	Central Anglesey	U	H	H	U	H	H	H	H	H		High
	YNSMNC034	South west coast	U	H	O	U	H	O	U	H	H		Outstanding

**Extracts from Natural Resources Wales (NRW)
LANDMAP datasets for Geological Landscape (i) /
Landscape Habitats (ii) / Visual and Sensory (iii) /
Historic Landscape (iv) / Cultural Landscape (v)**

SURVEY DETAILS FOR YNSMNCLS010 - 2024-04-25

Area Unique ID: YNSMNCLS010

Aspect: Cultural Landscape Services

Area: North-west drumlins

Region: Anglesey

Survey Date: 2019-03-05

- Level 1: Lowland
- Level 2: Rolling Lowland
- Level 3: Open Rolling Lowland

Details

Q1 - Night time light pollution

- Slight

Q2 - Attractive views

- ...both in and out

Q3 - What are attractive views of/to?

- No Answer

Q4 - Perceptual and sensory qualities

- Tranquil

Q5 - Additional cultural, perceptual and sensory qualities and comment

- No Answer

Q6 - Wales Tranquil Area assessment (Zone B significant disturbance; Zone C some disturbance; Undisturbed; Urban)

- Mosaic of: Undisturbed, Zone C, Zone B; some unassessed areas

Q7 - International Dark Sky Reserve or Dark Sky Reserve

- No

Q8 - Sense of place/ local distinctiveness

- Moderate

Q9 - What contributes to sense of place/distinctiveness?

- No Answer

Q10 - Visual and sensory landscape evaluation

- Moderate

Q11 - Justification of Visual & Sensory landscape value

- Mainly moderate

Q12 - Scenic quality

- Moderate

Q13 - Character

- Moderate

Q14 - Geological Landscape evaluation

- Mosaic of: High or outstanding, Moderate

Q15 - Landscape Habitats evaluation

- Over 75% Moderate

Q16 - Historic Landscape evaluation

- Over 75% High or outstanding

Q17 - Are there any art/artistic expressions associated with the landscape/area?

- No Answer

Q19 - Are there any folklore/ legends associated with the landscape/area?

- No Answer

Q21 - Are there any events/traditions associated with the landscape/area?

- No Answer

Q23 - World Heritage Sites present

- No

Q24 - Feeling of Welsh national identity in the authority

- Approximately 57% of people in the area identify as Welsh. <https://statswales.gov.wales/Catalogue/Equality-and-Diversity/National-Identity/nationalidentity-by-year-identity>

Q25 - Welsh language in the authority

- Approximately 60% of people in the area speak Welsh. <https://statswales.gov.wales/Catalogue/Equality-and-Diversity/National-Identity/nationalidentity-by-year-identity>

Q26 - HER entries

- 455

Q27 - Cultural Heritage comment

- No Answer

Q28 - % HER classes represented >1 %

- The historic landscape within this area is comprised of CL2 24.615%, CL7 1.099%, CL14 5.714%, CL15 3.297%, CL16 5.714%, CL20 23.736%, CL27 1.099%, CL30 6.593%, CL31 9.231%, CL32 4.396%, CL35 5.055%, . The definitions for the list of HER classes is included in report appendix available from <https://cdn.naturalresources.wales/media/689522/eng-evidence-report-347-landmap-cultural-landscape-services-cultural-heritage.pdf>

Q29 - Archaeological Watching Briefs

- 9

SURVEY DETAILS FOR YNSMNCLS012 - 2024-04-25

Area Unique ID: YNSMNCLS012

Aspect: Cultural Landscape Services

Area: Mynydd Mechell

Region: Anglesey

Survey Date: 2019-03-05

- Level 1: Lowland
- Level 2: Rolling Lowland
- Level 3: Mosaic Rolling Lowland

Details

Q1 - Night time light pollution

- Slight

Q2 - Attractive views

- ...within

Q3 - What are attractive views of/to?

- No Answer

Q4 - Perceptual and sensory qualities

- Tranquil
- Wild

Q5 - Additional cultural, perceptual and sensory qualities and comment

- No Answer

Q6 - Wales Tranquil Area assessment (Zone B significant disturbance; Zone C some disturbance; Undisturbed; Urban)

- Mosaic of: Zone C, Undisturbed, Zone B

Q7 - International Dark Sky Reserve or Dark Sky Reserve

- No

Q8 - Sense of place/ local distinctiveness

- Strong

Q9 - What contributes to sense of place/distinctiveness?

- No Answer

Q10 - Visual and sensory landscape evaluation

- High

Q11 - Justification of Visual & Sensory landscape value

- All high

Q12 - Scenic quality

- High

Q13 - Character

- High

Q14 - Geological Landscape evaluation

- Over 75% Moderate

Q15 - Landscape Habitats evaluation

- Mosaic of: High or outstanding, Low, Moderate

Q16 - Historic Landscape evaluation

- Over 75% High or outstanding

Q17 - Are there any art/artistic expressions associated with the landscape/area?

- No Answer

Q19 - Are there any folklore/ legends associated with the landscape/area?

- No Answer

Q21 - Are there any events/traditions associated with the landscape/area?

- No Answer

Q23 - World Heritage Sites present

- No

Q24 - Feeling of Welsh national identity in the authority

- Approximately 57% of people in the area identify as Welsh. <https://statswales.gov.wales/Catalogue/Equality-and-Diversity/National-Identity/nationalidentity-by-year-identity>

Q25 - Welsh language in the authority

- Approximately 60% of people in the area speak Welsh. <https://statswales.gov.wales/Catalogue/Equality-and-Diversity/National-Identity/nationalidentity-by-year-identity>

Q26 - HER entries

- 29

Q27 - Cultural Heritage comment

- No Answer

Q28 - % HER classes represented >1 %

- The historic landscape within this area is comprised of CL2 10.345%, CL15 13.793%, CL16 6.897%, CL20 27.586%, CL29 10.345%, CL30 3.448%, CL31 20.69%, CL32 3.448%, CL35 3.448%, . The definitions for the list of HER classes is included in report appendix available from <https://cdn.naturalresources.wales/media/689522/eng-evidence-report-347-landmap-cultural-landscape-services-cultural-heritage.pdf>

Q29 - Archaeological Watching Briefs

- 0

- o 0

SURVEY DETAILS FOR YNSMNCLS013 - 2024-04-25

Area Unique ID: YNSMNCLS013

Aspect: Cultural Landscape Services

Area: Drumlins with windfarms

Region: Anglesey

Survey Date: 2019-03-05

- Level 1: Lowland
- Level 2: Rolling Lowland
- Level 3: Open Rolling Lowland

Details

Q1 - Night time light pollution

- Slight

Q2 - Attractive views

- ...both in and out

Q3 - What are attractive views of/to?

- No Answer

Q4 - Perceptual and sensory qualities

- Tranquil

Q5 - Additional cultural, perceptual and sensory qualities and comment

- No Answer

Q6 - Wales Tranquil Area assessment (Zone B significant disturbance; Zone C some disturbance; Undisturbed; Urban)

- Mosaic of: Zone C, Undisturbed, Zone B

Q7 - International Dark Sky Reserve or Dark Sky Reserve

- No

Q8 - Sense of place/ local distinctiveness

- Strong

Q9 - What contributes to sense of place/distinctiveness?

- No Answer

Q10 - Visual and sensory landscape evaluation

- Moderate

Q11 - Justification of Visual & Sensory landscape value

- Mix of low, moderate and high

Q12 - Scenic quality

- Low

Q13 - Character

- High

Q14 - Geological Landscape evaluation

- Over 75% High or outstanding

Q15 - Landscape Habitats evaluation

- Mosaic of: Low, Moderate, High or outstanding

Q16 - Historic Landscape evaluation

- Over 75% High or outstanding

Q17 - Are there any art/artistic expressions associated with the landscape/area?

- No Answer

Q19 - Are there any folklore/ legends associated with the landscape/area?

- No Answer

Q21 - Are there any events/traditions associated with the landscape/area?

- No Answer

Q23 - World Heritage Sites present

- No

Q24 - Feeling of Welsh national identity in the authority

- Approximately 57% of people in the area identify as Welsh. <https://statswales.gov.wales/Catalogue/Equality-and-Diversity/National-Identity/nationalidentity-by-year-identity>

Q25 - Welsh language in the authority

- Approximately 60% of people in the area speak Welsh. <https://statswales.gov.wales/Catalogue/Equality-and-Diversity/National-Identity/nationalidentity-by-year-identity>

Q26 - HER entries

- 156

Q27 - Cultural Heritage comment

- No Answer

Q28 - % HER classes represented >1 %

- The historic landscape within this area is comprised of CL2 13.462%, CL3 1.282%, CL10 1.282%, CL11 1.923%, CL15 1.923%, CL16 31.41%, CL20 7.692%, CL29 1.923%, CL30 5.769%, CL31 12.821%, CL32 8.974%, CL35 5.128%, . The definitions for the list of HER classes is included in report appendix available from <https://cdn.naturalresources.wales/media/689522/eng-evidence-report-347-landmap-cultural-landscape-services-cultural-heritage.pdf>

Q29 - Archaeological Watching Briefs

- 4

SURVEY DETAILS FOR YNSMNCLS014 - 2024-04-25

Area Unique ID: YNSMNCLS014

Aspect: Cultural Landscape Services

Area: North coast hinterland

Region: Anglesey

Survey Date: 2019-03-05

- Level 1: Lowland
- Level 2: Rolling Lowland
- Level 3: Mosaic Rolling Lowland

Details

Q1 - Night time light pollution

- Slight

Q2 - Attractive views

- ...both in and out

Q3 - What are attractive views of/to?

- No Answer

Q4 - Perceptual and sensory qualities

- Tranquil
- Spiritual

Q5 - Additional cultural, perceptual and sensory qualities and comment

- No Answer

Q6 - Wales Tranquil Area assessment (Zone B significant disturbance; Zone C some disturbance; Undisturbed; Urban)

- Mosaic of: Zone C, Undisturbed, Zone B; some unassessed areas

Q7 - International Dark Sky Reserve or Dark Sky Reserve

- No

Q8 - Sense of place/ local distinctiveness

- Strong

Q9 - What contributes to sense of place/distinctiveness?

- No Answer

Q10 - Visual and sensory landscape evaluation

- High

Q11 - Justification of Visual & Sensory landscape value

- Attractive and distinctive intricate landscape with rocky parts, views to coast, sheltered valleys. Generally unspoilt, except around Bull Bay

Q12 - Scenic quality

- High

Q13 - Character

- High

Q14 - Geological Landscape evaluation

- Mosaic of: Moderate, High or outstanding

Q15 - Landscape Habitats evaluation

- Mosaic of: Moderate, Low, High or outstanding

Q16 - Historic Landscape evaluation

- Over 75% High or outstanding

Q17 - Are there any art/artistic expressions associated with the landscape/area?

- No Answer

Q19 - Are there any folklore/ legends associated with the landscape/area?

- No Answer

Q21 - Are there any events/traditions associated with the landscape/area?

- No Answer

Q23 - World Heritage Sites present

- No

Q24 - Feeling of Welsh national identity in the authority

- Approximately 57% of people in the area identify as Welsh. <https://statswales.gov.wales/Catalogue/Equality-and-Diversity/National-Identity/nationalidentity-by-year-identity>

Q25 - Welsh language in the authority

- Approximately 60% of people in the area speak Welsh. <https://statswales.gov.wales/Catalogue/Equality-and-Diversity/National-Identity/nationalidentity-by-year-identity>

Q26 - HER entries

- 36

Q27 - Cultural Heritage comment

- No Answer

Q28 - % HER classes represented >1 %

- The historic landscape within this area is comprised of CL2 2.778%, CL3 2.778%, CL6 2.778%, CL7 2.778%, CL8 2.778%, CL10 2.778%, CL11 2.778%, CL12 2.778%, CL16 36.111%, CL17 2.778%, CL20 5.556%, CL29 2.778%, CL30 13.889%, CL31 11.111%, CL3 The definitions for the list of HER classes is included in report appendix available from <https://cdn.naturalresources.wales/media/689522/eng-evidence-report-347-landmap-cultural-landscape-services-cultural-heritage.pdf>

Q29 - Archaeological Watching Briefs

- 0

Q30 - Archaeological Excavations

- 0

SURVEY DETAILS FOR YNSMNCLS016 - 2024-04-25

Area Unique ID: YNSMNCLS016

Aspect: Cultural Landscape Services

Area: Central smooth belt

Region: Anglesey

Survey Date: 2019-03-05

- Level 1: Lowland
- Level 2: Rolling Lowland
- Level 3: Open Rolling Lowland

Details

Q1 - Night time light pollution

- Slight

Q2 - Attractive views

- ...both in and out

Q3 - What are attractive views of/to?

- No Answer

Q4 - Perceptual and sensory qualities

- Tranquil

Q5 - Additional cultural, perceptual and sensory qualities and comment

- No Answer

Q6 - Wales Tranquil Area assessment (Zone B significant disturbance; Zone C some disturbance; Undisturbed; Urban)

- Mosaic of: Undisturbed, Zone C, Zone B, Urban

Q7 - International Dark Sky Reserve or Dark Sky Reserve

- No

Q8 - Sense of place/ local distinctiveness

- Weak

Q9 - What contributes to sense of place/distinctiveness?

- No Answer

Q10 - Visual and sensory landscape evaluation

- Moderate

Q11 - Justification of Visual & Sensory landscape value

- Mainly moderate and low

Q12 - Scenic quality

- Moderate

Q13 - Character

- Low

Q14 - Geological Landscape evaluation

- Over 75% High or outstanding

Q15 - Landscape Habitats evaluation

- Mosaic of: Moderate, Low, High or outstanding

Q16 - Historic Landscape evaluation

- Over 75% High or outstanding

Q17 - Are there any art/artistic expressions associated with the landscape/area?

- No Answer

Q19 - Are there any folklore/ legends associated with the landscape/area?

- No Answer

Q21 - Are there any events/traditions associated with the landscape/area?

- No Answer

Q23 - World Heritage Sites present

- No

Q24 - Feeling of Welsh national identity in the authority

- Approximately 57% of people in the area identify as Welsh. <https://statswales.gov.wales/Catalogue/Equality-and-Diversity/National-Identity/nationalidentity-by-year-identity>

Q25 - Welsh language in the authority

- Approximately 60% of people in the area speak Welsh. <https://statswales.gov.wales/Catalogue/Equality-and-Diversity/National-Identity/nationalidentity-by-year-identity>

Q26 - HER entries

- 307

Q27 - Cultural Heritage comment

- No Answer

Q28 - % HER classes represented >1 %

- The historic landscape within this area is comprised of CL2 7.492%, CL11 4.235%, CL12 2.28%, CL14 2.606%, CL15 2.932%, CL16 6.189%, CL20 19.87%, CL26 1.303%, CL27 3.257%, CL29 3.583%, CL30 14.007%, CL31 10.749%, CL32 6.84%, CL35 1.303%, CL The definitions for the list of HER classes is included in report appendix available from <https://cdn.naturalresources.wales/media/689522/eng-evidence-report-347-landmap-cultural-landscape-services-cultural-heritage.pdf>

Q29 - Archaeological Watching Briefs

- 4

SURVEY DETAILS FOR YNSMNCLS071 - 2024-04-25

Area Unique ID: YNSMNCLS071

Aspect: Cultural Landscape Services

Area: Llyn Alaw

Region: Anglesey

Survey Date: 2019-03-05

- Level 1: Water
- Level 2: Inland Water (Including Associated Edge)
- Level 3: Lake

Details

Q1 - Night time light pollution

- Negligible

Q2 - Attractive views

- ...into

Q3 - What are attractive views of/to?

- No Answer

Q4 - Perceptual and sensory qualities

- Tranquil

Q5 - Additional cultural, perceptual and sensory qualities and comment

- No Answer

Q6 - Wales Tranquil Area assessment (Zone B significant disturbance; Zone C some disturbance; Undisturbed; Urban)

- Over 75% Undisturbed

Q7 - International Dark Sky Reserve or Dark Sky Reserve

- No

Q8 - Sense of place/ local distinctiveness

- Moderate

Q9 - What contributes to sense of place/distinctiveness?

- No Answer

Q10 - Visual and sensory landscape evaluation

- Moderate

Q11 - Justification of Visual & Sensory landscape value

- All moderate

Q12 - Scenic quality

- Moderate

Q13 - Character

- Moderate

Q14 - Geological Landscape evaluation

- Over 75% Moderate

Q15 - Landscape Habitats evaluation

- Over 75% High or outstanding

Q16 - Historic Landscape evaluation

- Over 75% High or outstanding

Q17 - Are there any art/artistic expressions associated with the landscape/area?

- No Answer

Q19 - Are there any folklore/ legends associated with the landscape/area?

- No Answer

Q21 - Are there any events/traditions associated with the landscape/area?

- No Answer

Q23 - World Heritage Sites present

- No

Q24 - Feeling of Welsh national identity in the authority

- Approximately 57% of people in the area identify as Welsh. <https://statswales.gov.wales/Catalogue/Equality-and-Diversity/National-Identity/nationalidentity-by-year-identity>

Q25 - Welsh language in the authority

- Approximately 60% of people in the area speak Welsh. <https://statswales.gov.wales/Catalogue/Equality-and-Diversity/National-Identity/nationalidentity-by-year-identity>

Q26 - HER entries

- 3

Q27 - Cultural Heritage comment

- No Answer

Q28 - % HER classes represented >1 %

- The historic landscape within this area is comprised of . The definitions for the list of HER classes is included in report appendix available from <https://cdn.naturalresources.wales/media/689522/eng-evidence-report-347-landmap-cultural-landscape-services-cultural-heritage.pdf>

Q29 - Archaeological Watching Briefs

- 0

Q30 - Archaeological Excavations

- 1

SURVEY DETAILS FOR YNSMNGGL002 - 2024-04-25

Area Unique ID: YNSMNGGL002

Aspect: Geological Landscape

Area: Llanfechel

Region: Anglesey

Survey Date: 2006-11-24

- Level 1: Lowland hills and valleys
- Level 2: Lowland glacial and fluvioglacial depositional terrain
- Level 3: Lowland till plain / field

Monitoring

Q1 - Date of monitoring?

- No Answer

Q1a - Monitoring undertaken by

- No Answer

Q1b - Has this record been updated following monitoring work?

- No Answer

Q1c - Change indicated by

- No Answer

Q1d - What has changed?

- No Answer

Q1e - Has the information ever been verified in the field?

- Yes
 - Field traverse.

Q2 - Does this area have a special or functional link with an adjacent area?

- Yes
 - Part of the Anglesey drumlin field [includes Llanfechel (YNSMNGGL2), Penrhyn (YNSMNG14), Gwredog (YNSMNG17), Bodedern (YNSMNG19) and Cleifiog Isal (YNSMNG74)].

Description

Q3 - If Classification is "Other", specify here

- Empty value

Q4 - What is the geographical and topographical character of this area?

- Extensive low, undulating terrain dominated by rounded, mounds of glacial clay (till) up to 800m across ("drumlins") (Quaternary: Pleistocene) - well developed especially in south-western and central areas. Spaces between mounds often boggy but may also show small outcrops of underlying metamorphic rocks, etc (Monian Supergroup, Cambrian). Some larger areas of craggy outcrop also exist, e.g. near Llanfaethlu and Elim. Small outcrops of Ordovician slaty shales also present.

Q4a - Where bedrock dominated, what is the dominant bedrock type?

- No Answer

Q4b - Where bedrock dominated, what is the age that characterises the aspect area?

- No Answer

Q4c - Where bedrock dominated, what is the major rock lithogy (-ies)?

- No Answer

Q4d - Where drift dominated, what is the dominant drift deposit?

- Glacial

Q4e - Where drift dominated, what is the major sediment that characterises the area?

- Boulder clay/till

Q5 - What is the characteristic Level 3 component of the area?

- Lowland till plain / field

Q6 - Which of the following is a significant contributor to the geological character of the area?

- Stratigraphic formation(s)
 - Scattered small outcrops of bedrock include New Harbour Group and Gwna Group (including minor Skerries" Group") [Monian Supergroup; Cambrian]; Ordovician sequence includes Carmel Formation [Ordovician: Arenig (Fennian)], Nantannog Formation [Ordovician: Arenig (Fennian) to mid Llanvirn (Abereidian)], probably also Llanbabo Formation [Ordovician: Caradoc, including Aurelucian].
- Superficial deposits
 - Dominated by Till [Quaternary: Pleistocene (Devensian)], with minor alluvium (fluvial) and probable lake and mire deposits [Quaternary: Recent (Holocene)].
- Structural features
 - Includes the Carmel Head Thrust System (Acadian).
- Active processes
 - Stream/river/mire.
- Past processes
 - Glacial.

Q7 - What additional subsidiary Level 3 components are notable?

- Other
 - Rock platform/ outcrop

Q8 - What Level 4 components are notable in this area?

- Slope
- Hill top
- Drumlin / Drumlin field
- Former lake (e.g. silted up)
- Urban / industrial development

Q9 - What active geological and geomorphological processes are significant in this area?

- Fluvial (stream, river)
- mire

Q10 - Are there components of significant hydrological importance?

- Yes
 - Fluvial (stream, river), mire.

Q11 - Are there any pedological processes that are significant in the area or have had a landscape forming effect?

- Yes
 - Valley mire.

Q12 - Is there current mineral extraction?

- No

Q13 - Has there been mineral extraction in the past?

- Yes
 - Monian schist, etc for building/walling.

Q14 - Are there SSSI/GCR sites here?

- Yes
 - Fferam-uchaf GCR site (Fferam-uchaf SSSI); Hen Borth GCR site (Quaternary of Wales; Henborth SSSI)

Q15 - Are there geological SINC, 2nd tier, or RIGS sites in the area?

- No

Evaluation

Q16 - Value

- High
 - Includes SSSIs mainly for bedrock geology, but relatively small areas only notified. Forms a major part of the important Anglesey drumlin field.

Q17 - Condition

- Good
 - Dominantly rural area with no significant development.

Q18 - Trend

- Constant
 - Dominantly rural area with no significant development.

Recommendations

Q19 - Existing management

- Generally Appropriate

Q20 - Existing management remarks:

- Dominantly rural area with no significant development.

Q21 - Principal management recommendations

- Maintain SSSIs in favourable condition by implementation of management plans and ensure that any potential RIGS sites are safeguarded using Local Plan policies and constraint mapping and that other significant features of geological or geomorphological significance in the area are not lost/damaged due to development, etc.

Q22 - Guideline

- Immediate
 - Maintain SSSIs in favourable condition by implementation of management plans.
- Medium Term
 - Ensure that RIGS surveys are completed for the area including of widespread Ordovician bedrock. Selected sites can be safeguarded using Local Plan policies and constraint mapping.
- Long Term
 - Ensure that other significant features of geological or geomorphological significance in the area are not lost/damaged due to development, etc., especially the integrity of the drumlin field.

Tolerance To Change

Q23 - Are there any significant threats to the current integrity and condition of the Earth Heritage features of the area?

- Yes
 - Significant non-SSSI areas (e.g. potential RIGS) may be at risk from infill, removal or development and scientifically important specimens, including fossils may be at risk from irresponsible or casual collecting. No such loss of important features or specimens should be considered acceptable. Key non-SSSI sites can be identified by RIGS surveys and consequently better protected and the use of codes of good practice supported by conservation legislation can help manage collecting issues.

Aspect Area Boundary

Q24 - To what level was this information site-surveyed?

- Level 3

Q25 - At 1:10,000, how much of the Aspect Area boundary is precise?

- Most
 - Aspect Area boundaries surveyed at 1:10,000, mapped at 1:25,000.

Q26 - What baseline information source was used for Aspect Area boundary mapping?

- Other
 - British Geological Survey maps, aerial photographs, OS 1:25,000 Landranger topographical map.

Q27 - If OS Data was used, what was the scale?

- 1:25,000