
morning dwelling to its immediate north-east. The asset is accessible via a section of road from the north from the country lane.

- 5.134. A review of historic mapping illustrates that the farm underwent a high degree of change in first half of the 20th century, with likely 19th century agricultural buildings demolished to make way for modern barns. Therefore, the farmhouse has been negatively impacted upon and retains little of its original farmstead.
- 5.135. The asset is also situated on the edge of an elevated point in the landscape, along with its principal elevation facing east, affords wide sweeping views of the landscape to the east and over the Llyn Alaw.
- 5.136. In addition, the surrounding fields, which includes part of the south-western area of Maen Hir Central are historically associated with the Listed Building, as indicated by Plot 13 on the Llanbabo Parish Tithe map (Fig. 31). These fields therefore have a contribution to the significance of the asset by being the historic landscape associated with the farmstead.

Experience – ‘What Matters and Why’

Church of St Pabo

- 5.137. The church and churchyard are best experienced from within their immediate surroundings within the base of the small valley whereby a small stream flow down toward the Llyn Alaw to the south-east, formed by the extent of the churchyard bordered by low stone walls, whereupon the historic and architectural qualities of the church can be appreciated at close proximity. In addition, the trees that line the small stream to the west of the asset somewhat provide a sensory experience, by breaking up the open landscape and creating a sense of semi-seclusion. The experience of the church for religious devotion or for communal activities can be appreciated primarily within the building, but also within the peaceful churchyard surroundings.
- 5.138. The Church is not visible from the Site (Photo 44) as the asset is located to the south of Maen Hir Central within a dip in the landscape. When approaching the church along the road from the north-east and south-west the asset is hidden until the dip has been entered and the church visible. However, the views onto the Church from the agricultural land that forms the Site are not relevant to its significance as they were not associated with the Listed Building. It can be considered that the idyllic dip landscape dip contributes to the significance of the church as it provides a sense of seclusion and privacy.

5.139. The Church itself is situated close to a country lane which provides access to the nearby farmsteads. The route is rarely frequented by traffic and pedestrians, therefore providing an experience of seclusion and remoteness devoid of noise pollution and enhancing the rural character of the asset.

Fferam-gyd

5.140. Whilst the asset cannot be publicly accessed, it is anticipated that the asset can also be best experienced up close within the farmstead from within the open courtyard spaces, where the historic architectural qualities can be viewed up close.

5.141. Fferam-gyd visually dominates the elevated position it occupies, and when approach the asset along the country road from the south, the asset's principal elevation can be viewed in its entirety. However, the asset cannot be viewed at all when approaching from the north-west or north-east along the lanes due to the intervening modern built form and tall mature trees and hedgerows. Whilst there is no interpretation of the asset to the public, from this southern view, agricultural structures can be viewed behind it, which adds to the interpretation of the asset being a farmhouse, as it currently is situated within a farmstead context. Therefore, the asset can be best experienced from the country lane to the south at the bottom of the slope.

5.142. It was noted that the surrounding fields have a historic association with the asset, notable Plot 13 on the Llanbabo Parish Tithe map (Fig. 31). This historic association is not perceptible within the landscape, but one could assume that a fields near to the farmstead are associated with it. Although, this historic relationship between parts of the Site and asset can only be experienced through historic mapping.

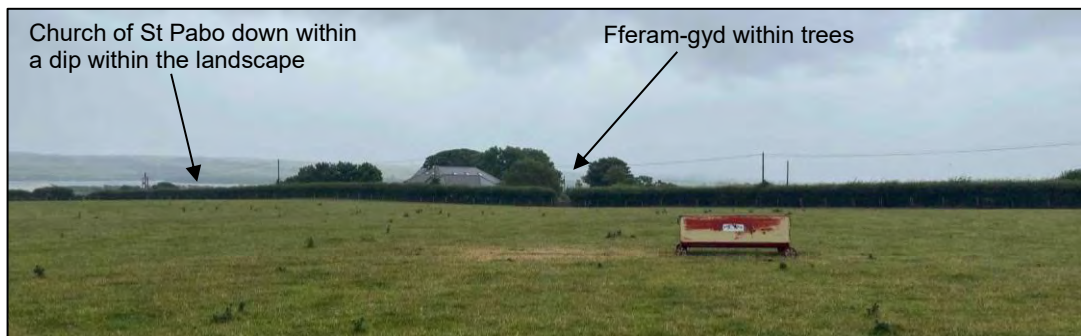


Photo 44 Fferam-gyd and Church of St Pabo, viewed from the north-east

Scheduled Pen-y-Morwyd Round Barrow and Llifad Carreglefn (D29)

Pen-y-Morwyd Round Barrow

- 5.143. The Scheduled Pen-y-Morwyd Round Barrow (Photo 45; Fig. 2: **D29.1**) lies c.480m to the north of the Site. The monument is described in listing as:

The monument comprises the remains of an earthen round barrow, a burial monument, which probably dates to the Bronze Age (c.2300 - 800 BC). It is a good example of a round barrow, prominently sited on top of a ridge named Pen-y- Morwyd. The barrow is approximately 20m in diameter and 2m high. A field wall runs over the top of the monument. The barrow is also located c.160m north of the earthwork enclosure known as Llifad, Carreglefn (Cadw: AN079), the two sites are inter-visible (Cadw ND).



Photo 45 Pen-y-Morwyd Round Barrow, viewed from the west

- 5.144. The monument is of national importance for its potential to enhance our knowledge of prehistoric burial and ritual practices. It is an important relic of a prehistoric funerary and ritual landscape and retains significant archaeological potential. There is a strong probability of the presence of both intact ritual and burial deposits, together with environmental and structural evidence. Barrows may be part of a larger cluster of monuments and their importance can further enhanced by their group value (Cadw ND). However, it has suffered from erosion associated with ploughing and animal trampling. The hilltop setting also makes a contribution to the significance of the Scheduled monument.

Llifad Carreglefn

- 5.145. The Scheduled Llifad Carreglefn (Photo 46; Fig. 2: **D29.2**) lies approximately c.230m to the north of the Site. The monument is described in listing as:

The monument comprises the remains of a nearly square earthwork enclosure, consisting of a ditch between two banks enclosing an area 42m west to east, and 39m north to south. It may have been a farmstead or stock enclosure and is probably prehistoric in date. It is situated on a south-west facing slope. The north, south and west sides are nearly ploughed out, but the eastern side remains as a ditch 2m deep, an inner bank nearly 1m high and an outer bank 0.3m high. The ditch is about 4m wide, as are the inner and outer banks. The entrance was on the western side. An earthen round barrow (Pen-y-Morwyd Round Barrow) is situated on the hilltop c.160m north of the earthwork, and the two sites are inter-visible (Cadw ND).

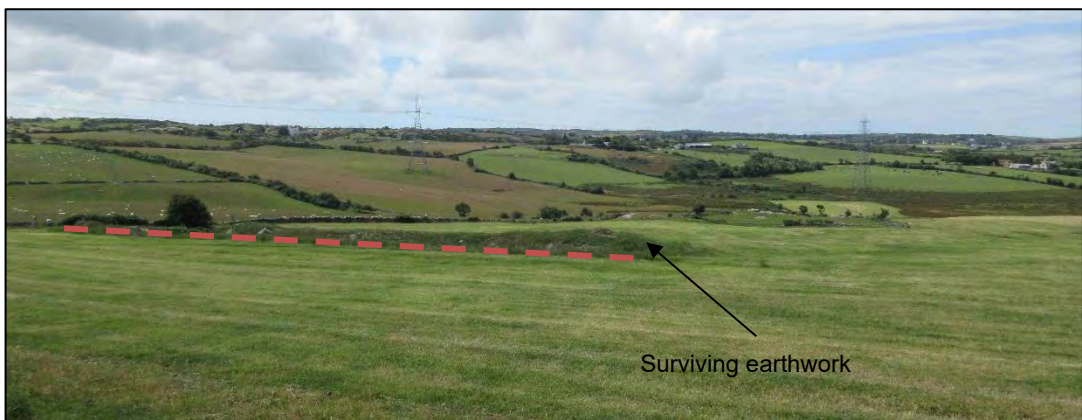


Photo 46 Llifad Carreglefn, viewed from the north-east

- 5.146. The monument is of national importance for its potential to enhance our knowledge of prehistoric agricultural and domestic practices. It retains significant archaeological potential, with a strong probability of the presence of associated archaeological features and deposits. The structure itself may be expected to contain information concerning chronology and building techniques (Cadw ND).

Physical Surrounds – ‘What Matters and Why’

Pen-y-Morwyd Round Barrow

- 5.147. The primary aspect of the setting of the Pen-y-Morwyd Round Barrow comprises its topographically prominent position of the barrow itself, located on the top of Pen-y-Morwyd, overlooking the lower-lying ground and undulating hills which surround it. The Scheduled Monuments setting atop one of the highest hills within the immediate landscape contributes to the asset’s significance. From this elevated position the views of the landscape include the Irish Sea to the north, as well as multiple villages and modern infrastructure, such as wind turbines, a newly constructed solar farm,

and a nuclear power station to the asset's north and north-west (Photo 47). These modern structures, importantly, do not compete with the prominence of the barrow, and from ground level in all directions the barrow remains visible.

5.148. The connection with other barrows and Bronze Age burial cists in the wider landscape, which form contemporary and comparable monuments, aiding the interpretation and legibility of the Scheduled barrow as part of the wider prehistoric funerary landscape of the area contribute to its significance. In this way, the possible burial cist of Werthyr, for example, and others in the surrounding landscape form part of the setting contributing to the significance of this Scheduled monument. In addition, the round barrow may also have an association with the Scheduled earthwork Llifad Carreglefn c.160m to the south. Whilst the round barrow predates this earthwork, the barrow may have influenced the siting of the earthwork enclosure.

5.149. It should be noted that the current landscape is not a preserved prehistoric landscape, but rather a post-medieval/modern landscape of large fields and farmsteads. Therefore, whilst the wider landscape may not contribute to the significance of the barrow, the hill that it is situated upon, and its immediate rural setting surrounded by fields, provide a crucial and important aspect of its setting, allowing for the round barrow to be unobscured by modern development.

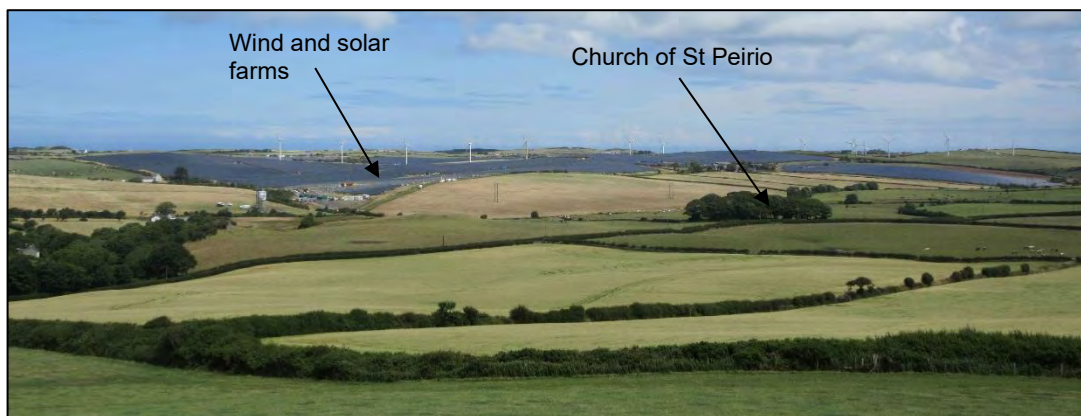


Photo 47 View of the windfarm, newly constructed solar farm, and Church of St Peirio from Pen-y-Morwyd Round Barrow, viewed from the south-west

Llifad, Carreglefn

5.150. In comparison to other Scheduled Monuments such as standing stones and round barrows, these types of monuments can be easily interpreted. However, this Scheduled Monument comprises, for the majority shallow earthworks of an enclosure, with one side of the enclosure a bit more prominent. These earthworks

are not perceptible within the landscape by a passerby, for example moving east to west along the public footpath c.180m to the north of the asset.

- 5.151. The primary aspect of the setting of the Llifad Carreglefn comprises its topographically position on the south-west slope of Pen-y-Morwyd, which is currently within an irregular shaped field with the drystone wall passing close to the eastern edge of the monument, demarcated by the surviving bank and ditch. The positioning of the enclosure on the south-west side of the hill allows for wide expansive views across the lower valley to the south, south-west and south-east, which could have also been to avoid wind or certain weather conditions you would experience at the top of a hill for example.
- 5.152. The Scheduled enclosure is located c.160m to the south of the Pen-y-Morwyd Round Barrow on top of the hill, and both share intervisibility. Their physical location and closeness to one another contributes to Llifad Carreglefn's significance as both monuments may be associated with one another, or more likely influenced the positioning of the enclosure itself. In addition, a similar large, defended enclosure comprising a non-designated earthwork with a 4m wide ditch is located c.2.7km to the north-east (Fig. 6: 82). A lot of late prehistoric/Roman settlement and agricultural features were recorded within this area which illustrates, that whilst an enclosure may be visible as an earthwork, the wider landscape has evidence for a well settled landscape during these periods. This earthwork, arguably, contributes to the Scheduled Monument's significance as they are both similar in character and allows for the understanding of prehistoric/Roman defended settlements within this area of Anglesey. Previous investigations also indicate that there is further potential for associated remains around the Scheduled Monument as below ground features as well.

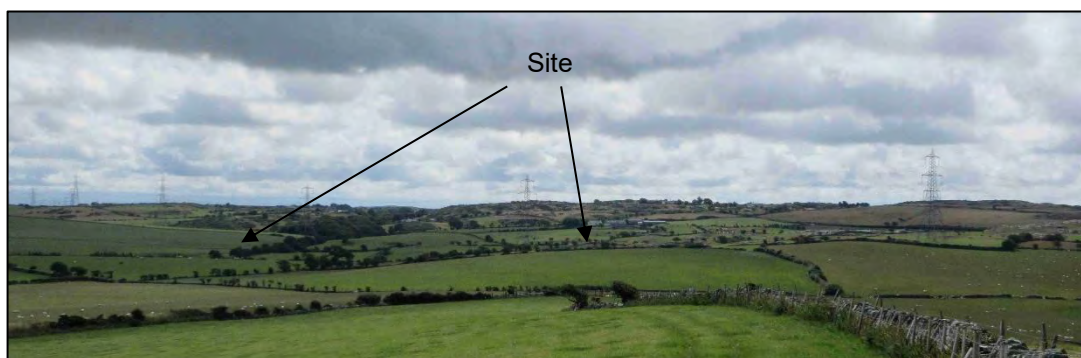


Photo 48 View of Site from Llifad Carreglefn, viewed from the north

5.153. The surrounding landscape is that of a post-medieval/modern agricultural one (Photo 48), comprising many large fields and farmsteads, and therefore the current landscape is not a surviving prehistoric/Roman one. The Scheduled Monument, in essence, is situated within rural post-medieval/modern rural setting and has no functional relationships with the surrounding fieldscape layout.

Experience – ‘What Matters and Why’

Pen-y-Morwyd Round Barrow

5.154. Extensive views from the barrow across the wider landscape (including the coast) allow an understanding of the prominent position occupied by the barrow. While the fact of the views facilitates understanding of the topographic setting of the barrow, the views themselves are by no means unchanged from the original setting of the monument. While topography would be generally consistent, post-medieval enclosure of fields, the later modern agricultural landscape and frequent evidence of power generation (such as wind turbines and Wylfa Power Station and the newly constructed solar farm to the north) attest to changes in the landscape.

5.155. The mound, which forms the Scheduled monument, remains as a visible feature in the wider landscape (despite erosion). Views to the asset allow its form and prominence to be understood, and in this way contribute to significance. However, the barrow itself can also be experienced and appreciated up-close, as a public footpath passes east to west across the hill and past the barrow itself. However, there are no information panels to assist with the identification and interpretation of the asset, and the presence of drystone wall on top of the barrow (Photo 45) also negatively impacts the asset as only half the barrow can be viewed.

Llifad, Carreglefn

5.156. Llifad Carreglefn is situated within the south-east corner of a field with a drystone wall close to its eastern side. In its current state, only the eastern bank and ditch survive as the majority of the earthwork has been removed by later ploughing. Therefore, the surviving banks and ditch could easily be misinterpreted as former field boundary. A public footpath runs along the top of the nearby hilltop (and runs past the round barrow) on an orientation of east to west. Therefore, whilst there is no public access to the asset, it can be viewed at a distance from atop the hill looking south. However, there are no information panels along this public footpath to aid in the interpretation or presentation of the monument, and it is likely that member of the public will not notice the earthworks from this point. The monument is also positioned close the

Scheduled round barrow, therefore may have been intentional invisibility with these two assets, providing some interpretation has to the positioning of the enclosure.

- 5.157. The asset is best experienced from the public footpath to the north atop Pen-y-Morwyd. From this high vantage point, the remaining earthworks and its rural landscape setting can be best appreciated. In addition, the Scheduled Monument can also be experience via LiDAR Imagery (Fig. 20) as the entire enclosure is present as an above ground enclosure and its more hexagonal in shape. There is sense of seclusion, remoteness and tranquillity due to no modern roads passing through this small valley, and the sound of farm animals and farm equipment can be heard. The earthworks were once inhabited and may have been a bustling working farmstead during the prehistoric and/or Roman periods, therefore the sounds emitting from nearby modern farmsteads are somewhat reflective of the possible function of the enclosure.

Grade Listed Church of St Peirio (D30)

- 5.158. The Grade II Listed Church of St Peirio lies c.940m to the west of Maen Hir North (Photo 49; Fig. 2: **D30**). The Listed building has architectural and historic interest inherent within its physical fabric, derived from its historic, evidential and aesthetic values. As a church, this interest is also derived in part from the building's communal value, as a religious structure. Church of St Peirio is described in the listing as:

A 12th century rural church restored and re-roofed in the late 19th century, the windows containing small panes of coloured glass set in geometric and floriate designs, a characteristic sign of the influence of the patron, Lord Stanley of Alderley. He became a convert to the Muslim religion and gave money to local rural churches on condition that any restoration work should include work which reflected elements of his religion. The south-west porch is a late 19th century addition (Cadw ND).

Exterior – A simple rural church with a continuous nave and chancel, gabled south-west porch and west bellcote. Built of mortared rubble masonry with roughly hewn foundations. It has a slate roof with slate copings and stone cross gable finial to chancel and porch. The windows are late 19th century and has lights with shallow pointed heads in rectangular frames. The north and south walls have single windows, and the east window has a paired light.

The entry to the south-west porch has a freestone lintel with shallow pointed arched soffit (Cadw ND).

5.159. The Church is listed as a simple, rural church of medieval origins. It retains medieval a fabric, but is largely of 19th century character, a simple secular building. The significance of the Church is primarily derived from this historic (illustrative and associative) value, as well as aesthetic and evidential values embodied in its physical form and the survival of fabric and elements of medieval, post-medieval and modern craftsmanship, for example the windows contain small panes of coloured glass set in geometric and floriate designs, which is a characteristic sign of the influence of the patron, Lord Stanley of Alderley. Lord Stanley of Alderley became a convert to the Muslim religion and gave money to local rural churches on condition that any restoration work should include work which reflected elements of his religion. Communal value also contributes to the significance of the Church, which was an important communal and ritual space from the 13th century onwards, whereby it formed the focal point of the surrounding countryside.



Photo 49 **The Church of St Peirio, viewed from the south**

Physical Surrounds – ‘What Matters and Why’

5.160. The primary aspect of the setting of the Church comprises its immediate surroundings. The Church lies within a funnel-shaped churchyard. This churchyard is delineated by a drystone wall. The churchyard contains numerous trees which lead toward the church from the direction of the road and surround the building. Graves surround the church. The relationship between the churchyard, walls, graves and church, forms the important and crucial the setting of the church contributing to its significance.

5.161. Other churches within the medieval landscape form part of the wider setting of this historic asset. It is notable that the windows within the church are of a similar character and date to those within the Church of St Mary at Bodewryd. The windows in these churches were installed under the influence of Lord Stanley of Alderley, who provided money to local churches for restoration work, and specified that elements relating to Islam. The connection between this church and others within the medieval landscape, and the 19th-century alterations made to churches in this area under the influence of Lord Stanley of Alderley, forms part of the setting of the church contributing to significance. These structures do not share intervisibility. Their connection is expressed by similar characteristics.

5.162. The wider surrounding landscape is an agricultural one that is sparsely populated with farmsteads and isolated dwellings. The surrounding immediate fields contribute to the asset's significance as it is within a very secluded siting within a rural landscape and is likely to not have altered in use for agriculture since the church's construction in the medieval period. The church itself would have been a focal point of worship and community for the people of the Parish of Rhosbeirio, with access to the nearby road to the south which linked up with nearby farmsteads (no known recorded medieval farmsteads are present within the parish). Therefore, the fields that surround the church and its churchyard provide a positive contribution to the asset's setting.

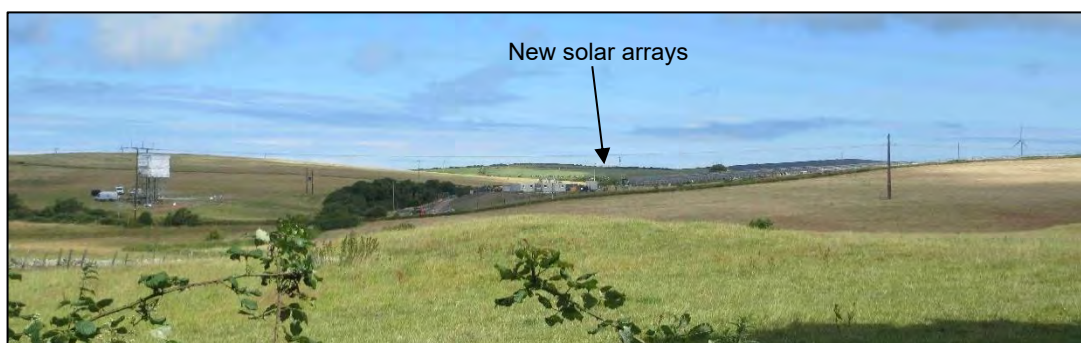


Photo 50 The newly constructed solar farm to the north of the Church of St Peirio, viewed from the south

5.163. However, modern development has encroached upon the wider setting of the Listed Building, as wind turbines are located c.1.2km to the north and a newly constructed solar farm has been constructed c.350m to the north (Photo 50). The presence of multiple areas of renewable energy sources within the immediate environs of the asset, illustrates the wider landscape, in part, is being altered to produce both food

and energy. Whilst parts of the wider landscape are being altered to produce energy, the fields that immediately surround the church act as an important buffer between the solar farm and the asset (Photo 50), further highlights the importance of the church's rural setting.

Experience – 'What Matters and Why'

- 5.164. The trees which surround the church generally screen the building from view (Photo 51), from areas beyond the churchyard. The church lies on low ground (at approximately 25m aOD). The surrounding land rises to the north, east, west and at a greater distance, south, to low hills of between c.40m to c.70m aOD. Coupled with the surrounding trees within the churchyard, the topographic setting of the church also suggests that the Listed Building was not constructed to be a highly visible, prominent feature of the landscape. Views toward the church are limited by the vegetation and topography, and where glimpsed views are possible, they convey a sense of the seclusion of the Listed Building. This limited intervisibility between a viewer is apparent when approaching the churchyard from the west and east along the road as the churchyard looks like a small, wooded area. The church itself is imperceptible within the landscape due to the mature hedgerows and trees that line the churchyard's boundary, although it is likely that that in the autumn and winter months the asset might be glimpsed through the vegetation.

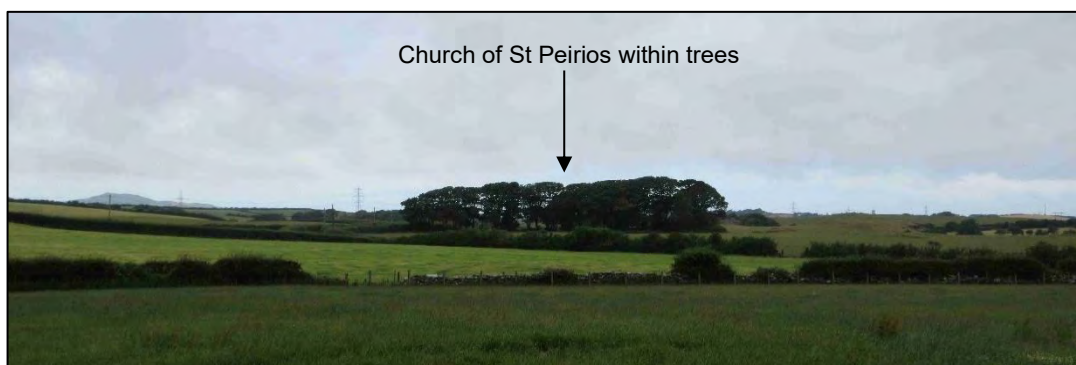


Photo 51 The Church of St Peirio, viewed from the Site, Maen Hir North from the east

- 5.165. When approaching the church itself on foot, a small section of wall and a gate indicate the entrance, and when moving through the gate the church appears, which is framed by the mature trees that line the boundary of the churchyard. The presence of the trees and vegetation along the boundaries assist in obscuring the surrounding fields, but they are still glimpsed through the foliage. This image and the framing of the trees, coupled with the gravestones and the boundary wall around the churchyard contribute to the experience of the asset, and provides a sense of a secluded rural

church. In addition to this, there are sensory experiences to be had, which includes the sound of the wind through the trees and the nearby road not being frequented by traffic. These sensory contributes to the asset's experience as an isolated rural church.

5.166. The stunted nature of these views, and the fact that wide visibility does not appear to have been part of the design intention of this structure mean that views toward the church from the Site are not considered to make a contribution to the overall significance of the Listed building. The low visibility of the church forms part of its setting, facilitated by topography and vegetation.

5.167. Therefore, it was concluded that the best way to experience the historic and architectural qualities of the Church of St Peirio are within its secluded churchyard, and from within the church itself, especially in order to experience the 19th century-stained glass windows.

Initial Recommendations

5.168. Following completion of Stage 2, a small sample of designated historic assets in the vicinity of each of the Site areas were considered for further assessment in order to understand likely impacts from parameter plans available and help inform the development of project design and to ensure mitigation measures where required can be put in place.

5.169. A detailed settings assessment (Stage 3) will be carried out from all sensitive assets for the DCO submission (informed by additional site visits, research and understanding of detailed design).

Maen Hir North

5.170. The Grade II Listed Gwredog (Fig. 2: **D8**) is located within proximity to the redline boundary of Maen Hir North and the parameter plans indicate the fields that immediately surround the farmstead are listed as potential areas of PV Arrays. The setting assessment identified that the surrounding fields contribute to the significance of the asset as they are historically associated with the farmstead and form part of its wider rural setting. There will be a careful consideration of the location of the panels and any additional mitigation measures to ensure the placing PV Arrays within proximity to Gwredog.

5.171. The Scheduled Bodewryd Standing Stone (Fig. 2: **D6**) is located outside of the Site within an open field. Proposed PV Arrays are planned for a field plot c.220m to the west and c.260m to the north-west, and a BESS and substation c.160m to the north. As noted previously prehistoric standing stones have usually been placed within prominent positions within the landscape, and sometimes share intervisibility between other similar monuments. For the proposed BESS to the north of the historic asset, it is recommended that the woodland buffer is retained and enhanced to reduce intervisibility between the two. For the PV Arrays, it is considered that through careful layout and where required, the introduction of buffers and intervening vegetation, it is considered that any potential impacts could be minimised. It should be noted that the Bodewryd Standing Stone is located within the Cable Route Corridor and the potential for physical impacts to the Scheduled Monument are discussed in Section 4 of this assessment.

Maen Hir Central

5.172. The Grade II Fferam-gyd is located c.83m to the south of Maen Hir Central (Fig. 2: **D26**). The setting assessment has identified that the farmstead has been negatively impacted by modern development of the farm and the demolition of historically associated agricultural buildings over time. Nonetheless, Fferam-gyd and its principal elevation faces east over an open field and across the Llyn Alaw, whereby the asset can be experienced from the lane to the east. It is anticipated that some distant PV Arrays might be viewed from the asset, and those located to the north of the asset will likely be blocked by intervening farm buildings and vegetation. It is recommended that careful placing of PV Arrays to ensure that views from its principal elevation are not impacted upon.

5.173. The Grade II* Listed Church of St Pabo is located c.330m to the south of Maen Hir Central, (Fig. 2: **D26**). It was identified that the historic asset's important setting as a rural church is within its oval-shaped churchyard within the base of a small valley that rises to north, west and south-east. Whilst PV Arrays are proposed to the north of the asset beyond the farmstead, there could be incidental views of solar arrays in places. These views are not likely to harm the significance of the historic asset, but it is recommended that the positioning of PV Arrays should be considered.

Maen Hir South A

5.174. Maen Chwyf is located within the northern area of Maen Hir South A, and the Llys Einion Standing Stone is located c.85m to the north of Maen Hir South A (Fig. 3: **D9**).

The assessment identified that these two Scheduled monuments are located within proximity with one another within a decidedly open rural landscape and likely had intentional intervisibility between them and views out to the east, contributing to their significance. Following consideration of the setting of these assets, an area of mitigation is proposed within the field of the enclosure and next to it to ensure the assets are not impacted upon in terms of their intervisibility with one another and the wider landscape.

- 5.175. The Grade II Listed Llwydiarth Esgob Farmhouse and its Grade II* Listed Ranges and Hammels are located c.40m to the south-east of Maen Hir South A (Fig. 3: **D15**). These assets have recently been included into Stage 2 of this assessment due to the newly incorporated of Maen Hir South A. These assets will require further consideration through additional site visits. None the less, the Step 1 assessment identified that the working farmstead forms the assets' important and crucial setting. In addition, the fields that immediately surround the farmstead forms the farmstead's important wider agricultural setting. The emerging parameter plan indicates that some of the nearby fields to the north-west are marked for mitigation/enhancement/underground cabling and access. It is recommended that these fields remain as fields to preserve the immediate agricultural setting. The parameter plan indicates that some nearby fields c.200m to the north-west are earmarked for PV Arrays, but this is to be assessed during the next site visit.

Maen Hir South B

- 5.176. Prehistoric monuments like the Lech Golman standing stone (Fig. 3: **D2**), located c.70m to the south and west of the boundary of Maen Hir South B, were positioned within prominent locations within the landscape and often share association with other prehistoric monuments. The Cadw listing for the Lech Golman, for example, specifically states that intervisibility between the standing stone and the Scheduled Carreg Leidr standing stone c.1.3km to the north-west contribute both to their significance. It is currently uncertain whether there is intervisibility and will have to be assessed during the next site visit. None the less, if there is intervisibility between the two Scheduled Monuments, mitigation by design can be in the form of positioning PV Arrays away from Scheduled standing stones so they do not encroach upon the monuments and preserving the open rural landscape and lines of sight between other monuments as well.

5.177. The Grade II Listed Church of St Michael is located to the immediate north-east of Maen Hir South B (Fig. 3: **D19**). It is primarily a rural church, and its immediate churchyard forms the asset's immediate and crucial setting. The emerging parameter plan indicates that the field to the immediate south of the asset is earmarked for PV Arrays. It is recommended that through careful layout of the PV Arrays, and where required, the introduction of buffers and intervening vegetation, it is considered that any potential impacts could be minimised.

6. PRELIMINARY CONCLUSIONS

- 6.1. This assessment forms an Appendix to the Cultural Heritage PIER Chapter prepared for the Project. This a preliminary assessment which will be updated in due course with additional information for the submission with the DCO. This document does not represent a ‘full or complete assessment’ with further surveys and assessment work on-going at the time of writing. The purpose of this document is to present the assessment work completed to date, to set out the planned further work and to present broad, narratives on the likely effects of the proposed development. This is mentioned in the methodology and limitations sections above, and discussed within the PEIR Chapter 8. The conclusions presented below are therefore preliminary, based on information collated to date, and will be updated and revise in due course, as new data becomes available.

Physical effects

Palaeolithic to Neolithic Remains

- 6.2. The assessment has identified that there is a low potential for Palaeolithic and Mesolithic remains within the Site. A single findspot of three pieces of Mesolithic worked flint was recorded near to the shore of the Llyn Alaw, Maen Hir Central, perhaps suggesting that activity during this period may have been focused upon the edge of water courses or former marshland in the area. In addition, a number of Mesolithic pieces of worked flint were recorded to the west of Maen Hir South B, which unlike those found near the Llyn Alaw, were not located within an area with a known water course. Should such further discoveries occur within the Site, any artefacts will likely be within the topsoil/subsoil layers, or as residual objects within later features.
- 6.3. The assessment has identified that there is a moderate potential for sporadic Neolithic remains within the Site. Evidence of the period is recorded solely within Maen Hir Central, where an excavation recorded two pits containing organic remains, such as hazelnuts, which were radiocarbon dated, and an urned cremation was identified during an evaluation for construction of transmission towers for a power line. Furthermore, a Scheduled Neolithic chambered tomb is located within the northern area of Maen Hir South A, and stones with prehistoric cup marks carved into them within the southern part of Maen Hir South A. Whilst the upstanding remains of the chambered tomb are visible, there is likely to additional below ground archaeological remains within and beyond the boundary of the Scheduled Monument.

In addition, the location of the cup marks will also have the potential for further below ground archaeological remains within their proximity. Therefore, based on the presence of such remains, there is a potential for further such remains or organic materials of Neolithic settlement or burials within the Site, in particular within Maen Hir Central and Maen Hir South A that could be associated with the aforementioned recorded remains.

Bronze Age remains

- 6.4. The assessment has identified that the evidence for the Bronze Age is extensively recorded across the Site and the study area. These remains consist of round barrows placed within prominent high and low-lying positions within the landscape, multiple burnt mounds and multiple standing stones, and findspots.
- 6.5. Within and around Maen Hir North and South there are Bronze Age burnt mounds, in particular one burnt mound had associated pits and postholes located near to a water course within the north-eastern area of Maen Hir North. The siting of burnt mounds near water courses is a common theme, and the assessment has identified that many other burnt mounds recorded within the study area are located near to streams/streams. Overall, whilst there is a high potential for further Bronze Age archaeological remains within Maen Hir North associated with a burnt mound, there is a moderate potential for further burnt mounds due to the presence of many streams/water courses within the rest of the Site.
- 6.6. In addition, whilst a small number of Bronze Age round barrows and burial chambers are recorded as upstanding monuments within the study area, some of which are Scheduled Monuments, archaeological investigations have recorded numerous ring ditches of potential round barrows within the study area around Maen Hir North, Central and South B. The presence of these potential round barrows/ring ditches indicates that the Site is located within a funerary landscape where both prominent elevated and low-lying positions were the siting of round barrows. Therefore, there is a high potential for further ring ditches to be located within the Site.
- 6.7. Furthermore, recorded within the study area are also a number of Scheduled Bronze Age standing stones, in particular within proximity to Maen Hir North and South A and South B parts of the Site. The areas of land around these standing stones retains significant archaeological potential, with a strong probability of the presence of associated archaeological features and deposits (Cadw ND). Parcels of land near to

these Scheduled Monuments therefore have a high potential for further archaeological remains associated with the standing stones.

Iron Age and Roman remains

- 6.8. The assessment has recorded extensive Iron Age settlement within the Site and study area, in particular around Maen Hir North and within Maen Hir South B. Whilst these sites date to the Iron Age, they also cross over into the Roman period, illustrating continued settlement in these areas over the two periods.
- 6.9. Towards the centre of the Maen Hir South B a small sub-circular enclosure was recorded as very shallow earthworks on the LiDAR Imagery. Despite its small size and its non-defensive location, it has a substantial bank and a ditch measuring 3m in width with evidence for internal settlement. In addition, the projected route of a Roman road is suggested to pass through the southern area of Maen Hir South B. The route of the road was suggested in the 19th century, with further additional projections of the road in the 20th century; however, the road is yet to be investigated to confirm whether the feature or any roadside activity exists.
- 6.10. Evidence for the Iron Age period within Maen Hir Central is limited to two findspots of a quern stone and pieces of slag close to the shore of Llyn Alaw, suggesting potential settlement within the vicinity of these findspot locations. Furthermore, three prehistoric enclosures, identified as cropmarks, are also located within and around the western area of Maen Hir Central.
- 6.11. Extensive Late Prehistoric and Roman settlement was recorded c.380m to the north of Maen Hir North, comprising a defensive enclosure, ditches, pits, livestock enclosure and roundhouses. In addition, the Scheduled remains of a Roman enclosure are located c.300m to the north-west of the Site also. It is therefore likely that the surrounding landscape, including the northern area of Maen Hir North would have been the wider agricultural hinterland to these nearby settlement sites. However, the presence of additional unrecorded settlement sites within the Site should not be discounted.
- 6.12. Therefore, based on the presence extensive Iron Age and Romans remains recorded within the Site and study area, there is a high potential for further remains from these two periods within the Site.

Early medieval to medieval remains

- 6.13. Based on the available information, it is considered the Site formed the rural hinterland of settlements and farmsteads that surround the Site from the early medieval period onwards. Evidence of the early medieval period within the study area are the remains of religious sites, such as holy wells, a nunnery and inscribed stones within churchyards and churches (both isolated rural churches and those located within settlements). One recorded area of early medieval settlement is recorded c.1km to the east of Maen Hir Central. Therefore, there is a low potential for early medieval remains within the Site, although should such remains be encountered, they will likely be agricultural in character.
- 6.14. Evidence of the medieval period is recorded within the Site. Multiple watermills are recorded along the course of the Afon Wgyr to the south-west of Plas Bodewryd, Maen Hir North, indicating that this river was the focus for flour production and therefore further medieval archaeological remains may be present within the vicinity of these recorded mills. Within the eastern area of Maen Hir Central medieval agricultural features and a potential house or church platform are recorded. The platform is known as 'Cae Hen Eglwys', or 'Old Church Field' and by tradition the site is an old church (Pearson 1995). A review of LiDAR Imagery indicates that a square or rectangular shaped house platform does not survive as an above ground earthwork within the recorded location of the dwelling or church site. It could be that platform was later ploughed away, but this is uncertain. The platform has not been investigated to ascertain whether the feature is indeed a church or a dwelling.
- 6.15. Therefore, based on the prevailing archaeological evidence, there is a high potential for medieval agricultural remains in form of former fields boundaries within the Site, and a moderate potential for medieval settlement within particular land parcels within Maen Hir North and Central based on the presence of watermill and dwelling/church sites. Furthermore, it can be considered that there is low potential for further medieval settlement within the rest of the Site.

Post-medieval and modern remains

- 6.16. Whilst there is a heavy presence of quarrying and mining recorded within the study area associated with activity at Parys Mountain, evidence of mining is recorded to the immediate east of Maen Hir North. A review of historic mapping indicates that there are no known mines located within the Site. In addition, a review of 19th and 20th century mapping illustrates that small, isolated areas of stone quarrying are recorded

within the Site and study area. These quarries were likely opened to utilise the stone locally for the construction of stone walls for field boundaries, dwellings or farm buildings. There is a high potential for further unrecorded quarries within the Site. One field noted on the Amlwch Parish Tithe Map is named 'Pyllan Budron', or 'Dirty Pit' near to the Grade II Listed Gwredog, Maen Hir North, may indicate the presence of quarries (or mines). Therefore, there is a low potential for mines or quarries within the Site, except for a small number of particular parcels within the Site where they might be present.

- 6.17. The assessment has also identified that small number of former farmsteads/homesteads or individual farm buildings are present within the Site, identified from 19th/20th century mapping. Notable examples are a homestead named Hen-hafod-Llin or 'Old Flax Summer Pasture', Maen Hir North; Individual farm buildings within parcels across Maen Hir Central; and two former agricultural buildings located within Maen Hir South B recorded on the 1841 Llandyfydog Parish Tithe Map, and a former homestead named Pig-y-rhos (Beak of Moorland). Therefore, there is a high potential for encountering former structures within all areas of the Site.
- 6.18. The assessment had identified that the proposed development will be located within the site of the Former Oil Depot within Maen Hir North. This site was developed in the 1970s and had a private siding off the line of the Amlwch with Gaerwen railway line. The depot went out of use by 1990. During the site visit, the concrete foundations of the depot structures and parts of the railway line were visible. These assets are considered have low significance in terms of being historic assets.

Agricultural remains

- 6.19. The assessment has identified that during the medieval, post-medieval and modern periods the Site formed the rural agricultural landscape around scattered farmsteads and nucleated settlement. A large number of former field boundaries, trackways and ponds are recorded across the Site and study area, as well as discrete areas of potential ridge and furrow surviving as aboveground earthworks noted on LiDAR Imagery within Maen Hir North, Central and South. These remains therefore indicate that there is a high potential for further similar agricultural remains within the Site.
- 6.20. Any surviving agricultural remains, such as ridge and furrow or former field boundaries, are considered to be remains of very limited significance, and are well

documented through historic aerial/satellite photography and LiDAR Imagery (and likely of insufficient interest to comprise 'historic assets'). Any remains associated with 20th century agricultural use (such as the identified modern cultivation marks) are of no archaeological interest and would not comprise 'historic assets'.

Historic landscape

- 6.21. The boundaries of the fields that form the Site are likely to date to the post-medieval period and some, but not all, are depicted on the 1840s Tithe Maps. Hedgerows along historic boundaries meet the criteria of 'important' historic hedgerows as laid out in the 1997 Hedgerow Regulations criteria for Archaeology and History (see Annex 1). These hedgerow boundaries that form the Site will be retained as part of the proposed development. 'Important' hedgerows are normally considered to comprise non-designated historic assets of low heritage value. It is normally desirable to emphasise retention of such hedgerows in new development where possible; although removal of elements to facilitate suitable place-making, circulation and access is normally acceptable in heritage terms (without necessarily leading to harm to intelligibility of the hedgerow pattern of the local area).
- 6.22. It is expected that the proposed development would be contained within the existing field boundaries and would therefore have no impact on the historical integrity of historically important hedgerows of the Site. Given that these remains are of overall low heritage significance, their removal/loss would not be considered a significant archaeological impact.

Summary

- 6.23. Archaeological remains comprise an important, non-renewable and finite resource, and the construction impacts associated with the proposed development would have the potential to result in permanent and irreversible loss of, or damage to, any potential buried archaeological remains which may be present within the Site. Any buried archaeological remains within the Site are unlikely to represent an absolute constraint on development, although the known and potential remains would require consideration as part of the planning process.
- 6.24. Construction activities relating to the installation of PV arrays typically result in relatively very minor below-ground disturbance (compared to other forms of development such as residential development or minerals extraction which require foundations and extensive landscaping). The other elements of the Project that have

the potential to result in damage to or loss of buried archaeological remains include: excavation of the trenches for low voltage cabling, excavation of parcel substations (and foundations of any other equipment structures), the Project Substation and BESS, equipment, access tracks, drainage, construction compounds, grid connection cable trenches, Highway Works. Appropriate mitigation measures will be implemented, informed by further surveys and assessment, to ensure any such impacts are reduced, removed or offset.

- 6.25. As the nature, extent and composition of any archaeological remains within the Site are currently unknown, further research, geophysical survey and non-intrusive surveys will be carried out and will inform any further work (such as trial trenching). Such investigations will ensure that any sensitive archaeological remains can be identified, assessed and appropriately safeguarded, with a range of industry standard mitigation options available (preservation in situ, through exclusion or no-dig solutions, or preservation by record, through appropriate investigations).

Non-physical effects

- 6.26. A total of 193 Listed Buildings, 41 Scheduled Monuments, four Conservation Areas and one Registered Historic Landscape (RHL) are located within the 5km study area, and a Stage 1 assessment was carried out for all those historic assets. For this draft DBA for PEIR, a number of Listed Buildings, Scheduled Monuments and RHL that could be sensitive to the Project underwent a Stage 2 detailed settings assessment which is presented in this report.
- 6.27. For a select number of designated historic assets, potential mitigation measures/mitigation by design were discussed, to help illustrate what measures can be put in place to limit or avoid non-physical impacts to their significance by the proposed development. The results of this preliminary report, and further assessment, will inform development of the plans for the proposed development. If suitable mitigation measures are put in place, it is anticipated that harm to designated historic assets from the proposed development can be removed altogether or minimised.

7. REFERENCES

- Allen, J. 1896 Notes on "Late-Celtic" Art, In, *Archaeologia Cambrensis*, Vol. XIII
- Amlwch History 2023 *The Industrial History of Amlwch* - <https://amlwchhistory.co.uk/>
(accessed 23/10/2023)
- Anglesey History 2023 *Anglesey Through the Ages* - <https://www.anglesey-history.co.uk/anghist.html> (accessed 20/10/2023)
- Anglesey Info 2023 *Llyn Alaw on Anglesey* - <https://www.anglesey.info/llyn-alaw/> (accessed 25/10/2023)
- Archaeology Wales 2016 *Proposed Wind Turbine at Nant-y-fran, Cemaes, Isle of Anglesey: Cultural Heritage Impact Assessment*
- Archaeology Wales 2022 *Cae Mawr, Llanerchymedd, Anglesey: Strip, Map Excavate*
- Barfield, L. and Hodder, M. 1987 Burnt Mounds as Saunas and the Prehistory of Bating, *Antiquity*, 61, pp. 370-379
- Baring-Gould 1907 *The Lives of the British Saints: The Saints of Wales and Cornwall and such Irish Saints as have dedications in Britain*
- Baynes, N. 1920 Old Chapels & Monasteries Destroyed in Anglesey. In, *Transactions of the Anglesey Antiquarian Society*
- Boyle, S. 1988 *Gwynedd Archaeological Trust Site PRN 3054*
- British Geological Survey 2024 *Geology of Britain Viewer* <https://geologyviewer.bgs.ac.uk/>
(accessed 01/07/2024)
- British Geological Survey ND *The BGS Lexicon of Named Rock Units* - <https://webapps.bgs.ac.uk/lexicon/lexicon.cfm?pub=TILL> (accessed 11/07/2024)
- British Mineralogy 2023 *Parys Mountain, Anglesey, Wales* - https://britishmineralogy.com/wordpress/?page_id=8 (accessed 23/10/2023)
- Burrow, S. 2010 *A Research Framework for the Archaeology of Wales: Neolithic and Bronze Age*
- Cadw CCW & ICOMOS UK 1998 *The Register of Landscapes, Parks and Gardens of Special Historic Interest in Wales. Part 2.1: Register of Landscapes of Outstanding Historic Interest in Wales, Cadw: Cardiff: 70-72*

-
- Cadw 1998 *The Register of Landscapes, Parks and Gardens of Special Historic Interest in Wales. Part 2.1: Register of Landscapes of Outstanding Historic Interest in Wales*, Cadw: Cardiff: 70-72
- Cadw 2011 *Conservation Principles for the Sustainable Management of the Historic Environment in Wales*
- Cadw 2017a *Setting of Historic Assets in Wales*
- Cadw 2017b *Heritage Impact Assessment in Wales*
- Cadw ND *Scheduled Monuments* [Search Cadw records | Cadw \(gov.wales\)](#) (accessed 29/09/2023)
- Carr, A. 1982 *Medieval Anglesey (Llangefni)*
- Chartered Institute for Archaeologists 2020 *Standard and Guidance for Historic Environment Desk-Based Assessment*
- Cotswold Archaeology 2015 *The North Anglesey Solar Project, Llanbadrig, Cemaes, Anglesey: Heritage Assessment*
- Cotswold Archaeology 2023 *Maen Hir Solar Farm, Anglesey. Written Scheme of Investigation for a Historic Environment Desk-Based Assessment*
- C.R. Archaeology 2016 *Results of Archaeological Works at Proposed New Dairy Complex, Plas Llanfihangel, Capel Coch, Llangefni*
- Cruse, G. 2018 *North Wales Connection Project Wylfa to Pentir, Anglesey and Gwynedd. Archive Report: Archaeological Trenched Evaluation*
- DataMapWales 2017 *Landmap Historic Landscape -* https://datamap.gov.wales/layers/inspire-nrw:NRW_LANDMAP_Historic_Landscape (accessed 26/10/2023)
- Davidson, A. and Flook, H. 1994 *Proposed Wind Farm, Llyn Alaw, Anglesey*
- Davidson, A. 2002 *The Medieval Mills of Anglesey: Archaeological Threat Related Assessment*
- Davidson, A. 2004 *Deserted Ecclesiastical Sites in North-West Wales: A Threat Related Archaeological Assessment*
- Davies, J. 2003 *A Research Framework for the Archaeology of Wales Northwest Wales – Roman*
- Davies, D. 2016 *Welsh Place Names and Their Meaning*

-
- Department of Energy and Climate Change 2023 *Overarching National Policy Statement for Energy (EN-1)* - <https://assets.publishing.service.gov.uk/media/65bbfdbc709fe1000f637052/overarching-nps-for-energy-en1.pdf> (accessed 21/05/2024)
- Dyfed Archaeology 2023a *Mesolithic Wales* - <https://dyfedarchaeology.org.uk/lostlandscapes/mesolithic.html> (accessed 16/10/2023)
- Dyfed Archaeology 2023b *Trwyn Du, Anglesey* - <https://dyfedarchaeology.org.uk/lostlandscapes/trwyndu.html> (accessed 16/10/2023)
- Dyfed Archaeology 2023c *Palaeolithic Wales* - <https://dyfedarchaeology.org.uk/lostlandscapes/palaeolithic.html> (accessed 16/10/2023)
- Ferreira, C. 2023 *Recording Historic Farmsteads: North Anglesey and West Meirionnydd 2022-2023*
- Geary, K. 1996 *Llanbabo Church, Anglesey: Watching Brief*
- GSB Prospection Ltd 2006 *Geophysical Survey Report 2006/59 Amlwch, Anglesey*
- Gwyn, D. and Davidson, A. 2009 *Historic Landscape Characterisation: Amlwch, GAT report no. 782*
- Gwynedd Archaeological Trust 1994 *Rhyd-y-Groes, Rhosgoch, Ynys Mon: Archaeological Assessment*
- Gwynedd Archaeological Trust 2011 *Evaluation Excavation at a Prehistoric Hilltop Enclosure at Carrog, Llanbadrig, Anglesey*
- Gwynedd Archaeological Trust 2013 *Early Neolithic Settlement and an Early Iron Age Hilltop Enclosure at Carrog, Llanbadrig, Anglesey*
- Gwynedd Archaeological Trust 2020 *Parc Cybi, Holyhead. Final Report on Excavations: Volume 1*
- Gwynedd Archaeological Trust 2023a *Historic Landscape Characterisation: Amlwch – Area 9 Mines PRN 28649* - [Gwynedd Archaeological Trust - Ymddiriedolaeth Archaeolegol Gwynedd \(heneb.co.uk\)](https://www.heneb.co.uk) (accessed 25/10/2023)
- Gwynedd Archaeological Trust 2023b *Historic Landscape Characterisation – Amlwch Historical Themes* - <http://www.heneb.co.uk/hlc/amlwchthemes.html#:~:text=The%20Amlwch%20and%20Mynydd%20Parys,over%203km%20to%20the%20south> (accessed 08/01/2024)

Hayward, W. 2016 *These houses helped shape Wales' history but are now crumbling* - <https://www.walesonline.co.uk/news/wales-news/houses-helped-shape-wales-history-12293587> (accessed 25/10/2023)

Historic England 2010 *The Light Fantastic: Using Airborne LiDAR in Archaeological Survey*

Historic England 2018 *Field Systems: Introduction to Heritage Assets*

Hodder, M. 1990: Burnt Mounds in the English West Midlands, in V. Buckley (ed.) *Burnt Offerings. International Contributions to Burnt Mound Archaeology*, pp. 105-111, Wordwell Ltd-Academic Publications: Dublin

Hodder, M. 2002 *Burnt Mounds and Beyond: the Later Prehistory of Birmingham and the Black Country*. West Midlands Regional Research Framework for Archaeology, Seminar 2

Hopewell, D. 2005 *Roman Roads in North West Wales Parts I and II*

Hopewell, D. and Edwards, N. 2017 Early Medieval Settlement and Field Systems at Rhuddgaer, Anglesey. In, *Archaeologia Cambrensis* - https://research.bangor.ac.uk/portal/files/18543967/Hopewell_and_Edwards_RhuddgaerFINALTEXT.pdf (accessed 21/05/2024)

Hopewell, D., Smith, G., and Driver, T. 2007 *Defended Enclosures Survey: Threat-Related Assessment of Cropmarks on the Llyn Peninsula and Anglesey*

IFA Wales/Cymru 2008 A Research Framework for the Archaeology of North West Wales - <https://www.archaeoleg.org.uk/areanorthwest.html> (accessed 27/10/2023)

Isle of Anglesey County Council 2011 *The Isle of Anglesey – Anglesey Landscape Strategy*

Isle of Anglesey County Council and Gwynedd Council 2017 *Anglesey and Gwynedd Joint Local Development Plan 2011 – 2026*

IEMA, IHBC, ClfA 2021 *Principles of Cultural Heritage Impact Assessment in the UK*

Jones, B., 2021 *Recording Traditional Farm Buildings and Historic Farmsteads: Carneddau 2019-20*

Kelly, R.S. 1988 Two late prehistoric circular enclosures near Harlech, Gwynedd, *Proc. of the Prehist. Soc.*, 54, 101-51

Kenny, J. 2011 *Burnt Mounds in North-West Wales*

Kenny, J. 2020 *Excavation on Pen y Foel, Llannerch y Medd Site Visit*

Kernon Countryside Consultants Limited 2023 *Briefing Note: Agriculture on Ynys Mon*

-
- Klemen Zakšek, Krištof Oštir and Žiga Kokalj 2011 *Sky-View Factor as a Relief Visualization Technique. Remote Sensing* 3(2): 398-415
- Kokalj, Žiga and Maja Somrak 2019 *Why not a single image? Combining Visualizations to Facilitate Fieldwork and On-Screen Mapping. Remote Sensing* 11 (7): 747
- Kokalj, Žiga and Ralf Hesse 2017 *Airborne Laser Scanning Raster Visualisation: A guide to Good Practice*
- Laurie, T.C. 2003 Researching the Prehistory of Wensleydale, Swaledale and Teesdale. In, T.G. Manby, S. Moorhouse and P. Ottaway (eds.) *The Archaeology of Yorkshire: An assessment at the beginning of the 21st century*. Leeds: Yorkshire Archaeological Society. pp 223-254
- Lloyd, J. 1959 *Dictionary of Welsh Biography*
- Loktionov, A. 2013 Something for everyone: a ritualistic interpretation of Bronze Age burnt mounds from an ethnographic perspective. In, *The Post Hole, Issue 26* - <https://www.theposthole.org/read/article/187> (accessed 19/10/2023)
- Longley, D. 2003 *A Research Framework for the Archaeology of Wales Northwest Wales – Later Prehistoric*
- Longueville Jones, H. 1855 List of Early British Remains in Wales No. III. In, *Archaeologia Cambrensis, Vol.1*, p.18-27
- Lynch, F. 2000 The Later Neolithic and Bronze Age. In: Lynch, F., Aldhouse-Green, S. and J.L. Davies (eds.) *Prehistoric Wales*, Stroud. 79-136
- Lynch, F. 2003 *A Research Framework for the Archaeology of Wales Northwest Wales – Early Prehistoric*
- Ó Drisceoil, D.A. 1988. Burnt Mounds: Cooking or Bathing?, *Antiquity*, 62:237, pp/ 671-680
- Owen, A. 2018 *Mesolithic and Bronze Age Coedana. HER Library Record No. 2463*
- Owen, A. and Wood, M. 2020a *St. Mary's Church and 'Smithfield' / 'Cae Llan' Survey Area; Llannerch-ymedd: Desk Based Assessment*
- Owen, A. and Wood, M. 2020b *Glan Gors & Cae Cyrch Gwyddel: Llangwyllog: Part 1: Desk Based Assessment of Potential Features near 'Glan Gors' Farm and 'Cae Cyrch Gwyddel', Llangwyllog, Using Lidar Imagery, Drone Photography, Site Visits, Field Walking and Metal Detecting Use*

-
- Owen, A. 2023 '*Cynhanes Cudd Môn*' - a multimodal investigation of previously unrecorded sites of potential archaeological interest in Central Anglesey, North Wales
- Parry, I., Smith, G., and Hopewell, D. 2011 *Cadw Scheduling Enhancement: Holy Wells*
- Pearson, A. 1995 *Gwynedd Archaeological Trust Site Visit PRN 5634*
- Pegasus Group 2021 *Alaw Mon Solar Farm, Anglesey: Heritage Statement*
- Planning (Listed Buildings and Conservation Areas) Act 1990 Act of UK Parliament)
- Pryor, F. 2011 *The Making of the British Landscape: How We Have Transformed the Land, from Prehistory to Today*
- Ripper, S. 2002-2003.: Bodies, Burnt Mounds and Bridges, *University of Leicester Archaeological Services Review 2002-2993*
- Roman Britain ND *Farming in Celtic Britain* - <https://www.roman-britain.co.uk/the-celts-and-celtic-life/farming-in-celtic-britain/> (accessed 21/05/2024)
- Smith, G. 2003 *Prehistoric Funerary and Ritual Monument Survey: West Gwynedd and Anglesey*
- Smith, G. and Hopewell, D. 2010 *Anglesey Coastal AONB: The Ancient Landscape of Mon Archaeology Survey Project*
- Sykes, C., Goulding, R., and Trace, A. 2017 *North Wales Connection Project Anglesey and Gwynedd Wales: Geophysical Survey*
- The Gwynedd Archaeological Trust Historic Environment Record. *HER Enquiry Reference Number: GATHER1914.*
- The Historic of Parliament 2023 <https://www.historyofparliamentonline.org/> (accessed 26/10/2023)
- The National Library of Wales 2023 *Welsh Tithe Maps* - <https://places.library.wales/> (accessed 23/10/2023)
- The Peerage 2023 <https://www.thepeerage.com/p2683.htm#i26828> (accessed 26/10/2023)
- The Welsh Archaeological Trusts 2022 *Guidance for the Submission of Data to the Welsh Historic Environment Records (HERs)*
- Thomas, C. 1968 Thirteenth Century Farm Economies in North Wales. In, *The Agricultural History Review, Volume 16*
- Waddington, K. 2010 *Early Celtic Societies in North Wales*

Waddington, K. 2013 *The Settlements of Northwest Wales: From the Late Bronze Age to the Early Medieval Period*

Welsh Government 2017 *Technical Advice Note 24: The Historic Environment (TAN24)*

Welsh Government 2016 *Historic Environment (Wales) Act 2016*

Welsh Government 2024 *Planning Policy Wales Edition 12*

Wessex Archaeology 2007 *Rhyd y Groes Wind Farm, Werthyr, Near Amlwch, Anglesey, North Wales*

Wessex Archaeology 2013a *Wind Turbine Site 10505 Rhosbeirio, Anglesey: Detailed Gradiometer Survey Report*

Wessex Archaeology 2013b *Wind Turbine Site 10505 Rhosbeirio, Anglesey: Archaeological Trial Trenching Report*

Wessex Archaeology 2014 *Rhyd-y-Groes Repower, Anglesey: Cultural Heritage Assessment*

Wessex Archaeology 2015a *Land at Rhyd-y-Groes Wind Farm, Isle of Anglesey: Detailed Gradiometer Survey Report*

Wessex Archaeology 2015b *Land at Rhyd-y-Groes Wind Farm, Isle of Anglesey: Archaeological Evaluation Report*

Wessex Archaeology 2018 *Wylfa Portable Water Pipeline Route, Anglesey Phase 1 Trenching. Archaeological Evaluation*

White, R. 1977 *Rhosgoch to Stanlow Shell Oil Pipeline*

Williams, W. W. 1876 *Mona Antiqua - Dinas and Morwydd Ymrawyr, Archaeologia Cambrensis*, P105

Nash Williams, V. 1950 *Early Christian Monument of Wales*

Wymer, J. 1999 *The Lower Palaeolithic Occupation of Britain. Wessex Archaeology & English Heritage*

Cartographic sources (viewed at [The National Library of Wales](#), [Envirocheck](#) and [Old Maps Online](#))

1818 Robert Dawson's map of North Anglesey

1840 Llandyfrydog and Llan'l Tre'rbeirdd Parish Tithe Map

1840 Rhosbeiro Parish Tithe Map

1841	Llanbabo Parish Tithe Map
1841	Amlwch Parish Tithe Map
1841	Coedana Parish Tithe Map
1841	Llangwyllog Parish Tithe Map
1841	Llanbadrig Parish Tithe Map
1888-1913	Ordnance Survey 1:10,560
1889	Ordnance Survey 1:2,500
1889	Ordnance Survey 1:10,560
1899	Ordnance Survey 1:10,560
1900	Ordnance Survey 1:2,500
1919-1947	Ordnance Survey 1:10,560
1924	Ordnance Survey 1:2,500
1926	Ordnance Survey 1:10,560
1949	Ordnance Survey 1:10,560
1955-1961	Ordnance Survey 1:63,360
1959	Ordnance Survey 1:10,560
1971-1974	Ordnance Survey 1:2,500
1973-1975	Ordnance Survey 1:2,500
1974	Ordnance Survey 1:2,500
1976	Ordnance Survey 1:10,560
1979	Ordnance Survey 1:2,500
1990-1992	Ordnance Survey 1:10,000
1993-1995	Ordnance Survey 1:2,500
1995	Ordnance Survey 1:2,500

Aerial photographs (provided by Google Earth and Central Register of Aerial Photographs for Wales)

Aug 1945 106G/UK_655 3283

Aug 1945 106G/UK_655 3285

Aug 1945 106G/UK_655 3287
Aug 1945 106G/UK_655 3289
Aug 1945 106G/UK_655 3194
Aug 1945 106G/UK_655 3196
Aug 1945 106G/UK_655 4201
Aug 1945 106G/UK_655 4203
Aug 1945 106G/UK_655 4296
Aug 1945 106G/UK_655 4302
Aug 1945 106G/UK_655 4326
May 1948 540_39 130
May 1948 540_39 132
May 1960 58RAF3579 F21 74
May 1960 58RAF3579 F21 99
May 1960 58RAF3579 F22 99
June 1969 RAF543_4748 146
June 1969 RAF543_4748 14625
May 1971 OS 71_163 251
May 1971 OS 71_163 290
July 1971 MAL 102_71 071
July 1971 MAL 102_71 073
July 1971 MAL 102_71 075
July 1971 MAL 102_71 087
July 1971 MAL 102_71 089
July 1971 MAL 102_71 091
July 1971 MAL 102_71 093
July 1971 MAL 102_71 111
July 1971 MAL 102_71 113
July 1971 MAL 102_71 115
Aug 1982 RC8-ET 55
Aug 1982 RC8-ET 57
Aug 1982 RC8-ET 89
Aug 1982 RC8-ET 118
Aug 1982 RC8-ET 234
Aug 1982 RC8-ET 236
Aug 1982 RC8-ET 238
May 1985 8512 116

May 1985 8512 118
May 1985 8512 120
May 1985 8512 165
May 1985 8512 169
May 1985 8512 171
May 1985 8512 173
June 1992 ADAS 555 165
June 1992 ADAS 555 167
June 1992 ADAS 555 228
June 1992 ADAS 555 230
June 1992 ADAS 555 232
2006 -2023 Google Earth

ANNEX 1: HERITAGE STATUTE POLICY & GUIDANCE

Heritage Statute: Historic Environment (Wales) Act (2016)

The Historic Environment (Wales) Act was passed by the National Assembly for Wales in February 2016 and became law after receiving Royal Assent in March 2016. It amends the two pieces of UK legislation - the Ancient Monuments and Archaeological Areas Act 1979 and the Planning (Listed Buildings and Conservation Areas) Act 1990 – that currently provide the framework for the protection and management of the historic environment in Wales.

The Historic Environment (Wales) Act 2016 has three main aims:

- To give more effective protection to Listed Buildings and Scheduled Monuments;
- To improve the sustainable management of the historic environment; and
- To introduce greater transparency and accountability into decisions taken on the historic environment.

The amendments to the Planning Act 1990 include an extension to the definition of a Scheduled Monument, the introduction of enforcement orders to stop unauthorised works to Scheduled Monuments or Listed Buildings, and the formulation of a comprehensive register of parks and gardens of historic interest in Wales and a statutory list of historic place names.

Heritage Statute: Scheduled Monuments

Scheduled Monuments are subject to the provisions of the Ancient Monuments and Archaeological Areas Act 1979. The Act sets out the controls of works affecting Scheduled Monuments and other related matters. Contrary to the requirements of the Planning Act 1990 regarding Listed buildings, the 1979 Act does not include provision for the ‘setting’ of Scheduled Monuments.

Heritage Statute: Listed Buildings

Listed buildings are buildings of ‘special architectural or historic interest’ and are subject to the provisions of the Planning (Listed Buildings and Conservation Areas) Act 1990 (‘the Act’). Under Section 7 of the Act ‘no person shall execute or cause to be executed any works for the demolition of a listed building or for its alteration or extension in any manner which would affect its character as a building of special architectural or historic interest, unless the works are authorised.’ Such works are authorised under Listed Building Consent. Under Section 66 of the Act ‘In considering whether to grant planning permission for development which affects a listed building or its setting, the local planning authority or, as the case may be, the Secretary of State shall have special regard to the desirability of preserving the building or its setting or any feature of special architectural or historic interest which it possesses’.

Note on the extent of a Listed Building

Under Section 1(5) of the Act, a structure may be deemed part of a Listed Building if it is:

- (a) fixed to the building, or
- (b) within the curtilage of the building, which, although not fixed to the building, forms part of the land and has done so since before 1st July 1948

The inclusion of a structure deemed to be within the ‘curtilage’ of a building thus means that it is subject to the same statutory controls as the principal Listed Building. Inclusion within this duty is not, however, an automatic indicator of ‘heritage significance’ both as defined within PPW (2024) and TAN 24 (2017) (see Section 2 above). In such cases, the significance of the

structure needs to be assessed both in its own right and in the contribution it makes to the significance and character of the principal Listed Building. The practical effect of the inclusion in the listing of ancillary structures is limited by the requirement that Listed Building Consent is only needed for works to the ‘Listed Building’ (to include the building in the list and all the ancillary items) where they affect the special character of the Listed building as a whole.

Planning Policy Wales (Edition 12) February 2024 ***Section 6: The Historic Environment***

The historic environment comprises all the surviving physical elements of previous human activity and illustrates how past generations have shaped the world around us. It is central to Wales’s culture and its character, whilst contributing to our sense of place and identity. It enhances our quality of life, adds to regional and local distinctiveness and is an important economic and social asset.

The historic environment is made up of individual historic features which are collectively known as historic assets. Examples of what can constitute a historic asset include:

- Listed buildings;
- Conservation areas;
- Historic assets of special local interest;
- Historic parks and gardens;
- Townscapes;
- Historic Landscapes;
- World Heritage Sites; and
- Archaeological remains (including scheduled monuments).

The ways in which historic assets are identified can vary. The most important historic assets often have statutory protection or are included in formal registers which identify them as being of special historic interest. Other assets yet to be formally identified could include buried archaeological remains.

Conserving and Enhancing the Historic Environment and its Assets

The Ancient Monuments and Archaeological Areas Act 1979, Planning (Listed Buildings and Conservation Areas) Act 1990 and Historic Environment (Wales) Act 2016 provide the legislative framework for the protection and sustainable management of the historic environment in Wales. PPW provides the national planning policy framework for the consideration of the historic environment, and this is supplemented by guidance contained in Technical Advice Note 24: The Historic Environment and Cadw associated best practice guidance on the historic environment.

The planning system must take into account the Welsh Government’s objectives to protect, conserve, promote and enhance the historic environment as a resource for the general well-being of present and future generations. The historic environment is a finite, non-renewable and shared resource, and a vital and integral part of the historical and cultural identity of Wales. It contributes to economic vitality and culture, civic pride, local distinctiveness, and the quality of Welsh life. The historic environment can only be maintained as a resource for future generations if the individual historic assets are protected and conserved. Cadw’s published Conservation Principles highlights the need to base decisions on an understanding of the impact a proposal may have on the significance of a historic asset.

The Welsh Government’s specific objectives for the historic environment seek to:

- protect the Outstanding Universal Value of the World Heritage Sites;

-
- conserve archaeological remains, both for their own sake and for their role in education, leisure and the economy;
 - safeguard the character of historic buildings and manage change so that their special architectural and historic interest is preserved;
 - preserve or enhance the character or appearance of conservation areas, whilst the same time helping them remain vibrant and prosperous;
 - preserve the special interest of sites on the register of historic parks and gardens; and
 - protect areas on the register of historic landscapes in Wales.

It is important that the planning system looks to protect, conserve, and enhance the significance of historic assets. This will include consideration of the setting of a historic asset which might extend beyond its curtilage. Any change that impacts on a historic asset or its setting should be managed in a sensitive and sustainable way.

It is the responsibility of all those with an interest in the planning system, including planning authorities, applicants, developers, and communities, to appropriately care for the historic environment in their area. The protection, conservation and enhancement of historic assets is most effective when it is considered at the earliest stage of plan preparation or when designing proposals new proposals.

Any decisions made through the planning system must fully consider the impact on the historic environment and on the significance and heritage values of individual historic assets and their contribution to the character of place.

Listed Buildings

There should be a general presumption in favour of the preservation or enhancement of a listed building and its setting, which might extend beyond its curtilage. For any development proposal affecting a listed building or its setting, the primary material consideration is the statutory requirement to have special regard to the desirability of preserving the building, its setting, or any features of special architectural or historic interest which it possesses.

For listed buildings, the aim should be to find the best way to protect and enhance their special qualities, retaining them in sustainable use. The continuation or reinstatement of the original use should generally be the first option, but not all original uses will now be viable or appropriate. The application of planning and listed building controls should recognise the need for flexibility where new uses have to be considered in order to secure a building's survival or provide it with a sound economic future.

The demolition of any listed building should be considered as exceptional and require the strongest justification.

Applicants for listed building consent must be able to justify their proposals, show why the alteration or demolition of a listed building is desirable or necessary and consider the impact of any change upon its significance. This must be included in a heritage impact statement, which will be proportionate both to the significance of the building and to the degree of change proposed.

Archaeological Remains

The planning system recognises the need to conserve archaeological remains. The conservation of archaeological remains and their settings is a material consideration in determining planning applications, whether those remains are a scheduled monument or not.

Where nationally important archaeological remains and their settings are likely to be affected by proposed development, there should be a presumption in favour of their physical protection *in situ*. It will only be in exceptional circumstances that planning permission will be granted if development would result in an adverse impact on a scheduled monument (or an archaeological site shown to be of national importance) or has a demonstrably and unacceptably damaging effect upon its setting.

In cases involving less significant archaeological remains, planning authorities will need to weigh the relative importance of the archaeological remains and their settings against other factors, including the need for the proposed development.

Where archaeological remains are known to exist or there is a potential for them to survive, an application should be accompanied by sufficient information, through desk-based assessment and/or field evaluation, to allow a full understanding of the impact of the proposal on the significance of the remains. The needs of archaeology and development may be reconciled, and potential conflict very much reduced, through early discussion and assessment.

If the planning authority is minded to approve an application and where archaeological remains are affected by proposals that alter or destroy them, the planning authority must be satisfied that the developer has secured appropriate and satisfactory provision for their recording and investigation, followed by the analysis and publication of the results and the deposition of the resulting archive in an approved repository. On occasions, unforeseen archaeological remains may still be discovered during the course of a development. A written scheme of investigation should consider how to react to such circumstances, or it can be covered through an appropriate condition for a watching brief. Where remains discovered are deemed to be of national importance, the Welsh Ministers have the power to schedule the site and, in such circumstances, scheduled monument consent must be required before works can continue.

Enabling Development

Enabling development is development which can deliver substantial heritage benefit but would usually be contrary to other objectives of national or local planning policy.

Enabling development may be appropriate if the public benefit of rescuing, enhancing, or even endowing an important historic asset decisively outweighs the harm to other material interests. It must always be in proportion to the public benefit it offers.

When considering a scheme of enabling development, planning permission should be granted only where all of the following can be applied:

- where the impact of the development was precisely defined in the application at the outset, and normally through the granting of full, rather than outline, planning permission;
- where the achievement of the heritage objective is securely and enforceably linked to the enabling development;
- where the place concerned is repaired to an agreed standard, or the funds to do so are made available, as early as possible in the course of the enabling development, ideally at the outset and certainly before completion or occupation of the enabling development;
- where the planning authority closely monitors implementation, if necessary acting promptly to ensure that obligations are fulfilled; and

-
- the enabling development does not give rise to significant risks, for example residential development in the floodplain or significantly impact on air quality or soundscape.

Local Development Plan

POLICY PS 20: PRESERVING AND WHERE APPROPRIATE ENHANCING HERITAGE ASSETS

In seeking to support the wider economic and social needs of the Plan area, the Local Planning Authorities will preserve and where appropriate, enhance its unique heritage assets.

Proposals that will preserve and where appropriate enhance the following heritage assets, their setting and significant views into and out of the building/area will be granted:

1. Scheduled Ancient Monuments and other areas of archaeological importance (in line with Policy AT 4);
2. Listed Buildings and their curtilages;
3. Conservation Areas (in line with Policy AT 1);
4. Beaumaris Castle and Caernarfon Castle and Town Walls World Heritage Sites (in line with Policy AT 1);
5. Candidate World Heritage Sites;
6. Registered Historic Landscapes, Parks and Gardens (in line with Policy AT 1); and
7. Buildings of architectural/ historic/ cultural merit that are not designated or protected (in line with Policy AT 3).

POLICY AT 1: CONSERVATION AREAS, WORLD HERITAGE SITES AND REGISTERED HISTORIC LANDSCAPES, PARKS AND GARDENS

Proposals within or affecting the setting and/ or significant views into and out of Conservation Areas, World Heritage Sites and Registered Historic Landscapes, Parks and Gardens shown on the Constraints Map must, where appropriate, have regard to:

1. Adopted Conservation Area Character Appraisals, Conservation Area Plans and Delivery Strategies;
2. World Heritage Site Management Plans; and
3. The Register of Landscape, Parks and Gardens of Special Historic Interest in Wales.

Proposals should be supported by a Heritage Impact Assessment, where appropriate.

POLICY AT 2: ENABLING DEVELOPMENT

Enabling development which aims to secure the preservation and/or alternative use of a listed building or a building that makes a significant positive contribution to the character of a conservation area or a Registered Historic Landscape, Park and Garden will be granted provided all the following criteria can be met:

1. It will not materially harm the heritage values of the heritage asset or its setting;

-
2. It avoids detrimental fragmentation of management of the historic asset;
 3. It will secure the long-term future of the heritage asset and, where applicable, its continued use for a sympathetic purpose;
 4. It is necessary to resolve problems arising from the inherent needs of the heritage asset, rather than the circumstances of the present owner, or the purchase price paid;
 5. Sufficient subsidy is not available from any other source; and
 6. It is demonstrated that the amount of enabling development proposed is the minimum necessary to secure the future of the heritage asset, and that it causes minimal harm to other public interests.

POLICY AT 3: LOCALLY OR REGIONALLY SIGNIFICANT NON-DESIGNATED HERITAGE ASSETS

Proposals will be required to conserve and seek opportunities to enhance buildings, structures and areas of locally or regionally significant non-designated heritage assets, which create a sense of local character, identity and variation across the Plan area, by:

1. The sympathetic re-use of redundant and under-used historic buildings and areas that are consistent with their conservation;
2. Ensuring that all development within the Plan area's historic public realm, including transport and infrastructure work, is sympathetic to the historic environment; and
3. Appropriate siting, massing, form, height, scale, detail and use of local materials

POLICY AT 4: PROTECTION OF NON-DESIGNATED ARCHAEOLOGICAL SITES AND THEIR SETTING

Proposals which may have a significant adverse impact on sites that are of potential national archaeological importance and their setting, or are of acknowledged local heritage importance, including sites of industrial archaeology that are not scheduled and their settings will:

1. Be assessed in terms of the intrinsic importance of the 'site' and the potential extent of harm; and
2. Require, where appropriate, either an archaeological assessment and/ or field evaluation by an archaeological body or a professionally qualified archaeologist in order to determine the archaeological impact of the proposed development before the Planning Authority determines the application.

A proposal which affects locally important archaeological remains will only be granted if the need for the development overrides the significance of the archaeological remains.

Where proposals are acceptable, a condition will be attached to the permission stating that no development should take place until an agreed programme of archaeological work has taken place.

Cadw, Conservation Principles (2011)

Heritage significance

The significance of historic assets in Wales is provided within 'Conservation Principles: Policies and Guidance for the sustainable Management of the Historic Environment in Wales' (Cadw 2011). This approach considers heritage significance to derive from a combination of discrete heritage values:

Evidential value derives from those elements of a historic asset that can provide evidence about past human activity, including its physical remains or historic fabric.

Historical value may derive from aspects of past ways of life, or association with notable families, persons, events, or movements – it embodies the connection between past events and society with the present.

Aesthetic value derives from the sensory and intellectual stimulation drawn from a historic asset. It may include its physical form, and how it lies within its setting. It may also be the result of design, or an unplanned outcome of a process of events.

Communal value derives from the meanings that a historic asset has for the people who relate to it, or for whom it figures in their collective experience or memory. It may be commemorative or symbolic and relate to issues of identity or collective memory.

Cadw, Setting of Historic Assets in Wales

Staged settings assessment

This section outlines the general principles that both assessors and decision makers should consider when assessing the impact of a proposed change or development within the setting of historic assets. Essentially, there are four stages.

Stage 1: Identify the historic assets that might be affected by a proposed change or development.

Stage 2: Define and analyse the settings to understand how they contribute to the significance of the historic assets and, in particular, the ways in which the assets are understood, appreciated and experienced.

Stage 3: Evaluate the potential impact of a proposed change or development on that significance.

Stage 4: If necessary, consider options to mitigate or improve the potential impact of a proposed change or development on that significance.

Extract from the Hedgerow Regulations 1997

Extracted from Statutory Instruments 1997 No. 1160 The Hedgerows Regulations 1997, Schedule 1: Additional criteria for determining 'Important' hedgerows;

PART II: Archaeology and history

1. The hedgerow marks the boundary, or part of the boundary, of at least one historic parish or township; and for this purpose "historic" means existing before 1845.
2. The hedgerow incorporates an archaeological feature which is-

-
- a. included in the schedule of monuments compiled by the Secretary of State under section 1 (schedule of monuments) of the Ancient Monuments and Scheduled Areas Act 1979(g); or
 - b. recorded at the relevant date in a sites and Monuments Record.
3. The hedgerow-
 - a) is situated wholly or partly within an archaeological site included or recorded as mentioned in paragraph 2 or on land adjacent to and associated with such a site; and
 - b) is associated with any monument or feature on that site.
 4. The hedgerow-
 - a) marks the boundary of a pre-1600 AD estate or manor recorded at the relevant date in a sites and Monuments Record or on a document held at that date at a Record Office; or
 - b) is visibly related to any building or feature of such an estate or manor.
 5. The hedgerow-
 - a) is recorded in a document held at the relevant date at a Record Office as an integral part of a field system pre-dating the Inclosure acts (a); or
 - b) is part of, or visibly related to, any building or other feature associated with such a system, and that system-
 - i. is substantially complete; or
 - ii. is of a pattern which is recorded in a document prepared before the relevant date by a local planning authority, within the meaning of the 1990 Act(b), for the purposes of development control within the authority's area, as a key landscape characteristic.

ANNEX 2: GAZETTEER OF SELECTED RECORDED HISTORIC ASSETS

Selected Archaeological Remains

CA Ref.	Description	HER Ref.	Period	Easting	Northing
1	Three thin blade-like flint flakes. The largest is of yellow-brown flint and quite fresh. The other two are very thin and patinated to a reddish-brown colour. The artefact types are not diagnostic, but may be of early Mesolithic date.	7046	Mesolithic	239450	387290
2	Two Neolithic pits. The presence of middle Neolithic ceramic and burnt bone in heavily truncated features.	90576	Neolithic	241468	388412
3	A Neolithic pit	100529	Neolithic	242172	386090
4	A Neolithic pit	100528	Neolithic	242197	386110
5	A Langdale Stone Axe head, discovered at Llwydiarth Esgob, Llandyfydog, by a farmer while excavating a field ditch in 2004	67417	Neolithic	244115	384444
6	Neolithic field system characterised by a number of magnetic linears orientated on a broad north-south orientation A6. Within this busy landscape there are double-ditched trackways and boundaries and possible archaeological anomalies.	90497	Neolithic	246229	383085
7	Maen Chwyf - The position of two stones beneath the principal stone (12ft by 9ft) and the flat under-surface of the principal stone suggest that this is possibly a collapsed megalithic burial chamber.	2104	Neolithic	243260	385740
8	Aerial survey in 2006 by Pixaaerial showed three ring ditches, each c.20m in diameter, lying approximately in a line along the ridge. Ground survey shows that there were some earthworks remaining	34697	Bronze Age	237470	391850
9	Group of ring ditches and sub-circular enclosures identified by aerial photography. Possibly Late Bronze Age / Early Iron Age.	29454	Bronze Age	237270	392150
10	The cropmark is situated on the north-facing side of a low hill, not a typical situation for a round barrow.	5198	Bronze Age	238740	393480
11	A series of possible burnt mounds identified through geophysical survey.	90475	Bronze Age	238212	390798
12	A barrow at SH 38479125, 2m high and 25m in diameter, crossed by a modern wall.	3055	Bronze Age	238470	391250
13	Shortly before 1867 a stone cist was discovered in Rhosbeirio farmyard. It contained a skeleton and an A3 beaker	3058	Bronze Age	239190	391270
14	A ploughed down barrow was noted during field investigations. It is some 30m in diameter and 0.6m high.	3057	Bronze Age	239480	391090
15	Palstave found at Plas Bodewryd. In the Pitt Rivers Museum, Oxford.	3549	Bronze Age	240000	390700
16	Maen Hir, 700yds east-south-east of the Church of St. Mary, 13ft high, 6ft wide and 2ft thick. Some packing stones visible at base.	3543	Bronze Age	240624	390219
17	Possible burnt mound beside the stream or clearance material. (GAT 1994)	38101	Bronze Age	240520	392410
18	A possible cist grave sealed beneath the remnants of a cairn, excavated in Trench 3. The identification is tentative, and this may just	59773	Bronze Age	240880	392500

CA Ref.	Description	HER Ref.	Period	Easting	Northing
	be a stone-lined pit. No skeletal remains were recovered, or any datable.				
19	Tumulus - on a farm called Ty Newydd, 2 1/2 miles SW of Amlwch.	3555	Bronze Age	241254	391863
20	Two Bronze Age metal working sites were found at SH41879162 and SH41779162 the laying of the Shell pipeline. Both on a right-of-way and cut by a modern drain.	3559	Bronze Age	241870	391620
21		3565	Bronze Age	241770	391620
22	Urn Burials, Site of, Pen yr Orsedd, Rhosybol	2091	Bronze Age	241500	388400
23	A tumulus about 14m diameter and 60cm high is about 22m north-east of the published tumulus and about 13m from the gate in the north-east wall of the field.	2100	Bronze Age	243440	388950
24	Standing stone 400 yards west of farm of Boddeiniol. It stands in a ploughed field and is 8ft 6ins high, 6ft 7ins wide and 1ft 8ins thick.	2066	Bronze Age	236833	385738
25	Maen Hir, a small standing stone 1.6m high by 1.0m by 0.6m at its base.	2103	Bronze Age	242990	385850
26	A site first noticed as a slightly raised dark patch about one hundred and twenty meters in diameter covered with small, broken burnt stones, and was partly destroyed by the shell pipe line and the traffic involved in its construction, before excavation.	2120	Bronze Age	245440	385280
27	A probable bronze axe alleged to be a wedge of gold about 20 lbs in weight, found in the 18th century with other treasure near Y Carneddau, near Tre Wyn.	2123	Bronze Age	246000	385000
28	Scraper, Possible, Findspot, Llannerch-y-medd	100710	Bronze Age	246214	385063
29	Cairn, nearly a mile north-north-east of church, on top of a rocky eminence at 500 ft OD on Bodafon Mountain. A few stones remain in situ suggesting a curb of about 20ft diameter. Almost destroyed. (RCAHMW, 1937)	2205	Bronze Age	246680	384810
30	Llech Golman is a large rough stone 2.4m high, 1.7m wide and 1.1m thick	2201	Bronze Age	245192	383108
31	Scraper, Possible, Findspot, Llannerch-y-medd	81489	Bronze Age	247000	383000
32	Area of burnt material, comprising of organic material and heated stones, in a field north-west of Coedana Church. Site is located near water source - ditch running to south which is fed from a water source further North. Site disturbed during ploughing of field.	90027	Bronze Age	242806	382266
33	Middle Bronze Age spear or javelin found in valley below Ponciau Farm when the field was ploughed more deeply than usual. A fragment of wood from the socket has gone to the British Museum for dating.	7414	Bronze Age	247400	383600
34	A remarkable deposit of small relics of antiquity, chiefly of bronze, amber and jet was accidentally brought to light in the parish of Llangwyllog in Anglesey in 1854, when a tributary of the Afon Cefni was being widened about 400 yards above Llangwyllog	2144	Bronze Age	242800	379700
35	A ploughed down tumulus 250yds south-west of Rhosbeirio has a circumference of 75yds and is 2-2 1/2ft high (RCAHMW, 1937)	3068	Bronze Age	239060	391130

CA Ref.	Description	HER Ref.	Period	Easting	Northing
36	Tumuli which probably covered Bronze Age burials, but concerning which no certain evidence is available, were:- a tumulus by the roadside, 1/4m west of Llanerchymedd Church.	3589	Bronze Age	241300	384000
37	Bronze Age axe-hammer found in 1860 near Llwydiarth Esgob, Llandyfydog	3588	Bronze Age	243000	384000
38	There is also, in the adjoining fields, a large stone measuring about 10ft above ground. In the time of the former proprietor of the place, there was another stone of the same size, some distance from it, and a huge flat stone extending from one to the other	3541	Bronze Age	241524	392866
39	Possible standing stone; site identified by field name 'Cae'r Maen' (field of the stone), near Pen Cefn Fawr farm. Landowners have confirmed the existence of a standing stone in that field but have said it was destroyed before their time	90199	Bronze Age	242097	383158
40	Possible standing stone, identified on painting by Kyffin Williams of G'allt y Benddu windmill (Owen 2018, 12). Pointed stone visible in field opposite mill and outbuildings. No further information is known about this stone, assumed to have been destroyed	90198	Bronze Age	242443	383756
41	Maen Addwyn, erect stone 420 yards SSE of church, 10.5ft high, 3ft 4 inches average width and 2ft 10 inches thick. In good condition. (RCAHMW, 1937)	2199	Bronze Age	246050	383360
42	'...the remains of a circular earthwork of about 21m diameter with the remaining banks being about 0.5m high. It is unlikely to have been of a defensive nature and seems to have several features in common with an Irish rath'.	4387	Bronze Age	245850	384180
43	A Middle Bronze Age palstave found at Maen-Eryr	2193	Bronze Age	245000	380000
44	The stone is given three possible origins; firstly as a Bronze Age standing stone, secondly as a standing stone which may have seen later modifications for a later function, or thirdly as a post medieval gate post (Owen 2018).	70296	Bronze Age/Post-medieval	242689	383439
45	Fragment of slag, with burnt clay attached. Suggested by GS to be part of a bowl furnace. The finder reports an area of slag fragments by the lake	7049	Iron Age	239110	387120
46	Lower stone from a rotary quern, found in Llyn Alaw after drought reduced water levels. The stone is Anglesey conglomerate and shows signs of wear, but is otherwise in excellent condition	7044	Iron Age	239590	387440
47	Sub-circular enclosure with surrounding ditches. (Sulikowska & Corbett, 2013)	61454	Iron Age	238360	391520
48	A small circular gully which may represent a drip gully of an Iron Age roundhouse. Only half the feature was visible and further excavation may reveal associated features.	69897	Iron Age	239872	392813
49	Curving trends form a ring ditch that coincides with grass-marks observed on the ground. Lack of enhancement suggests a non-occupation site (Wood 2006).	71275	Prehistoric	241128	392639

CA Ref.	Description	HER Ref.	Period	Easting	Northing
51	Two well-defined sub-rectangular low-moderate positive polarity ditch-type anomalies with associated parallel areas of increased negative response have been identified at the northern edge of the survey area.	90053	Prehistoric	241522	384133
	Boat-shaped stone axe (granite?), found at Coedana in draining a field 1887. Another, smaller, found and lost.	3586	Prehistoric	242600	382300
52	Aerial survey by Pixaerial showed a large sub-circular earthwork c.80m in diameter. Field survey showed that only one side of the feature is readily visible on the ground and this could be interpreted as a platform c.30m in diameter, indicating a prehistoric settlement.	34698	Prehistoric	243470	385900
	A Graig Lwyd roughout was found in ploughing on this farm. A Mynydd Rhiw axe and an axe-hammer have previously been found near here	5064	Prehistoric	244300	385200
53	A circular enclosure c.50 m in diameter, visible on aerial photographs but not visible on the ground.	55725	Prehistoric	237920	388100
	Stone axe found by Mr. S. O. Jones of Pwllcoch Uchaf, Rhosybol, Anglesey	2098	Prehistoric	242550	387120
54	A cup and ring marked stone of the local hornblende picrite, 1.11m long, 0.60m wide and 0.30m thick, is in the garden of Llwydiarth Esgob Farm.	3592	Prehistoric	243600	384400
55	Series of cropmarks identified south of Glan Gors earthworks - consisting of a large number of curvilinear, rectangular and square features (Owen & Woods, 2020).	96757	Prehistoric/Roman	243678	379996
56	Scraper, Possible, Findspot, Llannerch-y-medd	5766	Prehistoric	237300	387850
57	Rectangular (?but irregular) enclosure, with possible 'antennae' features	5199	Prehistoric	240900	392750
58	Circular mound at the stream-side (GAT 1994)	38096	Prehistoric	240730	392870
59	(Area 72) A triangular feature which contains a circular anomaly within it has been detected. In strong association is P15 which may be associated with A2 (Sykes, Goulding & Trace, 2017).	90486	Prehistoric	242689	387134
60	(Area 78) Within a confused landscape, yet within close proximity to a change in landscape, a circular anomaly can be detected in the data and may be archaeological in nature. However, the magnetically busy sub-soil, may partially obscure any clarity	90483	Prehistoric	241562	388311
61	Small sub-circular enclosure: cropmark discovered during aerial reconnaissance by J. Rowlands and D. Roberts (Pixaerial). Geophysical survey (magnetometer) and soil test-pitting was carried out in order to investigate the nature of the site.	33546	Prehistoric/Roman	244500	382500
61	Scraper, Possible, Findspot, Llannerch-y-medd	93559	Prehistoric	242637	383215
62.1	A boulder with a series of possible cupmarks present	90197	Prehistoric	242696	384447
62.2	A series of possible cupmarks on a stone atop a rocky ridge.	90196	Prehistoric	242619	384399

CA Ref.	Description	HER Ref.	Period	Easting	Northing
63	A large rectangular enclosure of Iron Age / Romano-British date. First identified during the geophysical survey, thought to be a large rectangular enclosure (Cooper 2015).	69909	Prehistoric/Roman	241041	392464
	1 upper stone of rotary quern.	7989	Prehistoric	244500	383100
64	A possible pit. Possibly of a Romano-British or Late Prehistoric date. Dates given due to proximity of activity in Trench 27 (Cooper 2015).	69903	Prehistoric/Roman	240527	392678
65	A gully with an unclear course. Possibly of a Romano-British or Late Prehistoric date.	69904	Prehistoric/Roman	240498	392669
66	A small circular gully of Prehistoric or Romano-British date. Shares similarities with the possible roundhouse (PRN 69897) (Cooper 2015).	69898	Prehistoric/Roman	240412	392719
67	A possible Iron Age / Romano-British Livestock enclosure. (Cooper, 2015)	69906	Prehistoric/Roman	240914	392710
67	Quernstones (and other discoveries) ploughed up by Mr. Parry Jones of Ty Mawr, Llangwyllog.	4029	Prehistoric	243700	379400
68	A ditch, possibly of a Romano-British or Late Prehistoric date (Cooper 2015).	69902	Prehistoric/Roman	240509	392675
68	A quern was found on Ceidio farm about 1966 and was later in the possession of the headmaster of Llanerchymedd Primary School	2095	Prehistoric Worked Stone	241550	386450
69	A circular cropmark visible on aerial photographs at SH 43308283.	3585	Bronze Age	243300	382830
	Reported to GAT by Mr. Lewis, the finder, at Eisteddfod 1989, a quernstone he found in one of his fields. Findspot recorded, but no further information	3179	Prehistoric	238980	388560
70	The object may be a coin or token, but it is not possible to identify it further. The surface is so badly corroded that it appears to be peeling off in places.	24077	Roman	244560	382610
71	Projected Roman Road	17837	Roman	243387	381400
72	Projected Roman Road	17836	Roman	240451	382069
73	Projected Roman Road	17838	Roman	246152	380393
74	Projected Roman Road	17850	Roman	247025	380181
75	A quadrangular enclosure bounded by a low stony bank in which at places wall faces can be seen indicating a wall originally c.3ft thick. The enclosure measures approx 85ft from north to south and 75ft from E to W. A gap 13ft wide represents the entrance	1552	Roman	247100	385000
76	Oval enclosure ditch, average diameter 130m: northern portion bounded by a hedge.	2093	Roman	242350	385380
77	Section of trackway to the north of the village. Metalled surfaces observed in some places. Local knowledge suggest that this may be the location of a road of possible Roman date and is known by locals as "The Roman Road". However, a later date cannot be excluded	90201	Roman	241765	385540
78	A copper cake approximately 12ins diameter, originally kept in the offices of the Parys Copper Mine, about 50yrs ago	3561	Roman	244000	390000
79	The owner of Plas Trefor, now 87, remembered a copper cake.	2071	Roman	238000	389000

CA Ref.	Description	HER Ref.	Period	Easting	Northing
80	Three Roman copper cakes found before June 1871 at Bryn-Du near the Rhos Goch railway station. Two were stamped IVLS. Two of these were sent to the British Museum and one to W.O. Stanley. A 'few score yards' south of this find there are 'ancient workings	2068	Roman	239700	389500
81	On the south slope of Pen-y-morwydd; it is a rough pentagonal enclosure with a ditch and two banks. the defences remain in their original state on the east side only, elsewhere the earthwork has been almost ploughed away.	3053	Roman	238490	391060
82	On the top of a hill, near where the old house of Y Werthyr (the fortification) was situated, there can be seen today the ruins of an old earthwork fortification...sometimes they (the cattle) would go down into the old trench	3546	Roman	240860	392530
83	A well dedicated to Elaeth is said to be located to the north of Rhosgoch at Gwredog. - K&E Gruffydd (1999). There is a well shown at Gwredog on the 1st ed OS map, the well now appears to have been converted into a tank. (Parry, Smith and Hopewell, 2011)	32076	Early Medieval	241814	390037
	A collection of 38 artefacts, 36 of which lithic, recovered from a field near the River Cefni during recent survey work. Lithic assemblage consisted of scrapers, blades, awls, burnt flint and debitage. Lithic distribution atop a raised area	96747	Prehistoric	243200	380600
84	Flint Findspot, Llangwyllog	7084	Prehistoric	243400	379700
	There was a kind of square pillar in the parish of Llanbabo of about 10ft in height, one in breadth and near the same thickness. The stone was broken in two pieces, and removed from the place where it stood. The inscription is yet preserved.	2750	Early Medieval	237620	388420
85	The presence of a single flint scrapper and a number of struck flints would suggest that there is likely to have been prehistoric activity within the area	74591	Prehistoric	245710	383193
	A habitation site at Rhos Goch revealed a hearth with an arc of stake holes at one side, seven postholes, two gullies and two pits. Only part of the archaeological deposit was excavated. By the hearth sealed by the occupation earth was a broken leather object	2099	Early Medieval	242800	388700
86	Capel Lidach, near Trewynn. Site mile N W of Llanfihangel Trer Beirdd Church. Demolished. writes 'Ligach, the name of some Irish	2107	Early Medieval	245000	385000
87	Skinner shows Fynnon Gybi on the S side of the road. Only Gould and Fisher followed by Jones' 'Holy Wells of Wales' describe Ffynnon Seiriol as still running and Ffynnon Gybi as filled in.	3580	Early Medieval	244900	384100
88	About 1/4 mile further beyond Carreg Lledr - SH44638431 Mr Richards pointed to the spot where formerly stood the nunnery of Clorach or St Claire, and not far from it, by the roadside	3590	Early Medieval	244900	384400

CA Ref.	Description	HER Ref.	Period	Easting	Northing
89	Roughly rectangular slab, 29ins x 9ins, of gritstone with incised decoration of large circle, 2 vertical bars with a shorter bar between, all conjoined, with 2 small circles and a larger circle respectively in upper and lower spaces.	2189	Early Medieval	245900	383700
90	Pandy shown on OS 1st, 2nd and 3rd OS maps.	36158	Medieval	239204	390162
91	A sinuous field bank, forming the boundary between Ty'n Rhos, Llanol and Fferam Gyd. Obviously earlier than the present rectilinear field system, and may be the boundary to the medieval hamlet of Gwaunydog. (Davidson & Flook, 1994)	55724	Medieval	237300	387600
92	The field in which the platform house is located is known as 'Cae Hen Eglwys' and by tradition the site is an old church. <2>	5634	Medieval	237400	387500
93	Body fragment of a copper alloy vessel, possibly a cauldron (or skillet?). The condition of the item appears to be stable despite the adherence of organic remains to the internal surface. It is probable that this may be part of the same vessel as PRN 2	24107	Medieval	244560	382610
93	Cast copper alloy leg from probably medieval pot, possibly a cauldron or skillet.	24078	Medieval	244560	382610
94	Melin Nant, Remains of, Mechell	36129	Medieval	239270	389967
95	Plas Bodewryd Mansion PRN 3,548; large cow? sheds to N of the plas; many small outbuildings now lost. Farmstead plan types are explained in detail in Report 1657: Farmstead Mapping Attribute Table (Page 8-10) (Ferreira 2023).	98181	Medieval	240012	390833
96	The mill belonging to Bodewryd estate - now a studio/shop and little evidence for a mill on the ground. (Davidson, 2002)	36137	Medieval	239757	391016
97	Field Boundaries, Plas Foel	30920	Medieval	242736	384546
	Melin Rhyd y Felin, Possible Former Site of, Carreglefn	36132	Medieval	239500	389400
98	Village of Llanerch-y-medd, Llannerch-y-Medd	5682	Medieval	241800	384140
99	A circular cropmark, possibly a ring-motte. Visible on aerial photographs at SH 44698339.	3584	Medieval	244698	383372
100	Reference to a possible defended site 'Ynys Gynrig', found on a raised area surrounded by marshland half a mile west of Llangwyllog church. Site marked identified as strongest candidate given its distance from Llangwyllog church; its raised nature and tra	96755	Medieval	242500	380000
101	Recorded battle between Llywelyn and loyalist forces to Rhodri in an area called 'Coettanau' in 1194. Suggested location of battle due to place name 'cae cyrch gwyddel' / 'field of the bloody Manx/Irishman' located south of Llannerch-y-Medd. Metal detect	90204	Medieval	242052	382900
102	Ditch, Rhyd y Groes	69925	Post-medieval	240770	392778
103	Circular Enclosure, Cae Trenches, Nr. Llifad	3054	Undated	238610	390730
	Field Boundary, Possible, Rhyd y Groes	69921	Post-medieval	240192	392789
104	Field Boundary, Possible, Rhyd y Groes	69922	Post-medieval	240219	392783
105	Field Boundary, Rhyd y Groes	69920	Post-medieval	239881	392789
106	Field Boundary, Rhyd y Groes	69924	Post-medieval	240788	392775

CA Ref.	Description	HER Ref.	Period	Easting	Northing
107	Field Boundary, Site of, Rhosbeirio	59778	Post-medieval	239113	390926
108	Field Boundary, Site of, Rhosbeirio	59779	Post-medieval	239484	390956
109	Field Boundary, Site of, Rhosbeirio	59780	Post-medieval	239528	391022
110	Gwredog Mine, Rhosybol	21516	Modern	241700	390100
111	Parys Mountain, Bronze to Modern mining site		Prehistoric to Modern	243750	390235
112	A perforated axe-hammer was found in Cae Pellof Tyn-y-Nontfield, during ploughing by Mr. Jones, Plas-Newydol Farm, Rhosybol in the early 1940s. The axe hammer of coarse conglomerate is 6 inches long, 3 inches wide and 1 inches thick.	2094	Prehistoric	243240	389250
113	Penbol Quarry, Rhosybol	21936	Modern	239800	388000
114	Small quarry noted during the site visit		Modern	243771	381218
115	Pond, Hen-Hafod-Llin	98085	Undated	240464	391466
116	Area of disturbance, geology and a potential U-shaped enclosure which can be see in the ground and may be reflect the change in the landscape.	90481	Undated	241182	388500
118	Ditch ran on a north-east/south-west alignment for c.39m on the eastern side of the excavation area. The ditch truncated pit and ditch and was truncated by ditches.	100552	Undated	242224	386125
119	Double-ditched trackways/ field boundaries and strong geological bands in the data. Evidence of possible archaeology and a service pipe which runs west to east. The northeast corner of this field has a linear which may be an earlier phase	90494	Undated	245853	383467
120	Evidence of possible archaeology along the western boundary of the field. A service pipe which runs west to east. There is evidence of field drains which originate from an area of hardstanding in the field.	90495	Undated	245872	383338
121	Area of a standing stone. Magnetic disturbance from house building and road construction. There may be an association between the faint linears and the standing stone.	90496	Undated	246082	383419
122	Double ditched trackways/field boundaries, and possible archaeological features identified through geophysical survey	90493	Undated	245789	383628
123	A ditch of unknown date or function. (Cooper, 2015)	69899	Undated	240465	392675
124	A ditch of unknown date or function. (Cooper, 2015)	69900	Undated	240477	392663
125	A ditch of unknown date or function. (Cooper, 2015)	69901	Undated	240451	392684
126	Sub-square enclosure, formed by stone walling now largely tumbled, of uncertain date and function. (GAT 1994)	38100	Undated	240550	392650
127	Trenches 34, 35 contained ditches matching cropmarks identified in aerial photographs. These appear to represent field boundaries, however the crop marks show no specific layout or structure (Cooper 2015).	69907	Undated	240832	392610
128	Trenches 34, 35 contained ditches matching cropmarks identified in aerial photographs. These appear to represent field boundaries, however the crop marks show no specific layout or structure (Cooper 2015).	69908	Undated	240911	392654

CA Ref.	Description	HER Ref.	Period	Easting	Northing
129	Hollow-way, of uncertain date, now disused but formerly leading to the stream and enclosure E (PRN 38100). (GAT 1994)	38099	Undated	240760	392640
130	Two parallel ditches running North. Located in the southern end of trench 29, and corresponding to anomalies from the geophysical survey (Cooper 2015).	69905	Undated	240530	392643
131	An earthwork 350yds SSE of Llified in a field named Cae Trenches, appears to have a circular enclosure 75ft in diameter. Almost ploughed out. (RCAHMW, 1937)	3054	Undated	238610	390730
132	Possible archaeology. A linear response which does not correspond with other features in detected. It may form part of a former field boundary	90476	Undated	238560	390628
133	Evidence of archaeology with multiple ferrous magnetic disturbance across the survey area. Some evidence of double-ditched field boundaries and some possible archaeology.	90480	Undated	241027	388929
134	Evidence of archaeology with multiple ferrous magnetic disturbance across the survey area. Some evidence of double-ditched field boundaries and some possible archaeology.	90479	Undated	240968	388905
135	Ditch, Near Llanbabo	69680	Undated	237557	386734
135	A circular enclosure c.60m in diameter, visible on aerial photographs, although not visible on the ground. Also visible on the aerial photograph is a straight line crossing the enclosure from south-east to north-west: this looks like a modern field bound	5872	Undated	237700	388260
136	Small, well-defended sub-ovoid or trapezoidal enclosure of about 0.1ha internally containing at least one round house built into or closely adjoining the enclosure bank.	29389	Undated	244600	385600
137	Enclosure, North East of Bachau	30917	Undated	243342	384018
138	The ditch 58102 appeared likely to be a boundary ditch, though it was heavily ploughed out and it was unclear whether it was a removed field boundary, or part of the enclosure suggested by the geophysical survey	90574	Undated	245331	383877
139	Within this parcel of land, two striking linears have been identified as archaeological in nature because of their orientation in contrast to the existing boundaries. Within this area are a small collection of anomalies which have been grouped.	90500	Undated	246306	382179
140	Large earthworks identified during desk-based assessment - consists of large banks and shallow earthworks on an area over 300m long by over 200m wide. Concentric earthwork on north-west corner of rectangular earthworks may indicate later reuse of the site.	96752	Undated	244026	380531
141	LiDAR identified a number of small mounds to the west of Trescawen farm, running alongside a possible section of the Roman road. These may be funerary monuments, but it is possible they may also be natural.	96758	Undated	244309	381459
142	Site of the Former Oil Depot		Modern	241091	390735
143	Amlwch to Gaerwen Railway Line that opened in 1867		Modern	240944	389394

CA Ref.	Description	HER Ref.	Period	Easting	Northing
144	Cropmark identified during PhD research in 2023. Cropmark appears to be curvilinear in shape, possibly subcircular when intact. Cropmark measures approximately 20m in diameter, with a central cropmark, possibly a pit, measuring 2.5m in diameter. Possible prehistoric burial?	103454	Undated	242044	392266
145	Surface features identified on LiDAR during PhD research in 2023. Relationship to existing field boundaries unclear - it is possible it may be a relict field boundary, although there appear to be traces of a polygonal enclosure here. Elevated position combined with presence of a defended prehistoric enclosure nearby	103455	Undated	240370	390965
146	Site consists of large curvilinear earthwork measuring approximately 36m in diameter. Possible traces of multivallate bank system, which combined with its position on a raised hilltop with views across the island, gives it archaeological potential. Geophysical survey work conducted during the PhD has identified anomalies indicative of a multivallate bank systems indicative of an upland prehistoric settlement. In addition, during the site work a large gritstone bowl was also observed and recovered from the site	103456	Bronze Age	241760	389814
147	Cropmark identified during PhD research in 2023. Cropmark appears to be polygonal in shape, measuring 56m by 49m. A series of other cropmarks are visible nearby, although their relationship with the possible enclosure remains unclear. The cropmarks appear to predate the extant field boundaries, as the centre of the feature can be seen to run underneath them	103457	Undated	240579	387998
148	Quarry, north-east of Llanerch-y-medd	30924	Modern	242491	384398
149	Quarry, West of Penbol Uchaf	27671	Modern	239056	387467
150	Possible Mesolithic flintwork near Maen Gwyn (Owen 2018)	-	Mesolithic	242563	382087

Selected Previous Archaeological Investigations

CA Ref	Description	HER Ref.	Easting	Northing
E1	Evaluation comprising of a desk-based assessment, watching brief, and trial trenching carried out by Gwynedd Archaeological Trust in advance of the construction of a proposed wind farm at Rhosgoch, Anglesey.	40081	240760	392734
E2	Evaluation consisting of geophysical survey, trial trenching and field survey undertaken by Wessex Archaeology for the Time Team Television programme	41500	240871	392533
	GSB Prospection Ltd were asked by Channel 4's Time Team to undertake a geophysical survey to define earthworks known as Y Werthyr and detect any further archaeology in the vicinity	45290	240860	392530
E3	Evaluation consisting of trial trenching undertaken by Wessex Archaeology in advance of proposed development on land at Rhosbeirio, Llanfechell, Anglesey	44586	239502	390985
	Geophysical survey carried out by Wessex Archaeology on land at Rhosbeirio, near Llanfechell, Anglesey	44649	239502	390985

CA Ref	Description	HER Ref.	Easting	Northing
E4	Wessex Archaeology was asked by Natural Power Consultants Limited in 2014 to conduct a detailed gradiometer survey over land at Rhyd-y-Groes Wind Farm	45116	239283	392918
	Wessex Archaeology was asked by TPG Wind Ltd in 2015 to carry out trial trenching in advance of the planning application to repower the wind farm at Rhyd y Groes	45224	239281	392917
E5	During the 19th century a fragmented early bronze age urned cremation burial was found at Plas Penrhyn, Llanbadrig	46168	238000	393000
E6	Excavation carried out by Gwynedd Archaeological Trust of a site identified on aerial photographs	44149	237255	392171
E7	Watching brief carried out by Gwynedd Archaeological Trust during renovation works to St. Pabo's Church, Llanbabo, Anglesey	40369	237798	386775
E8	An archaeological site investigation on land along the route of a proposed water pipeline on Anglesey	45137	237500	385500
E9	In November 2021, Archaeology Wales Ltd carried out an archaeological Strip, Map and Record on land at Cae Mawr Llanerchymedd LL71 8AN, Anglesey centred on SH 42034 86095.	46530	242034	386095
E10		46660	240039	385672
E11	Metal detecting finds made by a member of the public	46667	239955	385818
E12		46641	246214	385063
E13	Casual finds found by a member of the public	46129	242500	382100
E14	A site visit was carried out by Jane Kenney of Gwynedd Archaeological Trust at the site of an excavation on Pen y Foel, Llannerch y Medd in 2020 following the potential discovery of a chambered tomb	45971	242690	384450
	A PhD student from Manchester Metropolitan University undertook an excavation on Pen y Foel, Llannerch y Medd as part of his PhD work, in 2020	45972	242690	384450
E15	Network Archaeology undertook an archaeological trenched evaluation to inform the National Grid North Wales Connection Project between the proposed new power station at Wylfa, Anglesey, and the substation at Pentir, Gwynedd, in 2017	45055	246342	381875
	Archaeological Services WYAS were commissioned by AMEC Foster Wheeler on behalf of National Grid to undertake a geophysical (magnetometer) survey extending from Wylfa on the Isle of Anglesey to the substation at Pentir, Gwynedd, in 2017.	45947	246342	381875
E16	Metal detecting find made by a member of the public in 2004	45528	247000	383000
E17	C.R Archaeology were instructed by E. Jones & O. Rowlands to conduct a programme of evaluation trenching at Plas Llanfihangel at the site of a proposed agricultural shed, milking parlour, farmyard, and small track.	45344	245710	383193
E18	A field visit undertaken by an amateur archaeologist in Coedana Parish in 2018. A possible standing stone was investigated on land owned by Plas Medd farm.	45237	242689	383439
E19	Metal detector use by a member of the public at Dyffryn, Pentraeth. A number of metal artefacts were recovered.	44210	244560	382610
E20	Archaeological work was carried out on behalf of the Department of the Environment on the Anglesey section of the Rhosgoch to Stanlow Shell pipeline. A total of seventeen sites were investigated in 1973 and 1974. A number of features were revealed including burnt mounds, and a possible area of medieval settlement.	42249	246000	383000

ANNEX 3: HISTORIC ORDNANCE SURVEY MAPPING (TO BE INCLUDED WITH FINAL REPORT)

ANNEX 4: WRITTEN SCHEME OF INVESTIGATION

Prosiect Maen Hir Anglesey

*Written Scheme of Investigation for a
Historic Environment Desk-Based Assessment*

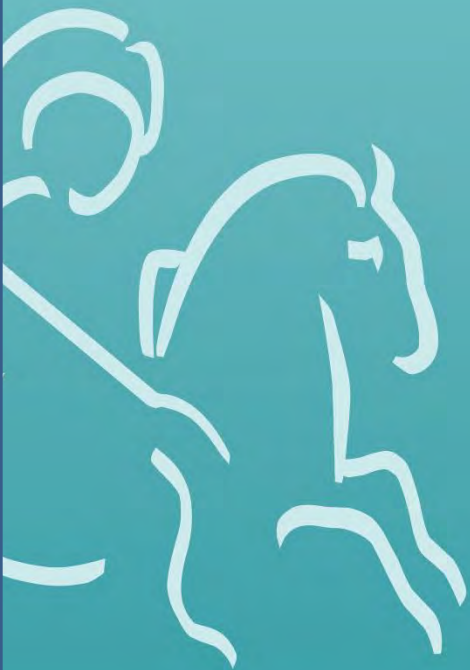


Report prepared for:
Lightsource Renewable UK
Development Ltd

CA Project: CR1327

CA Report: CR1327_1

October 2023



Prosiect Maen Hir Anglesey

Written Scheme of Investigation for a Historic Environment Desk-Based Assessment

CA Project: CR1327

CA Report: CR1327_1

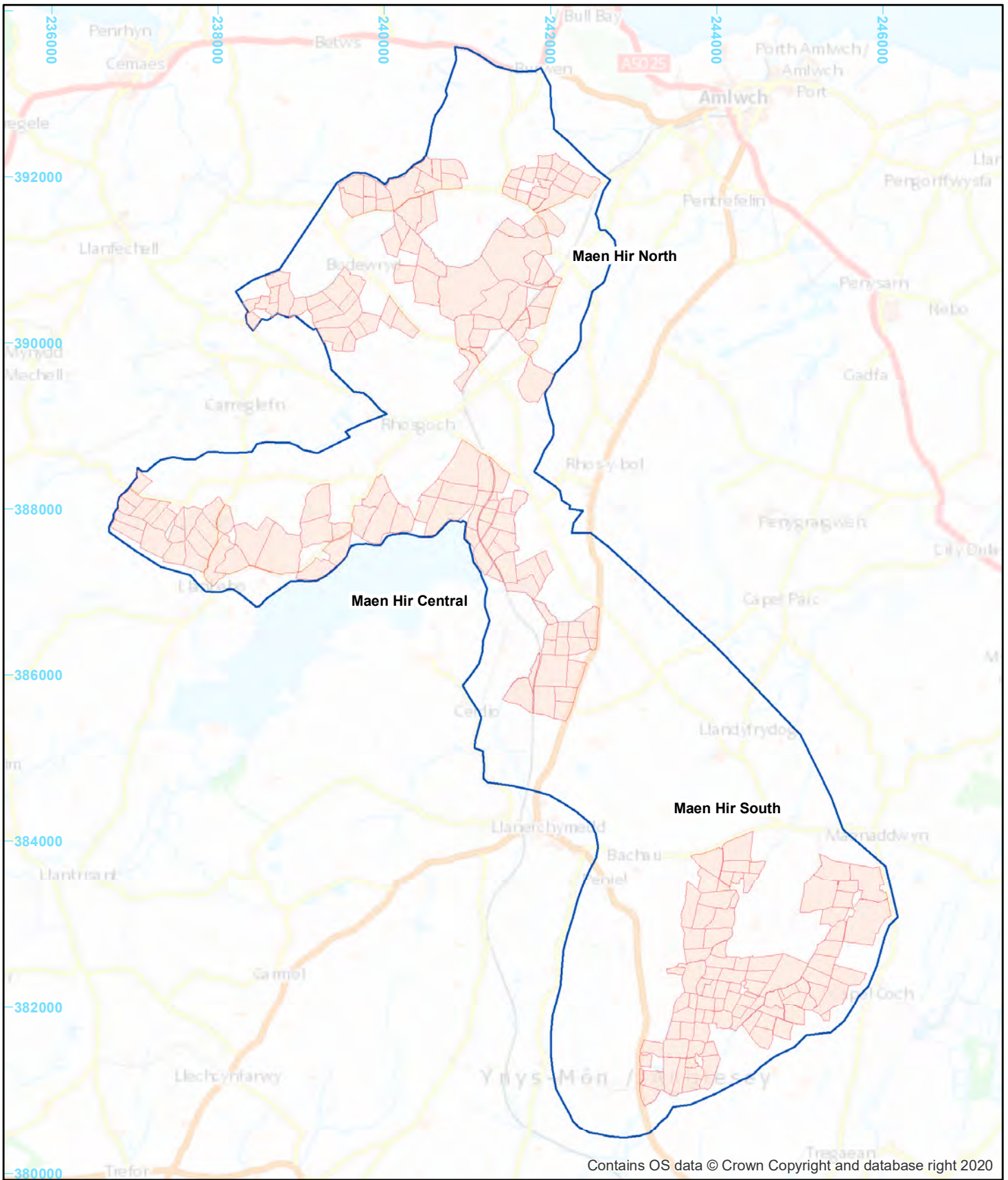
prepared by	Jon Sanigar, Heritage Consultant
date	October 2023
approved by	Julia Sulikowska, Principal Heritage Consultant
signed	
date	October 2023

This report is confidential to the client. Cotswold Archaeology accepts no responsibility or liability to any third party to whom this report, or any part of it, is made known. Any such party relies upon this report entirely at their own risk. No part of this report may be reproduced by any means without permission.

Cirencester Building 11 Kemble Enterprise Park Cirencester Gloucestershire GL7 6BQ t. 01285 771022 f. 01285 771033	Milton Keynes Unit 8 – The IO Centre Fingle Drive, Stonebridge Milton Keynes Buckinghamshire MK13 0AT t. 01908 564660	Andover Stanley House Walworth Road Andover Hampshire SP10 5LH t. 01264 347630	Suffolk Unit 5, Plot 11 Maitland Road Lion Barn Industrial Estate Needham Market Suffolk IP6 8NZ t. 01449 900120
e. enquiries@cotswoldarchaeology.co.uk			

CONTENTS

1.	INTRODUCTION.....	3
2.	BACKGROUND.....	3
3.	OBJECTIVES.....	6
4.	METHODOLOGY.....	6
5.	STAFF AND TIMETABLE.....	9
6.	ANALYSIS AND REPORTING.....	9
7.	HEALTH AND SAFETY.....	12
8.	INSURANCES.....	12
9.	QUALITY ASSURANCE.....	12
10.	REFERENCES.....	13



Contains OS data © Crown Copyright and database right 2020



Site Boundary

Scoping Boundary

N

0 2 km

© Crown copyright and database rights 2023 Ordnance Survey 0100031673

Andover	01264 347630
Cirencester	01285 771022
Milton Keynes	01908 564660
Suffolk	01449 900120

W www.cotswoldarchaeology.co.uk
E enquiries@cotswoldarchaeology.co.uk

PROJECT TITLE

**Maen Hir Solar Farm
Anglesey**

FIGURE TITLE

Site Location Plan

DRAWN BY	JXS	PROJECT NO.	CR1327	FIGURE NO.
CHECKED BY	JS	DATE	31/10/2023	
APPROVED BY	JS	SCALE @ A4	1:62,500	1

1. INTRODUCTION

- 1.1. This Written Scheme of Investigation (WSI) was prepared in September 2023 by Cotswold Archaeology, a Registered Organisation with the Chartered Institute for Archaeologists. It sets out a scope and methodology for a Historic Environment Desk-Based Assessment of land between Amlwch and Llyn Alaw, and land to the east and south of Llyn Alaw (NGR: 240923 388564; Fig. 1). An application for a Development Consent Order is to be submitted for the construction of a solar farm within the Site, consisting of solar panel arrays, accesses, temporary construction compounds, mitigation areas, project substation and Battery Energy Storage System (BESS) (Fig. 1: site boundary), with the high voltage cable route, grid connection corridor, construction access and further mitigation and enhancement areas to be located within a wider search area (Fig. 1: scoping boundary). The WSI has been commissioned by Lightsource Renewable UK Development Ltd.
- 1.2. This WSI has been guided in its composition by the ‘Standard and Guidance for Historic Environment Desk-Based Assessment’ (ClfA 2020a), Planning Policy Wales (Welsh Government 2021), Technical Advice Note (TAN) 24: The Historic Environment (Welsh Government 2017), and the *Guidance for the Submission of Data to the Welsh Historic Environment Records (HERs)* (WAT 2022). The desk-based assessment will be subject to the approval of the WSI by the Planning Archaeologist at Gwynedd Archaeological Trust, to seek agreement on the scope and methodology of the project, prior to undertaking the assessment. Upon completion a copy of the desk-based assessment will be sent to Gwynedd Archaeological Trust and the Royal Commission on the Ancient and Historical Monuments of Wales (RCAHMW) for deposition.

2. BACKGROUND

- 2.1. The Site is proposed for the development of a solar farm, accompanying substations and BESS on land around Amlwch and Llyn Alaw on the Isle of Anglesey in north Wales.
- 2.2. Ynys Môn, as Anglesey is known in Welsh, is the largest of the Welsh islands, covering some 720 square kilometres. The main towns on the island are Llangefni, Holyhead, Amlwch, Benllech, Menai Bridge and Llanfair, with the study area lying to the south and south-west of Amlwch. Amlwch is a historic port town which grew in the 18th century with the nearby Parys Mountain Coppermine, then later was known

for ship building, brewing, and tobacco manufacturing. Other than the small towns and villages, houses and buildings are scattered across the landscape, often associated with farming. There are a number of rural settlements surrounding the study area including the linear settlement of Rhos-y-bol. The nearest significant settlement, lying to the south of Llyn Alaw is the village of Llannerch-y-medd (population of 1,360).

Study area

- 2.3. An appropriate 'study area' will be utilised for the stepped assessment of settings and understanding the archaeological potential. Initial examination of the locale indicates that a 1km 'buffer' study area around the development area is likely to be appropriate for understanding the archaeological potential of the Site, and a 2km study area for the consideration of potential effects upon the 'setting' of historic assets. However, the site visit(s) and the developing understanding of historic significance and the scale of development may influence the final study area.

Designated historic assets

- 2.4. There are no Listed Buildings, Scheduled Monuments, Registered Parks and Gardens, Registered Battlefields or World Heritage Sites within the Site.
- 2.5. Within a 2km study area there are a total of:
- 78 Listed Buildings, comprising 15 Grade II* Listed Buildings and 63 Grade II Listed Buildings. These Listed Buildings comprise medieval churches to 19th/20th century structures;
 - 17 Scheduled Monuments, comprising prehistoric standing stones and enclosures and round barrows, and the 18th/19th century Parys Mountain open quarry with associated structures;
 - Two Conservation Areas Amlwch Central c.1.5km to the north-west of the Site and Llanfechell c.1.4km to the east; and,
 - The Registered Historic Landscape of Amlwch and Parys Mountain c.1km to the east of the Site.
- 2.6. The nearest Registered Parks and Gardens to the Site are:
- The Grade II Listed Cestyll, a parkland created in the 1920s located c.4.7km to the west of the Site; and,

-
- The Grade II* Listed Carreglwyd, an 18th century parkland located c.5.5km to the west of the Site.

Archaeological potential

2.7. The Site is situated over three main parcels: an area near Rhosgoch and Bodewryd ('Maen Hir North'), to the south-east and north of Llanerch-y-medd ('Maen Hir South'), and around the periphery of Llyn Alaw ('Maen Hir Central') (Fig. 1). Along with a rapid review of known archaeological remains within the Site and a 1km study area from freely available online heritage databases, including Coflein and Archwilio, the character and archaeological potential of the areas the Site covers are summarised below.

Maen Hir North

2.8. There appears to be a strong connection with prehistoric activity within the Maen Hir North area, in particular Bronze Age features, including metal working sites and mortuary features comprising a barrow and a cist. The later historic evidence suggests that there was a medieval settlement within the area's environs and the Site boundary. There is a medieval mill also recorded within this area which may bear relation to the medieval settlement.

Maen Hir Central

2.9. The Maen Hir Central area has a high percentage of archaeological features from the preliminary research. These assets include Bronze Age mortuary features and monuments with potential for older prehistoric remains, which come in the form of a potential Mesolithic flint scatter. The majority of features in the landscape may relate to later prehistoric or Romano-British activity. There are numerous enclosures, noted from excavations, and aerial photography and geophysical surveys, which have recorded four enclosures within the Site's boundary, and a further three noted in proximity too. The later medieval and post-medieval evidence relates to quarrying and agricultural activity, including mills.

Maen Hir South

2.10. The Maen Hir South area contains later prehistoric assets comprising remains of roundhouses, and a circular ditched enclosure is also noted within the study area which may relate to later prehistoric or Romano-British activity. This area of the Site contains a section of Roman Road, which most likely will have associated sites adjacent to it. There are other later trackways identified within the area and linear

features which could relate to field boundaries, enclosures or even further trackways all of which have an unknown provenance.

3. OBJECTIVES

3.1. The assessment will assess the known and potential historic assets within the Site, their survival and significance. The objectives of the desk-based assessment will be:

- to identify designated historic constraints within the Site and study area;
- to gather information on non-designated recorded historic assets through desk-based research, and through available archaeological survey information;
- to assess the above baseline information, and offer an analysis of the potential for currently unrecorded historic assets within the Site;
- to assess, as far as possible, the likely depth and extent of any below-ground archaeological deposits within the Site; and
- to assess the value of the historic assets affected by the proposed development and, where possible, the impact of the proposed development upon the value of these assets, including the setting of designated historic assets.

4. METHODOLOGY

Key heritage policy and guidance

4.1. The content, aims and method set out in this WSI have been guided by the following key documents:

- Historic Environment (Wales) Act 2016;
- Ancient Monuments and Archaeological Areas Act (1979);
- Planning (Listed Buildings and Conservation Areas) Act (1990);
- Overarching National Policy Statement for Energy (EN-1) 2011 (Section 5.8 Historic environment);
- Draft Overarching National Policy Statement for Energy (EN-1) 2023 (Section 5.9 Historic environment);
- Draft Overarching National Policy Statement for Energy (EN-3) 2023 (Section 3.10 on solar photovoltaic generation, with paragraphs 3.10.98-3.10.110 relating to cultural heritage);
- Planning Policy Wales (Welsh Government Edition 11, 2021);

- Technical Advice Note (TAN) 24: The Historic Environment (Welsh Government 2017);
- Hedgerows Regulations (1997);
- Anglesey and Gwynedd Joint Local Development Plan 2011 – 2026 (2017);
- Conservation Principles (Cadw 2011);
- Standard and guidance for historic environment desk-based assessment (ClfA 2020a);
- Setting of Historic Assets in Wales (Cadw 2017a);
- Heritage Impact Assessment in Wales (Cadw 2017b);
- Principles of Cultural Heritage Impact Assessment in the UK (IEMA, IHBC, ClfA 2021);
- Research Framework for the Archaeology of Wales; and
- The ‘Guidance for the Submission of data to the Welsh Historic Environment Records’ produced by the Welsh Archaeological Trusts (2022).

Desk-Based Assessment

4.2. The desk-based research and sources will be based upon the *Standard and Guidance for historic environment assessments* produced by the Chartered Institute for Archaeologists (ClfA 2020a). Cotswold Archaeology is a Registered Organisation with the ClfA, and the project will be managed and technically coordinated by a Member of the Institute.

4.3. The archaeological assessment will utilise a minimum study area of 1km around the boundary of the proposed Site. Data will be collated from published and archive sources of archaeological, historical, geographical, topographical, and environmental information relevant to the area of the development using the following sources:

- Cadw and RCAHMW for details of designated historic assets, e.g., Scheduled Monuments, Listed Buildings, Conservation Areas, Registered Historic Landscapes and non-designated historic assets. Conservation Area appraisals are available online through via the Ynys Mon/Isle of Anglesey County Council website;
- The Gwynedd Archaeological Trust Historic Environment Record (HER) for details of previously completed archaeological works in the vicinity and recorded historic assets;
- Aerial photographs curated by the Central Register of Aerial Photographs for Wales;

-
- The Archifau Ynys Môn/Anglesey Archives and mapping from online sources, for documentary sources and historic mapping of relevance to the historical development of the Site and its surroundings;
 - Remote sensing resources, i.e., LiDAR (provided by Natural Resources Wales);
 - Information regarding findspots from the Portable Antiquities Scheme;
 - Grey literature of relevant previous archaeological investigation;
 - Relevant national and local planning policy documentation; and
 - A walkover survey of the proposed Site and its environs to assess and document any extant evidence of historic assets, any evidence of previous disturbance within the area of the Site and the setting of historic assets.

Value of historic assets

- 4.4. The value of historic assets is best defined by the Cadw guidance, *Conservation Principles* (2011), which describes value as a combination of evidential value; historical value; aesthetic value; and communal value.
- 4.5. Evidential value derives from those elements of a historic asset that can provide evidence about past human activity, including its physical remains or historic fabric.
- 4.6. Historical value may derive from particular aspects of past ways of life, or association with notable families, persons, events or movements – it embodies the connection between past events and society with the present.
- 4.7. Aesthetic value derives from the sensory and intellectual stimulation drawn from a historic asset. It may include its physical form, and how it lies within its setting. It may also be the result of design, or an unplanned outcome of a process of events.
- 4.8. Communal value derives from the meanings that a historic asset has for the people who relate to it, or for whom it figures in their collective experience or memory. It may be commemorative or symbolic and relate to issues of identity or collective memory.

The setting of historic assets

- 4.9. The assessment will be undertaken in accordance with the approach outlined in Cadw's 'Setting of Historic Assets in Wales' (2017). This publication provides guidance on setting and development management, including the assessment of the implications of proposed development. It reiterates that 'the setting of a historic asset is the surroundings in which a historic asset is experienced. Its extent is not fixed and

may change as the asset and its surroundings evolve. Elements of a setting may make a positive or negative contribution to the significance of an asset, may affect the ability to appreciate that significance or may be neutral'. In accordance with the guidance, the extent of the setting of a historic asset is not fixed and can evolve periodically.

- 4.10. All historic assets have a setting, and features of a setting may make a positive or negative contribution to significance and may affect the appreciation of the asset. They can remain neutral. The extent and importance of setting is often expressed by reference to visual considerations but can also comprise other elements which contribute to the ways in which a historic asset is experienced, including factors such as noise, vibrations, dust, or other pollutants; spatial associations; the rarity of comparable survivals of setting, and associative relationships between historic assets.
- 4.11. The Site is located within the vicinity of the Registered Historic Landscape of Amlwch and Parys Mountain, which is situated c.1km to the east of Maen Hir North. It is proposed that ASIDOHL 2 Assessment (Cadw *et al.* 2007) will not be undertaken, but rather the effects of change within the setting of the Registered Historic Landscape will be assessed as part of the settings assessment.

5. STAFF AND TIMETABLE

- 5.1. This project will be under the management of Robert Sutton and Julia Sulikowska, Cotswold Archaeology. The assessment will be undertaken, and the subsequent report produced by Jon Sanigar. The desk-based assessment is anticipated in late 2023.

6. ANALYSIS AND REPORTING

- 6.1. The information collated will initially be assembled into a workable database. The assessment report will begin the title of the report being in both English and Welsh, along with a non-technical summary both in English and Welsh, in accordance with Guidance for the Submission of Data to the Welsh Historic Environment Records (WAT 2022), outlining in plain language the principal reasons for the work, its aims and main results. The introduction will then set out the circumstances leading to the commission of the report, any restrictions on reporting or access to relevant records, size, surface geology and topography of the study area. Any variation from the

methodologies set out in this project specification will be detailed and explained within the methodology section of the report.

- 6.2. The report will set out the information base regarding the assessment objectives, as set out in Section 3 above. The known and potential historic assets will be outlined clearly and objectively in relation to the methods used, organised by archaeological period or type, and with reference to, or inclusion of, supporting evidence. The results will be interpreted and put into context in terms of significance. A comprehensive list of sources consulted, with full bibliographic details, will be provided at the back of the report. Summaries will be included of any new identified assets during the course of the assessment, in accordance with Guidance for the Submission of Data to the Welsh Historic Environment Records (WAT 2022).
- 6.3. The assessment will be supported with illustrative material, including at least one figure showing known or potential historic assets within or affecting the proposed scheme. Where possible, areas of greater or lesser potential will be defined and the effects of previous construction, industrial and other intrusive activity taken into account.

Detailed Scope of Report Contents

- 6.4. The report will contain the following information:
- Data exemption form
 - Bilingual non-technical summary
 - Introduction
 - Planning background, including aims and objectives
 - Description of proposed development
 - Methodology
 - Site topography and geology
 - Archaeological and historic background and context (including information from cartographic and aerial photographic sources, and the Site inspection)
 - Assessment of effects (physical and non-physical)
 - Preliminary recommendations for work
 - Conclusions
 - References and bibliography

Archive deposition

- 6.5. The final archive (Site and research) will, whenever appropriate, be deposited with a suitable receiving institution, usually the relevant Local Authority museums service. Arrangements will be made with the receiving institution before work starts. A digital copy of the archive will also be sent to the RCAHMW following the guidance set out in the '*RCAHMW Guidelines for Digital Archives*' (2015).
- 6.6. Wherever the archive is deposited, this information will be relayed to the HER. A summary of the contents of the archive will be supplied to the Gwynedd Archaeological Trust. This will be in line with the guidance published by National Panel for Archaeological Archives in Wales (NPAAW), '*National Standard and Guidance to Best Practice for Collecting and Depositing Archaeological Archives in Wales*' (2017).

New historic assets and archaeological events

- 6.7. Prior to depositing the archive, summaries of newly identified historic assets will require summaries in both English and Welsh, set out in Section 4.1 of the *Guidance for the Submission of Data to the Welsh Historic Environment Records* (WAT 2022). The requirements for the summaries are below.
- 6.8. Any historic assets that were newly identified during the course of the assessment will have a summary provided, in both English and Welsh, which will be incorporated into a new asset form (located in Section 4.4 of the *Guidance for the Submission of Data to the Welsh Historic Environment Records* (WAT 2022) and submitted with the report. The summary will address these key points:
- Type of period of the asset
 - Location of the asset
 - Nature of the discovery
 - Method and material of construction
 - Reference to any known associated assets or artefacts
 - Possible interpretations
 - Significant features or associations and their size and shape
- 6.9. Shapefiles of the Site boundary, study area, and any new historic assets will be submitted to the Gwynedd Archaeological Trust Historic Environment Record, in accordance with requirements set out in Sections 4.4, 4.6, and 4.7 of the *Guidance for the Submission of Data to the Welsh Historic Environment Records* (WAT 2022).

Photographs

- 6.10. Photographs used within the assessment report will be provided to the Gwynedd Archaeological Trust as separate files, including a photograph register containing metadata as set out in Section 4.5 of the *Guidance for the Submission of Data to the Welsh Historic Environment Records* (WAT 2022).

7. HEALTH AND SAFETY

- 7.1. CA will conduct all works in accordance with the Health and Safety at Work Act 1974 and all subsequent Health and Safety legislation, and CA Health, Safety and Welfare Policy (2010).

8. INSURANCES

- 8.1. CA holds Public Liability Insurance to a limit of £15,000,000 and Professional Indemnity Insurance to a limit of £10,000,000.

9. QUALITY ASSURANCE

- 9.1. CA is a Registered Organisation (RO) with the Institute for Archaeologists (RO Ref. No. 8). As a RO, CA endorses the Code of Conduct (ClfA 2019) and adheres to the Standard and Guidance for Commissioning Work or Providing Consultancy Advice on Archaeology and the Historic Environment (2020b). All CA Project Managers and Project Officers hold either full Member or Associate status within the ClfA.
- 9.2. CA operates an internal quality assurance system in the following manner. Projects are overseen by a Project Manager who is responsible for the quality of the project. The Project Manager reports to the Chief Executive who bears ultimate responsibility for the conduct of all CA operations. Matters of policy and corporate strategy are determined by the Board of Directors, and in cases of dispute recourse may be made to the Chairman of the Board.

10. REFERENCES

The Ancient Monuments and Archaeological Areas Act 1979 Act of UK Parliament

Cadw, Welsh Assembly Government and Countryside Council for Wales 2007 *Guide to Good Practice on Using the Register of Landscape of Historic Interest in Wales in the Planning and Development Process. Revised (2nd) Edition Including Revisions to the Assessment Process (ASIDOHL2)*

Cadw 2011 *Conservation Principles, Policies and Guidance for the Sustainable Management of the Historic Environment in Wales*

Cadw 2017a *Setting of Historic Assets in Wales*

Cadw 2017b *Heritage Impact Assessment in Wales*

Chartered Institute for Archaeologists 2020a *Standard and Guidance for Historic Environment Desk-Based Assessment.*

Chartered Institute for Archaeologists 2020b *Standard and Guidance for Commissioning Work or Providing Consultancy Advice on Archaeology and the Historic Environment*

IEMA, IHBC, Cifa 2021: *Principles of Cultural Heritage Impact Assessment in the UK*

National Panel for Archaeological Archives in Wales 2017 *National Standard and Guidance to Best Practice for Collecting and Depositing Archaeological Archives in Wales*

Planning (Listed Buildings and Conservation Areas) Act 1990 Act of UK Parliament

RCAHMW 2015 *RCAHMW Guidelines for Digital Archives*

Research Framework for the Archaeology of Wales
<https://www.archaeoleg.org.uk/intro.html>

Welsh Archaeological Trusts 2022 *Guidance for the Submission of Data to the Welsh Historic Environment Records (HERs)*

Welsh Government 2017 *Technical Advice Note (TAN) 24: The Historic Environment*

Andover Office

Stanley House
Walworth Road
Andover
Hampshire
SP10 5LH

t: 01264 347630

Cirencester Office

Building 11
Cotswold Business Park
Cirencester
Gloucestershire
GL7 6BQ

t: 01285 771022

Milton Keynes Office

Unit 8 - The IO Centre
Fingle Drive, Stonebridge
Milton Keynes
Buckinghamshire
MK13 0AT

t: 01908 564660

Suffolk Office

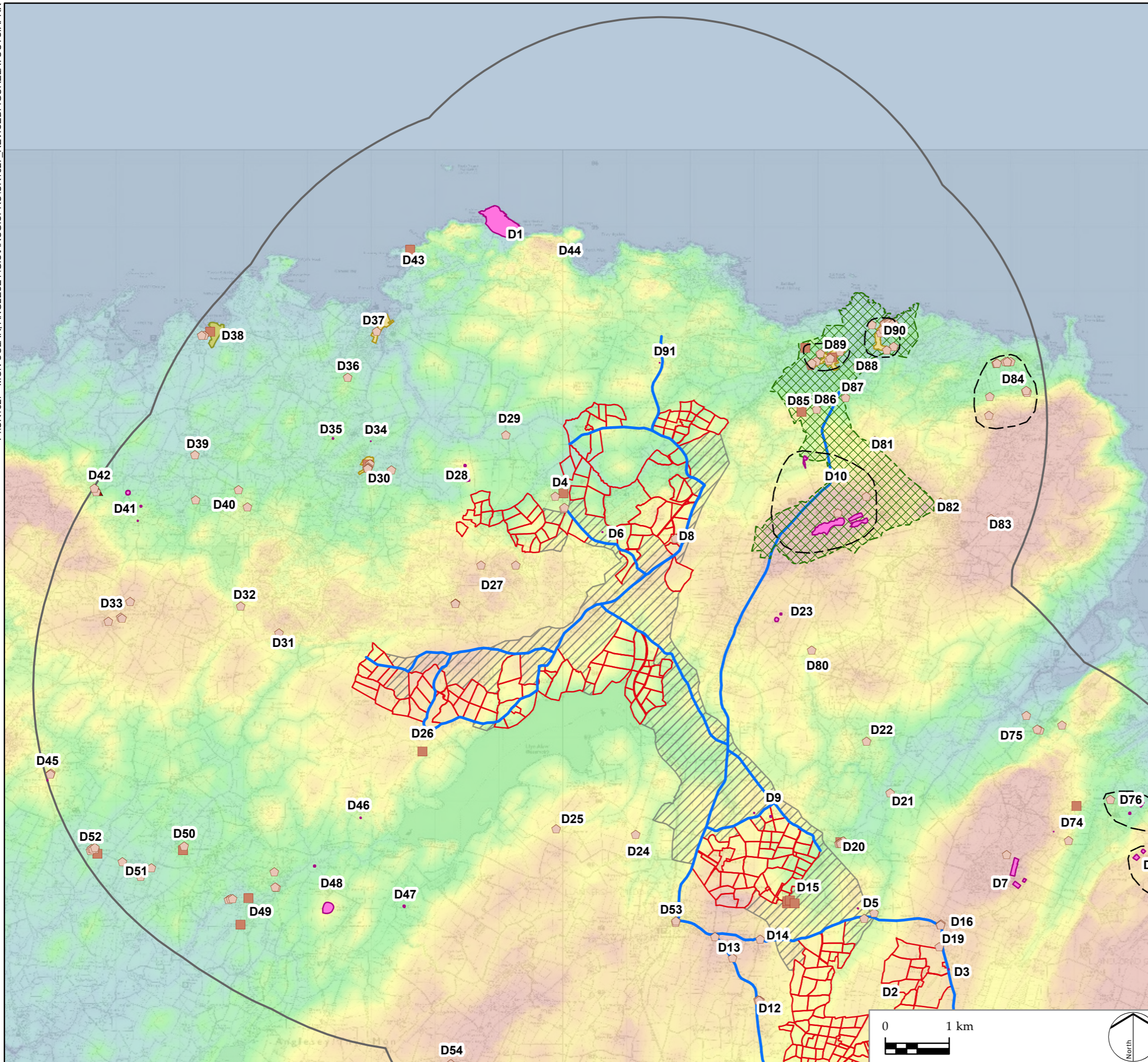
Unit 5, Plot 11, Maitland Road
Lion Barn Industrial Estate
Needham Market
Suffolk
IP6 8NZ

t: 01449 900120












e: enquiries@cotswoldarchaeology.co.uk



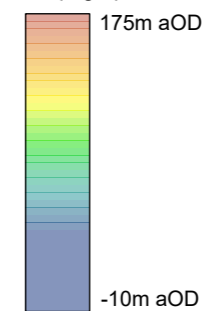
ANNEX 5: ASSESSMENT FIGURES



LEGEND

-  Site Boundary
-  5km Study Area
-  Cable Route Corridor
-  Scheduled Monument
-  Registered Park and Garden
-  Conservation Area
-  Amlwch and Parys Mountain RHL
-  Highway Works
-  Grade I Listed Building
-  Grade II* Listed Building
-  Grade II Listed Building

Topographic Data



OS data © Crown copyright and database right [2024]



PROJECT TITLE
PROSIECT MAEN HIR

DRAWING TITLE
Maen Hir North and Central
Designated Historic Assets

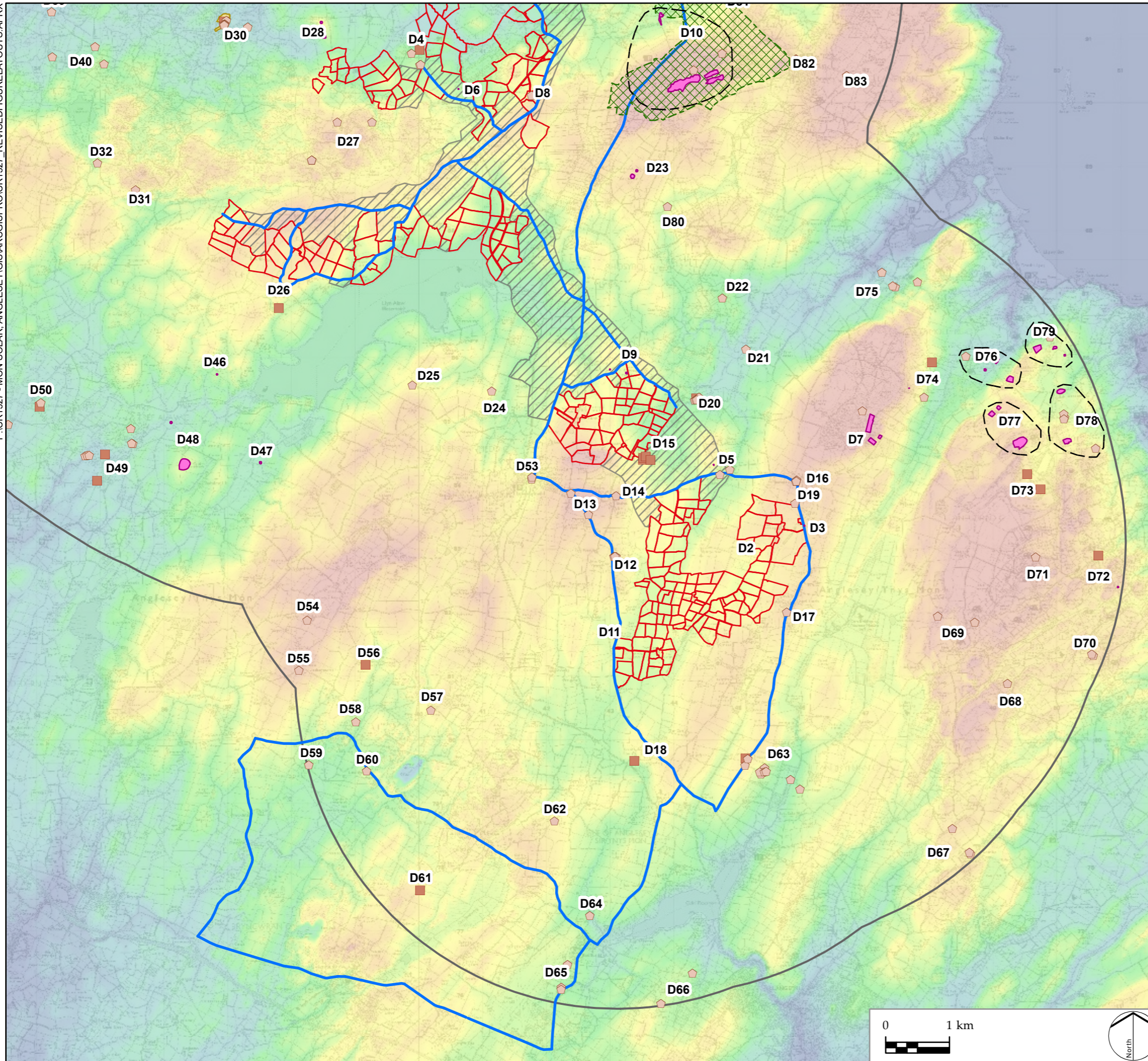
ISSUED BY	Andover	T: 01264 347 630
DATE	25/07/2024	DRAWN DL
SCALE @A3	1:60,000	CHECKED JS
STATUS	Draft	APPROVED JS

DWG. NO. 2

No dimensions are to be scaled from this drawing.
All dimensions are to be checked on site.
Area measurements for indicative purposes only.

© LDA Design Consulting Ltd. Quality Assured to BS EN ISO 9001 : 2015
© Cotswold Archaeology: 2024

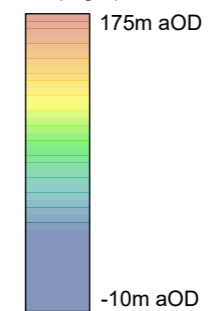
Sources: Ordnance Survey, Natural Resource Wales, Isle of Anglesey County Council



LEGEND

- Site Boundary
- 5km Study Area
- Cable Route Corridor
- Scheduled Monument
- Registered Park and Garden
- Conservation Area
- Amlwch and Parys Mountain RHL
- Highway Works
- Grade I Listed Building
- Grade II* Listed Building
- Grade II Listed Building

Topographic Data



OS data © Crown copyright and database right [2024]



PROJECT TITLE
PROSIECT MAEN HIR

DRAWING TITLE
Maen Hir South A & South B
Designated Historic Assets

ISSUED BY	Andover	T: 01264 347 630
DATE	25/07/2024	DRAWN DL
SCALE @A3	1:60,000	CHECKED JS
STATUS	Draft	APPROVED JS

DWG. NO. 3

No dimensions are to be scaled from this drawing.
All dimensions are to be checked on site.
Area measurements for indicative purposes only.

© LDA Design Consulting Ltd. Quality Assured to BS EN ISO 9001 : 2015
© Cotswold Archaeology: 2024

Sources: Ordnance Survey, Natural Resource Wales, Isle of Anglesey County Council