





- LEGEND
-  Site Boundary
  -  Study Area
  -  Cable Route Corridor
  -  Highway Works



PROJECT TITLE  
PROSIECT MAEN HIR

DRAWING TITLE  
Rhodygeidio and Amlwch Parish Tithe  
Maps - Maen Hir South A

ISSUED BY	Andover	T: 01264 347 630
DATE	25/07/2024	DRAWN DL
SCALE @A3	1:8,000	CHECKED JS
STATUS	Draft	APPROVED JS

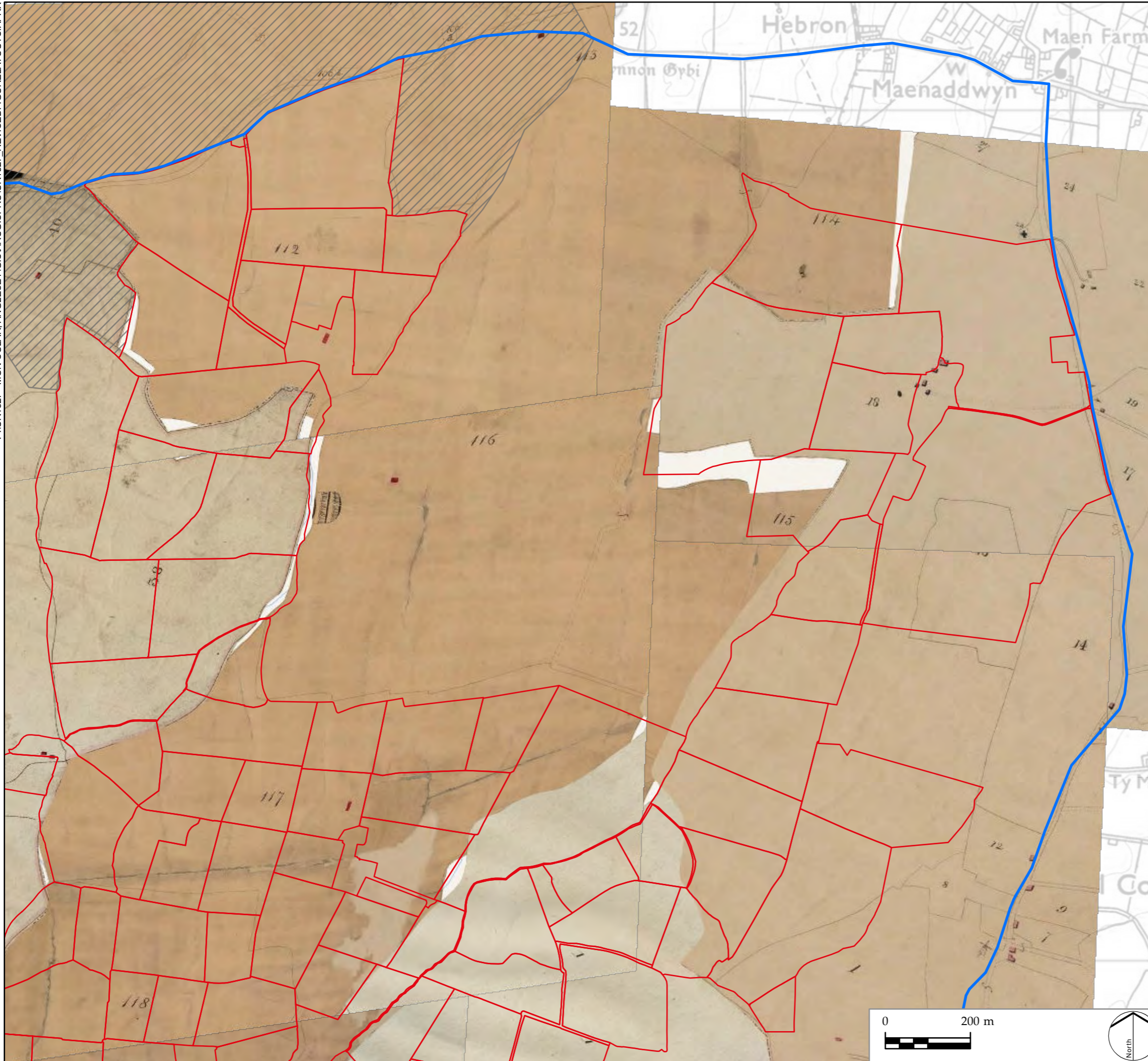
**DWG. NO. 32**

No dimensions are to be scaled from this drawing.  
All dimensions are to be checked on site.  
Area measurements for indicative purposes only.





© LDA Design Consulting Ltd. Quality Assured to BS EN ISO 9001 : 2015  
© Cotswold Archaeology: 2024

Sources: Ordnance Survey, Natural Resource Wales, Isle of Anglesey  
County Council

P:\CR1327 - MON SOLAR - ANGLESEY\GIS\ARC\GISPRO\CR1327 - REVISED\FIGURELAYOUTS.APRX



LEGEND

-  Site Boundary
-  Study Area
-  Cable Route Corridor
-  Highway Works



PROJECT TITLE  
**PROSIECT MAEN HIR**

DRAWING TITLE  
**Llandyfyrdog, Llan'ITre'rbeirdd, Coedana and Llangwyllog Parish Tithe Maps - Maen Hir South B**

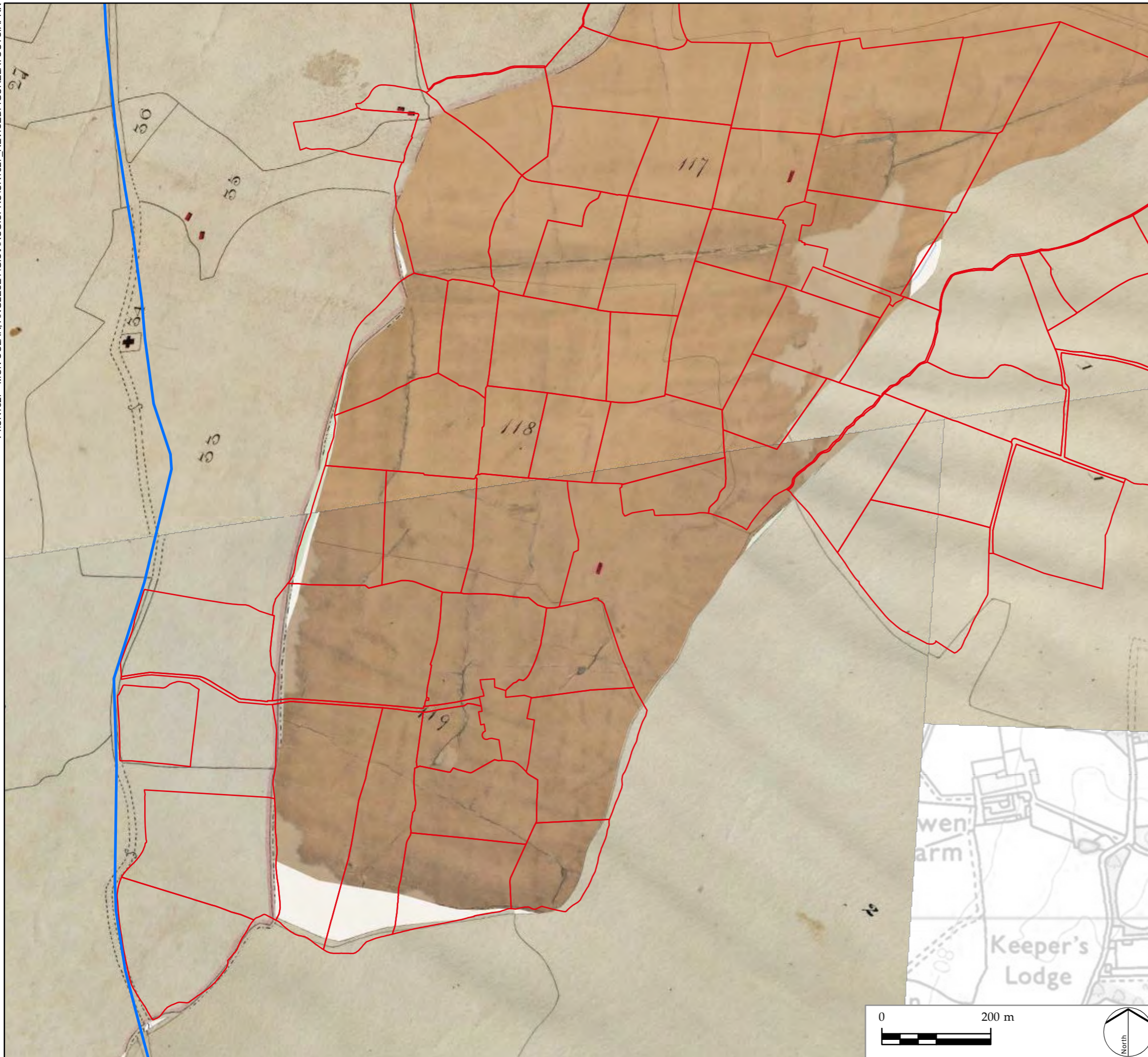
ISSUED BY	Andover	T: 01264 347 630
DATE	09/07/2024	DRAWN DL
SCALE @A3	1:9,000	CHECKED JS
STATUS	Draft	APPROVED JS

**DWG. NO. 33**





No dimensions are to be scaled from this drawing.  
 All dimensions are to be checked on site.  
 Area measurements for indicative purposes only.

© LDA Design Consulting Ltd. Quality Assured to BS EN ISO 9001 : 2015  
 © Cotswold Archaeology: 2024

Sources: Ordnance Survey, Natural Resource Wales, Isle of Anglesey County Council



LEGEND

-  Site Boundary
-  Study Area
-  Cable Route Corridor
-  Highway Works



PROJECT TITLE  
**PROSIECT MAEN HIR**

DRAWING TITLE  
**Llandyfrydog, Llan'ITre'rbeirdd and Llangwyllog  
 Parish Tithe Maps - Maen Hir South B**

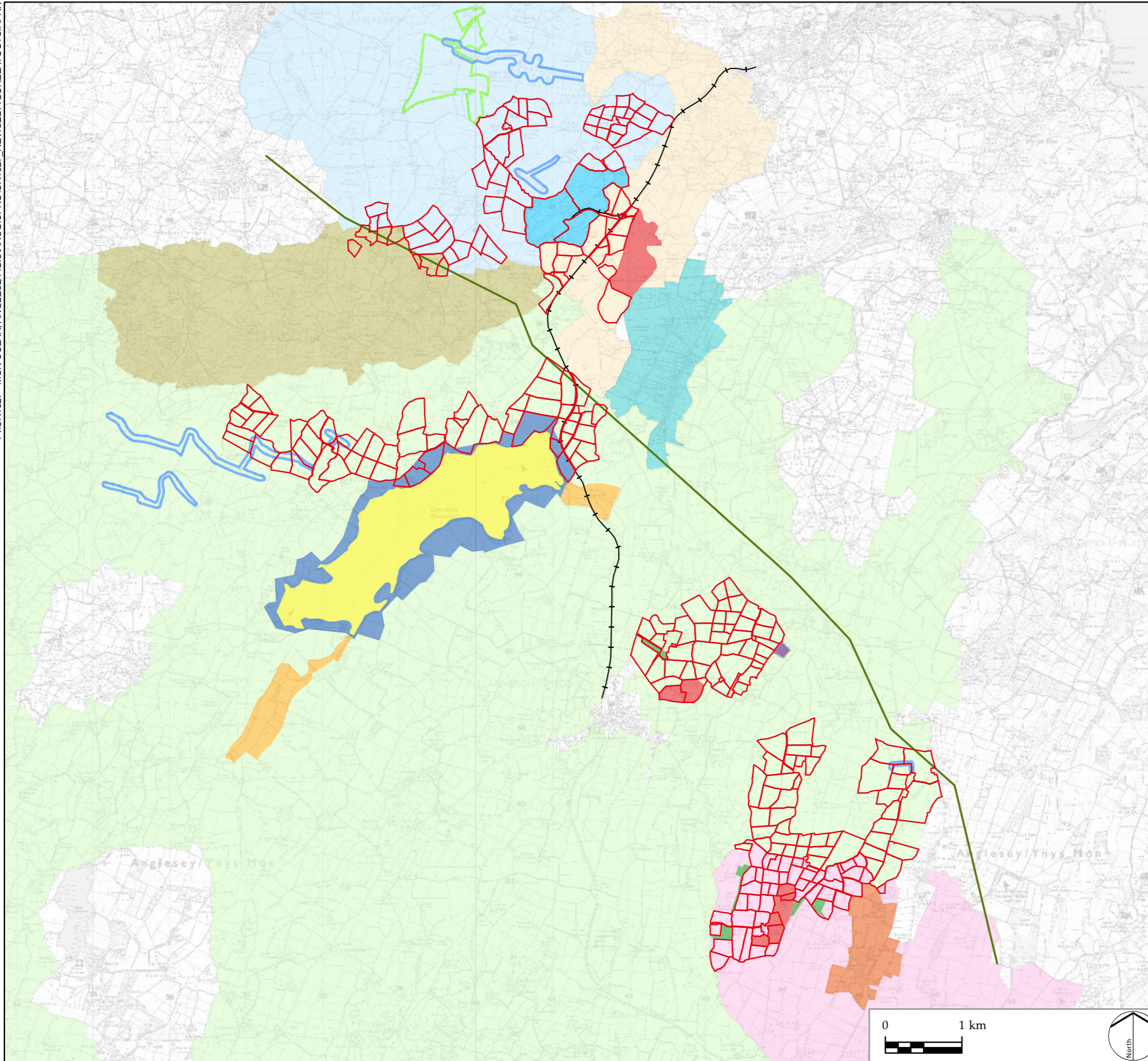
ISSUED BY	Andover	T: 01264 347 630
DATE	09/07/2024	DRAWN DL
SCALE @A3	1:7,000	CHECKED JS
STATUS	Draft	APPROVED JS

**DWG. NO. 34**

No dimensions are to be scaled from this drawing.  
 All dimensions are to be checked on site.  
 Area measurements for indicative purposes only.

© LDA Design Consulting Ltd. Quality Assured to BS EN ISO 9001 : 2015  
 © Cotswold Archaeology: 2024

Sources: Ordnance Survey, Natural Resource Wales, Isle of Anglesey  
 County Council



LEGEND

-  Site Boundary
-  18th/19th Century Agriculture
-  19th Century Parkland
-  19th Century Woodland
-  Reservoir edge
-  Central Eastern Mon, Fieldscape
-  Chicken Farm
-  Drumlin
-  Former Shell Oil Depot
-  Llyn Alaw
-  Penrhyd Lastra, Fieldscape
-  Rhosbeirio, Fieldscape
-  Solar Farm
-  Tre-Ysgawen, Fieldscape
-  Wind Turbines
-  Mynydd Mechell, Fieldscape
-  Floodplain/Managed Wetland
-  Railway Line
-  Powerlines



PROJECT TITLE  
PROSIECT MAEN HIR

DRAWING TITLE  
Historic Landscape Characterisation

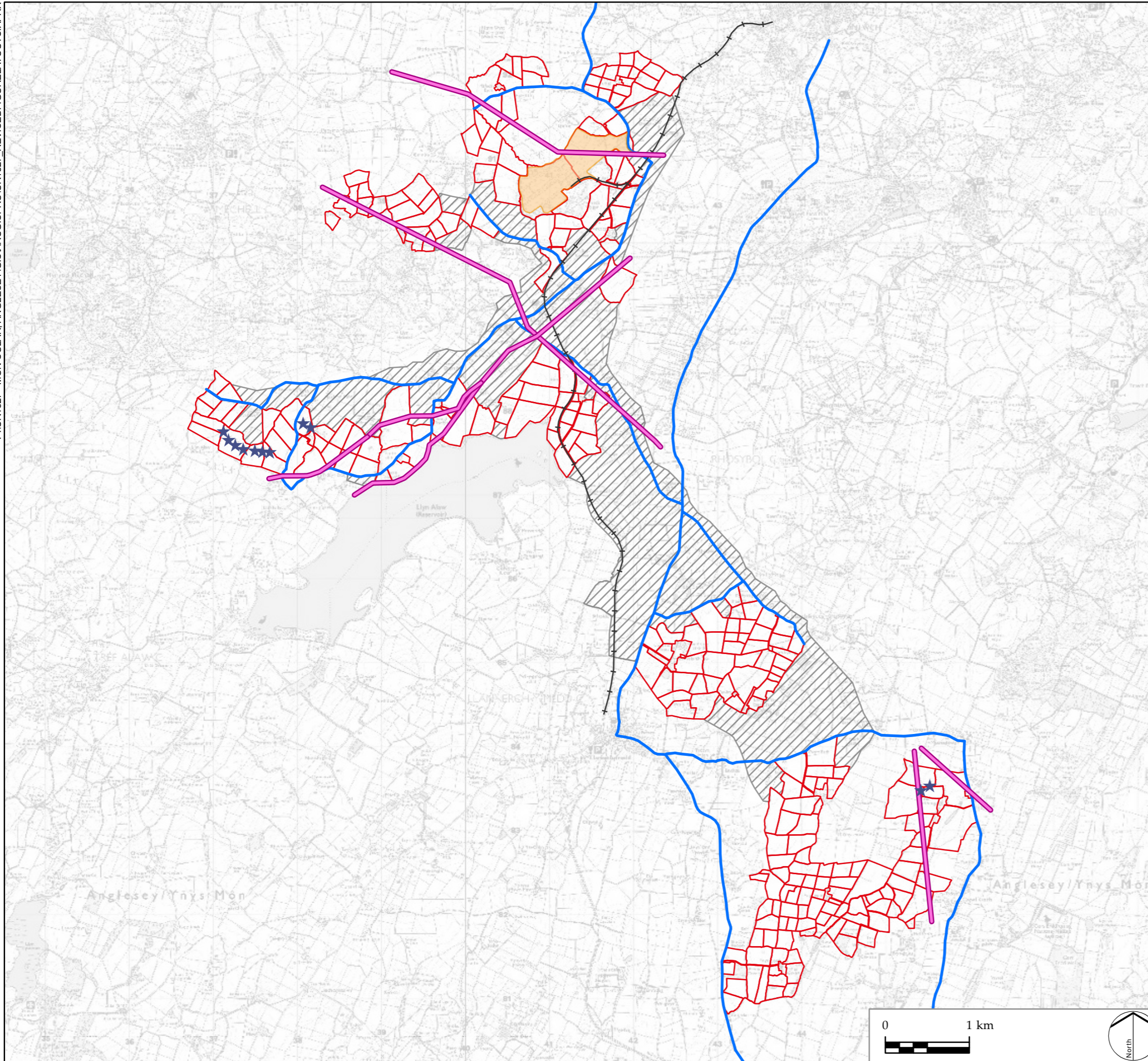
ISSUED BY	Andover	T: 01264 347 630
DATE	25/07/2024	DRAWN DL
SCALE @A3	1:50,000	CHECKED JS
STATUS	Draft	APPROVED JS

**DWG. NO. 41**








No dimensions are to be scaled from this drawing.  
All dimensions are to be checked on site.  
Area measurements for indicative purposes only.

© LDA Design Consulting Ltd. Quality Assured to BS EN ISO 9001 : 2015  
© Cotswold Archaeology: 2024

Sources: Ordnance Survey, Natural Resource Wales, Isle of Anglesey County Council



LEGEND

-  Site Boundary
-  Cable Route Corridor
-  Shell Oil Depot
-  Highway Works
-  Overhead Powerlines
-  Railway Line
-  Wind Turbines



PROJECT TITLE  
**PROSIECT MAEN HIR**

DRAWING TITLE  
**Previous Impacts within the Site**

ISSUED BY	Andover	T: 01264 347 630
DATE	25/07/2024	DRAWN DL
SCALE @A3	1:45,578	CHECKED JS
STATUS	Draft	APPROVED JS

**DWG. NO. 42**

No dimensions are to be scaled from this drawing.  
 All dimensions are to be checked on site.  
 Area measurements for indicative purposes only.

© LDA Design Consulting Ltd. Quality Assured to BS EN ISO 9001 : 2015  
 © Cotswold Archaeology: 2024

Sources: Ordnance Survey, Natural Resource Wales, Isle of Anglesey County Council



---

## ANNEX 6: STEP ONE SETTINGS ASSESSMENT

Asset Ref	Name	Cadw Ref.	Grade	Description	Settings Assessment
D1	Dinas Gynfor Hillfort	AN038	Scheduled Monument	The monument comprises the remains of a promontory fort, which probably dates to the Iron Age period (c.800 BC - AD 43), located c.2.9km to the north of Maen Hir North.	The hillfort setting comprises an important elevated position overlooking the surrounding land and seascape, bounded on three sides by the sea and on the landward side by a steep slope to a marshy valley, running between two inlets of the sea. The ramparts comprise limestone block walls and ditches which define the promontory hillfort. Whilst the asset can be viewed a great distance from the Site, the asset is best experienced up close along public footpaths that run through the middle of the asset. Views from the asset toward Maen Hir North are dominated by multiple large wind turbines. In addition, the newly constructed solar farm near to these wind turbines is negligible within these views. Therefore, there will be no harm to this historic asset from the Project. Asset scoped out of further Stage 2 and 3 assessments.
D2	Lech Golman	3099	Scheduled Monument	The monument comprises the remains of a standing stone 2.7 m high by 1.5 m by 0.9 m, which probably dates to the Bronze Age (c.2300 - 800 BC), located c.10m south and west Maen Hir South B.	Historic Asset scoped into Stage 2 and 3 settings assessment
D3	Maen Addwyn	153	Scheduled Monument	The monument comprises the remains of a standing stone 3m high by 1.1m by 0.9 m, which probably dates to the Bronze Age (c.2300 - 800 BC), located c.70m east of Maen Hir South B.	Historic Asset scoped into Stage 2 and 3 settings assessment
D4.1	Plas Bodewryd	5334	Grade II* Listed	The present house at Plas Bodewryd consists of a late 15th century or early 16th century central block, now of predominantly 18th century character, c.100m to the west of Maen Hir North.	Historic Assets scoped into Stage 2 and 3 settings assessment
	Dovecote at Plas Bodewryd	16575		A late 17th century dovecote forming part of the Plas Bodewryd estate, located c.120m to the east of Maen Hir North.	
D4.2	Church of St Mary	5348	Grade II Listed	The character of the church now owes much to extensive restoration in the late 19th century, although it was listed in the Valuation of Norwich of 1254 and the walls of the church are thought to be medieval, located c.50m to the north of Maen Hir North.	

Asset Ref	Name	Cadw Ref.	Grade	Description	Settings Assessment
	Lychgate at Church of St Mary	25172		The lychgate has no dateable features but is similar in style and build to others on the island; possibly contemporary with the late 19th century restoration of the adjacent church, located c.50m to the north of Maen Hir North.	
D5	Carreg Leidr	AN067	Scheduled Monument	Carreg Leidr comprises the remains of a standing stone located c.280m to the north of Maen Hir South B, which probably dates to the Bronze Age (c.2300 - 800 BC). It is a small stone of red sandstone measuring 1.6m by 0.55m by 0.5m.	Historic Asset scoped into Stage 2 and 3 settings assessment
	Clorach-bach	24831	Grade II Listed	Clorach-bach is a mid-19th century farmhouse built by the Bulkeley estate, dated 1842, located c.20m south of Maen Hir South B.	Both Grade II Listed Buildings are located within enclosed or semi-enclosed farmstead plots surrounded by tall mature vegetation, with associated farm outbuildings and perimeter drystone walling constructed out of similar building materials which forms the important setting for these assets. It is within these enclosed spaces that these assets can be best appreciated and experienced as 19th century farmhouses. Whilst the Site can be glimpsed from these assets, the fields outside of the Site that immediately surround these assets provide an important backdrop and context as farmsteads. Therefore, there will be no harm to these historic assets from the Project. Assets scoped out of further Stage 2 and 3 assessments.
	Clorach-fawr	24830		Clorach-fawr is an early 19th century house and cottage range, a stone inscribed with the date 1826, located c.150m east of Maen Hir South B.	
D6	Bodewryd Standing Stone	AN078	Scheduled Monument	The monument is located to c.130m to the south of Maen Hir North. The monument comprises the remains of a standing stone, which probably dates to the Bronze Age (c.2300 - 800 BC). It measures 4m high by 1.9m by 0.75m.	Historic Asset scoped into Stage 2 and 3 settings assessment
D7	Bodafon Mountain Hut Groups	2357	Scheduled Monument	The monument comprises the remains of a series of round huts that probably date to the Iron Age or Romano-British period (c. 800 BC - AD 400), located c.1.5km to the north-east of Maen Hir South B.	These historic assets are located on eastern side of Mynydd Badafon. Capel Bethesda has a roadside setting fronting onto a lane with a low stone wall forming the front boundary with Mynydd Badafon forming the backdrop. This rural visible location forms the assets important setting and can be best experienced from the front of the asset on the lane. The two Scheduled Monuments are located on the eastern slopes of Mynydd Badafon, whilst they comprise upstanding remains such as hut circles, terraces and boundary walls, which forms these assets crucial rural setting, they are covered by vegetation and
	Bodafon Mountain Early Medieval Homestead	2356		Group consisting of rectangular huts and enclosures, with terraces and boundary walls, probably forming an early medieval residence, located c.1.5km to the	



Asset Ref	Name	Cadw Ref.	Grade	Description	Settings Assessment
	Capel Bethesda	22665	Grade II Listed	<p>north-east of Maen Hir South B.</p> <p>Listed as an unspoilt and dignified rural chapel built in 1897 of a once common type in the agricultural communities of Anglesey, located c.1.8km to the north-east of Maen Hir South B.</p>	not tangible within the landscape. Also, there is a no access to these assets as they are located on private land. As they are located on the eastern side of Mynydd Badafon, they cannot be viewed from the Site. Therefore there will be no harm to these historic assets from the Project. Assets scoped out of further Stage 2 and 3 assessments.
D8	Gwredog	24835	Grade II Listed	Gwredog is an early 19th century gentry house, built c.1830, located c.50m to the south of Maen Hir North. Gwredog is listed as a township in the Extent of Anglesey, 1352.	Historic Asset scoped into Stage 2 and 3 settings assessment
D9	Maen Chwyf	3100	Scheduled Monument	The monument comprises the remains of a chambered tomb, dating to the Neolithic period (c.4,400 BC - 2,900 BC), located <i>within the northern part of Maen Hir South A.</i>	Historic Assets scoped into Stage 2 and 3 settings assessment
	Llys Einion Standing Stone	3102		The monument comprises the remains of a standing stone, which probably dates to the Bronze Age (c.2300 - 800 BC), located c.85m to the north of Maen Hir South A.	
D10	Parys Mountain: Windmill, Engine House, Precipitation Pits and Great Opencast	145	Scheduled Monument	Work began on Parys Mountain copper mine about 1765, though there are traces of prehistoric and Roman mining. Opencast mining ceased about 1800, though underground work continued until about 1880, located c.1.9km to the east of Maen Hir North.	Historic Assets scoped into Stage 2 and 3 settings assessment

Asset Ref	Name	Cadw Ref.	Grade	Description	Settings Assessment
	Mona Mine Kilns and Sublimation Chambers, Mynydd Parys	3672		The monument consists of the remains of calcining kilns dating to the 18th and 19th centuries, located c.2.5km to the east of Maen Hir North. The Mona mine constitutes one of the sites which makes up the Mynydd Parys copper mining complex, the most productive copper mine in the world by the end of the eighteenth century	
	Dyffryn Adda Copper Furnace and Precipitation Ponds	929		The monument consists of the remains of a reverberatory furnace and precipitation pits dating to the 19th century, located c.1.6km to the east of Maen Hir North.	
	Parys Mountain Windmill	5425	Grade II Listed	Late 19th century industrial windmill tower, built by Captain Hughes in 1878 to supplement power from the nearby steam engine operating a mine pump which pumped out water, raised ore and transported miners in the nearby Cairn's shaft, located c.2km to the east of Maen Hir North.	
	Pearl Engine House	23017		Listed as an early 19th century engine house which formed an important component of the industrial copper mining complex at Parys Mountain, located c.2.7km to the east of Maen Hir North.	
	Amlwch and Parys Mountain Registered Historic Landscape (RHL)	HLW (Gw) 1		The 18th and 19th century mining landscape of Parys Mountain, located c.1km to the east of Maen Hir North.	
<b>D11</b>	The Old Rectory	24972	Grade II Listed	An early 20th century rectory, built to accommodate the Rector of the parish of Coedana, located c.50m to the west of Maen Hir South B.	Historic Asset scoped into Stage 2 and 3 settings assessment
<b>D12</b>	Ty Hen Newydd	24974	Grade II Listed	A mid to late 19th century farmhouse, located c.520m to the west of Maen Hir South B.	The Ty Hen Newydd Grade II Listed Buildings are located within a farmstead to the immediate east of the B5111, along an elevated ridge which drops down to the east toward Maen Hir South. The farmhouse is set back from the B5111 with a large well-maintained garden to its front bordered by a slow stone wall and tall mature vegetation along its northern and southern boundaries. Its principal elevation faces west across the road and open fields. The agricultural ranges, boiling house and
	Agricultural range at Ty Hen Newydd	24975		A mid to late 19th century planned farm range, with some late 19th century or early 20th century re-modelling, and late 20th century refurbishment, located c.520m to the west of Maen Hir South B.	

Asset Ref	Name	Cadw Ref.	Grade	Description	Settings Assessment
	Boiling House and wall of the former pigsty range at Ty Hen Newydd	24976		A mid to late 19th century boiling house and lean-to pigsty, located in the centre point of the semi-circle formed by the agricultural range, located c.520m to the west of Maen Hir South B.	pigsty are located to the rear, in between the farmhouse and 20th century barns. The farmstead forms these assets' crucial and important setting. The assets are best appreciated and experienced as a historical farmstead from the B5111. The assets themselves cannot be observed from the Site due to intervening tall mature vegetation and the modern range of barns to the east of the assets. Therefore, there will be no harm to these historic assets from the Project. Assets scoped out of further Stage 2 and 3 assessments.
D13	Capel Peniel and Chapel House	5350	Grade II Listed	An early 19th century chapel and chapel house, located c.990m to the west of Maen Hir South B.	Capel Peniel and Chapel House are located to the immediate east of the B5111 with its principal elevation facing south along the B5111. The asset's setting comprises residential dwellings to the immediate east, dating from the 19th and 20th centuries, a vehicular access and parking area to the immediate south and an in-use cemetery to its immediate north bordered by well-maintained hedgerows. This open roadside setting, along with the cemetery, forms the asset's important and crucial setting. It is from the B5111, cemetery, and the open spaces in front of the asset that allow for it to be best experienced and appreciated as a former chapel. Only the first storey and roof of the asset can be viewed from Maen Hir South; however, the Site does not inform the viewer of the asset's historic usage, nor are the fields that form the Site associated with the asset. Therefore, there will be no harm to this historic asset from the Project. Asset scoped out of further Stage 2 and 3 assessments.

Asset Ref	Name	Cadw Ref.	Grade	Description	Settings Assessment
	Brynkir	24971		A mid-19th century house, located c.1.3km to the west of Maen Hir South B.	The Grade II Listed Brynkir is located on the north-western slope of a hill, set slightly back from the B5111, with a well-maintained front garden bordered by stone walls and a hedgerow, along with vehicular access and an attached building on its eastern side. The small plot and attached outbuilding forms the asset's crucial and important setting. The principal elevation of the asset faces north over the garden and the B5111, which is totally unobscured. It is from the B5111 and the footpath along it where the asset is best experienced as a 19th century dwelling. Due to the asset being located on the fringe of Llanerch-y-medd surrounded by modern development and no views of the Site, there will be no harm to this historic asset from the Project. Asset scoped out of further Stage 2 and 3 assessments.
D14	Cottage, Bachau	24973	Grade II Listed	A probable 18th century cottage, located c.580m to the west of Maen Hir South B.	The Grade II Listed Bachau fronts onto a lane to the immediate north of the asset and a farm track along its western side. It is located within a thin triangular-shaped garden plot which is bordered by tall hedgerows. It this roadside setting that forms the cottage's crucial and important setting. The asset has unobscured views from the road to the immediate north and it's from the road where the asset can be best appreciated as an 18th century cottage. The asset is also situated on the north facing slope of a hill which blocks all views of the asset from the Site. The asset has not historical association with the Site. Therefore, there will be no harm to this historic asset from the Project. Asset scoped out of further Stage 2 and 3 assessments.
D15	Range including cornbarn, granary, threshing room and lofted cowhouse at Llwydiarth Esgob Farm	24836	Grade II* Listed	Early 19th century corn barn, located c.50m to the south of Maen Hir South A.	Historic Assets scoped into Stage 2 and 3 settings assessment
	Range including cowhouse, stables, coach house, smithy and poultry house at Llwydiarth Esgob Farm	24837		Early 19th century and stable range with mid-19th century stable, coach and a smithy, located c.50m to the south of Maen Hir South A.	

Asset Ref	Name	Cadw Ref.	Grade	Description	Settings Assessment
	Range including pigsties, laundry, slaughter house, cartsheds and coalshed at Llwydiarth Esgob Farm	24838		A 19th century agricultural range, built in several phases, located <i>c.50m to the south of Maen Hir South A.</i>	
	Hammels at Llwydiarth Esgob Farm	24839		Hammels and hammel yard built in two stages; the first part is a combination hammel and cartshed, built in the early 19th century, located <i>c.50m to the south of Maen Hir South A.</i>	
	Llwydiarth Esgob Farmhouse	24833	Grade II Listed	An 18th century to early 19th century farmhouse, located <i>c.50m to the south of Maen Hir South A.</i>	
<b>D16</b>	Former Post Office	5391	Grade II Listed	An 18th century cottage, located <i>c.370m to the north of Maen Hir South B.</i>	These historic assets are located as roadside structures fronting onto the crossroads that form the centre of the hamlet of Maenaddwyn. Their principal views all face toward the roads and are unobscured by vegetation or other structures. The assets are not in isolation at the crossroads as further 19th century dwellings are present, as well as dwellings recently constructed in 2021. The hamlet focused on the crossroads forms the assets' crucial and important setting. As all the assets are unobscured by vegetation, other buildings or boundary walls, they can be experienced and appreciated fully from the roads that pass through Maenaddwyn, although at the time of the site visit the Former Post Office and Telephone Box were covered over and in a very dilapidated state. The Site itself can only be glimpsed between the structures of Maenaddwyn and therefore periphery to the assets. Therefore, there will be no harm to these historic assets from the Project. Assets scoped out of further Stage 2 and 3 assessments.
	Ty Newydd	5392		An early 19th century cottage, located <i>c.370m to the north of Maen Hir South B.</i>	
	Telephone Call-Box	5393		K6 type square red kiosk of standard design by Giles Scott architect of London. Design introduced by GPO in 1936, located <i>c.370m to the north of Maen Hir South B.</i>	
<b>D17</b>	Melin Lliidiart	5389	Grade II Listed	Probably one of the oldest surviving windmills on Anglesey, thought to date to mid-18th century. In 2002 the mill was irreparably damaged in a storm and never worked again. Now in use as outbuilding, located <i>c.260m to the east of Maen Hir South B.</i>	Historic Asset scoped into Stage 2 and 3 settings assessment

Asset Ref	Name	Cadw Ref.	Grade	Description	Settings Assessment
D18	Church of St Cwyllog	5394	Grade II* Listed	The Church of St Cwyllog dates to c.1200 that was restored in 1854, located c.1.2km to the south of Maen Hir South B.	The Church of St Cwyllog is situated within an enclosed churchyard bordered on all sides by tall mature vegetation. Bordering to the north of the asset is a large working farmstead, and the asset itself is situated on the downward south facing slope of the Afon Cefni river valley. It is this enclosed churchyard that forms the asset's crucial and important setting. It is from within the enclosed churchyard also that asset can be best appreciated and experienced as a church within a secluded and quiet location. There are no views of the asset from the Site, nor are there any historic associations. Therefore, there will be no harm to this historic asset from the Project. Asset scoped out of further Stage 2 and 3 assessments.
D19	Church of St Michael	5390	Grade II Listed	A medieval church repaired and refitted in 1811 and 1844, located the immediate north of Maen Hir South B. Parts of the walling, and some features such as the north doorway and chancel windows are 14th century.	Historic Asset scoped into Stage 2 and 3 settings assessment
D20	Church of St Tyfrdog	5360	Grade II* Listed	The church is mentioned in the Norwich Taxation of 1254, but the earliest datable fabric here is the nave, built c.1400, located c.350m to the east of Maen Hir South A.	These Grade II Listed Buildings are located within the hamlet of Llandyfrdog. Both the National School and Ty Mawr front onto the road name Lon Leidr with vehicular access and well-maintained garden plots that are bordered by low drystone walling. Their principal elevations also face toward the road. The Church of St Michael is set within its own ovoid churchyard which are bordered by the Grade II Listed low drystone walling. The cluster of Listed Buildings are also surrounded by tall mature trees. This roadside valley setting and their close association with one another forms the Listed Buildings crucial and important setting. As these assets have a roadside setting, they are best experienced from the road and from within the churchyard itself, where they can be best appreciated and experienced together as a small hamlet. The vegetation within the valley also provides a sense of seclusion. In addition, there is no intervisibility between the Site and these assets due to the intervening undulating landscape and vegetation. Therefore, there will be no harm to these historic assets from the Project. Assets scoped out of further Stage 2 and 3 assessments.
	National School	5361	Grade II Listed	An early 19th century school, located c.350m to the east of Maen Hir South A	
	Ty Mawr	5362		A late 18th century or early 19th century farmhouse range, located c.350m to the east of Maen Hir South A	
	Sundial at Church of St Tyfrdog	24827		An 18th century sundial set on a medieval shaft, located c.350m to the east of Maen Hir South A	
	Churchyard wall at Church of St Tyfrdog	24828		Mid-19th century walling, located c.350m to the east of Maen Hir South A	

Asset Ref	Name	Cadw Ref.	Grade	Description	Settings Assessment
	Rectory	23385		Listed as a good early 19th century rectory, with later 19th century remodelling, and a mid-19th century farm range, located <i>c.350m to the east of Maen Hir South A</i>	The Rectory and agricultural range are situated within the hamlet of Llandyfydog. The assets themselves are situated within a large sub-rectangular plot which comprises small pastoral fields and a cluster of trees. The large plot is bordered by tall mature trees and hedgerows. The Rectory's principal elevation faces south toward the agricultural range that is located close by. It is anticipated the asset's setting within this large field plot and their association with one another forms the crucial and important setting. The field plot is forming a semi-enclosed space around these assets, providing a sense of seclusion. It is anticipated that the assets are best experienced and appreciated as a Rectory and associated agricultural outbuildings from within the enclosed spaces in between the two assets that form the yards and access routes. The hamlet itself is located within a valley to the north of Maen Hir South, and there are no views of the assets from the Site. Therefore, there will be no harm to these historic assets from the Project. Asset scoped out of further Stage 2 and 3 assessments.
	Agricultural range at Rectory	23396			
<b>D21</b>	Melin Esgob	24834	Grade II Listed	An early 19th century water-powered corn mill, built on the site of a medieval mill, located <i>c.1.4km to the north-east of Maen Hir South A.</i>	Melin Esgob is located in isolation on the edge of small valley with access to the stream that would have once powered the water mill. The mill itself is sited lower than the nearby road, which it is accessed from via a gated driveway. It is anticipated that its principal elevation that also includes the water wheel faces to the west away from the publicly accessed road. To the south of the mill is an outbuilding which is not on 19th or early 20th century mapping, therefore this is a recent addition that has been constructed in a sympathetic way that compliments the mill. It is from the nearby road that the former watermill can be best appreciated and experienced; however, its principal elevation along with the water wheel cannot be viewed from the road. In addition, there is no intervisibility between the Site and the asset due to the undulating landscape in which the asset is located. Therefore, there will be no harm to this historic asset from the Project. Asset scoped out of further Stage 2 and 3 assessments.

Asset Ref	Name	Cadw Ref.	Grade	Description	Settings Assessment
D22	Tyn y Pwll	24832	Grade II Listed	A mid-19th century house, located c.1.7km to the north-east of Maen Hir South A.	Tyn y Pwll is located within the hamlet of Capel Parc that contains other residential dwellings dating from the 19th and 20th centuries. The asset forms the southern end of a terrace of houses with a principal elevation that faces east over its front garden, road and small field. The front garden is bordered by low stone walls of similar materials used within the asset. This roadside terrace location forms the asset's crucial and important setting. The asset is best experienced and appreciated as a 19th century terrace from the nearby road. In addition, there is no intervisibility between the Site and the asset due to the undulating landscape in which the asset is located. Therefore there will be no harm to this historic asset from the Project. Asset scoped out of further Stage 2 and 3 assessment.
D23	Pen-y-Fynwent Enclosure	147	Scheduled Monument	A pentagonal earthwork enclosure defined by a bank and external ditch, with an entrance causeway on the north-east. It measures about 30m by 30m internally. It has been suggested that it is the site of an early chapel, either Bettws Bwchwdw or Capel Tegeryn, located c.1.4km to the south-east of Maen Hir North.	These two Scheduled Monuments, comprising shallow earthworks, are located on a prominent elevated position, currently within a pastoral field that is bordered on all sides with tall mature hedgerows that is not accessible to the public. Importantly, their immediate setting has already been altered by the presence of two large wind turbines within the eastern adjacent field. These assets are best experienced within their immediate rural setting, where they can be both experienced and appreciated as earthworks associated with settlement and burial. From their elevated positions, there are wide views of the surrounding landscape, which has been altered greatly, for example Parys Mountain is to the north. There are some limited views of the Site, however these are negligible in terms of understanding and experiencing these monuments due to the Site's distance from them. Therefore, there will be no harm to these historic assets from the Project. Assets scoped out of further Stage 2 and 3 assessments.
	Pen-y-Fynwent Barrow	3444		The monument comprises the remains of an earthen built round barrow, which probably date to the Bronze Age (c.2300 - 800 BC), c.1.5km to the south-east of Maen Hir North.	
D24	Church of St Ceidio	5401	Grade II Listed	Situated c.990m to the west of Maen Hir South A. Mid-19th century church, rebuilt in 1845 on old foundations and with the same materials. Retains a late 14th century reset east window and north doorway.	The Church of St Ceidio is located within a small sub-oval churchyard which is formed by a raised platform bordered by stone retaining walls and is accessed via a gate and a footpath from the road to the east. In its wider setting, the church and raised churchyard as a whole are surrounded by a rural landscape in all directions. This wider agricultural land accentuates the rural nature and character of the Church and provides a positive contribution to its significance, due to the distance of the Site this landscape setting will be preserved. As a religious structure, the asset has no direct historical and functional association with the agricultural land which comprises the Site. Therefore there will be no harm to



Asset Ref	Name	Cadw Ref.	Grade	Description	Settings Assessment
					this historic asset from the Project. Asset scoped out of further Stage 2 and 3 assessments.
D25	Church of St Mary	5402	Grade II Listed	Church of St Mary is a 15th century church that was restored in the 19th century, located c.2.2km to the west of Maen Hir South A.	The Church of St Mary is situated on a prominent elevated location overlooking Llyn Alaw to the north-east within an irregular shaped field bordered by mature hedgerows. The church is currently in a ruinous state and located within a rectangular churchyard where the drystone walls have degraded and fallen down. The church can be accessed by a public footpath. It is from within the churchyard that the asset can be best experienced as a former place of worship within a rural prominent location. The asset has wide ranging views from its location and large sections of Maen Hir Central can be viewed, however these views of the Site are negligible as the fields and surrounding landscape do not inform a viewer of its historical significance or alter its function as a public place of worship. Therefore, there will be no harm to this historic asset from the Project. Asset scoped out of further Stage 2 and 3 assessments.
D26	Church of St Pabo	5354	Grade II* Listed	The Church of St Pabo is a medieval rural church, listed in the Norwich Valuation of 1254, with predominantly 12th century walls, 12th century window in south wall and fragments of chevron and weathered faces reset over the south doorway (enlarged probably in early 19th century). It is located c.340m to the south of Maen Hir Central.	Historic Assets scoped into Stage 2 and 3 settings assessment
	Fferam-gyd	24963	Grade II Listed	Fferam-gyd is a late 18th century or early 19th century farmhouse incorporating significant elements of an earlier house located c.70m to the south of Maen Hir Central.	

Asset Ref	Name	Cadw Ref.	Grade	Description	Settings Assessment
<b>D27</b>	Y Stryd	25164	Grade II Listed	A late 18th century or early 19th century pair of cottages, located c.1km to the north of Maen Hir Central.	These Grade II Listed Buildings are located within an elevated but undulating area between Maen Hir North and Central, which is occupied by rocky outcrops. Y Stryd, Ty Newydd and Hen Bont are located within the village of Carreglefn and are a continuous terrace of single storey cottages that borders the road that passes through the village, which comprises their important roadside setting. From the road these three assets can be best experienced and appreciated as 18th century cottages. Pant-y-Cryntach and the Cottage at Pant-y-Gist have a more rural setting closer to Maen Hir North but are located within dips within the landscape. These two assets are also situated within their own garden plots bordered by low stone walls and isolated tall mature trees. Their location set back from the road and within their garden plots forms their important setting. These two assets can be best experienced from the road glimpsed through the vegetation. There is no intervisibility between the three assets within Carreglefn and Site; however, Pant-y-Cryntach and the Cottage at Pant-y-Gist can be partially glimpsed from the Site through vegetation. The Site does, however, not inform a viewer of the historical significance of these assets, and therefore there will be no harm to these historic assets from the Project. Assets scoped out of further Stage 2 and 3 assessments.
	Ty Newydd	25165		A late 18th century or early 19th cottage, located c.1km to the north of Maen Hir Central.	
	Pant-y-Cryntach	25166		A late 18th century or early 19th cottage, located c.540m to the south of Maen Hir North.	
	Cottage at Pant-y-Gist	25176		A late 18th century or early 19th cottage, located c.240m to the south of Maen Hir North.	
	Hen Bont	25177		A late 18th century or early 19th row of two cottages, located c.1km to the north of Maen Hir Central.	
<b>D28</b>	Pen-y-Morwyd Round Barrow	2382	Scheduled Monument	The monument comprises the remains of an earthen round barrow, a burial monument, which probably dates to the Bronze Age (c.2300 - 800 BC), located c.450m to the north of Maen Hir North.	Historic Assets scoped into Stage 2 and 3 settings assessment
	Llifad, Carreglefn	2370		The monument comprises the remains of a nearly square earthwork enclosure, consisting of a ditch between two banks enclosing an area 42m W - E and 39m N - S. It may have been a farmstead or stock enclosure and is probably prehistoric in date, located c.220m to the north of Maen Hir North.	
<b>D29</b>	Church of St Peirio	5349	Grade II Listed	A medieval rural church restored and re-roofed in the late 19th century, located c.980m to the west of Maen Hir North.	Historic Asset scoped into Stage 2 and 3 settings assessment

Asset Ref	Name	Cadw Ref.	Grade	Description	Settings Assessment
D30	Llanfechell Conservation Area		Conservation Area	The Conservation area of Llanfechell with a historic core clustered around the Grade II* Listed Church of St Mechell, with the three Grade II Listed Crown Terrace dwellings dating from the 17th century to 19th century and the Grade II Listed War Memorial, located c.1.6km to the north-west of Maen Hir Central.	The Conservation Area of Llanfechell is located within the river valley of the Afon Meddanen where the landscape rises to the south, north and slightly to the east. These nearby hills form a backdrop for the Conservation area which can be partially glimpsed behind the church. All the Listed buildings are clustered around the small marketplace within the village, and it's from this central position that the Conservation Area and the Listed Buildings can be best experienced and appreciated as the historic core of Llanfechell. There is no intervisibility between the Site and the Conservation Area, and the Site itself is not included within the key views of the Conservation Area. Therefore, there will be no harm to this historic asset from the Project. Asset scoped out of further Stage 2 and 3 assessments.
D31	Twll-y-clawdd	23718	Grade II Listed	Listed as an early 19th century one-and-a-half-storey cottage located c.1.3km to the west of Maen Hir Central, which demonstrates an intermediate phase of cottage development, falling between the lofted cottage of the 18th century and the 2-storey house of the later 19th century, and which retains its vernacular character.	Twll-y-clawdd is located within its garden plot with its east facing principal elevation overlooking its front garden and vehicular access and parking area. The plot's eastern boundary is formed from a mixture of stone walling and an earth bank which is topped with a tall mature hedgerow. Access to the assets is limited to the driveway, and this garden plot forms the asset's important setting. Views of the asset are limited to those obtained from the plot's access point, where the asset can be partially glimpsed from the road. Elsewhere along the road the asset cannot be viewed at all due to the hedgerows. In addition, the asset cannot be viewed from Maen Hir Central, nor does the Site have any historical association with the asset. Within the wide-ranging views of the asset are many large wind turbines which have already altered the landscape. Therefore, there will be no harm to this historic asset from the Project. Asset scoped out of further Stage 2 and 3 assessments.
D32	Church of St Fflewyn	4989	Grade II Listed	A church constructed in the late 18th century, located c.2.1km to the west of Maen Hir Central. Included as a simple rural church built on medieval foundations and retaining the vernacular character of a pre gothic revival church.	The Church of St Fflewyn is located within the farmstead of Llanfflewyn which in turn is located within a small valley flanked to the east and west by hills. The Church is located within its sub-oval churchyard which is bordered by low stone walls and isolated large mature trees. A large working farm comprising a farmhouse and 19th century/20th century barns are located to the immediate north. The churchyard forms the asset's important setting and is best experienced from this churchyard. The surrounding fields do not inform a viewer of its historical significance or alter its function as a public place of worship. Therefore, there will be no harm

Asset Ref	Name	Cadw Ref.	Grade	Description	Settings Assessment
					to this historic asset from the Project. Asset scoped out of further Stage 2 and 3 assessments.
D33	Bethel Hen Methodist Chapel	22985	Grade II Listed	An early 20th century chapel, built in 1905, located c.3.7m to the west of Maen Hir Central.	These four Grade II Listed Buildings are located within the village of Llanrhyddlad. The Methodist Chapel is located within a rectangular plot that fronts onto a road and overlooks the road Lon Las and has residential dwellings either side of the structure. Both the farmhouse and agricultural range are set back from Lon Las within an enclosed working farming complex plot that is bordered by tall mature trees and vegetation. The War Memorial is located within a public setting fronting onto a road and in front of the Llanrhyddlad Board School building. It is this publicly open places and farmstead complexes that form the important settings of these assets within Llanrhyddlad. With the exception of Tyddyn Waen farmstead, the other assets can be best experienced from the nearby roads and public footpaths. The farmhouse and agricultural range are best experienced from within the courtyard spaces of the farm. There is no intervisibility between these assets and the Site due to the undulating landscape and vegetation. Therefore, there will be no harm to these historic assets from the Project. Assets scoped out of further Stage 2 and 3 assessments.
	Tyddyn Waen	22986		A late 18th century to early 19th century farmhouse, located c.3.8km to the west of Maen Hir Central	
	Agricultural range at Tyddyn Waen	22987		An agricultural range built in the late 18th century or early 19th century, located c.3.8km to the west of Maen Hir Central	
	Llanrhyddlad War Memorial	29957		A war memorial erected c.1920 to commemorate those men of Llanrhyddlad who lost their lives in the First World War, located c.4km to the west of Maen Hir Central.	

Asset Ref	Name	Cadw Ref.	Grade	Description	Settings Assessment
D34	Standing Stone 410m North of Church	3104	Scheduled Monument	A standing stone, which probably dates to the Bronze Age (c.2300 - 800 BC), located c.1.8km to the north-west of Maen Hir North. It measures 2.8 m high by 1.6 m by 0.2 m and is aligned north-south. It is leaning to the east.	<p>The standing stone is located within the middle of a pastoral field that is bordered by mature hedgerows and is located next to the route of overhead power lines with tall metal transmission towers nearby. This standing stone is also linked closely associated within the Bodorwedd Standing Stone to the west. It is likely that these monuments are contemporary and share some intervisibility between each other. This rural setting within the middle of a large field allows the asset to be experienced in isolation without being encroached upon by the nearby development of Llanfechell to the south. Two public footpaths that come from the settlement to the south pass the standing stone, allowing for the asset to be experienced also. Whilst there are limited distant views of Maen Hir North, these are negligible, as the Site does not inform a viewer of the significance of the standing stone. Therefore, there will be no harm to this historic asset from the Project. Asset scoped out of further Stage 2 and 3 assessments.</p>
D35	Bodorwedd Standing Stone	416	Scheduled Monument	The monument comprises the remains of three standing stones, which probably date to the Bronze Age (c.2300 - 800 BC), located c.2.3km to the north-west of Maen Hir North. The stones are situated on the top of a low hill in a triangular setting. They are of thin schist and the southern and north-western stones measure 2.05m high, and the north-eastern stone measures 1.08m.	<p>The Bodorwedd Standing Stone are situated on the top of an elevated position overlooking the surrounding landscape, and likely shares some intervisibility with the nearby Standing Stone to its east. The Standing Stone is located within the north-west corner of a square pastoral field and is at a point where two public footpaths cross. It is from this elevated rural location that forms the asset's crucial and important setting. The Bodorwedd Standing Stone is best experienced from the public footpaths as these allow a viewer to be up close with the stones within a rural context, and to potentially understand the relationship with the Standing Stone 410m North of Church. Whilst this elevated position allows for some intervisibility between the asset and Maen Hir North, these long-distance views are negligible, as the Site does not inform a viewer of the significance of the standing stone. Therefore, there will be no harm to this historic asset from the Project. Asset scoped out of further Stage 2 and 3 assessments.</p>

Asset Ref	Name	Cadw Ref.	Grade	Description	Settings Assessment
D36	Cemaes Mill	4979	Grade II Listed	Listed as a good early 19th century windmill tower, located c.2.7km to the north-west of Maen Hir North, retaining much of its original form, openings and character, notwithstanding the new roof and modern lights. Cemaes mill is one of only 18 windmill towers surviving on Anglesey, out of over 40 that were operating in early mid-19th century. One of the last Anglesey windmills to continue operating and of particular historic interest for its connections with the renowned Rowlands family of Anglesey millers.	Cemaes Windmill occupies an elevated position set back from the Ffordd-y-Felin road behind a row of 19th century buildings that front onto the road itself. The windmill occupies a triangular plot that is bordered to the north and south by wall mature trees. The windmill does not have its sails and have been converted into a habitable space. The windmill is located on the north slope of a small hill and can be viewed in all directions except from the south. Whilst the windmill can be viewed at a distance, the plot along with a terrace of 19th century dwellings forms the asset's important setting and is best experienced from the road and from within the inner courtyard. Whilst this elevated position allows for some intervisibility between the asset and Maen Hir North, these long-distance views are negligible, as the Site does not inform a viewer of the significance of the windmill. Therefore, there will be no harm to this historic asset from the Project. Asset scoped out of further Stage 2 and 3 assessments.
D37	Ty Cefn and Cemaes Conservation Area	22900	Grade II Listed	An early 19th century cottage located c.3.1km to the north-west of Maen Hir North. Listed, notwithstanding condition, as a good early 19th century cottage which retains its simple vernacular character, including the use of small roofing slates, and sash windows, and which is a rare survivor of the earlier settlement at Cemaes.	Ty Cefn is located within the centre of the town of Cemaes and fronts onto Glasgoed Road. It is set slightly back from the main High Street that runs through the middle of Cemaes. The asset's position within the centre of the town forms its crucial and important setting. As the asset fronts on Glasgoed Road it be best experienced and appreciated as one of the earliest dwellings within Cemaes. Due to the urban environment, there is no intervisibility between the Site and the asset, nor are there any associations with the Site, therefore there will be no harm to this historic asset from the Project. Asset scoped out of further Stage 2 and 3 assessments.
D38	Corn Mill at Felin Gafnan	22975	Grade II* Listed	A water powered corn mill with one pair of stones located c.4.8km to the north-west of Maen Hir North. Listed at II* as a substantially intact early 19th century watermill, retaining much internal machinery dating from the 1840s, and part of the waterwheel, and which incorporates some unusual features, such as the arrangement of the layshaft drive.	The farmstead of Felin Gafnan is situated within and just outside of the Registered Park and Garden Cestyll within a low-lying dip in the landscape that leads to the Porth-y-Felin. The Grade II Listed Corn Mill is situated within Cestyll and close a bay named Porth Caffnant. All assets are situated in rural locations surrounded by pastoral and arable fields, with a public footpath running past the Listed Buildings and through Cestyll. However, their wider setting has been impacted upon by the presence of the Wylfa Power Station that dominates this part of the Anglesey coastline. It is anticipated that Cestyll and the Listed Buildings are all best experienced within their immediate landscape setting from the public footpath and lane to the south. There is no intervisibility between the Site and these assets, nor are there any associations. Therefore, there will be no harm to these historic assets from the Project. Assets scoped out of further Stage 2 and 3 assessments.
	Corn Drying House at Felin Gafnan	22976	Grade II Listed	Late 18th century former drying house serving the nearby watermill, located c.4.8km to the north-west of Maen Hir North. Listed as a good 18th century corn drying house, which retains much vernacular character, and for group value with the nearby miller's house, and corn mill.	

Asset Ref	Name	Cadw Ref.	Grade	Description	Settings Assessment
	Mill House at Felin Gafnan	22977		Early 19th century miller's house, located c.4.8km to the north-west of Maen Hir North, which forms an important part of the corn mill group at Felin Gafnan and retains traditional character.	
	Cestyll	352	Registered Park and Garden	Registered as an unusual, small and intimate 1920s garden in a scenic coastal location, informally planted with tender plants, which are well suited to its rocky coastal site, located c.4.6km to the north-west of Maen Hir North.	
D39	Melin Cefn Coch	5017	Grade II Listed	Asset included, notwithstanding condition, as the remains of a 18th century windmill tower which, at one time, formed an integral part of the farmstead group which had the house at Cefn Coch at its centre, located c.4.1km to the west of Maen Hir North.	Melin Cefn Coch is situated on a small rocky outcrop to provide additional height to allow for the sails of the former windmill to work. A drystone field boundary passes alongside the windmill. The asset is in a ruinous state with only the lower part of the mill surviving. It is located within a rural context within an irregular shaped pastoral field which is bordered by low fencing and hedgerows. It is within this rural context that that forms the asset's important setting. The asset can be best experienced from the nearby lane to the south-west or the A5025 to the south-east, where views of the windmill are unobscured. There is no intervisibility between the Site and this asset, nor are there any associations between the two. Therefore, there will be no harm to this historic asset from the Project. Asset scoped out of further Stage 2 and 3 assessments.
D40	Cefn Coch	4978	Grade II Listed	Listed as a substantially 17th century gentry house which, notwithstanding alteration to detail, retains strong elements of its original sub medieval vernacular form and character, located c.3.5km to the north-west of Maen Hir Central.	Three Listed farmhouses, two of which (Cefn Coch and Cae Mawr) are still existing working farmsteads. Their complexes comprise a mixture of a 19th and 20th century agricultural buildings and ranges with inner courtyards and vehicular access. It is these farmsteads that forms these assets' important settings. Llanddygfael-groes is situated within a small garden plot set back a little from a lane. It is in isolation and likely overlooks the surrounding agricultural landscape. It is this rural garden plot that forms the asset's important setting as a dwelling. These assets can be best experienced from within the working courtyards of the farmsteads and from nearby lanes, where the historical and architectural qualities can be enjoyed. There are some minor distant views of these assets from Maen Hir North however these are negligible. The Site does not contribute to the significance of these assets nor are there any associations, therefore there will be no harm to these historic assets from the Project. Assets scoped out of further Stage 2 and 3 assessments.
	Cae Mawr	23716		Listed as a well-preserved 18th century farmhouse, retaining its vernacular character and many original features such as the windows, located c.3.2km to the north-west of Maen Hir Central.	
	Llanddygfael-groes	23717		Listed as a well-preserved late 18th century/early 19th century two-storey farmhouse, retaining its vernacular character in scale and layout and use of materials, located c.2.8km to the north-west of Maen Hir Central.	

Asset Ref	Name	Cadw Ref.	Grade	Description	Settings Assessment
D41	Pen-yr-Orsedd Standing Stone	2371	Scheduled Monument	The monument comprises the remains of two standing stones, which probably date to the Bronze Age (c.2300 - 800 BC), located c.4.1km to the west of Maen Hir Central.	The two standing stones are located in isolation within pastoral fields that are bordered by low mature hedgerows, occupying elevated positions within the landscape allowing the monuments to be viewed in all directions. These standing stones are also closely associated with one another and can be easily viewed from one another as well. This rural setting within large pastoral fields allows these assets to be experienced in isolation without being encroached upon by any modern development. There are no public footpaths near to the two standing stones, but both areas easily viewed and best experienced from the nearby roads. There are no views of the Site from these assets and the Site does not inform a viewer of the significance of the standing stone. Therefore, there will be no harm to this historic asset from the Project. Asset scoped out of further Stage 2 and 3 assessments.
	Castell Crwn	3083		The monument comprises the remains of a well-preserved castle-ringwork, which dates to the medieval period (c.AD 1066 - 1485), located c.4.4km to the north-west of Maen Hir Central. The monument comprises the remains of a circular earthwork comprising a bank, external ditch and remains of a counterscarp bank, with an internal diameter of 24-25m.	Castell Crwn occupies a low circular mound that is topped with small to medium sized bushes and trees and an isolated and rural context, which makes it difficult to perceive within the landscape. The monument also is bisected by a field boundary which runs through the asset. The asset is not publicly accessible. The asset is best experienced from the nearby road. There is no intervisibility between the asset and the Site, nor are there any historic associations. Therefore, there will be no harm to this historic asset from the Project. Asset scoped out of further Stage 2 and 3 assessments.
D42	Church of St Mary	5011	Grade I Listed	Listed as a fine rural parish church, incorporating significant early Medieval fabric, including a 12th century chancel arch, and with good late Medieval additions, including a fine 16th century arcaded chapel, located c.4.9km to the north-west of Maen Hir Central.	The Grade I and Grade II Listed Church of St Mary, Lychgate and Old Rectory are located within the village of Llanfairynghornwy with their respective boundaries of a garden plot and churchyard, which are bordered by tall mature trees. It is from within the churchyard, garden plot and the nearby road that these assets can be best experienced. There is no intervisibility between these assets and the Site, nor are there any historic associations. Therefore, there will be no harm to these historic assets from the Project. Assets scoped out of further Stage 2 and 3 assessments.
	Lychgate at Church of St Mary	22981	Grade II Listed	Asset included as a well-detailed rural lychgate of characteristic local type which forms a group with the adjacent Church of St Mary, located c.4.9km to the north-west of Maen Hir Central.	
	Old Rectory	22982		Listed as an early 19th century rectory, which retains unusually good and complete internal detailing, and which in the mid-19th century was home to Frances Williams, founder of the Lifeboat Service in north Wales, located c.5km to the north-west of Maen Hir Central.	



Asset Ref	Name	Cadw Ref.	Grade	Description	Settings Assessment
D43	Church of St Padrig	4990	Grade II Listed	Listed as a simple rural medieval church retaining much of its early fabric and vernacular character, located c.3.6km to the north-west of Maen Hir North.	The Church of St Padrig is located on a prominent coastal position within an irregular shaped churchyard, overlooking the sea to the north and Porth Padrig to the south. To its immediate south are a series of 19th and 20th century residential dwellings and walled car parking space. The asset is best experienced from within its churchyard and the surrounding coastal landscape which allow for wide expansive views of the church. There is no intervisibility between the asset and the Site, nor are there any historic associations. Therefore, there will be no harm to this historic asset from the Project. Asset scoped out of further Stage 2 and 3 assessments.
D44	Porth Wen Brickworks	2381	Scheduled Monument	The monument comprises a remarkably intact example of an early 20th century silica brickworks and associated quarries and harbour located in a spectacular coastal setting on a low promontory on the western side of Porth Wen Bay, located c.2.3km to the north of Maen Hir North.	The Porth Wen Brickworks are situated on the western slopes and side of the bay Porth Wen, within an isolated and rural location. No other industrial works are situated near to the former brickworks. It is from within the ruins of the brickworks and the sheltered bay that the asset can be best experienced. There is no intervisibility between the asset and the Site, nor are there any historic associations. Therefore, there will be no harm to this historic asset from the Project. Asset scoped out of further Stage 2 and 3 assessments.
D45	Black Lion Inn	23350	Grade II Listed	Listed as a traditional inn, retaining good 19th century vernacular character notwithstanding alteration to detail. Part of a good, terraced row, located c.4.9km to the west of Maen Hir Central.	The historic assets Black Lion Inn, Siop Soar and Capel Soar Standing Stone are located on top of a small hill to the immediate east of the A5025, with their garden plots and open field. All three assets are easily viewed and are best experienced from the nearby road. There is no intervisibility between these assets and the Site, nor are there any historic associations. Therefore, there will be no harm to these historic assets from the Project. Assets scoped out of further Stage 2 and 3 assessments.
	Siop Soar	23370		Listed as a distinctive terraced row retaining good 19th century vernacular character notwithstanding some alteration to detail, located c.4.9km to the west of Maen Hir Central.	
	Capel Soar Standing Stone	2372	Scheduled Monument	The monument comprises the remains of a standing stone, which probably dates to the Bronze Age (c.2300 - 800 BC), located c.5km to the west of Maen Hir Central.	
D46	Glan-Alaw Standing Stone	3108	Scheduled Monument	The monument comprises the remains of a standing stone, which probably dates to the Bronze Age (c.2300 - 800 BC), located c.1.7km to the south-west of Maen Hir Central. The stone measures approximately 2.7m high by 0.6m wide.	The Glan-Alaw Standing Stone is situated on the southern edge of a prominent rise overlooking the low-lying landscape of the Afon Alaw to the south and is likely associated with three other Scheduled Monuments to its south. The standing stone is located within a rural context an open pasture field, which is not accessible to the public. There is no intervisibility between the asset and the Site, nor are there any historic associations. Therefore, there will be no harm to this historic asset from the Project. Asset scoped out of further Stage 2 and 3 assessments.

Asset Ref	Name	Cadw Ref.	Grade	Description	Settings Assessment
D47	Cors-y-Bol Round Barrow	2375	Scheduled Monument	The monument comprises the remains of a barrow, probably dating to the Bronze Age (c.2300 BC - 800 BC), located c.2.7km to the south of Maen Hir Central.	The Cors-y-Bol Round Barrow is situated within a low-lying pastoral area on the edge of a marshy floodplain of a stream that flows into the Llyn Alaw. The asset is likely associated with a bearny cairn, standing stone and hillfort. The rural isolated location forms the assets important and crucial setting. There is only limited intervisibility between the asset and the Site, nor are there any historic associations. Therefore, there will be no harm to this historic asset from the Project. Asset scoped out of further Stage 2 and 3 assessments.
D48	Y Werthyr Hillfort	1248	Scheduled Monument	The monument comprises the remains of a small hillfort, which probably dates to the Iron Age period (c.800 BC - AD 74, the Roman conquest of Wales), located c.3.1km to the south of Maen Hir Central.	Both these Scheduled Monuments are located within open pastoral fields, with the cairn located within a low-lying position within the valley of the Afon Alaw, and the hillfort located atop a prominent position overlooking the surrounding landscape in all directions. These monuments are likely associated with one another, along with possible associations with a nearby round barrow and standing stone. It is this location that forms their crucial and important setting. These assets can be best experienced at a distance from a nearby public footpath that bisects the two. There is no intervisibility between the Site and the Bedd Branwen Round Cairn, however Y Werthyr Hillfort can be viewed from the Site. The surrounding landscape is not a preserved prehistoric landscape contemporary with the hillfort, but rather a post-medieval/modern agricultural landscape dotted with farmsteads and villages. The alteration of the Site for a solar farm will not impact upon the wider setting of these assets or compete with the hillfort's prominent hilltop position. Therefore, there will be no harm to this historic asset from the Project. Assets scoped out of further Stage 2 and 3 assessments.
	Bedd Branwen Round Cairn	3109		The monument comprises the remains a burial cairn, probably dating to the Bronze Age (c.2300 - 800 BC), located c.2.8km to the south of Maen Hir Central.	
D49	Pont Hafren	4965	Grade II Listed	Asset included as a good, well-preserved, 18th century road bridge, located c.4.1km to the south-west of Maen Hir Central.	These Listed Buildings are located within a low-lying area within the river valley of the Alan Alaw, all of which except for the church are adjacent a road and are situated within their own private garden plots bordered by hedgerows, trees and fencing forming their immediate and important setting. These assets are best experienced from public rights of way, i.e. the roads nearby and from within their associated churchyards. There is no intervisibility between these assets and the Site, nor are there any historic associations. Therefore, there will be no harm to these historic assets from the Project. Assets scoped out of further Stage 2 and 3 assessments.
	Pont Henbont	4936		Asset included as a good, well-preserved, 18th century road bridge, located c.3.4km to the south-west of Maen Hir Central.	
	Church of St Afran, St Ieuan and St Sannan	4955	Grade II* Listed	Listed as a good rural church of medieval vernacular character, retaining early fabric (and sympathetic restoration) and good 18th century interior fittings, located c.4.2km to the south-west of Maen Hir Central.	

Asset Ref	Name	Cadw Ref.	Grade	Description	Settings Assessment
	Glan Hafren	4956	Grade II Listed	Listed as a good 18th century house which, notwithstanding some modernisation, retains its vernacular character, located c.4.1km to the south-west of Maen Hir Central.	
	Former Smithy at Glan Hafren	4957		Asset included, notwithstanding condition, as a good 18th century smithy which retains vernacular character and forms a group with the adjacent Glan Hafren and road bridge, Pont Hafren, located c.4.1km to the south-west of Maen Hir Central.	
	Melyn Hywell	4958	Grade II* Listed	Listed as a good 18th century water powered cornmill which has immense vernacular character and is of particular importance as it represents an example of a rapidly disappearing building type once common in the rural landscape. Melyn Hywel is the only working watermill remaining on Anglesey, located c.3.9km to the south-west of Maen Hir Central.	
	Tyn Cae Elim	23515	Grade II Listed	Listed as a late 18th century or early 19th century cottage which, notwithstanding modernisation, retains its vernacular character, located c.3.3km to the south-west of Maen Hir Central.	
	Schoolroom and stable range at Elim Chapel	23516		Listed as a good mid-19th century schoolroom and stable range which retains a strong rural vernacular character and many original features, located c.3.4km to the south-west of Maen Hir Central.	
<b>D50</b>	Melin Llynon	4918	Grade II* Listed	Listed as a complete and well-preserved windmill tower, located c.4.3km to the south-west of Maen Hir Central, which, since restoration is the only working windmill on the island out of over 40 which were in operation in the mid-19th century	Both Listed Buildings are located on a small hill within an irregular shaped plot that is currently in use as working museum and tourist destination. The windmill still has its sails but is not in active use, and Ty'r Felin is in use as the museum's gift shop. The plot is bordered on all sides by tall hedgerows and mature trees, which provides a sense of seclusion within landscape. These assets are best experience within their immediate setting in order to understand them as two

Asset Ref	Name	Cadw Ref.	Grade	Description	Settings Assessment
	Ty'r Felin	23514	Grade II Listed	Listed as a well-preserved mid-19th century farmhouse, retaining its vernacular character and some original detail, located c.4.3km to the south-west of Maen Hir Central.	agricultural buildings. There is no intervisibility between these assets and the Site, nor are there any historic associations. Therefore, there will be no harm to these historic assets from the Project. Assets scoped out of further Stage 2 and 3 assessments.
D51	Llynon Hall	4934	Grade II Listed	Listed as a good, well-preserved, Georgian style gentry house which retains all the character and fine detailing of the early 19th century remodelling, located c.4.6km to the south-west of Maen Hir Central.	All three Grade II Listed Buildings are located within an isolated rural area. Llynon Hall is situated within the middle of a small, wooded area surrounded by gardens, the Lodge is set adjacent to the nearby road and would have been the grounds keeper's dwelling to the Hall. Bodwigan and the range are situated to the west of the Hall within its small garden plot bordered by mature hedgerows. These rural wooded areas form the assets' crucial and important setting. There is no intervisibility between these assets and the Site, nor are there any historic associations. Therefore, there will be no harm to these historic assets from the Project. Assets scoped out of further Stage 2 and 3 assessments.
	Bodwigan and attached agricultural range	23517		Listed as an excellent early 18th century farmstead group of immense vernacular character, located c.4.8km to the south-west of Maen Hir Central.	
	Lodge at Llynon Hall	23518		Listed as a good early 19th century gatehouse or lodge which was built contemporary with the remodelling of the adjacent Llynon Hall, located c.4.4km to the south-west of Maen Hir Central.	
D52	Gronant	23027	Grade II* Listed	Listed as an important sub-medieval vernacular house dating to the 16th century, of the 'hearth-passage' plan (with the fireplace backing on the entry), a house type not previously recorded on Anglesey, located c.4.9km to the south-west of Maen Hir Central.	All Listed Buildings form part of central house and its accompanying service and agricultural buildings of a post-medieval farming estate, which is still a current working farmstead. All assets are located within a sub-rectangular plot bordered on all sides by tall mature trees and hedgerows and open fields in all directions. It is this confined plot that forms the assets' crucial and important setting as an historic farmstead. It is also from within the farmstead and its courtyards and gardens that these assets are best appreciated and experienced as an historic farmstead as well. There is no intervisibility between these assets and the Site, nor are there any historic associations. Therefore, there will be no harm to these historic assets from the Project. Assets scoped out of further Stage 2 and 3 assessments.
	Wellhouse, Gronant	23036	Grade II Listed	Listed as an early 19th century wellhouse in picturesque style, prominently located at the entrance to the farmstead, and forming an important part of the farm group at Gronant, located c.4.9km to the south-west of Maen Hir Central.	
	Watermill, Gronant	23366		Listed as an unusual, picturesque farm mill dating to the early 19th century, smaller than the typical Anglesey corn mills, the surviving examples of which were generally built to serve the community rather than the individual farm, located c.4.9km to the south-west of Maen Hir Central.	

Asset Ref	Name	Cadw Ref.	Grade	Description	Settings Assessment
	Hammels and hammel yard walls, Gronant	23367		Listed as a good mid-19th century hammel range with intact hammel yard wall, which forms an important part of the farmyard group at Gronant, located c.4.9km to the south-west of Maen Hir Central.	
	Cartshed, Gronant	23368		Listed as a good mid-19th century cartshed (notwithstanding loss of original roof covering), which together with the corn barn and hammels form an important part of the farmyard group at Gronant, located c.4.9km to the south-west of Maen Hir Central.	
	Cornbarn, Gronant	23369		Listed as a good mid-late traditional C18 corn barn range, which retains much local vernacular character, and together with the corn barn and hammels form an important part of the farmyard group at Gronant, located c.4.9km to the south-west of Maen Hir Central.	
<b>D53</b>	Church of St Mary	5003	Grade II Listed	Listed as a good mid-19th century church which retains fabric of an early church within the west tower which is one of the few early west towers on the island, located c.680m to the south-west of Maen Hir South A.	The Church of St Mary and its Lychgate are located within the centre of the village of Llannerch-y-medd within their rectangular shaped churchyard, which is bordered to the east, south and west and tall mature trees and to the north by a residential building. The churchyard forms the assets' crucial and important setting as a public place of worship within an urban environment. The assets are therefore best appreciated and experienced from within the churchyard. There is no intervisibility between these assets and the Site, nor are there any historic associations. Therefore, there will be no harm to these historic assets from the Project. Assets scoped out of further Stage 2 and 3 assessments.
	Lychgate to Church of St Mary	23519		Listed as a good mid-19th century lychgate, of an unusual style and scale for Anglesey and which forms a group with the adjacent Church of St Mary.	
<b>D54</b>	Melin Geirn and attached agricultural ranges	4939	Grade II Listed	Listed as an unusual 18th century windmill tower and farm building complex, located c.4.8km to the south-west of Maen Hir South A.	Melin Geirn comprising the ruined tower of a former windmill along with nearby ranges within the centre of a working modern farmstead. It is abutted to then north by modern barns and a modern dwelling nearby. The former windmill's immediate setting has been heavily altered over time, but nonetheless forms the asset's important setting along with the agricultural ranges. The assets are best experienced from within the courtyards/open spaces within the farmstead. There is no intervisibility between these assets and the Site, nor are there any historic associations. Therefore, there will be no harm to these historic assets from the Project. Asset scoped out of further Stage 2 and 3 assessments.

Asset Ref	Name	Cadw Ref.	Grade	Description	Settings Assessment
D55	Church of St Cynfarwy	5024	Grade II Listed	Listed as a simple, rural church of medieval origins. Retains medieval fabric and some 17th century features but is largely of 19th century character, located c.4.9km to the west of Maen Hir South B.	The Church of St Cynfarwy is located within in a rural context within a rectangular churchyard which has dotted large mature trees along its boundaries. Located to the north and south of the church are modern dwellings. The churchyard with its stone walled boundaries forms the asset's crucial and important setting that a public place of worship. There is no intervisibility between this asset and the Site, nor are there any historic associations. Therefore, there will be no harm to this historic asset from the Project. Asset scoped out of further Stage 2 and 3 assessments.
D56	Tre'r Ddol	4980	Grade II* Listed	Listed as a well-preserved 17th century gentry house which retains much of its character with the retention of the fenestration, located c.3.9km to the west of Maen Hir South B.	Tre'r Ddol is located within a modern working farmstead in an isolated rural location, reached by private trackway leading north of a country road west of Llechcynfarwy. It is the working farmstead plot that forms the asset's crucial and important setting in order to understand it as farmhouse. North of the barns and around the Listed Building are many large mature trees which effectively block all views of the house from the country road. It is from the within the farmstead, and the courtyards and open spaces that the asset can be best appreciated and experienced as a farmhouse. There is no intervisibility between this asset and the Site, nor are there any historic associations. Therefore, there will be no harm to this historic asset from the Project. Asset scoped out of further Stage 2 and 3 assessments.
D57	Sherry	23120	Grade II Listed	Listed as a good lower gentry farmhouse of 17th century origin and traditional 19th century character externally, located c.2.9km to the west of Maen Hir South B.	Sherry is located within a modern working farmstead, with the working farm buildings and courtyards to its immediate north and north-west, and a well-maintained garden to its south-east. Its principal elevation faces south-east over the garden and the road Lon Cefn. The garden is bounded by a low stone wall. The working farmstead and plot forms the asset's important setting in understanding it as farmhouse. The asset is best experienced and appreciated from the nearby road. There is no intervisibility between this asset and the Site, nor are there any historic associations. Therefore, there will be no harm to this historic asset from the Project. Asset scoped out of further Stage 2 and 3 assessments.

Asset Ref	Name	Cadw Ref.	Grade	Description	Settings Assessment
D58	Melin Newydd	5022	Grade II Listed	Listed as a good example of an early-mid 19th century windmill tower, retaining the original planned form, openings, and character, located c.4.1km to the west of Maen Hir South B.	Melin Newydd is a former windmill that has been converted into a residential dwelling with the sails removed. It is located within the centre of an open field plot with a vehicle access to a small number of residential buildings and a modern barn to its immediate south. The tower has been painted white and forms a prominent building within the landscape. It is this rural plot along with nearby buildings that complement the windmill that forms its important setting as an agricultural structure. The asset is best experienced from the nearby country road. There is no intervisibility between this asset and the Site, nor are there any historic associations. Therefore, there will be no harm to this historic asset from the Project. Asset scoped out of further Stage 2 and 3 assessments.
D59	Church of St Trygarn	4937	Grade II Listed	Listed as a rural 13th century church of the simple traditional type, characteristic of Anglesey, located c.5km to the west of Maen Hir South B.	The Church of St Trygarn is located within an isolated and rural location, within a sub-square churchyard that is bounded by low stone walls and sporadic mature trees and bushes. The church is accessed via a country lane from the north that ends within a tarmacked car parking area to its east. It is this rural location within its churchyard that forms the assets crucial and important setting as a public place of worship. The asset can be best experienced and appreciated from within its churchyard and routes of access. There is no intervisibility between this asset and the Site, nor are there any historic associations. Therefore, there will be no harm to this historic asset from the Project. Asset scoped out of further Stage 2 and 3 assessments.
D60	Gwyndy Bach	4938	Grade II Listed	Listed as a good late 18th century house which retains a strong vernacular character, located c.4.1km to the west of Maen Hir South B.	Gwyndy Bach Slightly is set back from, and at angle to, the west side of the B5109, north-west of Glan-yr-afon. The asset is in a prominent roadside position near to a school. The asset is located within its own garden plot, which is bordered by low stone walls, with its principal elevation facing south-east over the garden. The plot contains tall mature trees. This immediate roadside plot forms the asset's crucial and important setting and is best experienced as a historic dwelling from the nearby B5109. There is no intervisibility between this asset and the Site, nor are there any historic associations. Therefore, there will be no harm to this historic asset from the Project. Asset scoped out of further Stage 2 and 3 assessments.

Asset Ref	Name	Cadw Ref.	Grade	Description	Settings Assessment
D61	Church of St Twrog	4930	Grade II* Listed	Listed as a good rural 15th century church with a simple traditional character retaining many original features, located c.4.4km to the south-west of Maen Hir South B.	The Church of St Twrog is located within an isolated and rural location atop a rise within the landscape, within a sub-rectangular churchyard that is bounded by low stone walls and no vegetation. The church is accessed via a country lane that runs along its south-eastern boundary. It is this rural location within its churchyard that forms the assets crucial and important setting as a public place of worship. The asset can be best experienced and appreciated from within its churchyard and routes of access. There is no intervisibility between this asset and the Site, nor are there any historic associations. Therefore, there will be no harm to this historic asset from the Project. Asset scoped out of further Stage 2 and 3 assessments.
D62	Ty Gwyn	29722	Grade II Listed	Listed as a well-preserved 18th century roadside cottage which retains a strong vernacular character and original features, such as fenestration, located c.2.3km to the south-west of Maen Hir South B.	Ty Gwyn is located within a rural roadside location within a small triangular plot with its principal elevation facing west over the overgrown front garden and country lane. The asset is in a dilapidated state and not habited, with its gardens all overgrown and medium sized trees bordering it to the east. This small roadside plot forms the asset's important setting as a small rural 18th century dwelling. The asset is best experienced and appreciated from the nearby country lane. There is no intervisibility between this asset and the Site, nor are there any historic associations. Therefore, there will be no harm to this historic asset from the Project. Asset scoped out of further Stage 2 and 3 assessments.
D63	Church of St Caian	5403	Grade II* Listed	Listed as an excellent 14th century rural church which retains a strong simple character in the retention of many early features and its original plan, with structurally undivided nave and chancel, located c.1.8km to the south-east of Maen Hir South B.	The Listed Buildings at Tregayan all form part of the Plas Tregayan country estate, and its associated service and agricultural buildings, bridges and ornamental gates. The assets are located within a large well maintained garden plot that are bordered by small blocks of woodland and tall mature trees lining the lanes that pass through the estate. To the north-west of Plas Tregayan is an ornamental garden bordered by hedgerows. It is this enclosed plot that forms the important and crucial setting of these assets which helps inform and understand the workings of an 18th/19th century gentry estate. These assets are best experienced from the nearby country roads to the west and east and from within the open gardens and courtyards within the estate. The Church of St Caian is located to the immediate west of the Plas Tregayan country estate. The church is located within a square-shaped churchyard set back from a nearby country road. The churchyard is bordered by low stone walls and few mature trees. The churchyard forms the asset's important setting as a public place of worship. The church is best experienced from within the churchyard and nearby road where views are not unobscured. There is no intervisibility between these assets and the Site, nor are there any historic associations. Therefore, there will be no harm to these historic assets from the
	Gatepiers at Upper Lodge entrance to Plas Tregayan	25238	Grade II Listed	Asset included as a pair of 19th century gatepiers which forms an important component part of the estate at Plas Tregayan, located c.1.8km to the south-east of Maen Hir South B.	
	Gatepiers to church path Plas Tregayan	25246		Asset included as a pair of 19th century gatepiers which forms an important component part of the estate at Plas Tregayan, located c.1.8km to the south-east of Maen Hir South B.	
	Plas Tregayan	5029		Listed as a gentry house of 18th century character, but which retains important features of an earlier 17th century house within its fabric, located c.2.1km to the south-east of Maen Hir South B.	



Asset Ref	Name	Cadw Ref.	Grade	Description	Settings Assessment
	Garage/coach house range at Plas Tregayan	25235		Asset included, notwithstanding alterations and change of use, as a 19th century coach house which forms an important component part of the estate buildings at Plas Tregayan, located c.2.1km to the south-east of Maen Hir South B.	Project. Assets scoped out of further Stage 2 and 3 assessments.
	Barn at Plas Tregayan	25236		Asset included as an exceptionally well-preserved 19th century threshing barn which forms an important component part of the estate buildings at Plas Tregayan, located c.2.1km to the south-east of Maen Hir South B.	
	Stable range at Plas Tregayan	25237		Asset included as a 19th century stable range which forms an important component part of the estate buildings at Plas Tregayan, located c.2.1km to the south-east of Maen Hir South B.	
	Gatepiers at Upper Lodge driveway to Plas Tregayan	25244		Asset included as a pair of 19th century gatepiers which forms an important component part of the estate at Plas Tregayan, located c.2.1km to the south-east of Maen Hir South B	
	Gatepiers to main driveway at Plas Tregayan	25245		Asset included as a pair of 19th century gatepiers which forms an important component part of the estate at Plas Tregayan, located c.2.1km to the south-east of Maen Hir South B	
	Bridge at Plas Tregayan	25239		Asset included as a good 19th century road bridge which forms an important component part of the estate at Plas Tregayan, located c.2.5km to the south-east of Maen Hir South B.	
	Gatepiers at Lower Lodge entrance to Plas Tregayan	25243		Asset included as a pair of 19th century gatepiers which forms an important component part of the estate at Plas Tregayan, located c.2.7km of the south-east of Maen Hir South B.	

Asset Ref	Name	Cadw Ref.	Grade	Description	Settings Assessment
D64	Melin Frogwy	28663	Grade II Listed	Listed as a good early 19th century windmill tower, retaining the original planned form, openings and character, located c.3.6km to the south of Maen Hir South B.	Melin Frogwy is located within an isolated rural context and a slight rise in the landscape to the immediate south of the Llyn Frogwy that forms part of the course of the Afon Cefni. A residential building is located to the immediate south of the windmill and is accessed by a private lane from the south. The windmill has been converted into a residential building and does not retain its sails. The tower has been painted white and is therefore a prominent landmark. The small river valley/lakeside location is also containing tall mature trees and forms the asset's crucial and important setting. Whilst the asset cannot be accessed up close, it can be viewed from the south from the elevated of the B5109. There is no intervisibility between this asset and the Site, nor are there any historic associations. Therefore, there will be no harm to this historic asset from the Project. Asset scoped out of further Stage 2 and 3 assessments.
D65	Church of St Llwydian	4932	Grade II Listed	Listed as a good mid-19th century rural church, with a strong vernacular character gained by the retention of the 14th century plan and much of the medieval fabric and architectural features, located c.4.8km to the south of Maen Hir South B.	The Church of St Llwydian is set back from the road Llangefni within a sub-rectangular churchyard which is bordered by a stone wall on all sides, and the to the west, north and east by tall mature trees. The churchyard forms the assets' important setting as a public place of worship, and the assets are best experience and appreciated from within the churchyard and the Llangefni. Bryn Hyfryd is a farmhouse located within an existing working farmstead that is surrounded by barn, agricultural ranges, and enclosed to the south by a garden plot bordered by tall mature trees. This plot forms the asset's important setting as a farmhouse within a working farmstead and is best experienced from within the open spaces and garden plot of the farmstead. There is no intervisibility between these assets and the Site, nor are there any historic associations. Therefore, there will be no harm to these historic assets from the Project. Asset scoped out of further Stage 2 and 3 assessments.
	Churchyard wall and gateways, church of St Llwydian	23118		Listed as a good vernacular rural churchyard wall which includes 2 well-detailed entrances, one with a 15th century doorway, located c.4.8km to the south of Maen Hir South B.	
	Bryn Hyfryd	23119		Listed as a good 19th century rectory of Georgian character, retaining original detail including fenestration of the main range, located c.4.4km to the south of Maen Hir South B.	
D66	Ty Moel	19859	Grade II Listed	Listed as a good example of an early 19th century farmhouse retaining much of its original vernacular character, located c.5km to the south of Maen Hir South B.	Both Listed Buildings are farmhouses, one located within an existing working farmstead and the other as a residential dwelling as the farm went out of existence. Ty Moel is set within a working farmstead, which forms the asset's important setting which includes agricultural buildings. Rhyd y Spardyn Blas is not within a working farmstead, but its plot comprises outbuildings not too dissimilar to

Asset Ref	Name	Cadw Ref.	Grade	Description	Settings Assessment
	Rhyd y Spardyn Blas	29857		Listed for its special architectural interest as a well-preserved small farmhouse of the 17th century displaying characteristic vernacular features typical of Anglesey buildings of this type and period, located c.4.6km to the south of Maen Hir South B.	agricultural buildings. This small complex of buildings within an irregular shaped garden and vehicular plot forms the asset's important setting. Those assets are set back away from country roads, and is best experienced from these roads, as well as from within the open spaces in between the courtyards and garden plots. There is no intervisibility between these assets and the Site, nor are there any historic associations. Therefore, there will be no harm to these historic assets from the Project. Assets scoped out of further Stage 2 and 3 assessments.
D67	Melin Llanddyfnan aka Pen y Fan	25234	Grade II Listed	Listed as a substantially intact 18th century windmill tower, one of only 18 surviving on Anglesey, located c.4.6km to the south-east of Maen Hir South B.	Melin Llanddyfnan is located on an elevated location set back from the south-east side of a country road leading to Llanbedrgoch from the B5110 out of Llangefni. The asset is within the grounds of and c.500mm north-west of Plas Llanddyfnan, which is in an isolated rural location, set back within private grounds. Melin Llanddyfnan is not a working windmill and has been converted into a residential dwelling with a modern extension on its north-western side, along with additional modern dwellings around it. Whilst the asset has been impacted upon it can still be appreciated as a former windmill. Plas Llanddyfnan and the Stable Range are located within a well-maintained garden plot surrounded by woodland, and a small man-made lake. It is from within this important enclosed rural setting that the two assets can be best experienced. There is no intervisibility between these assets and the Site, nor are there any historic associations. Therefore, there will be no harm to these historic assets from the Project. Assets scoped out of further Stage 2 and 3 assessments.
	Plas Llanddyfnan	4972		Listed as an excellent example of an 18th century gentry house which retains all the character and fine detailing of the 18th century remodelling, as well as some features of the original 16th century house, located c.5km to the south-east of Maen Hir South B.	
	Lofted stable range at Plas Llanddyfnan	26728		Asset included as a well detailed early 19th century lofted stable range which displays a character consistent with a small estate, located c.5km to the south-east of Maen Hir South B.	
D68	Penllyn	25241	Grade II Listed	Listed as a good early 19th century farmhouse which retains many features, including the original fenestration, and its original vernacular character, located c.3.8km to the south-east of Maen Hir South B.	Penllyn is located within an isolated rural location set back from the west side of a narrow country lane which leads north from the road between Talwrn and Llanbedrgoch. It is set within a small number of irregular shaped field plots that are lined with tall mature trees and hedgerows, forming the asset's garden plot. Outbuildings are positioned to the west of the asset. This rural location forms the asset's important setting as dwelling and is best experienced up close from within these nearby fields. There is no intervisibility between this asset and the Site, nor are there any historic associations. Therefore, there will be no harm to this historic asset from the Project. Asset scoped out of further Stage 2 and 3 assessments.

Asset Ref	Name	Cadw Ref.	Grade	Description	Settings Assessment
D69	Tyddyn Traian	24661	Grade II Listed	Listed as a well-preserved 18th/19th century cottage which retains a strong vernacular character, and which retains the original linear plan, typical of many small farmstead groups on the island, located c.3km to the south-east of Maen Hir South B.	Two Listed Buildings that are residential in character. Nant Uchaf is a small derelict cottage located with a working farmstead that comprises a large barn and other modern outbuildings set within a rural context. The cottage also includes a square stone walled garden which is part of the asset's curtilage. Tyddyn Traian is set back from the B5110 and comprises two residential dwellings that have small garden plots to the rear and a large, tarmacked area to the front. Agricultural buildings are situated to the immediate south of the asset. Its principal elevation faces south-east toward the B5110. The immediate agricultural rural plots form the assets' important setting, and both are best experienced in proximity within the open spaces in front of them. There is no intervisibility between these assets and the Site, nor are there any historic associations. Therefore, there will be no harm to these historic assets from the Project. Assets scoped out of further Stage 2 and 3 assessments.
	Nant Uchaf	25165		Listed as a good, substantial vernacular early 19th century farmhouse still in the Georgian tradition, located c.2.4km to the south-east of Maen Hir South B.	
D70	Bettws	25403	Grade II Listed	Listed as a good early 19th century estate farmhouse which forms a coherent group with the adjacent agricultural range, located c.4.9km to the south-east of Maen Hir South B.	Bettws and the Agricultural range are set back from a country road set within a small former farmstead plot. Bettws's principal elevation faces south-east over a small field toward the road, and the Agricultural range, currently in use as a stable, are located to the immediate north of the house. The plot is bordered by a low stone wall which is accessed from a driveway from the road. This small rural farmstead location forms the assets' important setting. The assets are best experienced from the nearby road, and from within the courtyard between them. There is no intervisibility between these assets and the Site, nor are there any historic associations. Therefore, there will be no harm to these historic assets from the Project. Assets scoped out of further Stage 2 and 3 assessments.
	Agricultural range at Bettws	25404		Listed as a good early 19th century agricultural range which forms a coherent group with the adjacent farmhouse, located c.4.9km to the south-east of Maen Hir South B.	
D71	Melin Rhosfawr	5009	Grade II Listed	Listed as a substantially intact windmill tower built in 1757, one of only 18 surviving on Anglesey, located c.3.6km to the east of Maen Hir South B.	Melin Rhosfawr comprises the ruined tower of a former windmill located within the north-eastern area of the village of Brynteg. The asset is not located within a working agricultural context, but rather a triangular plot with a residential dwelling to its immediate south-east. The asset can be accessed via a short section of lane from the B5110. The plot forms the asset's important setting and can be best experienced up close within the garden plot of the dwelling, and at a distance from the nearby B5110. There is no intervisibility between this asset and the Site, nor are there any historic associations. Therefore, there will be no harm to this historic asset from the Project. Asset scoped out of further Stage 2 and 3 assessments.

Asset Ref	Name	Cadw Ref.	Grade	Description	Settings Assessment
D72	Church of St Mary	5007	Grade II* Listed	Listed as a good rural 14th century church retaining substantial medieval fabric, located c.4.6km to the east of Maen Hir South B.	The Church of St Mary is located within an isolated and rural location surrounded by irregular long thin fields bordered by tall mature trees, within an irregular shaped churchyard that is bounded by low stone walls. The church is accessed via a country lane that runs along its western boundary. It is this rural location within its churchyard that forms the assets crucial and important setting as a public place of worship. The asset can be best experienced and appreciated from within its churchyard and routes of access. There is no intervisibility between this asset and the Site, nor are there any historic associations. Therefore, there will be no harm to this historic asset from the Project. Asset scoped out of further Stage 2 and 3 assessments.
	Pant-y-Saer Burial Chamber	3074	Scheduled Monument	The monument comprises the remains of a chambered tomb, dating to the Neolithic period (c.4,400 BC - 2,900 BC), located c.4.9km to the east of Maen Hir South B.	The Pant-y-Saer Burial Chamber is situated on a slight rise within the landscape to the west of Benllech. It is situated in an area that is moorland in character with small to medium sizes bushes, which in turn is surrounded by modern development. This rural moorland-like landscape forms the asset's crucial and important setting and is not encroached upon by modern development from Benllech. The asset is best experienced up close. There is no intervisibility between this asset and the Site, nor are there any historic associations. Therefore, there will be no harm to this historic asset from the Project. Asset scoped out of further Stage 2 and 3 assessments.
D73	Church of St Eugrad	5004	Grade II* Listed	Listed as a simple rural church (characteristic of the island) of substantial 12th century in character and fabric, located c.3.6km to the east of Maen Hir South B.	The Church of St Eugrad is located within an isolated and rural location surrounded by dense woodland, within an irregular shaped churchyard that is bounded by low stone walls. The church is accessed via a country lane that approaches the asset from the east. It is this rural isolated location within its churchyard that forms the asset's crucial and important setting as a public place of worship. The asset can be best experienced and appreciated from within its churchyard and routes of access. There is no intervisibility between this asset and the Site, nor are there any historic associations. Therefore, there will be no harm to this historic asset from the Project. Asset scoped out of further Stage 2 and 3 assessments.

Asset Ref	Name	Cadw Ref.	Grade	Description	Settings Assessment
	Parciau Dovecote	5005		Listed as an exceptionally well detailed and well-preserved 17th century dovecote, located c.3.7km to the east of Maen Hir South B.	Parciau Dovecote is within an isolated rural on the southern edge of an irregular shaped field that is bordered by woodland. It is also located on a slight rise within the field, therefore placed on a prominent position. It is this rural pastoral field that forms the asset's important setting. The asset can only be viewed and best experienced from the nearby country lane to the north. There is no intervisibility between this asset and the Site, nor are there any historic associations. Therefore, there will be no harm to this historic asset from the Project. Asset scoped out of further Stage 2 and 3 assessments.
D74	Church of St Michael	5025	Grade II* Listed	Listed as a 14th century church retaining early fabric; well-restored by Henry Kennedy, keeping its simple rural character, located c.3.1km to the north-east of Maen Hir South B.	The Church of St Michael is located within a rural location surrounded by small fields bordered with mature trees and hedgerows and isolate residential dwelling, within an irregular shaped churchyard that is bordered by tall mature trees and hedgerows. The church is accessed via a country lane that approaches the asset from the north-west. It is this rural isolated location within its churchyard that forms the asset's crucial and important setting as a public place of worship. The asset can be best experienced and appreciated from within its churchyard and routes of access. There is no intervisibility between this asset and the Site, nor are there any historic associations. Therefore, there will be no harm to this historic asset from the Project. Asset scoped out of further Stage 2 and 3 assessments.
	Plas Bodafon	4981	Grade II Listed	Listed as a significant 16th century gentry house with some good early detail, located c.2.6km to the north-east of Maen Hir South B.	Plas Bodafon is within a rural location that forms part of a large estate. Surrounding the house are many outbuildings, ranges and service structures, some of which are centred around a large square courtyard. The house and these associated structures are surrounded by well-maintained gardens with many sporadic tall mature trees. Plas Bodofan is set back from a nearby country road and is accessed by a long driveway from the west. The asset is best experienced close up within the spaces formed by the gardens and courtyards of the estate. Plas Bodafon Standing Stone is situated within the grounds of Plas Bodafon within the centre of dense woodland. This wooded area forms the stone's immediate setting and is best experienced within the woodland itself. There is no intervisibility between these assets and the Site, nor are there any historic associations. Therefore, there will be no harm to these historic assets from the Project. Assets scoped out of further Stage 2 and 3 assessments.
	Plas Bodafon Standing Stone	3997	Scheduled Monument	The monument comprises a fine standing stone, probably dating to the Bronze Age (c.2300 BC - 800 BC) and situated within woodland on the lower east-facing slopes of Mynydd Bodafon, located c.2.5km to the north-east of Maen Hir South B.	

Asset Ref	Name	Cadw Ref.	Grade	Description	Settings Assessment
D75	Efail Bach	24743	Grade II Listed	Listed as a good early 19th century labourer's cottage which retains its simple plan and vernacular character, located c.3.8km to the north-east of Maen Hir South B.	Efail Bach and Bodafon Isaf and its associated Listed Buildings are located along the B5025. Efail Bach has a roadside setting and located within a small garden plot. Whilst its principal elevation faces away from the road, the asset can be clearly viewed from the road. It is this unobscured location that forms its important setting. Bodaon Isaf and its associated Listed Buildings are located within existing working farmstead which also includes modern barns and outbuildings. The working farmstead forms the assets important setting to understand them as agricultural structures, and therefore best experienced from within the farming complex. here is no intervisibility between these assets and the Site, nor are there any historic associations. Therefore, there will be no harm to these historic assets from the Project. Assets scoped out of further Stage 2 and 3 assessments.
	Bodafon Isaf and attached agricultural range	24746		Listed as a modest estate farm, with good 18th century character in the farmhouse and a well preserved attached agricultural range of vernacular character, located c.3.7km to the north-east of Maen Hir South B.	
	Lofted cartshed and cowhouse range at Bodafon Isaf	24747		Asset included as a component part of the farmstead group at Bodafon Isaf, located c.3.7km to the north-east of Maen Hir South B.	
	Morris Brothers Memorial	25818		Listed, notwithstanding John Morris' participation in the slave trade as a well detailed early 20th century Celtic style memorial cross significant for commemorating the Morris Brothers, located c.3.9km to the north-east of Maen Hir South B.	
D76	Boston Well	24745	Grade II Listed	Listed as an unusual mid-19th century curative well in a strongly designed well-house of military Gothic character, located c.3.5km to the north-east of Maen Hir South B.	The Boston Well is located along the eastern edge of a pastoral field, with the Afon Lligwy to the west. The well is almost surrounded by tall mature trees providing a secluded area. A public footpath runs past the well and therefore allows for the asset to be experienced and appreciated up close. There is no intervisibility between this asset and the Site, nor are there any historic associations. Therefore, there will be no harm to this historic asset from the Project. Asset scoped out of further Stage 2 and 3 assessments.
	Bwlch-y-Dafarn Enclosed Hut Group	409	Scheduled Monument	The monument probably dates to the Iron Age or Romano-British period (c.800 BC - AD 400) and comprises the remains of a rectangular enclosure with traces of at least one round hut and several oblong buildings within, there may also be traces of activity	The two Scheduled Monument are located close to one another amongst dense woodland. The hut group is located upon an elevation position away from the low wetland to the north-west where the Burnt Mounds are situated. It is likely these Scheduled Monuments are associated with one another as they are potentially contemporary. The wooded rural location forms the assets' important and crucial

Asset Ref	Name	Cadw Ref.	Grade	Description	Settings Assessment
	Coed Newydd Boiling Mounds and Smelting Hearth	3112		<p>beyond the enclosure wall, located c.3.8km to the north-east of Maen Hir South B.</p> <p>The monument consists of the remains of three burnt mounds, probably dating to the Bronze Age (c.2,300 BC - 800 BC) and an iron smithing site thought to date to the Romano-British period (AD 43-400). All lie on low-lying ground beside a small tributary of the Afon Lligwy, located c.3.6km to the north-east of Maen Hir South B.</p>	<p>setting in order to understand them as prehistoric monuments. They are best experienced up close. There is no intervisibility between this asset and the Site, nor are there any historic associations. Therefore, there will be no harm to this historic asset from the Project. Assets scoped out of further Stage 2 and 3 assessments.</p>
D77	Parciau Hillfort	3087	Scheduled Monument	<p>The monument comprises the remains of an inland promontory fort, which probably dates to the Iron Age (c.800 BC - AD 74, the Roman conquest of Wales), located c.3.5km to the north-east of Maen Hir South B. It is situated on the end of a limestone spur and is naturally defended on the north and north-west sides by steep cliffs and on the east by a steep grass bank. The interior of the fort is occupied by a large number of hut foundations.</p>	<p>Parciau Hillfort and the Caerhoslligwy Enclosed Hut Groups are situated upon prominent positions within the landscape. The Hut Groups are located on the northern slope of a hill used for pasture and contains many rocky outcrops, overlooking the river valley of the Afon Lligwy within a rural context. The hut groups are likely associated with multiple hut groups within the landscape. This isolated rural location from the asset's important setting. Parciau Hillfort occupies an elevated location where it dominates the surrounding landscape and can viewed predominately from the north-west, north and north-east. The monument however is surrounded by a large caravan park to its north-west, north and north-east, and a large working farm to the south. The hillfort is also bordered to the north and east by tall mature trees. The asset is best experienced close up where the earthworks and hut foundations can be best experienced. There is no intervisibility between these assets and the Site, nor are there any historic associations. Therefore, there will be no harm to these historic assets from the Project. Assets scoped out of further Stage 2 and 3 assessments.</p>
	Caerhoslligwy Enclosed Hut Groups	410		<p>The monument comprises the remains of two enclosed groups of hut circles 125 m apart on a limestone ridge, located c.3.5km to the north-east of Maen Hir South B. They probably date from the first millennium BC.</p>	
D78	Church of St Allgo	4986	Grade II Listed	<p>Listed as a rural church with strong Perpendicular character which retains some late 15th century features, located c.4.4km to the north-east of Maen Hir South B.</p>	<p>All three Listed Buildings are on roadside locations. Tyn-y-Llan is a residential dwelling within a sub-square garden plot that is bordered by a low stone wall. Its principal elevation faces east over the garden and the B5052. The Church is and Monument are located within a sun-rectangular churchyard which is also bordered by a low stone wall and contains sporadic large trees. These assets are best experienced from within their respective plots. There is no intervisibility between these assets and the Site, nor are there any historic associations. Therefore, there will be no harm to these historic assets from the Project. Asset scoped out of further Stage 2 and 3 assessments.</p>
	Tyn-y-Llan including attached outbuilding range	4987		<p>Listed as a well-preserved early 18th century house and outbuilding range which retains a good vernacular character and forms a group with the nearby church of St Allgo, located c.4.4km to the north-east of Maen Hir South B.</p>	



Asset Ref	Name	Cadw Ref.	Grade	Description	Settings Assessment
	Royal Charter Memorial	24744		Asset included as a mid to late 19th century memorial to a particularly remarked local shipwreck, the loss of the Royal Charter, a testimony to the maritime history of Anglesey, located c.4.4km to the north-east of Maen Hir South B.	
	Bryn Moel	25164		Listed as a good and little altered 19th century estate labourer's cottage, which retains its simple plan and characteristic estate detailing, located c.4.7km to the north-east of Maen Hir South B.	Bryn Moel is on a roadside location within a small sub-square plot that is bordered by a low stone wall. The principal elevation faces north away from the road. The asset is in a derelict state, along with a derelict outbuilding to its east. This small plot forms the asset's important setting and is best experienced from the open spaces within the plot and from the country lane to the south. There is no intervisibility between this asset and the Site, nor are there any historic associations. Therefore, there will be no harm to this historic asset from the Project. Asset scoped out of further Stage 2 and 3 assessments.
	Marian Glas Hut Group	2376		The monument comprises the remains of an extensive group of round and rectangular huts that probably date to the Iron Age or Romano-British period (c.800 BC - AD 400), located c.4.3km to the north-east of Maen Hir South B.	The two Scheduled Monuments are located on the eastern slopes below Parciau Hillfort. The Marian Glas Hut Group is completely covered over by a caravan park with tarmacked access routes. The asset has been negatively impacted upon by this modern development. The Hut Group north of Glan'r Afon is situated within an area of dense woodland within a rural location, which forms the asset's important setting. These monuments are likely associated with the nearby hillfort and multiple settlement sites. There is no intervisibility between these assets and the Site, nor are there any historic associations. Therefore, there will be no harm to these historic assets from the Project. Assets scoped out of further Stage 2 and 3 assessments.
	Hut Group north of Glan'r Afon	185	Scheduled Monument	The monument comprises the remains of a complex of structures that probably date to the Iron Age or Romano-British period (c.800 BC - AD 400), including at least one well preserved hut-circle and two sections of linear walling, located c.4.4km to the north-east of Maen Hir South B.	
	Ffynnon Allgo			The monument consists of the remains of a holy well, possessing religious or otherwise ritualistic significance, probably dating to the medieval or post-medieval period, and located c.4.4km north-east of Maen Hir South B.	The well takes the form of a rectangular, sunken tank with paving beside it and walling around; a projecting middle level on the long sides may have been seating. There is an outflow from the north-west corner, via which the water joins the stream a short distance away. There is no intervisibility between this asset and the Site, nor are there any historic associations. Therefore, there will be no harm to this historic asset from the Project. Asset scoped out of further Stage 2 and 3 assessments.

Asset Ref	Name	Cadw Ref.	Grade	Description	Settings Assessment
D79	Capel Lligwy	4982 and 3093	Grade II Listed and Scheduled Monument	Despite its ruinous condition, the chapel is important as a substantially 12th century structure, with some architectural detail surviving from this early period, together with 14th century work and an unusual 16th century vaulted south chapel, located c.4.7km to the north-east of Maen Hir South B.	The Scheduled Monuments and the Chapel are located along an elevated ridge with the valley of the Afon Lligwy to the north-west. The Din Lligwy Ancient Village and the Parc Salmon Hut Group are located within dense woodland, which likely would not have been present during their time of occupation. The woodland blocks all views of the assets and are only best experienced up close. Nonetheless, their wooded rural location forms their important setting, away from modern development. Capel Lligwy and Lligwy Burial Chamber are both set within open rural pastoral fields that have not been encroached upon by modern development. Wider views from these assets comprise isolated farmsteads and modern caravan parks. These open rural pastoral fields form these assets' important and crucial setting in order for them to be understood as a prehistoric burial chamber and a rural church. There is no intervisibility between these assets and the Site, nor are there any historic associations. Therefore, there will be no harm to these historic assets from the Project. Assets scoped out of further Stage 2 and 3 assessments.
	Din Lligwy Ancient Village	157	Scheduled Monument	The monument consists of several enclosed hut circles, the foundations of round houses probably dating to the Bronze Age or Iron Age (c.2300 BC - AD 74), located c.4.4km to the north-east of Maen Hir South B.	
	Parc Salmon Hut Group	408		The monument comprises the remains of an isolated hut circle that probably dates to the Iron Age or Romano-British period (c.800 BC - AD 400), located c.4.8km to the north-east of Maen Hir South B.	
	Lligwy Burial Chamber	3076		This monument comprises the remains of a burial chamber probably dating to the Neolithic, located c.4.8km to the north-east of Maen Hir South B. Situated on a level limestone plateau, the burial chamber lies 1.5km from the coast.	
D80	Capel Mwd and attached cottage	5334	Grade II Listed	Listed as an early, and isolated rural chapel built in 1786, unusual on Anglesey for its remote location, located c.2.1km to the east of Maen Hir Central.	Capel Mwd and attached cottage are situated in an isolated rural location within a rectangular plot bordered by a mixture of hedgerows and medium sized hedgerows. The assets are in a derelict state and the churchyard is completely overgrown. The churchyard forms the assets important setting as a public place of worship and is best experienced from within the churchyard as well. There is no intervisibility between this asset and the Site, nor are there any historic associations. Therefore, there will be no harm to this historic asset from the Project. Asset scoped out of further Stage 2 and 3 assessments.

Asset Ref	Name	Cadw Ref.	Grade	Description	Settings Assessment
D81	Parc Mawr	23015	Grade II Listed	Listed as a good mid-19th century vernacular farmhouse, which retains much local character, located c.2.3km to the east of Maen Hir North.	Parc Mawr is farmhouse located within an existing working farmstead with modern barns and workings areas its west and north. Access is afforded to the asset from the south from the A5025. The farmstead forms the asset's important setting in terms of understanding it as a farmhouse. The asset is best appreciated and experienced from the open yards from within the farmstead, and from the A5052. There are limited distant views of the asset from the Site, although they are negligible, nor are there any historic associations. Therefore, there will be no harm to this historic asset from the Project. Asset scoped out of further Stage 2 and 3 assessments.
D82	Capel Bozrah	24542	Grade II Listed	Listed as a well-preserved simple rural mid-19th century chapel, school room, stores and railings retaining a contemporary interior of consistent character and forming part of a coherent group of related buildings, located c.3.5km to the east of Maen Hir North.	The Church and its associated Listed Buildings are situated on the north-western fringe of the village of Pen-y-sarn within an irregular shaped plot. The assets are all facing or focused upon the nearby road that runs past the assets to the north. This clustered location forms the assets' crucial and important setting as a group of 19th century buildings. There is no intervisibility between these assets and the Site, nor are there any historic associations. Therefore, there will be no harm to these historic assets from the Project. Assets scoped out of further Stage 2 and 3 assessments.
	Ty Capel Bozrah	23101			
	School Room and Store at Capel Bozrah	23102			
	Railings to yard at Capel Bozrah	23103			
D83	End Cottage adjoining Mynydd Adda	23116	Grade II Listed	Listed as a good late 18th century or early 19th century cottage which retains its vernacular character, located c.4.4km to the east of Maen Hir North.	End Cottage adjoining Mynydd Adda fronts onto the nearby country road with its principal elevation facing south over the road. The asset is situated within a square-shaped plot with a small section of stone wall bordering the plot along the road, and a vehicle access to the rear. Both the asset and the stone wall have been rendered and pebble dashed. Along the road to the east are modern dwellings. The small garden plot forms the asset's important setting and is best appreciated from the country road. There is no intervisibility between this asset and the Site, nor are there any historic associations. Therefore, there will be no harm to this historic asset from the Project. Asset scoped out of further Stage 2 and 3 assessments.
D84	Henblas and attached outbuildings	5319	Grade II Listed	Listed as a good 17th century farmhouse range which, notwithstanding some alterations, retains its vernacular character in overall form and use of materials, located c.4.1km to the east of Maen Hir North.	These Listed Buildings are located on the lower lying coastal areas of northern Anglesey, comprising a church along with associated Listed structures, a Rectory and its Listed associated structures, a school and chapel, a farmhouse set within an existing working farm, and residential dwellings. These assets have a roadside setting or are set back from nearby roads. They are located within their own garden plots or churchyard, bordered by low stone walls. Their garden plots, churchyards and roadside locations for their important and crucial settings. There is no intervisibility between these assets and the Site, nor are
	Shiloh Chapel and schoolroom	23117		Listed as an essentially early 19th century chapel, retaining good early character; the later 19th century schoolroom forms part of the group, located	

Asset Ref	Name	Cadw Ref.	Grade	Description	Settings Assessment
				c.4.1km to the east of Maen Hir North.	there any historic associations. Therefore, there will be no harm to these historic assets from the Project. Assets scoped out of further Stage 2 and 3 assessments.
	Rectory	23106			
	Courtyard walls and outbuilding to rear of Rectory	23110		Listed as a good early 19th century rectory retaining fine Georgian character and original detail, along with associated early 19th century courtyard walls, outbuildings, walls, railings and privy block, located c.4.7km to the east of Maen Hir North.	
	Garden wall, railings and gates at Rectory	23111			
	Privy block at Rectory	23112			
	Llanfoi	4998, 23104 and 23105		Listed as a row of small rural 18th century cottages which retain their vernacular character and forms a group with the adjacent cottages in the row, located c.4.3km to the north-east of Maen Hir North.	
	Church of St Eilian	4996	Grade I Listed		
	Tan y Fynwent	4997	Grade II Listed	Listed as an exceptionally fine, well preserved late medieval parish church, incorporating a highly unusual 12th century tower with pyramidal spire, and a rare survival of an originally detached chapel. Along with an 18th century cottage, 18th/19th century lychgates and a 15th century cross, located c.4.5km to the north-east of Maen Hir North.	
	Lychgate at west entrance to Church of St Eilian	23107			
	Lychgate to south entrance to Church of St Eilian	23108			
	Cross in churchyard of Church of St Eilian	23109			
D85	Ysgol Syr Thomas Jones	24380	Grade II* Listed	Listed Grade II* as the first purpose-designed comprehensive school in 1936 in Wales and one of the earliest (probably even the first) in Britain, located c.1.6km to the east of Maen Hir North.	Ysgol Syr Thomas Jones comprehensive school is set back within private grounds, from the south-west side of Tanybryn Road and to the north of Pentrefelin. The school is set within a large plot that is bordered to the north, east and south by 20th century residential development and to the west by open grassland. This is a public building that can be viewed in its entirety from the nearby roads and from within the school's grounds. The existing school and its grounds form the asset's important setting. There is no intervisibility between this asset and the Site, nor are there any historic associations. Therefore, there will be no harm to this historic asset from the Project. Asset scoped out of further Stage 2 and 3 assessments.

Asset Ref	Name	Cadw Ref.	Grade	Description	Settings Assessment
D86	Melin Adda	5048	Grade II Listed	Listed as a complete late 18th century windmill tower, one of only 18 out of over 40 such towers which were working on Anglesey in the mid-19th century, located c.1.4km to the east of Maen Hir North.	Melin Adda is a former windmill that does not have its sails and was converted into a residential dwelling. It is now set within a small square garden plot with a residential extension on its southern side. Further modern dwellings are to its south along a short section of lane. the Amlwch Leisure Centre and Ysgol Syr Thomas Jones are located to the west and south-west of the asset. All traces of the former agricultural setting and associated buildings are not present. The small square plot forms the asset's important setting. There is no intervisibility between this asset and the Site, nor are there any historic associations. Therefore, there will be no harm to this historic asset from the Project. Asset scoped out of further Stage 2 and 3 assessments.
D87	Ty-newydd	23016	Grade II Listed	Listed as well-preserved 19th century croft cottage, retaining much of its original character as a small vernacular building, located c.1.8km to the north-east of Maen Hir North.	Ty-newydd is set within a triangular plot that is bordered to the west by the B5025 and north by a country lane. The plot itself is all overgrown with small trees and bushes, and the asset itself is in a derelict state. Its principal elevation faces west toward the junction of the two roads and modern development is located to the west of the asset as well. The small triangular plot forms the assets important setting as a roadside dwelling and can be best experienced from the roads. There is no intervisibility between this asset and the Site, nor are there any historic associations. Therefore, there will be no harm to this historic asset from the Project. Asset scoped out of further Stage 2 and 3 assessments.
D88	Madyn Dysw	5041	Grade II Listed	Listed (notwithstanding modern alterations to detail) as a house with early 17th century origins, and architectural character reflecting rebuilding or extension in the early 19th century, located c.2.2km to the north-east of Maen Hir North.	Madyn Dysw is a residential dwelling located within a sub-rectangular plot formed of gardens and a driveway. The principal elevation of the asset faces north over Madyn Dysw that is wholly unobscured by vegetation. The asset is also encroached upon by modern residential development to the north, west and south. The garden plot forms the asset's important setting as a dwelling. There is no intervisibility between this asset and the Site, nor are there any historic associations. Therefore, there will be no harm to this historic asset from the Project. Asset scoped out of further Stage 2 and 3 assessments.
D89	Amlwch Conservation Area		Conservation Area	Amlwch Conservation Area located c.1.6km to the north-east of Maen Hir North, lies within a broad shallow valley which leads to a rugged coastline that offers some of the finest maritime scenery. The	These assets form the historic urban landscape of Amlwch dating from the early 19th century onwards. The Listed Buildings are all set within their own plots, which are either fronting onto or set back from the roads within Amlwch. All the assets are also set on the downward facing slope, which slopes down to the north-east toward
	Church of Our Lady Star of the Sea, St Winifred	23014	Grade II* Listed		

Asset Ref	Name	Cadw Ref.	Grade	Description	Settings Assessment
	Church of St Eleth	5049	Grade II Listed	town has well planned, and relatively wide streets typified by early 19th century and Victorian architecture. The buildings hierarchy range from the modestly built flat-fronted working-class terraces to large detached Georgian town houses and substantial public and service buildings. The architectural style of residential buildings is predominantly of modest two storey painted rendered working class terraces.	the coastline and harbour. Around these Listed Buildings and the Conservation Area, the modern development of Amlwch grew, which has completely enveloped the core of the town. This historic core, however, has been preserved and forms the asset's crucial and important setting as the historic core of Amlwch. There is no intervisibility between these assets and the Site, nor are there any historic associations. Therefore, there will be no harm to these historic assets from the Project. Assets scoped out of further Stage 2 and 3 assessments.
	English Methodist Chapel with attached schoolroom	5051			
	Dinorben Arms Hotel	5050			
	Lychgate at Church of St Eleth	23012			
	Bryntirion	5042			
	Old National School	5344			
	Mona Lodge, and Former Stables at Mona Lodge	5043, 5044, 5045, 5046 and 23018			
D90	Amlwch Port Consercation Area		Conservation Area	Amlwch Port Conservation Area located c.2.5km to the north-east of Maen Hir North. Amlwch Port is an enclosed natural harbour with views out to sea, with the Port extending inland along a natural creek, surrounded by natural rock outcrops, facing north towards the sea. The architectural style is that of a sturdy industrial landscape of stone and slate pitch roofs buildings and modest two-storey rendered working class terraces	These assets form part of the 19th century historic landscape of Amlwch Port which comprises industrial, residential and religious assets. These assets are preserved around the harbour, within their individual plots. The Port itself had continually developed throughout the 20th century as modern residential development had grown around these assets. These assets are all also set within the low-lying harbour as well, flanked by tall steep cliffs on either side. This harbourside setting forms these assets' crucial and important setting. There is no intervisibility between these assets and the Site, nor are there any historic associations. Therefore, there will be no harm to these historic assets from the Project. Assets scoped out of further Stage 2 and 3 assessments.
	Egleys Bresbyteraidd Cymru	17731	Grade II Listed		
	Carmel Independent Chapel and schoolroom	23013			
	Harbour Walls of old harbour	5309			
	Copper Hoppers	5316			
	Mona Windmill	5310			
	Pier at the entrance of the old harbour	5311			
	Lighthouse and watchtower, with attached building at the entrance of the old harbour	5312			
	Dry Dock	5313			
	Sail Loft	5314			
Chimney nearest to the Sail Loft	5315				

Asset Ref	Name	Cadw Ref.	Grade	Description	Settings Assessment
91	Werthyr Standing Stone	3991	Scheduled Monument	<p>The monument comprises a massive standing stone, probably dating to the Bronze Age (c.2300 BC - 800 BC), located c.690m to the north of Maen Hir North.</p>	<p>Werthyr Standing Stone is set within a rural pastoral landscape upon a slight rise with the landscape which affords it a prominent position. The standing stone is set back from a nearby country road and modern dwellings to the east, and a hedgerow passes the asset to the north. This rural open landscape forms the asset's important setting as a prehistoric monument. There are limited views between this asset and the Site, however these are negligible due to the undulating landscape and the distance from the Site, nor are there any historic associations. The nearby wind turbines provide more of an imposing backdrop to the asset. Therefore, there will be no harm to this historic asset from the Project. Asset scoped out of further Stage 2 and 3 assessments.</p>

#### **Andover Office**

Stanley House  
Walworth Road  
Andover  
Hampshire  
SP10 5LH

t: 01264 347630

#### **Cirencester Office**

Building 11  
Cotswold Business Park  
Cirencester  
Gloucestershire  
GL7 6BQ

t: 01285 771022

#### **Milton Keynes Office**

Unit 8 - The IO Centre  
Fingle Drive, Stonebridge  
Milton Keynes  
Buckinghamshire  
MK13 0AT

t: 01908 564660

#### **Suffolk Office**

Unit 5, Plot 11, Maitland Road  
Lion Barn Industrial Estate  
Needham Market  
Suffolk  
IP6 8NZ

t: 01449 900120

e: [enquiries@cotswoldarchaeology.co.uk](mailto:enquiries@cotswoldarchaeology.co.uk)

