

# Prosiect Maen Hir

Solar a Storio Ynni



## Preliminary Environmental Information Report Volume III

Appendix 15-4: Construction Road Traffic Emissions Receptor Locations

Prosiect Maen Hir - September

EN010156





**Appendix 15-4 Receptor Locations**

Existing receptor locations were identified within close proximity of each of the four potential construction routes detailed in Section 1 – Air Quality of Chapter 15. Concentrations of NO<sub>2</sub>, PM<sub>10</sub> and PM<sub>2.5</sub> were predicted at the identified existing receptor locations for Scenario 3: 2024 Base Year to consider existing pollutant concentrations. Receptor heights were modelled at 1.5m for residential properties to represent average breathing height at ground floor and 3m for first floor. For primary schools, receptors were modelled at a height of 0.8m to represent the lower breathing height of children. Tables 15-4.1 to 15-4.4 detail the receptor locations considered along each construction route. Figure 15-4.1 to Figure 15-4.4 illustrate the receptor locations along each construction route.

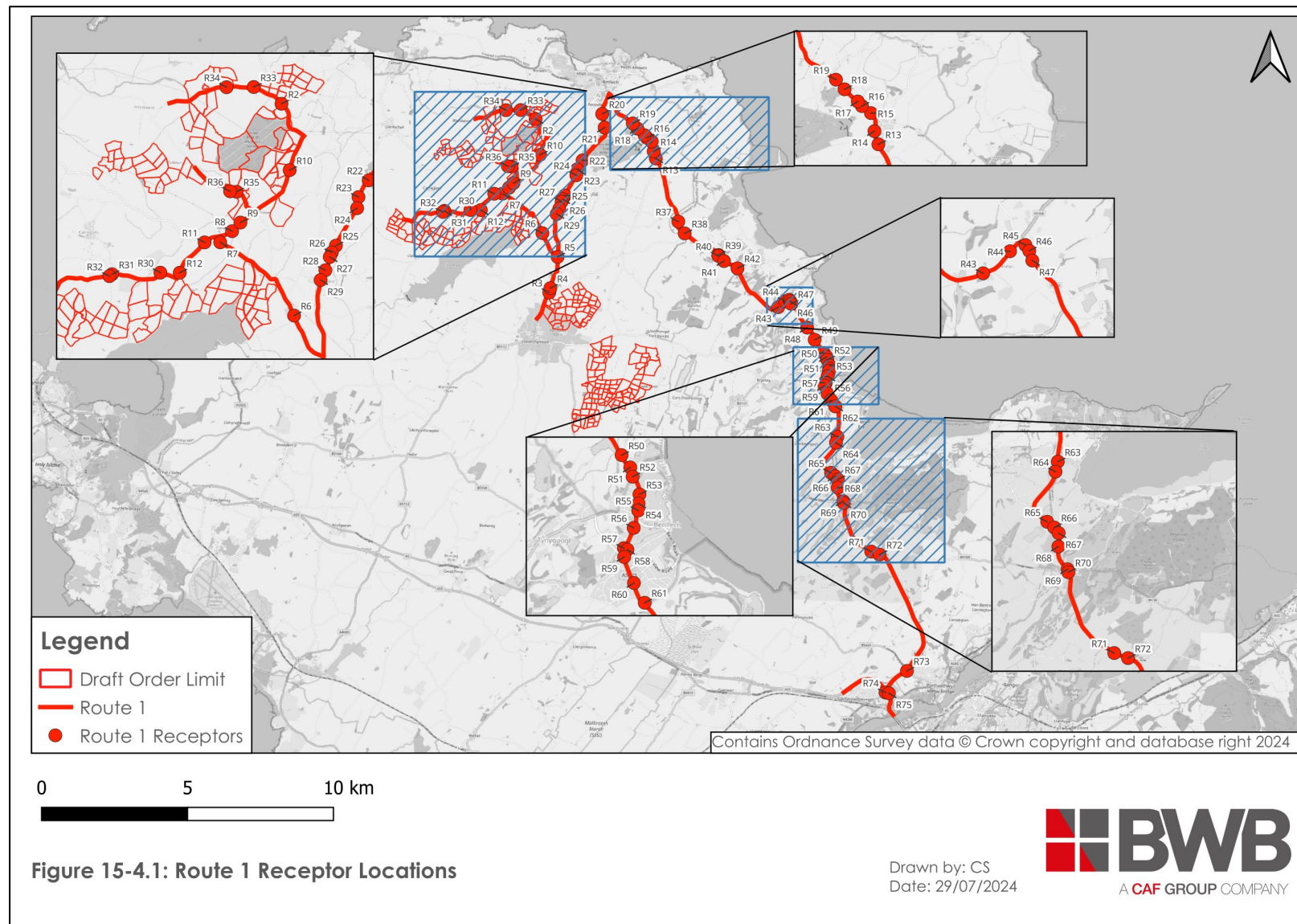
**Table 15-4.1: Route 1 Receptor Locations**

Receptor	Grid Reference		Details	Height Modelled
	X	Y		(m)
R1	241624	391702	Residential	1.5
R2	241814	391547	Residential	1.5
R3	242281	385606	Residential	1.5
R4	242318	385755	Residential	1.5
R5	242567	386826	Residential	1.5
R6	242045	387640	Residential	1.5
R7	240684	388992	Residential	1.5
R8	240903	389197	Residential	1.5
R9	241056	389356	Residential	1.5
R10	241964	390323	Residential	1.5
R11	240395	388990	Residential	1.5
R12	239937	388430	Residential	1.5
R13	245931	390198	Residential	1.5
R14	245858	390442	Residential	1.5
R15	245792	390778	Residential	1.5
R16	245624	390908	Residential	1.5
R17	245548	390994	Residential	1.5

R18	245303	391220	Residential	1.5
R19	245143	391399	Residential	1.5
R20	244094	391724	Residential	1.5
R21	244177	391256	Residential	1.5
R22	243423	390135	Residential	1.5
R23	243234	389825	Residential	1.5
R24	243209	389621	Residential	1.5
R25	242817	388930	Residential	1.5
R26	242743	388803	Residential	1.5
R27	242705	388721	Residential	1.5
R28	242624	388477	Residential	1.5
R29	242536	388296	Residential	1.5
R30	239580	388432	Residential	1.5
R31	238687	388403	Residential	1.5
R32	238639	388367	Residential	1.5
R33	241301	391856	Residential	1.5
R34	240800	391852	Residential	1.5
R35	240987	389923	Residential	1.5
R36	240866	389933	Residential	1.5
R37	246701	388035	Residential	1.5
R38	246920	387631	Residential	1.5
R39	248080	386890	Residential	1.5
R40	248074	386861	Residential	1.5
R41	248267	386684	Residential	1.5
R42	248730	386432	Residential	1.5
R43	250124	385104	Residential	1.5
R44	250366	385303	Residential	1.5
R45	250504	385359	Residential	1.5
R46	250539	385306	Residential	1.5

R47	250566	385219	Residential	1.5
R48	251118	384404	Residential	1.5
R49	251374	383987	Residential	1.5
R50	251686	383535	Residential	1.5
R51	251781	383401	Residential	1.5
R52	251806	383299	Residential	1.5
R53	251882	383106	Residential	1.5
R54	251872	383004	Residential	1.5
R55	251868	382928	Residential	1.5
R56	251818	382738	Residential	1.5
R57	251711	382516	Residential - Care Home	1.5
R58	251750	382499	Doctor's Office	1.5
R59	251714	382419	Residential	1.5
R60	251821	382134	Residential	1.5
R61	251939	381917	Residential	1.5
R62	252085	381703	Residential	1.5
R63	252153	380666	Residential	1.5
R64	252105	380460	Residential	1.5
R65	251935	379429	Residential	1.5
R66	252078	379312	Residential	1.5
R67	252170	379196	Residential	1.5
R68	252164	378920	Residential	1.5
R69	252354	378453	Residential	1.5
R70	252371	378393	Residential	1.5
R71	253312	376732	Residential	1.5
R72	253596	376628	Residential	1.5
R73	254534	372642	Residential	1.5
R74	253802	371903	Residential	1.5
R75	253917	371877	Residential	1.5

Figure 15-4.1: Route 1 Receptor Locations



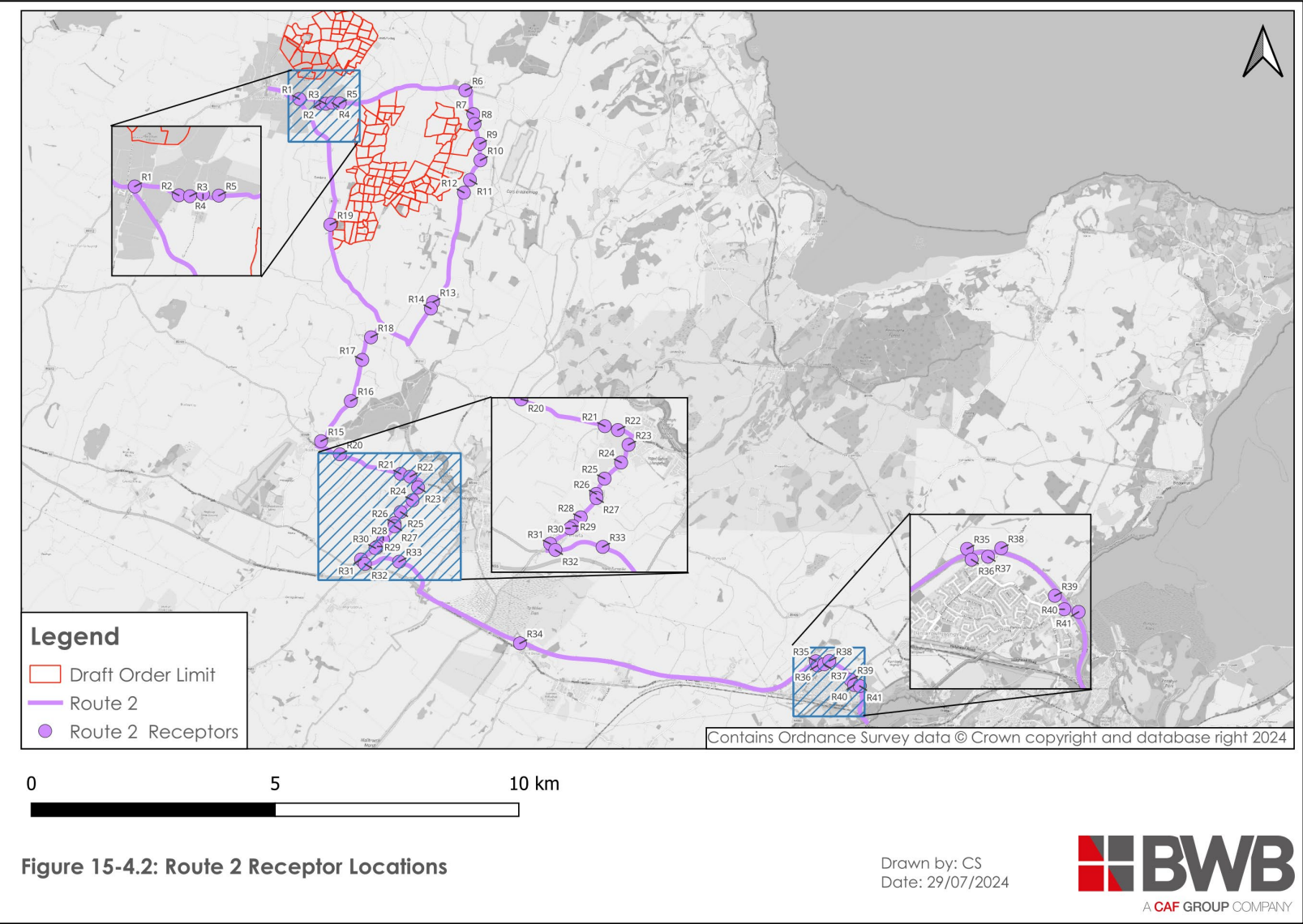
**Table 15-4.2: Route 2 Receptor Locations**

Receptor	Grid Reference		Details	Height Modelled
	X	Y		(m)
R1	242429	383915	Residential	1.5
R2	242861	383827	Residential	1.5
R3	242971	383819	Residential	1.5
R4	243099	383839	Residential	1.5
R5	243254	383825	Residential	1.5
R6	245833	384094	Residential	1.5
R7	245998	383606	Residential	1.5
R8	246022	383404	Residential	1.5
R9	246129	382997	Residential	1.5
R10	246142	382659	Residential	1.5
R11	245926	382256	Residential	1.5
R12	245803	381995	Residential	1.5
R13	245169	379750	Residential	1.5
R14	245125	379616	Residential	1.5
R15	242872	376895	Residential	1.5
R16	243482	377720	Residential	1.5
R17	243718	378563	Residential	1.5
R18	243897	379027	Residential	1.5
R19	243062	381338	Residential	1.5
R20	243259	376625	Residential	1.5
R21	244507	376225	Residential	1.5
R22	244702	376167	Secondary School	0.8
R23	244862	375947	Residential	1.5
R24	244751	375682	Residential	1.5
R25	244503	375442	Residential	1.5
R26	244379	375213	Residential	1.5

R27	244383	375151	Residential	1.5
R28	244148	374863	Residential	1.5
R29	244032	374733	Residential	1.5
R30	243988	374700	Residential	1.5
R31	243691	374469	Residential	1.5
R32	243770	374377	Residential	1.5
R33	244474	374422	Residential	1.5
R34	246953	372746	Residential	1.5
R35	253022	372380	Residential	1.5
R36	253058	372294	Residential	1.5
R37	253192	372316	Residential	1.5
R38	253298	372385	Residential	1.5
R39	253731	372001	Residential	1.5
R40	253807	371892	Residential	1.5
R41	253923	371871	Residential	1.5



Figure 15-4.2: Route 2 Receptor Locations



**Table 15-4.3: AIL Northern Route Receptor Locations**

Receptor	Grid Reference		Details	Height Modelled
	X	Y		(m)
R1	224823	382738	Residential	1.5
R2	224681	382430	Residential	1.5
R3	224699	382167	Residential	3
R4	224978	381627	Residential	1.5
R5	225189	381477	Residential	1.5
R6	225147	381393	Education - Primary School	0.8
R7	225262	381401	Education - Primary School	0.8
R8	225713	381591	Residential	1.5
R9	226647	381515	Residential	1.5
R10	228519	379803	Residential	1.5
R11	228691	379689	Residential	1.5
R12	229149	379465	Residential	1.5
R13	229336	379329	Residential	1.5
R14	229529	379331	Residential	1.5
R15	230322	379943	Residential	1.5
R16	231300	380756	Residential	1.5
R17	231524	380957	Residential	1.5
R18	231667	381054	Residential	1.5
R19	231741	381331	Residential	1.5
R20	231645	382195	Residential	1.5
R21	231585	382271	Residential	1.5
R22	231451	382530	Residential	1.5
R23	231353	382982	Residential	1.5
R24	231362	383191	Residential	1.5
R25	231638	383546	Residential	1.5
R26	231748	383852	Residential	1.5

R27	231575	384531	Residential	1.5
R28	232010	385610	Residential	1.5
R29	231917	386221	Residential	1.5
R30	231411	386962	Residential	1.5
R31	231506	386942	Residential	1.5
R32	231437	387024	Education - Primary School	0.8
R33	231733	387407	Residential	1.5
R34	231974	387802	Residential	1.5
R35	232403	388089	Residential	1.5
R36	232683	388426	Residential	1.5
R37	232899	388758	Residential	1.5
R38	232926	388744	Residential	1.5
R39	233026	388927	Residential	1.5
R40	234017	389886	Residential	1.5
R41	234208	390297	Residential	1.5
R42	234253	390559	Residential	1.5
R43	234208	391282	Residential	1.5
R44	235126	391717	Residential	1.5
R45	235527	392530	Residential	1.5
R46	235581	392530	Residential	1.5
R47	235626	392688	Residential	1.5
R48	235901	392997	Residential	1.5
R49	236175	393044	Residential	1.5
R50	236282	393039	Residential	1.5
R51	236482	393068	Residential	1.5
R52	236764	393094	Residential	1.5
R53	237248	393157	Residential	1.5
R54	239344	393644	Residential	1.5
R55	240575	393567	Residential	1.5

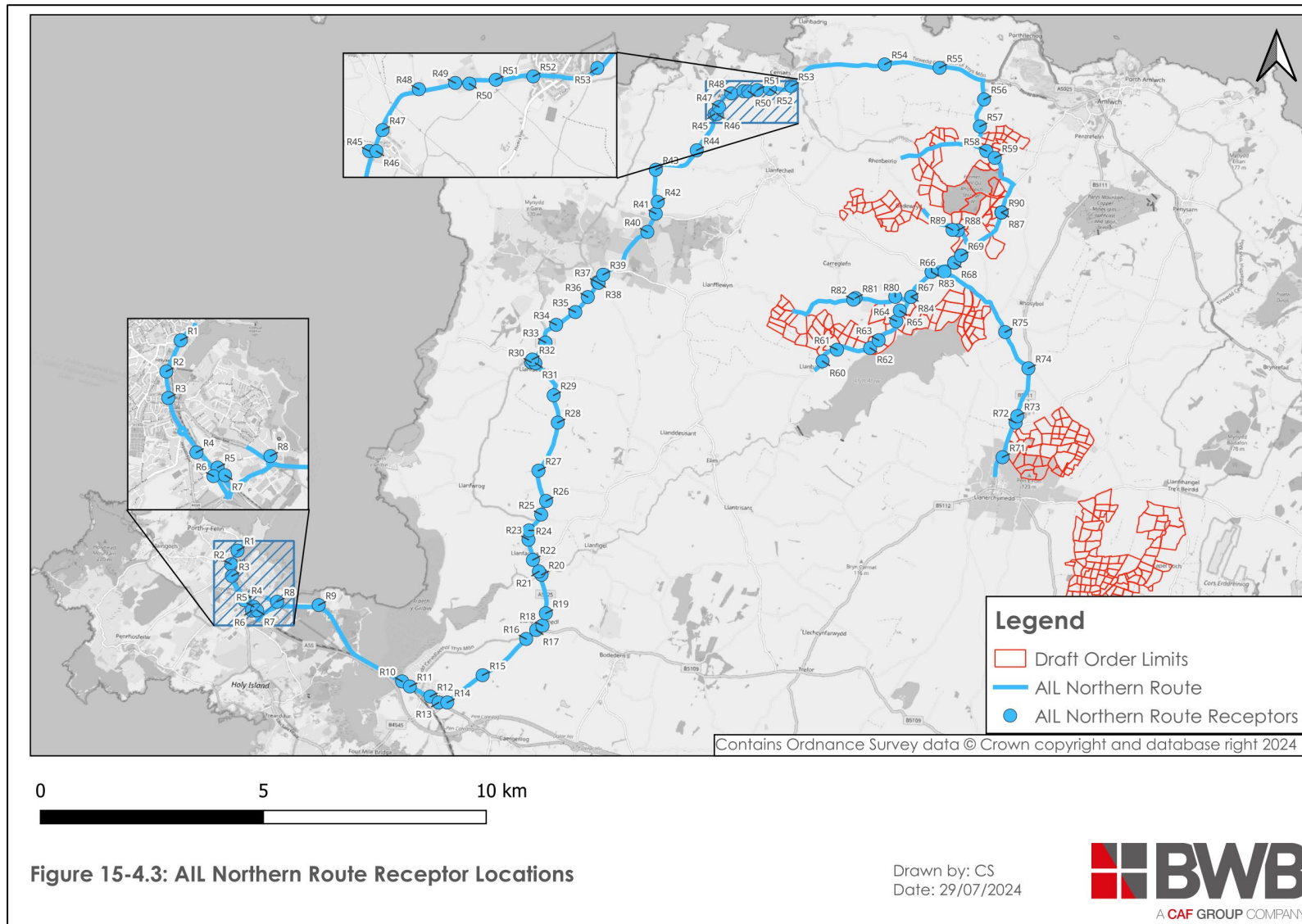
## Prosiect Maen Hir

R56	241571	392859	Residential	1.5
R57	241479	392253	Residential	1.5
R58	241624	391702	Residential	1.5
R59	241814	391547	Residential	1.5
R60	237949	386987	Residential	1.5
R61	238273	387244	Residential	1.5
R62	239016	387284	Residential	1.5
R63	239207	387456	Residential	1.5
R64	239605	387885	Residential	1.5
R65	239683	388122	Residential	1.5
R66	240395	388990	Residential	1.5
R67	239937	388430	Residential	1.5
R68	240903	389197	Residential	1.5
R69	241056	389356	Residential	1.5
R70	241964	390323	Residential	1.5
R71	241986	384832	Residential	1.5
R72	242281	385606	Residential	1.5
R73	242318	385755	Residential	1.5
R74	242567	386826	Residential	1.5
R75	242045	387640	Residential	1.5
R76	240684	388992	Residential	1.5
R77	240903	389197	Residential	1.5
R78	241056	389356	Residential	1.5
R79	241964	390323	Residential	1.5
R80	239580	388432	Residential	1.5
R81	238687	388403	Residential	1.5
R82	238639	388367	Residential	1.5
R83	240395	388990	Residential	1.5
R84	239937	388430	Residential	1.5

## Prosiect Maen Hir

R85	240903	389197	Residential	1.5
R86	241056	389356	Residential	1.5
R87	241964	390323	Residential	1.5
R88	240987	389923	Residential	1.5
R89	240866	389933	Residential	1.5
R90	241964	390323	Residential	1.5

Figure 15-4.3: AIL Northern Route Receptor Locations



**Table 15-4.4: AIL Southern Route Receptor Locations**

Receptor	Grid Reference		Details	Height Modelled
	X	Y		(m)
R1	224823	382738	Residential	1.5
R2	224681	382430	Residential	1.5
R3	224699	382167	Residential	3.0
R4	224978	381627	Residential	1.5
R5	225189	381477	Residential	1.5
R6	225147	381393	Education - Primary School	0.8
R7	225262	381401	Education - Primary School	0.8
R8	228343	379595	Residential	1.5
R9	228608	378980	Residential	1.5
R10	228760	378972	Residential	1.5
R11	231957	378530	Residential	1.5
R12	233234	378201	Residential	1.5
R13	233898	377714	Residential	1.5
R14	236724	377156	Residential	1.5
R15	237296	378320	Residential	1.5
R16	237363	379907	Residential	1.5
R17	238477	380002	Residential	1.5
R18	238711	380116	Residential	1.5
R19	238935	380036	Residential	1.5
R20	239126	379674	Residential	1.5
R21	239707	379135	Residential	1.5
R22	239815	379025	Residential	1.5
R23	240412	378731	Residential	1.5
R24	240579	378633	Residential	1.5
R25	241164	378308	Residential	1.5
R26	241451	378095	Residential	1.5

## Prosiect Maen Hir

R27	242519	377071	Residential	1.5
R28	242681	376873	Residential	1.5
R29	242795	376800	Residential	1.5
R30	242872	376895	Residential	1.5
R31	243482	377720	Residential	1.5
R32	243718	378563	Residential	1.5
R33	243897	379027	Residential	1.5
R34	243062	381338	Residential	1.5



Figure 15-4.4: Route 4 Receptor Locations

