

This drawing may contain Ordnance Survey material by permission of Ordnance Survey on behalf of the Controller of Her Majesty's Stationery Office © Crown Copyright 2022. All rights reserved. Reference number 0100031673

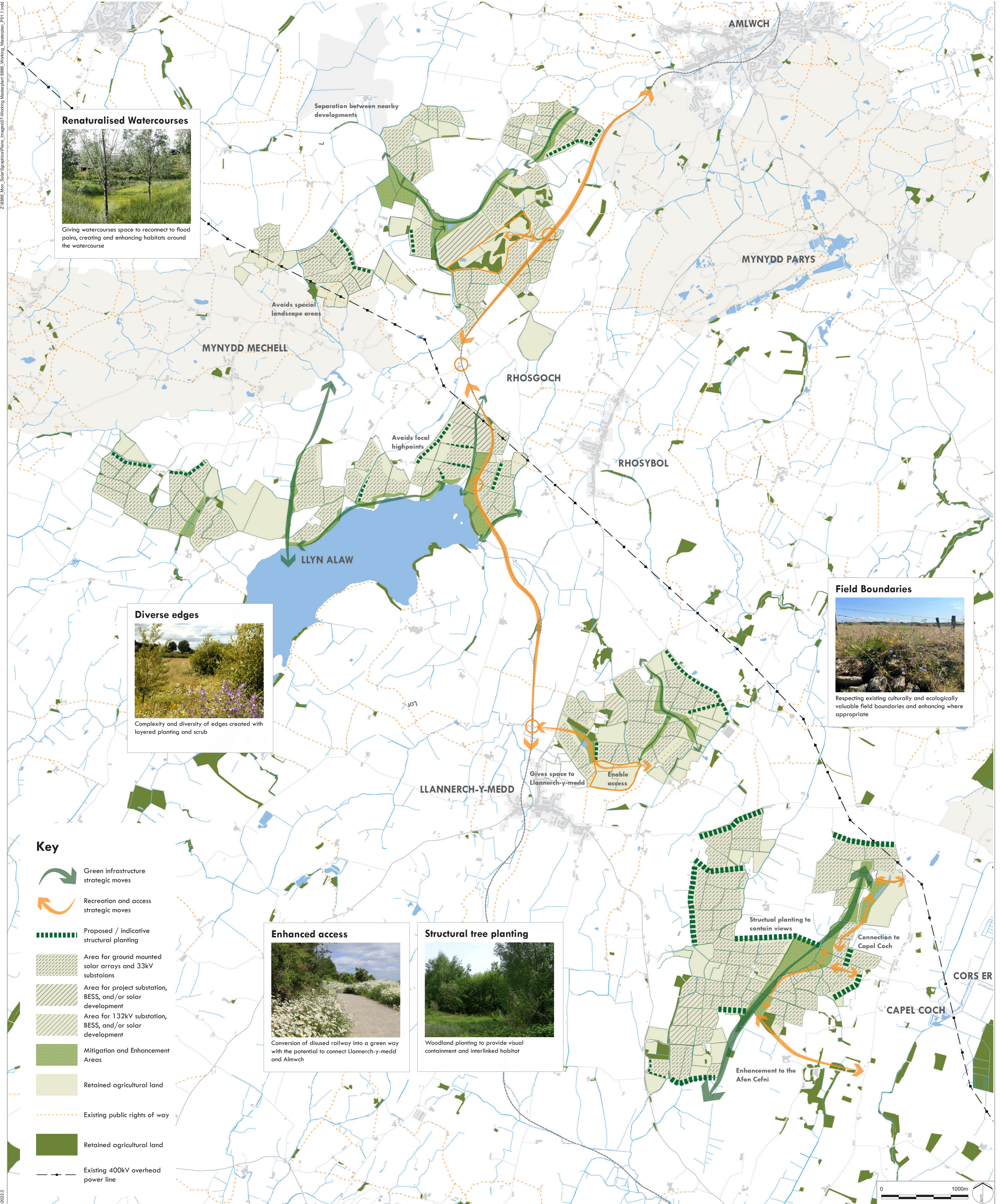
OS Open data / © Natural England / © DEFRA / © DECC / © Historic England / © Environment Agency. Contains Ordnance Survey data © Crown copyright and database right 2022 / Aerial Photography - World Imagery - Source: Esri, DigitalGlobe, GeoEye, Earthstar Geographics, CNES/Airbus DS, USDA, USGS, AeroGRID, IGN, and the GIS User Community

No dimensions are to be scaled from this drawing.
All dimensions are to be checked on site.
Area measurements for indicative purposes only.

© LDA Design Consulting Ltd. Quality Assured to BS EN ISO 9001 : 2015
Sources: Ordnance Survey

PO3	Updated following legal review	02/09/2024
PO2	Land for solar revised following client review	29/08/2024
PO1	Land for solar revised following review	21/08/2024
REV.	DESCRIPTION	APP. DATE

ISSUED BY Bristol T: 0117 2033 628
DATE Aug 2024 DRAWN LT
SCALE@A1 1:20,000 CHECKED KH
STATUS Draft APPROVED KH



Z:\8888_Mat_Solar\Graphics\Plans_Images\07-Working Masterplan_8888_Working Masterplan_P01_1.indd

14/08/2024

LEGEND